

Catálogo de mariposas  
**Municipio de Mitú**  
Mitú, Vaupés



Kim Garwood & Juan Guillermo Jaramillo V.

BB

# Convenciones



La taxonomía y la secuencia de este catálogo está basado en el Atlas of Neotropical lepidoptera, listado de chequeo parte 4A por Gerardo Lamas, 2004 y en [www.butterfliesofamerica.com](http://www.butterfliesofamerica.com)

La mayoría de fotos fueron tomadas a mariposas vivas en su ambiente natural. Las fotos de especímenes son usadas para mostrar algunas características que no son posibles fotografiar en la naturaleza o para mostrar especies de las cuales aún no tenemos ejemplares vivos, en ese caso ponemos una foto de esta especie tomada en otro país neotropical, indicando en la foto el país donde fue registrada con una abreviación de dos letras. Esta abreviación corresponde al código internacional usado como terminación en internet del código de cada país, ej. Brasil BR, Ecuador EC, Perú PE etc. Las especies fotografiadas en Colombia no tienen el código de país.

Debajo de la foto están el nombre científico y el rango de distribución de la especie con abreviación del nombre de los países de norte a sur, en algunos casos de con especies que están en Estados Unidos y México usamos el código de los estados más al sur donde están las especies TX Texas, CHI Chiapas.

Las fotos serán reemplazadas una vez se tome la foto de estas especies en Colombia, toda colaboración que permita completar el catalogo será bienvenida y el fotógrafo tendrá los créditos.

Nombres científicos con sp y el nombre de una localidad, tienen identificación desconocida, con duda o son especies sin describir por la ciencia, por favor si Usted puede ayudar a completar o corregir escribanos a los contactos.

## Advertencia

Este catálogo hace parte del Catálogo de mariposas de Colombia, es una versión preliminar en proceso de construcción y revisión, generado desde una base de datos, puede tener errores de taxonomía, de autores, de fotógrafos, de ortografía, de distribución geográfica y de códigos o duplicados que deben ser corregidos.

Al ser en un medio electrónico las correcciones son fáciles de hacer, no implican desperdicio de papel y se puede actualizar permanentemente.

Son bienvenidas todas las críticas, sugerencias y correcciones para mejorarlo y corregirlo.

Si desea colaborar tenemos una metodología para hacerlo por favor llame a Juan Guillermo Jaramillo V. al celular 57-3108306732 o escriba al correo [arcas1956@gmail.com](mailto:arcas1956@gmail.com) o a Kim Garwood [kimgrwd@sbcglobal.net](mailto:kimgrwd@sbcglobal.net) o [www.neotropicalbutterflies.com](http://www.neotropicalbutterflies.com)

Todos los errores son responsabilidad de Juan Guillermo Jaramillo V. y Kim Garwood.

# Conventions



Taxonomy and sequence of this catalog is based on the Atlas of Neotropical Lepidoptera, check list of Part 4A by Gerardo Lamas, 2004 and [www.butterfliesofamerica.com](http://www.butterfliesofamerica.com)

Most photos were taken of live butterflies in their natural environment. The photos of specimens are used to display some features that are not possible to photograph in nature. In some cases we have used photos taken in another neotropical country, and in these photos the other country is shown by a two letter abbreviation. This abbreviation corresponds to the international code used as internet country code, eg BR Brazil. The species photographed in Colombia do not have the country code.

Photos will be replaced once the picture is taken of these species in Colombia, any collaboration or contribution of photos that adds to the catalog will be welcome and all photographers will be credited.

Scientific names with the letters sp and the name of a town are used for unknown or unsure id's. If you can help with id's or corrections, please contact the authors.

## Warning

This catalog is part of the checklist of Colombian butterflies, it is a work in progress and is not complete. It is a preliminary version under construction and review, generated from a database. It may contains errors in taxonomy, author, photographers, spelling, geographical distribution and codes or duplicates that must be corrected.

Being an electronic medium, corrections are easy to make. There is nothing printed, and information and id's can be easily updated.

We welcome all criticisms, suggestions, and corrections to improve and correct this work.

If you want to help with this work, please contact Juan Guillermo Jaramillo at cellular 57-3108306732, email [arcas1956@gmail.com](mailto:arcas1956@gmail.com), or Kim Garwood, email [kimgpwd@sbcglobal.net](mailto:kimgpwd@sbcglobal.net) or [www.neotropicalbutterflies.com](http://www.neotropicalbutterflies.com), to learn about our methodology.

All errors are the responsibility of Juan Guillermo Jaramillo V. and Kim Garwood.

## Familias y subfamilias de mariposas

Las mariposas se clasifican en seis familias que agrupan especies con características comunes.

### Hesperiidae

Esta familia de mariposas primitivas tiene como característica las antenas con ganchito en la parte final. Tienen cabeza y cuerpo grueso y muchas tienen colores oscuros o cafés. 4 subfamilias.



**Eudaminae**  
Spreadwing skippers



**Pyrginae**  
Spreadwing skippers



**Pyrginae**  
Firetips



**Heteropterinae**  
Skipperlings



**Hesperiinae**  
Grass Skippers

## Butterfly families and subfamilies

The butterflies are classified into six families comprising species with common characteristics.

### Skippers

Mostly small with stout bodies, fast fliers, skipping or zipping flight. Many are brown or dark, drab colors. A large family, about 30% of all butterflies. Eudaminae and Pyrginae sit with wings spread open, Heteropterinae often sit with wings closed, Hesperiinae often sit in jet plane position. 4 subfamilies.

### Papilionidae

Mariposas grandes, muchas con colas. Vuelan con fortaleza y les gusta posarse en pantanos o zonas húmedas moviendo constantemente las alas. La mayoría son negras con rayas amarillas o negras con parches rojos en las alas posteriores. Las antenas tienen la parte final engrosada y curvada.



**Papilioninae**



**Swallowtails**



### Swallowtails

Mostly large butterflies, many with tails. Strong fliers, they like to mudpuddle on wet dirt with constantly moving, quivering wings. They are mostly black with yellow stripes or black with red patches on the hindwings (Parides). The antenna is bulky and curved at the end.

### Pieridae

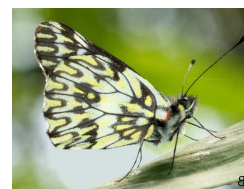
La mayoría de pierides son amarillas, blancas o naranja, aunque hay algunas negras. Las pierides visitan flores y son comunes en jardines, pero las dismorphias prefieren los bosques sombreados. Tienen 3 subfamilias.



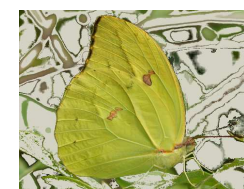
**Dismorphiinae**  
Mimic-Whites



**Pierinae**



**Whites**



**Coliadinae**



**Sulphurs**

### Whites and sulphurs

Mostly white, yellow or orange, but some are black. Whites and Sulphurs like flowers and are often in gardens, but Dismorphiinae like the shaded forest. They have 3 subfamilies.

## Riodinidae

La mayoría de riodínidos se encuentran en tierras bajas, es una familia con mucha variedad. Muchas tienen manchas metálicas y se posan por debajo de las hojas. Algunas tienen colas. Tienen dos subfamilias.

## Metalmarks

More species are found in the lowlands. This is the most varied family; they can come in many shapes, sizes and colors. Some have tails, many do not. Some genera sit with wings closed, some with wings open. They pose under the leaves. They have 2 subfamilies.



Euselasiinae Metalmarks



Riodininae



Metalmarks



## Lycaenidae

En general los licénidos son mariposas pequeñas, muchas tienen colas pequeñas para distraer a los predadores. Son difíciles de ver pues muchas viven en el docel. A menudo son azules al abrir las alas. Tienen 2 subfamilias.

## Hairstreaks and blues

Hairstreaks often have tails, but not always. This is the least common of the 6 families, often in the canopy and hard to see. Small butterflies, often brilliant blue above. They have 2 subfamilies.



Polyommata Blues



Theclinae



Hairstreaks

## Nymphalidae

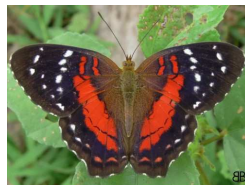
Las nifáidos solo tienen 4 patas visibles, las otras 2 están acortadas y cerca a la cabeza como escobas. Es la familia más abundante y representa 40% del total. Tiene 10 subfamilias.

## Brushfoots

Only show 4 walking legs, the front 2 legs are held up close to the head, like brushes. This is the largest family, about 40%, many subfamilies.



Heliconiinae  
Longwings



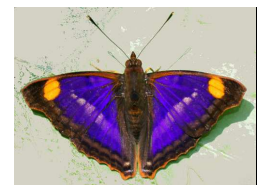
Nymphalinae  
Brushfoots Crescents



Limenitidinae  
Sisters



Charaxinae  
Leafwings



Apaturinae  
Emperors



Satyrinae  
Satyrs, Morphos



Danaina  
Clearwings



Danaina  
Monarchs



Cyrestinae  
Daggerwings



Biblidinae  
Tropicals

## Hesperiidae

### Skippers

#### Eudaminae

#### Spreadwing Skippers

Se posan con las alas abiertas, muchas tienen colas y puntos o rayas en las alas delanteras.

Sit with wings open, many have tails and spots or stripes on the forewing.



*Augiades crinitus*

R-BO, BR



*Augiades crinitus*

R-BO, BR



*Autochton neis*

MX-PG



*Autochton neis*

MX-PG



*Autochton neis*

MX-PG



*Autochton neis*

MX-PG

#### Pyrginae

#### Spreadwing Skippers

Se posan con las alas abiertas, en la tribu Pyrrhopigine muchos tienen punta roja en el abdomen.

Tribe Pyrrhopygini/Golf-club Skippers or Firetips – sit with wings open, some have red tips to abdomen. Tip of antennae bent over at 90 degree angle, like a golf club. Powerful fliers, strong bodies and wings, can buzz you. Some very colorful. Other spr



*Celaenorrhinus eligius eligius* CR-AR



*Celaenorrhinus eligius eligius* CR-AR



*Conognathus platon* O-BR-EC



*Conognathus platon* O-BR-EC



*Cyclosemia leppa* GT-BO



*Pachyneuria damon* CO-BR



*Pachyneuria duidae* CO-VZ



*Pachyneuria duidae* CO-VZ



*Pachyneuria duidae* CO-VZ



*Pachyneuria duidae* CO-VZ



*Pachyneuria duidae* CO-VZ



*Pachyneuria duidae* CO-VZ



*Pachyneuria duidae* CO-VZ



*Pachyneuria duidae* CO-VZ



*Sophista aristoteles aristoteles* CO-BR



*Sophista aristoteles aristoteles* CO-BR



*Anastrus neaeris neaeris* MX-EC



*Anastrus neaeris neaeris* MX-EC



*Anastrus neaeris neaeris* MX-EC



*Anastrus neaeris neaeris* MX-EC



*Anastrus neaeris neaeris* MX-EC



*Camptopleura auxo* MX-PG



*Camptopleura auxo* MX-PG



*Camptopleura auxo* MX-PG





*Camptopleura auxo* MX-PG



*Camptopleura auxo* MX-PG



*Chiomara mithrax* AZ-AR



*Chiomara mithrax* AZ-AR



*Chiomara mithrax* AZ-AR



*Gorgythion canda* CO?-PG



*Potamanaxas effusa effusa* O-PE,GU



*Potamanaxas effusa effusa* O-PE,GU



*Milanion clito* CO?-FG



*Milanion clito* CO?-FG



*Pythonides jovianus* GT-BR



*Pythonides jovianus* GT-BR



*Pythonides lerina* O-FG, BR



*Quadrus deyrollei deyrollei* CO-BR



*Quadrus deyrollei deyrollei* CO-BR



*Quadrus deyrollei deyrollei* CO-BR

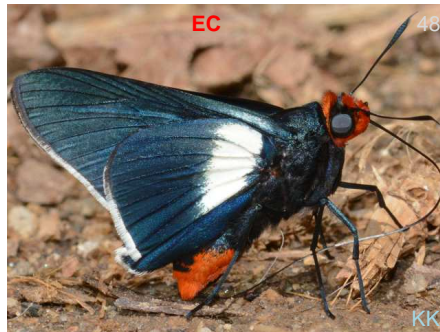
## Hesperiinae

### Grass Skippers

Sit in 'jet plane' position, with forewings straight up and hindwings out flat. Many are orange and black, or brown. Many can only be separated by genitalic dissection. Small butterflies, some like flowers in gardens, some like shaded forest.



*Pyrrhopygopsis socrates socrates* CO-BR



*Pyrrhopygopsis socrates socrates* CO-BR



*Pyrrhopygopsis socrates socrates* CO-BR



*Pyrrhopygopsis socrates socrates* CO-BR



*Pyrrhopygopsis socrates socrates* CO-BR



*Pyrrhopygopsis socrates socrates* CO-BR



*Aides aegita* PN-BR



*Aides aegita* PN-BR



*Aides aegita* PN-BR



*Aides aegita* PN-BR



*Aides aegita* PN-BR



*Damas clavus* MX-BR



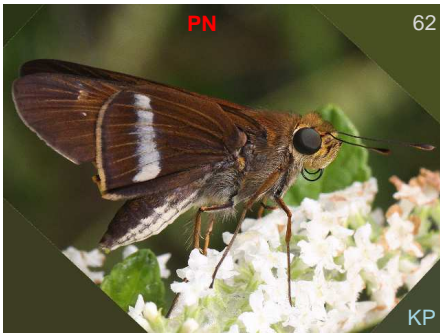
*Panoquina fusina sonta* PN-CO



*Panoquina fusina sonta* PN-CO



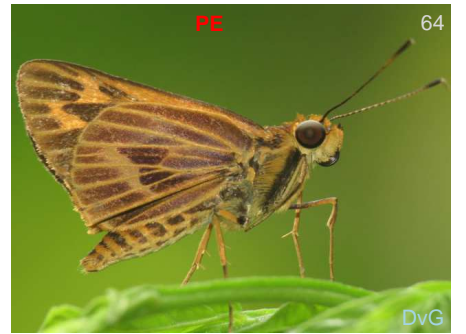
*Panoquina fusina sonta* PN-CO



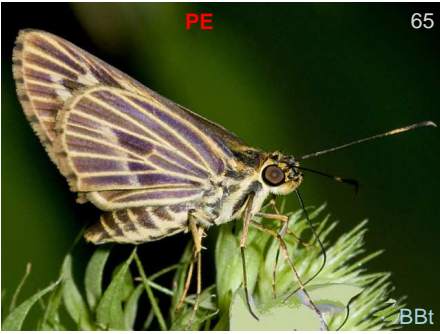
*Panoquina fusina sonta* PN-CO



*Molo visendus* CO-EC



*Molo visendus* CO-EC



*Molo visendus*

CO-EC



*Molo visendus*

CO-EC

# Papilionidae

## Swallowtails

### Papilioninae

#### Swallowtails



*Battus crassus crassus* CO-AR



*Battus crassus crassus* CO-AR



*Battus crassus crassus* CO-AR



*Battus lycidas* X-BO, BR



*Battus lycidas* X-BO, BR



*Battus lycidas* X-BO, BR



*Battus lycidas* X-BO, BR



*Battus lycidas* X-BO, BR



*Battus lycidas* X-BO, BR



*Heraclides androgeus androgeus* VZ-BR



*Heraclides androgeus androgeus* VZ-BR



*Heraclides thoas cinyras* O-PE, BR



*Heraclides thoas cinyras* O-PE,BR



*Heraclides thoas cinyras* O-PE,BR



*Heraclides thoas cinyras* O-PE,BR



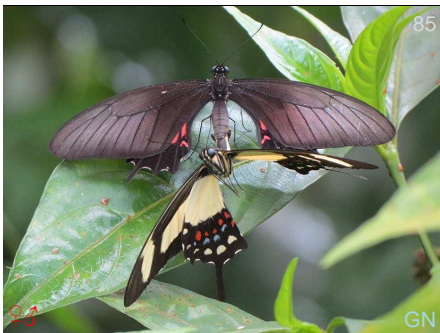
*Heraclides thoas cinyras* O-PE,BR



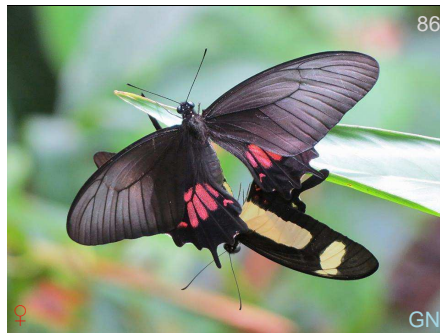
*Heraclides thoas cinyras* O-PE,BR



*Heraclides thoas cinyras* O-PE,BR



*Heraclides torquatus torquatus* O-BR,GU



*Heraclides torquatus torquatus* O-BR,GU



*Mimoides ariarathes gayi* O-PE,BR



*Mimoides ariarathes gayi* O-PE,BR



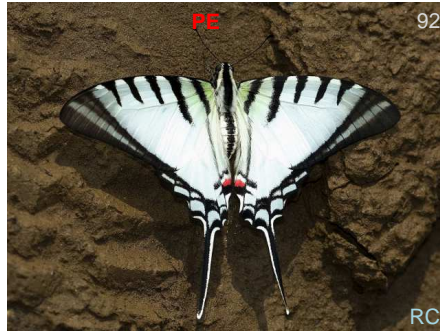
*Mimoides pausanias pausanias* O,BR,GU



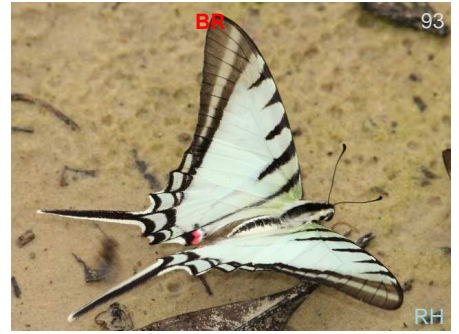
*Mimoides pausanias pausanias* O,BR,GU



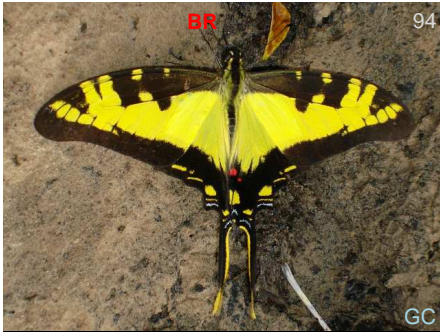
*Mimoides pausanias pausanias* O, BR, GU KG



*Neographium agesilaus autosilaus* Z-BO, BR RC



*Neographium agesilaus autosilaus* Z-BO, BR RH



*Neographium thyastes thyastinus* O-BO, BR GC



*Neographium thyastes thyastinus* O-BO, BR GC



*Parides aeneas bolivar* CO-BR FPR ♂



*Parides aeneas bolivar* CO-BR BBI ♂



*Parides aeneas bolivar* CO-BR BH ♀



*Parides aeneas bolivar* CO-BR BBI



*Parides aeneas bolivar* CO-BR KG ♀



*Parides aeneas bolivar* CO-BR FM



*Parides anchises drucei* O-PE, BR BH



*Parides anchises drucei* O-PE,BR



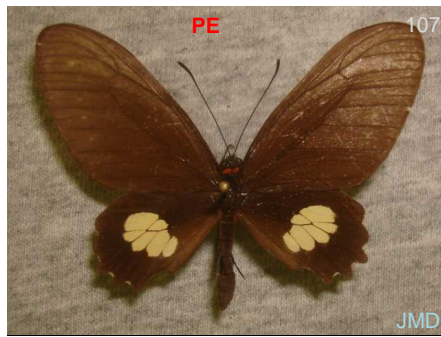
*Parides anchises drucei* O-PE,BR



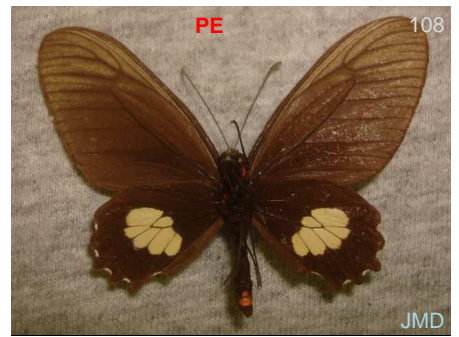
*Parides anchises drucei* O-PE,BR



*Parides chabrias chabrias* CO-BR



*Parides chabrias chabrias* CO-BR



*Parides chabrias chabrias* CO-BR



*Parides lysander brissonius* VZ-S PE



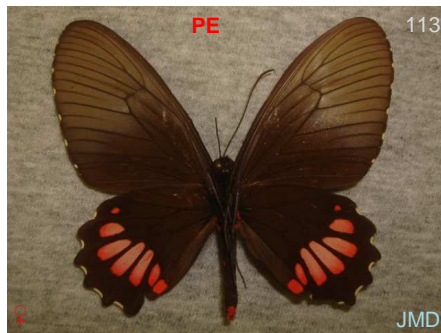
*Parides lysander brissonius* VZ-S PE



*Parides lysander brissonius* VZ-S PE



*Parides lysander brissonius* VZ-S PE



*Parides lysander brissonius* VZ-S PE



*Parides lysander brissonius* VZ-S PE





*Parides neophilus olivencius* N VZ-BO



*Parides neophilus olivencius* W VZ-BO



*Parides neophilus olivencius* N VZ-BO



*Parides neophilus olivencius* N VZ-BO



*Parides neophilus olivencius* W VZ-BO



*Parides orellana* VZ-E PE



*Parides orellana* VZ-E PE



*Parides orellana* VZ-E PE



*Parides orellana* VZ-E PE



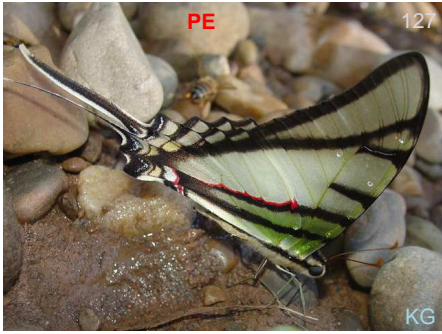
*Parides sesostris sesostris* Z-BR,GU



*Parides sesostris sesostris* Z-BR,GU



*Protesilaus molops hetaerius* CO-BO



*Protesilaus telesilaus telesilaus* O-BO,BR



*Pterourus xanthopleura* CO-PE



*Pterourus xanthopleura* CO-PE

## Pieridae

### Whites and Sulphurs

#### Dismorphiinae

##### Mimic-Whites

Odd shaped forewings, smaller butterflies, prefer shaded areas. They are pale yellow or white with black marking on the dorsals. Females have rounder forewings. Sit with wings closed.



*Moschoneura pinthous*



*Moschoneura pinthous*



*Moschoneura pinthous*



*Moschoneura pinthous*



*Moschoneura pinthous*



*Moschoneura pinthous*

#### Pierinae

##### Whites

Variable, many are white but some are black with narrow white, yellow or even red patches. Many species of Catasticta are very difficult to separate from a live ventral photo. They like to come to wet sand or edges of flowing water. Sit with wings closed.



*Glutophrissa drusilla drusilla*



*Glutophrissa drusilla drusilla*



*Glutophrissa drusilla drusilla*



*Hesperocharis nera nera*



*Hesperocharis nera nera*



*Hesperocharis nera nera*



*Melete leucanthe leucanthe*



*Melete leucanthe leucanthe*



*Melete leucanthe leucanthe*



*Melete leucanthe leucanthe*



*Melete leucanthe leucanthe*



*Melete lycimnia reducta*



*Melete lycimnia reducta*



*Melete lycimnia reducta*



*Melete lycimnia reducta*



*Melete lycimnia reducta*



*Melete lycimnia reducta*



*Perrhybris lorena lorena*



*Perrhybris lorena lorena*



*Perrhybris lorena lorena*



*Perrhybris lorena lorena*



*Perrhybris lorena lorena*



*Perrhybris lorena lorena*



*Perrhybris pamela glessaria*

## Coliadinae

### Sulphurs

Some large, but most are medium to smaller sizes. Common in meadows and gardens, roadside edges. Difficult to separate to species just on ventral live photos, you often need to see the pattern of the black on the edges of the upper wings. Sit with wings c



*Anteos menippe*



*Anteos menippe*



*Anteos menippe*



*Anteos menippe*



*Anteos menippe*



*Anteos menippe*



*Anteos menippe*



*Aphrissa statira statira*



*Aphrissa statira statira*



*Aphrissa statira statira*



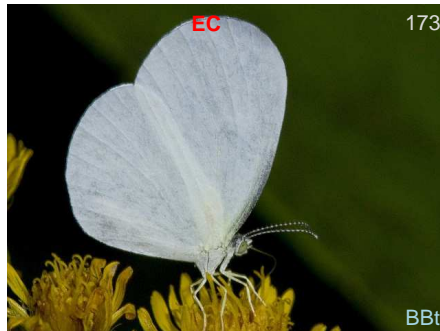
*Aphrissa statira statira*



*Leucidia brephos*



*Leucidia brephos*



*Leucidia brephos*



*Phoebis agarithe agarithe*



*Phoebis sennae marcellina*



*Phoebis sennae marcellina*



*Phoebis sennae marcellina*



*Phoebis sennae marcellina*



*Phoebis sennae marcellina*



*Rhabdodryas trite trite*



*Rhabdodryas trite trite*

## Riodinidae

### Metalmarks

#### Riodininae

#### Metalmarks



*Hyphilaria parthenis* N-BO, BR



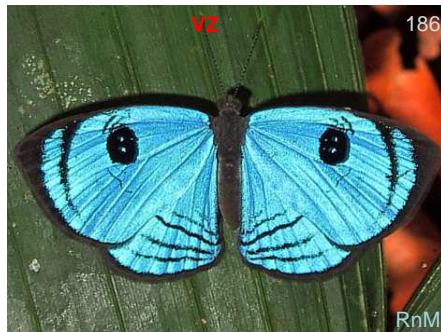
*Hyphilaria parthenis* N-BO, BR



*Hyphilaria parthenis* N-BO, BR



*Mesosemia machaera dealbata* CO



*Semomesia alyattes alyattes*



*Semomesia capanea*



*Semomesia croesus*



*Semomesia croesus*



*Semomesia croesus*



*Semomesia croesus*



*Alesa lipara* CO-BR



*Eurybia dardus annulata* CO-PE





*Eurybia nicaeus erythinosa* CO-EC



*Eurybia nicaeus erythinosa* CO-EC



*Eurybia nicaeus erythinosa* CO-EC



*Eurybia nicaeus erythinosa* CO-EC



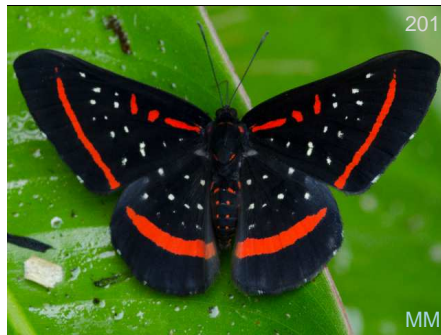
*Amarynthis meneria* CO-BR



*Amarynthis meneria* CO-BR



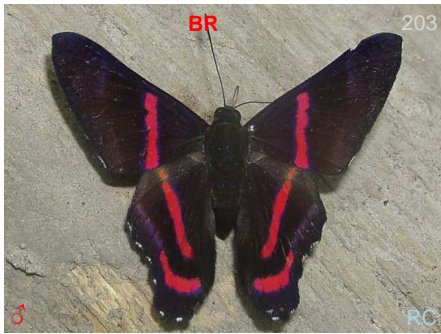
*Amarynthis meneria* CO-BR



*Amarynthis meneria* CO-BR



*Amarynthis meneria* CO-BR



*Ancylyris etias etias* CO-PE



*Ancylyris etias etias* CO-PE



*Ancylyris etias etias* CO-PE



*Ancyluris etias etias* CO-PE



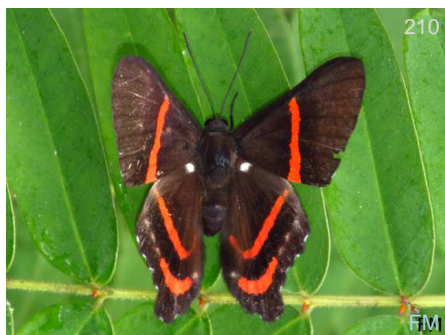
*Ancyluris inca cacica* CO



*Ancyluris inca cacica* CO



*Ancyluris meliboeus eudaemon* CO-BO



*Ancyluris meliboeus eudaemon* CO-BO



*Baeotis euprepes* O,FG,BR



*Baeotis euprepes* O,FG,BR



*Baeotis euprepes* O,FG,BR



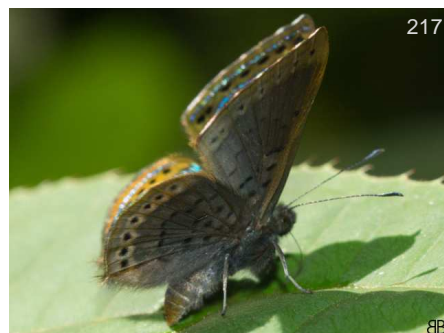
*Baeotis euprepes* O,FG,BR



*Chalodeta chaonitis* MX-BR



*Chalodeta chaonitis* MX-BR



*Chalodeta chaonitis* MX-BR



*Charis anius* HN-BR



*Charis anius* HN-BR



*Charis anius* HN-BR



*Chorinea licursis* CO? BR



*Chorinea licursis* CO? BR



*Detritivora sp x mitu*



*Detritivora sp x mitu*



*Detritivora sp x mitu*



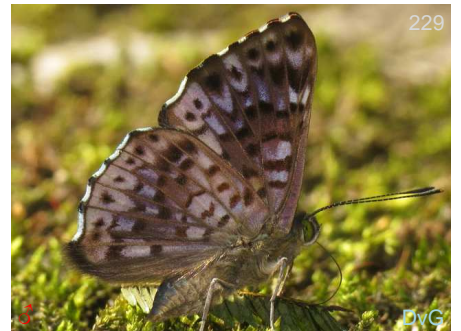
*Lasaia agesilas agesilas* R-BO, BR



*Lasaia agesilas agesilas* R-BO, BR



*Lasaia agesilas agesilas* R-BO, BR



*Lasaia agesilas agesilas* R-BO, BR



*Lasaia agesilas agesilas* R-BO,BR



*Lasaia agesilas agesilas* R-BO,BR



*Lasaia agesilas agesilas* R-BO,BR



*Lasaia agesilas agesilas* R-BO,BR



*Lasaia agesilas agesilas* R-BO,BR



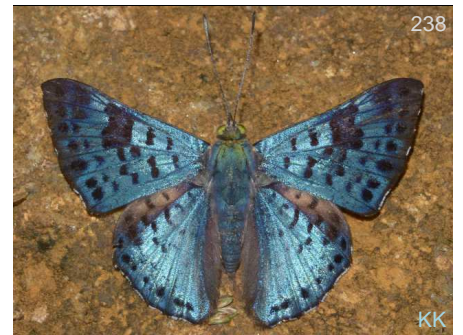
*Lasaia agesilas agesilas* R-BO,BR



*Lasaia agesilas agesilas* R-BO,BR



*Lasaia agesilas agesilas* R-BO,BR



*Lasaia pseudomeris* CR-PE



*Rhetus periander*



*Rhetus periander*



*Rhetus periander*



242

KK

*Rhetus periander*



243

BB

*Rhetus periander*



244

BB

*Rhetus periander*



245

KK

*Rhetus periander*



246

BB

*Rhetus periander*



247

KG

*Rhetus periander*



248

FM

*Rhetus periander*



249

FM

*Rhetus periander*



250

BB

*Rhetus periander*



251

BB

*Thisbe irenea belides*



252

BB

*Thisbe irenea belides*



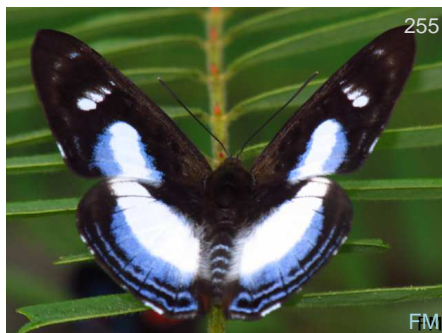
253

BB

*Thisbe irenea belides*



*Thisbe irenea belides*



*Thisbe irenea belides*



*Thisbe irenea belides*



*Thisbe irenea belides*



*Thisbe irenea belides*



*Thisbe irenea belides*



*Anteros allectus allectus*



*Anteros allectus allectus*



*Anteros allectus allectus*



*Anteros bracteata*

CO-BO



*Anteros bracteata*

CO-BO



*Anteros formosus formosus*



266

BB

*Anteros formosus formosus*



267

BB

*Anteros formosus formosus*



268

BB

*Anteros formosus formosus*



269

BB

*Anteros formosus formosus*



270

DvG

*Helicopsis cupido*

I-Amazon



271

DvG

*Helicopsis cupido*

I-Amazon



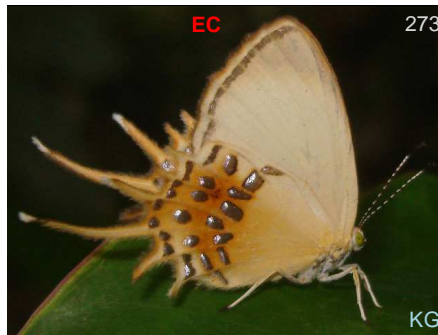
272

BR

GC

*Helicopsis cupido*

I-Amazon



273

EC

KG

*Helicopsis cupido*

I-Amazon



274

KK

*Helicopsis gnidus*

O-BR,SU



275

SS

*Helicopsis gnidus*

O-BR,SU



276

BB

*Sarota acantus*



277

DvG

*Sarota acantus*



*Sarota chrysus*



*Sarota chrysus*



*Sarota chrysus*



*Sarota gyas*



*Sarota gyas*



*Emesis fastidiosa*



*Emesis lucinda*



*Emesis lucinda*



*Emesis lucinda*



*Adelotypa asemna*



*Adelotypa asemna*



*Adelotypa huebneri*





*Adolotya penthea auseris*



*Adolotya penthea auseris*



*Calospila lucianus lucianus* CR-GU



*Calospila lucianus lucianus* CR-GU



*Calospila lucianus lucianus* CR-GU



*Calospila lucianus lucianus* CR-GU



*Calospila lucianus lucianus* CR-GU



*Calospila lucianus lucianus* CR-GU



*Calospila lucianus lucianus* CR-GU



*Juditha caucana* MX-W EC



*Nymphidium acheris erymanthus*



*Nymphidium baeotia*



*Nymphidium cachrus*



*Nymphidium cachrus*



*Nymphidium caricae erubescens*



*Nymphidium caricae erubescens*



*Nymphidium caricae erubescens*



*Nymphidium caricae erubescens*



*Nymphidium leucosia semiramis*



*Nymphidium leucosia semiramis*



*Nymphidium leucosia semiramis*



*Nymphidium lisimon lisimon*



*Nymphidium lisimon lisimon*



*Nymphidium mantus*



*Nymphidium mantus*



*Nymphidium mantus*



*Nymphidium ninias*



*Synargis ochra*



*Stalactis calliope calliope*

## Euselasiinae

### Metalmarks

Se posan casi siempre por debajo de las hojas en posición hacia abajo. De colores cafés y cremas.

They sit in the leaves in uptigth position. Brown and cream colors.



*Euselasia baucis aethiops*



*Euselasia candaria*



*Euselasia candaria*



*Euselasia candaria*



*Euselasia candaria*



*Euselasia candaria*



*Euselasia euriteus* 'E,BR,SU



*Euselasia euriteus* 'E,BR,SU



*Euselasia issoria* CO-PE



*Euselasia lisias* CO-SU



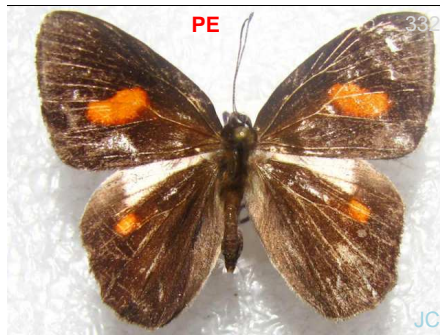
*Euselasia lisias* CO-SU



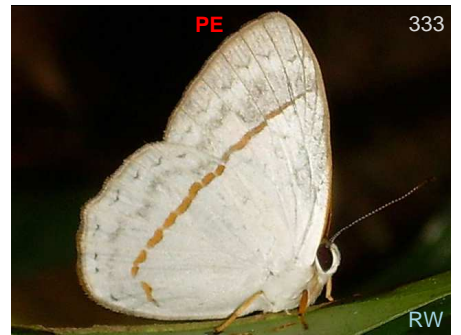
*Euselasia orfita* CO



*Euselasia orfita* CO



*Euselasia teleclus* O-PE,SU



*Euselasia teleclus* O-PE,SU

# Lycaenidae

## Blues and Hairstreaks

### Theclinae

#### Hairstreaks



*Arawacus separata*

CO-PG



*Arawacus separata*

CO-PG



*Calycopis anthora*

CO-BR



*Celmia celmus*

MX-PG



*Celmia celmus*

MX-PG



*Celmia celmus*

MX-PG



*Celmia celmus*

MX-PG



*Celmia celmus*

MX-PG



*Celmia celmus*

MX-PG



*Ministrymon una una*

CO-BR



*Ministrymon una una*

CO-BR



*Ministrymon una una*

CO-BR



346

BB

*Ministrymon una una*

CO-BR



347

KK

*Ministrymon una una*

CO-BR



348

FM

*Panthiades aeolus*

CO-BR



349

DvG

*Panthiades aeolus*

CO-BR



350

BB

*Panthiades bitias*

MX-BR



351

BB

*Panthiades bitias*

MX-BR



352

BB

*Panthiades bitias*

MX-BR



353

BB

*Panthiades bitias*

MX-BR



354

BB

*Panthiades bitias*

MX-BR



355

BB

*Panthiades bitias*

MX-BR



356

SS

*Panthiades bitias*

MX-BR



357

BB

*Panthiades bitias*

MX-BR



*Pseudolycaena marsyas* NI?-AR BB



*Pseudolycaena marsyas* NI?-AR BB



*Pseudolycaena marsyas* NI?-AR KK



*Pseudolycaena marsyas* NI?-AR FM



*Pseudolycaena marsyas* NI?-AR BB



*Pseudolycaena marsyas* NI?-AR BB



*Pseudolycaena marsyas* NI?-AR BB



*Theclopsis lydus* CO-BR MM



*Theclopsis lydus* CO-BR FM



*Theritas hemon* MX-BR BBt



*Theritas hemon* MX-BR BBt



*Theritas hemon* MX-BR PN GC



370

BB

*Theritas hemon*

MX-BR



371

SS

*Thestius meridionalis*

VZ-BO



372

FM

*Thestius meridionalis*

VZ-BO



373

DvG

*Thestius meridionalis*

VZ-BO



374

KK

*Tmolus cydrara*

MX-BR



375

FM

*Tmolus cydrara*

MX-BR



# Nymphalidae

## Brushfoots

### Heliconiinae

#### Longwings



*Dione juno juno*

NE SoAm



*Dione juno juno*

NE SoAm



*Dione juno juno*

NE SoAm



*Dryas iulia iulia*



*Dryas iulia iulia*



*Dryas iulia iulia*



*Dryas iulia iulia*



*Dryas iulia iulia*



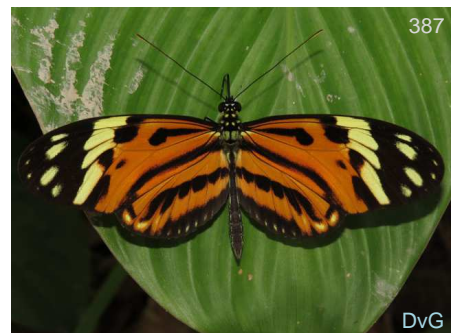
*Dryas iulia iulia*



*Heliconius hecale ennius*



*Heliconius hecale ennius*



*Heliconius numata superioris*



*Heliconius numata superioris*



*Heliconius sara sara*



*Heliconius sara sara*



*Heliconius sara sara*



*Heliconius sara sara*



*Heliconius sara sara*



*Heliconius sara sara*



*Laparus doris doris*



*Laparus doris doris*



*Laparus doris doris*



*Laparus doris doris*



*Laparus doris doris*



*Laparus doris doris*



*Laparus doris doris*



*Laparus doris doris*



*Laparus doris doris*



*Laparus doris doris*



*Laparus doris doris*



*Neruda aoede bartletti*



*Neruda aoede bartletti*



*Philaethria dido dido*



*Philaethria dido dido*

Nymphalinae  
Brushfoots



*Baeotus beotus* mz basin



*Baeotus beotus* mz basin



*Baeotus beotus* mz basin



*Baeotus beotus* mz basin



*Baeotus beotus* mz basin



*Baeotus japetus* O-PE, BR



*Historis acheronta acheronta* MX-BR



*Historis acheronta acheronta* MX-BR



*Colobura dirce dirce* MX-AR



*Colobura dirce dirce* MX-AR



*Colobura dirce dirce* MX-AR



*Hypanartia lethe lethe*



*Hypanartia lethe lethe*



*Hypanartia lethe lethe*



*Anartia jatrophae jatrophae*



*Anartia jatrophae jatrophae*



*Anartia jatrophae jatrophae*



*Anartia jatrophae jatrophae*



*Junonia evarete*



*Junonia evarete*



*Castilia ofella*

MX-VZ



*Castilia ofella*

MX-VZ



*Castilia ofella*

MX-VZ



*Castilia ofella*

MX-VZ



*Castilia ofella* MX-VZ



*Castilia ofella* MX-VZ



*Castilia ofella* MX-VZ



*Eresia eunice eunice*

## Limnitiidae

### Sisters

Mainly africana y asiatica some Namerica



*Adelpha capucinus capucinus* VZ-BO



*Adelpha capucinus capucinus* VZ-BO



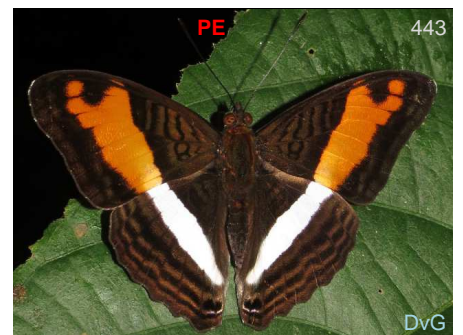
*Adelpha capucinus capucinus* VZ-BO



*Adelpha capucinus capucinus* VZ-BO



*Adelpha capucinus capucinus* VZ-BO



*Adelpha cocala cocala* Z-BO, BR



*Adelpha cocala cocala* Z-BO, BR



*Adelpha cocala cocala* Z-BO, BR



*Adelpha cocala cocala* Z-BO, BR



*Adelpha cocala cocala* Z-BO, BR



*Adelpha cocala cocala* Z-BO, BR



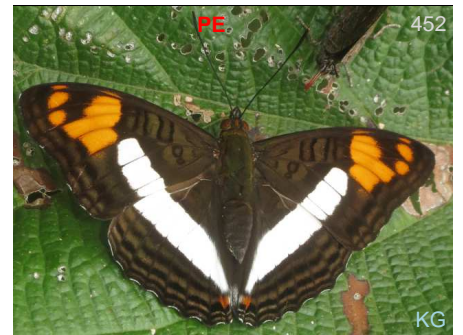
*Adelpha cytherea olbia* CO-EC



*Adelpha cytherea olbia* CO-EC



*Adelpha cytherea olbia* CO-EC



*Adelpha erotia erotia* MX-BR



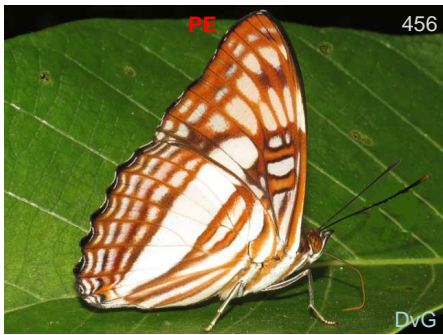
*Adelpha erotia erotia* MX-BR



*Adelpha erotia erotia* MX-BR



*Adelpha erotia erotia* MX-BR



*Adelpha erotia erotia* MX-BR



*Adelpha mesentina* CO-BR



*Adelpha mesentina* CO-BR



*Adelpha mesentina* CO-BR



*Adelpha naxia naxia* X-BO, BR



*Adelpha naxia naxia* X-BO, BR

## Charaxinae

### Leafwings

Larger butterflies, strong fliers, they usually sit with wings closed, then flash their wings open showing brilliant blue, purple or orange above. They look like dried leaves when wings are closed. They do not come to flowers, but like excrement, urine an



*Fountainia ryphea ryphea* MX-AMZ



*Fountainia ryphea ryphea* MX-AMZ



*Fountainia ryphea ryphea* MX-AMZ



*Fountainia ryphea ryphea* MX-AMZ



*Fountainia ryphea ryphea* MX-AMZ



*Fountainia ryphea ryphea* MX-AMZ





*Fountainea ryphea ryphea* MX-AMZ



*Memphis glauce glauce*



*Memphis glauce glauce*



*Memphis leonida leonida* CO?-BR



*Memphis moruus moruus*



*Memphis philumena philumena*



*Memphis polycarmes* CO-BR



*Memphis polycarmes* CO-BR



*Memphis polycarmes* CO-BR



*Memphis polycarmes* CO-BR



*Zaretis itys itys* MX-Amz



*Zaretis itys itys* MX-Amz



*Zaretis itys itys*

MX-Amz

480

FM



*Zaretis itys itys*

MX-Amz

481

BB



*Archaeoprepona amphimachus amphimachus*

482

KG



*Archaeoprepona amphimachus amphimachus*

483

BB



*Archaeoprepona demophon demophon*

484



*Archaeoprepona demophon demophon*

485

BB



*Archaeoprepona demophon demophon*

486

FM



*Archaeoprepona demophon demophon*

487



*Archaeoprepona demophon demophon*

488

BB



*Archaeoprepona demophon demophon*

489

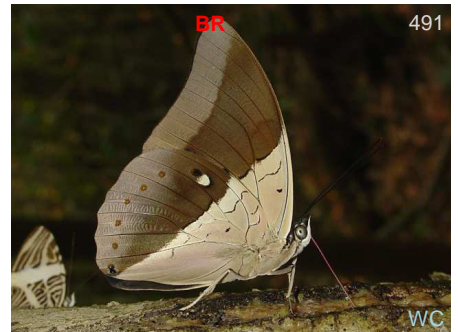
BB



*Archaeoprepona demophon demophon*

490

BB



*Archaeoprepona meander meander*

491

WC

MX-BR

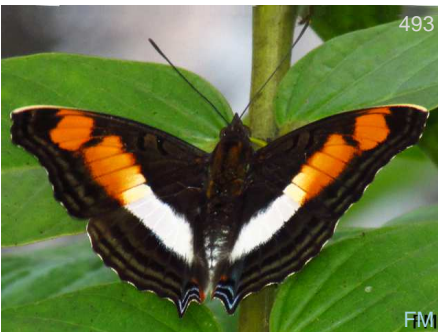


*Prepona dexamenes dexamenes*

## Apaturinae

### Emperors

Only a few widespread species, usually bright blue triangle above, silver or brownish below. They like wet dirt and are strong fliers.



*Doxocopa linda linda*



*Doxocopa linda linda*

## Satyrinae

### Satyr, Morphos, and Owls



*Antirrhoea philaretos philaretos* CO



*Antirrhoea philaretos philaretos* CO



*Antirrhoea philaretos philaretos* CO



*Antirrhoea philaretos philaretos* CO



*Morpho achilles phokylides*



*Morpho achilles phokylides*



*Morpho cisseis phanodemus*



*Morpho deidamia deidamia*



*Morpho deidamia deidamia*



*Morpho deidamia deidamia*



*Morpho helenor theodorus*



*Morpho helenor theodorus*



*Morpho helenor theodorus*



*Morpho helenor theodorus*



*Morpho marcus intermedia*



*Morpho menelaus offenbachi*



*Morpho menelaus offenbachi*



*Morpho menelaus offenbachi*



*Bia actorion* CO-BR FM



*Brassolis sophorae luridus* CO SS



*Caligo eurilochus eurilochus* SoAm KG



*Caligo eurilochus eurilochus* SoAm DW



*Caligo eurilochus eurilochus* SoAm KK



*Caligo teucer obidonus* CO-PG FM



*Opsiphanes sp x mitu* KK



*Cithaerias andromeda* CO-BR DA



*Cithaerias andromeda* CO-BR RR GC



*Cithaerias andromeda* CO-BR RR GC



*Cithaerias andromeda* CO-BR DA



*Cithaerias pireta pireta* GT-CO DW



*Cithaerias pireta pireta* GT-CO



*Cithaerias pireta pireta* GT-CO



*Cithaerias pireta pireta* GT-CO



*Cithaerias pireta pireta* GT-CO



*Cithaerias pireta pireta* GT-CO



*Cithaerias pyritosa* CO-BR



*Haetera piera negra*



*Haetera piera negra*



*Pierella astyoche astyoche*



*Pierella lamia chalybaea* CO-BR



*Pierella lamia lamia*



*Pierella lamia lamia*



*Pierella lamia lamia*



*Chloreuptychia agatha*

CO-BR



*Chloreuptychia agatha*

CO-BR



*Chloreuptychia arnaca*

GT-BR



*Chloreuptychia arnaca*

GT-BR



*Chloreuptychia arnaca*

GT-BR



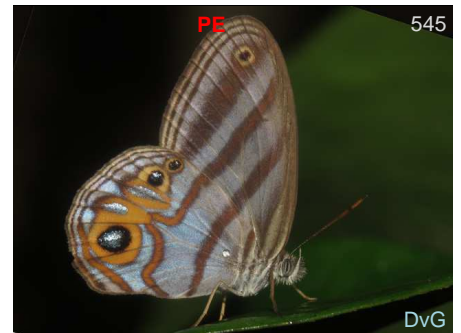
*Chloreuptychia arnaca*

GT-BR



*Chloreuptychia arnaca*

GT-BR



*Chloreuptychia callichloris*

CO-BR



*Chloreuptychia callichloris*

CO-BR



*Erichthodes antonina*

VZ-BR



*Euptychia mollina*



549

*Euptychia mollina*



550

*Euptychia mollina*



551

*Euptychia westwoodi*



552

*Euptychia westwoodi*



553

*Euptychia westwoodi*



554

*Euptychia westwoodi*



555

*Euptychia westwoodi*



556

*Hermeuptychia hermes*



557

*Hermeuptychia hermes*



558

*Hermeuptychia hermes*



559

*Hermeuptychia hermes*



560

*Hermeuptychia hermes*





*Hermeuptychia hermes*



*Hermeuptychia hermes*



*Hermeuptychia hermes*



*Hermeuptychia hermes*



*Hermeuptychia hermes*



*Magneuptychia fugitiva*



*Magneuptychia gera gera*



*Magneuptychia gera gera*



*Magneuptychia gera gera*



*Magneuptychia gera gera*



*Magneuptychia gera gera*



*Magneuptychia libye*



*Magneptychia libye*



*Magneptychia metagera*



*Megeptychia antonoe*



*Megeptychia antonoe*



*Pareptychia hesionides*



*Taygetis thamyra*



*Taygetis thamyra*



*Taygetis thamyra*



*Taygetis thamyra*



*Taygetis thamyra*

## Danainae

### Monarchs & Clearwings

Tribe Danaini/Monarchs – orange/rust colored butterflies, fairly good sized, famous North American migrants.

Tribe Ithomiini/Clearwings & Tigerwings – crystal or transparent winged, or orange and black striped. They usually fly in shaded areas, very slow



583

*Aeria eurimedia eurimedia*



584

*Aeria eurimedia eurimedia*



585

*Aeria eurimedia eurimedia*



586

*Forbestra equicola equicola*



587

*Melinaea ludovica ludovica*

## Cyrestinae

### Daggerwings

Larger butterflies with long, pointed tails, like daggers in English. Often sit on wet dirt with wings open. Many are all brown or all orange with thin vertical stripes.



588

*Marpesia berania berania*



589

*Marpesia berania berania*



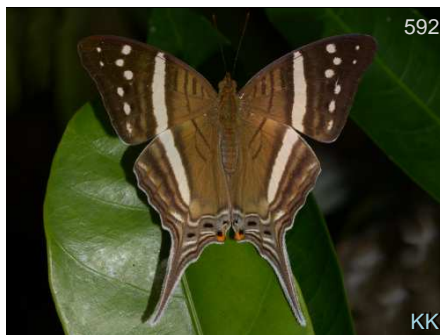
590

*Marpesia berania berania*



591

*Marpesia crethon*



592

*Marpesia crethon*



593

*Marpesia crethon*



*Marpesia crethon*



*Marpesia crethon*



*Marpesia crethon*



*Marpesia orsilochus*



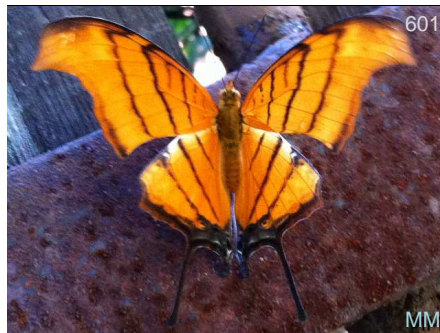
*Marpesia orsilochus*



*Marpesia petreus petreus*



*Marpesia petreus petreus*



*Marpesia petreus petreus*



*Marpesia petreus petreus*



*Marpesia petreus petreus*



*Marpesia themistocles norica*



*Marpesia themistocles norica*

## Biblidinae

### Tropical Brushfoots

Medium sized butterflies, varied colors, many are widespread. Includes 88's.



*Catonephele acontius acontius* O-PE,BR



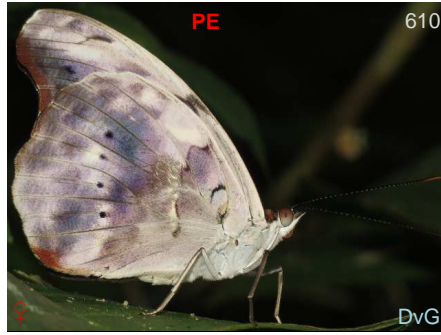
*Catonephele acontius acontius* O-PE,BR



*Catonephele acontius acontius* O-PE,BR



*Catonephele acontius acontius* O-PE,BR



*Catonephele acontius acontius* O-PE,BR



*Catonephele acontius acontius* O-PE,BR



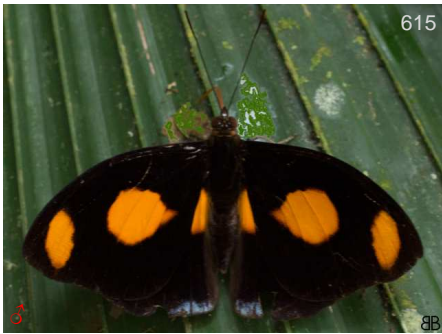
*Catonephele acontius acontius* O-PE,BR



*Catonephele acontius acontius* O-PE,BR



*Catonephele acontius acontius* O-PE,BR



*Catonephele numilia esite* MX-W EC



*Catonephele numilia esite* MX-W EC



*Catonephele numilia esite* MX-W EC



*Catonephele numilia esite* MX-W EC



*Catonephele numilia esite* MX-W EC



*Catonephele numilia esite* MX-W EC



*Catonephele numilia esite* MX-W EC



*Catonephele numilia numilia* CO-SU



*Catonephele numilia numilia* CO-SU



*Eunica alpais alpais* Amazon



*Eunica alpais alpais* Amazon



*Eunica alpais alpais* Amazon



*Eunica alpais alpais* Amazon



*Eunica alpais alpais* Amazon



*Eunica anna* U-PE, BR



630

FM

*Eunica anna*

U-PE,BR



631

FM

*Eunica clytia*

'N-PE,BR



632

FM

*Eunica clytia*

'N-PE,BR



633

KK

*Eunica clytia*

N-PE,BR



634

BB

*Eunica malvina malvina*

CO-BR



635

BB

*Eunica malvina malvina*

CO-BR



BB

*Eunica mygdonia mygdonia*

CO-PE



637

FM

*Eunica orphise*

CO-BR



638

BBt

*Eunica orphise*

CO-BR



639

FM

*Eunica orphise*

CO-BR



640

KK

*Nessaea obrinus obrinus*

CO



641

KK

*Nessaea obrinus obrinus*

CO



*Pyrrhogyra amphiro amphiro* CO-BR



*Pyrrhogyra amphiro amphiro* CO-BR



*Pyrrhogyra amphiro amphiro* CO-BR



*Pyrrhogyra crameri nautaca* CO



*Pyrrhogyra crameri nautaca* CO



*Pyrrhogyra crameri undine* CO



*Pyrrhogyra crameri undine* CO



*Pyrrhogyra crameri undine* CO



*Pyrrhogyra crameri undine* CO



*Temenis laothoe laothoe* CO-BR



*Temenis laothoe laothoe* CO-BR



*Temenis laothoe laothoe* CO-BR





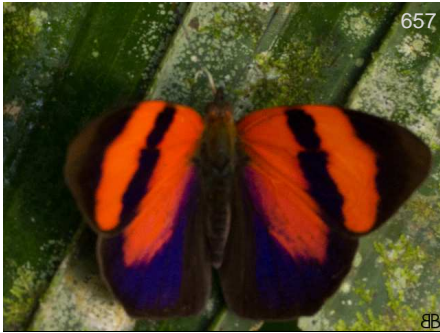
*Temenis laothoe laothoe* CO-BR



*Temenis laothoe laothoe* CO-BR



*Temenis laothoe laothoe* CO-BR



*Temenis pulchra pulchra* CO



*Temenis pulchra pulchra* CO



*Temenis pulchra pulchra* CO



*Temenis pulchra pulchra* CO



*Temenis pulchra pulchra* CO



*Temenis pulchra pulchra* CO



*Temenis pulchra pulchra* CO



*Temenis pulchra pulchra* CO



*Dynamine artemisia artemisia*



666

*Dynamine artemisia artemisia*



667

*Dynamine artemisia artemisia*



668

*Dynamine erchia*

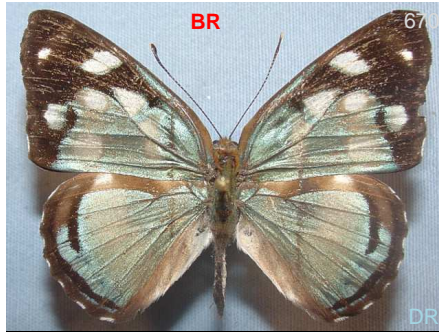
CO-BR



669

*Dynamine erchia*

CO-BR



670

*Dynamine myrson myrson*

CO-BR



671

*Dynamine myrson myrson*

CO-BR



672

*Dynamine postverta mexicana*

MX-CO



673

*Dynamine postverta mexicana*

MX-CO



674

*Dynamine postverta mexicana*

MX-CO



675

*Dynamine postverta mexicana*

MX-CO



676

*Dynamine postverta mexicana*

MX-CO

This catalog is the result of the accumulative efforts from a large number of people. The following are the photographers who have contributed their photos to this work, thank you very much.

## Fotógrafos - Photographers

BB	Juan Guillermo Jaramillo Velasquez	BBn	Bill Bouton	BBt	Bill Berthet
BH	Bob Hardwick	DA	David Acosta Silva	DR	David Robacker
DvG	David Geale	DW	Dan Wade	FH	Fred Heath
FM	Fredy Montero	GC	Gill Carter	GN	Gregory Nielsen
JAB	Johnnier Arango Bermudez	JB	Jim Brock	JCG	Jose Cerdeña Gutierrez
JJ	Jorge J Restrepo	JMD	John MacDonald	JSI	Joe Schelling
JSn	Jim Snyder	KG	Kim Garwood	KK	Ken Kertell
KP	Kevin Painter	KW	Kay Wade	Leo	Leopoldina Tapasco
MM	Martin Moreno	PB	Priscilla Brodtkin	RC	Rick Cech
RD	Rudy Doderó	RHy	Rich Hoyer	RnM	Renato Mattei
RW	Rob Westerduijn	SS	Shirley Sekarajasingham	TH	Tony Hoare
THn	Tom Horton	UFPR	Universidade Federal do Paraná, Cu	WC	Will Carter

## Agradecimientos - Acknowledgements

Este catálogo es el resultado del esfuerzo acumulativo de un gran número de colaboradores y fotógrafos a quienes damos las gracias.

Agradecemos a los siguientes expertos que generosamente han ayudado en la identificación de algunas de nuestras fotos: Stephane Attal, Andrew Brower, Bernard Hermier, James Mallet, Andrew Neild, Gregory Nielsen, Tomasz Pycrz, Julian Salazar, Aaron Soh and Keith Willmott. Todos los errores en identificación son responsabilidad de Kim Garwood o Juan Guillermo Jaramillo V.

This catalog is the result of cumulative effort of many collaborators and photographers whom we thank.

We thank the following experts who generously helped in identifying some of our photos: Stephane Attal, Andrew Brower, Bernard Hermier, James Mallet, Andrew Neild, Gregory Nielsen, Tomasz Pycrz, Julian Salazar, Aaron Soh and Keith Willmott. All errors in identifications are the responsibility of Kim Garwood and Juan Guillermo Jaramillo.

Numero de especies en la base de datos 3.863 y con subespecies 5.039, numero de fotos 8.415, especies y subespecies con foto 2.791, con la colaboracion de 136 fotografos.

Number of species in database 3.863 and with subspecies 5.039, number of photos 8.415, species and subspecies with photo 2.791, with the collaboration of 136 photographers.

## Bibliografía - Bibliography

- AMARILLO-S. A., M.G. ANDRADE-C. 1996. *Clave sinóptica para las familias y subfamilias de mariposas y polillas colombianas*. 117 – 147. En Andrade-C. M.G., G. Amat, F. Fernandez (Eds.) *Insectos de Colombia, estudios escogidos*. Academia Colombiana de Ciencias Exactas, Físicas y Naturales Colección Jorge Alvarez Lleras No. 10 Coeditado con el Centro Editorial Javeriano. 541pp.
- ANDRADE, M.G., 2002.- *Biodiversidad de las mariposas (Lep. Rhop.) de Colombia* (en) COSTA, C. & MELIC, A. (eds.). Red Iberoamericana de Biogeografía y Entomología Sistemática. PrIBES-SEA, Zaragoza, España.
- BLANDIN, P., 2007.- *The systematics of the genus Morpho*, Fabricius, 1807 (Lepidoptera Nymphalidae, Morphinae): 277 pp. Canterbury, Hillside Books
- BRIDGES, Ch. A. 1988. *Catalogue of Papilionidae & Pieridae (Lepidoptera: Rhopalocera)*. Published by Charles A. Bridges, Urbana, Illinois USA. 323 pp.
- BROWN, S. K., & FERNÁNDEZ F., 1985.- *Los Heliconiini (Lepidoptera, Nymphalidae) de Venezuela*. Bol. Entomol Ven. N.S. 3(4): 29-73
- CONSTANTINO, L.M. 1995.- *Revisión de la tribu Haeterini Herrich-Schaffer, 1864 en Colombia (Lepidoptera, Nymphalidae: Satyrinae)* Revista de la Sociedad Hispano Luso Americana de Lepidopterología SHILAP 23 (89):49-76.
- D'ABRERA, B., 1981-1995.- *Butterflies of the Neotropical Region*. 7 vols: 1260 pp. + pls. Hill House, Melbourne-Victoria.
- D'ABRERA, B. (1987a) *Butterflies of the Neotropical Region Part III: Brassolidae, Acraeidae y Nymphalidae (partim)*. Hill House. 524 pp.
- D'ABRERA, B. (1984) *Butterflies of the Neotropical Region Part II: Danaidae, Ithomiidae, Heliconiidae y Morphidae*. Hill House Publishers (Victoria) Australia. 381 pp.
- D'ABRERA, B. (1981) *Butterflies of the Neotropical Region. Part I: Papilionidae & Pieridae*. Lansdowne Editions.
- D'ABRERA, B. (1987b) *Butterflies of the Neotropical Region Part IV: Nymphalidae (Partim)*. Hill House.
- D'ABRERA, B. (1988) *Butterflies of the Neotropical Region. Part V. Nymphalidae (Cont.) & Satyridae*. Hill House Publishers Victoria, Australia.
- DE VRIES, P. (1987) *The Butterflies of Costa Rica and their Natural History. Papilionidae, Pieridae, Nymphalidae*. Princeton University Press.
- DEVRIES, Ph. 1987. *The Butterflies of Costa Rica and their Natural History Papilionidae, Pieridae, Nymphalidae*. Princeton University Press, 327 pp.
- DEVRIES, Ph. 1997. *The Butterflies of Costa Rica and their Natural History Vol II: Riodinidae*. Princeton University Press, 288 pp.
- DE VRIES, P. (1996) *The Butterflies of Costa Rica and their Natural History. Riodininae*. Princeton University Press. 227 pp.
- GUTIÉRREZ, A., 1998.- *Invertebrados, Mariposas ropalocera (en) Caracterización Ecológica Preliminar de las riberas del río Inírida (Guainía), en el área de influencia de la comunidad de La Ceiba: 70-77*. Universidad Nacional de Colombia, ICN.-C.D.A. informe final, Bogotá
- HALL, J. & WILLMOTT, K. (1996) *Notes on the genus Argyrogrammana, Part 2, with one new species. (Lepidoptera: Riodininae)*. Tropical Lepidoptera 7(1): 71-80.
- HIGUERA, M. & OSPINA, M., 2009.- *Mariposas diurnas (en) Caracterización de la Biodiversidad de la Selva de Matavén (Vichada): 132-141*. Instituto de investigaciones Alexander von Humboldt- Asociación de Cabildos Indígenas Matavén, Bogotá.
- HUERTAS, B. & ARIAS, J.J., 2000.- *Mariposas colectadas por la expedición Colombia 98 a la Serranía de los Churumbelos, Cauca. Distribución altitudinal y diversidad de especies (Lep. Rhop. Pap.)*: Tesis: 82 pp. + 144 figs. U. Ped. Nacional, Bogotá.
- LAMAS, G. 2004.- *Atlas of Neotropical Lepidoptera, Volume 5A. Checklist: Part 4A Hesperioidea - Papilionoidea*. Association for Tropical Lepidoptera. Scientific Publishers. Gainesville, Florida. USA. 439p.
- LAMAS, G., 2004.- *Checklist of Neotropical Lepidoptera, Part 4A, Hesperioidea- Papilionoidea*. (en) HEPPNER, J. (ed.) Atlas of Neotropical Lepidoptera. Florida, Gainesville: Association for Tropical Lepidoptera, xxxiv + 439 pp.
- LECROM, J.F., CONSTANTINO, L.M. & J.A. SALAZAR. 2002. *Mariposas de Colombia. Tomo 1: Familia Papilionidae*. Carlec, Ltda, Bogotá. 108 pp, 89 pl. Edición española
- LECROM, J.F., LLORENTE, J., CONSTANTINO, L.M. & J.A. SALAZAR. 2004. *Mariposas de Colombia. Tomo 2. Familia Pieridae*. Carlec, Ltda, Bogotá. 180 pp
- NEILD A.F., 2010.- *The Butterflies of Venezuela Part 2: Nymphalidae 2: (Acraeinae, Libytheinae, Ithomiinae, Morphinae): 275 pp*. Meridian Publications. Greenwich, London
- NEILD A.F., 1996.- *The Butterflies of Venezuela Part 1: Nymphalidae I (Limenitidinae, Apaturinae, Charaxinae): 144 pp*. Meridian Publications. Greenwich, London
- OSPINA, M. & FAGUA, G., 2007.- *La Entomofauna de la región sur de la Amazonia Colombiana (en) Diversidad biológica y cultural del sur de la Amazonia Colombiana- Diagnóstico: 178-181*. Instituto de investigaciones Alexander von Humboldt-Corpoamazonia- Instituto SINCHI, Parques Nacionales, Bogotá.
- PINZÓN, C.J., 2006-2009.- *Mariposas del bajo Caquetá y Apaporis (Amazonia Colombiana): Papilionidae, Pieridae, Nymphalidae, Riodinidae*. WATCHER FORSTER & KAPLAN prod. y BM Found. Conservación Internacional, Colombia. [www.conservation.org.co](http://www.conservation.org.co)
- PINZÓN-C. J., 2006, 2008.- *Mariposas del bajo Caquetá y Apaporis (Amazonia colombiana): Hesperioidea*. WATCHER FOSTER & KAPLAN prod. y BM Found. Conserv. Int. Col. [www.conservation.org.co](http://www.conservation.org.co)
- RODRÍGUEZ, G., MILLER, H. 2013. Inventario preliminar de los rhopalocera de Mitu, Vaupéz, Colombia (Insecta: Lepidoptera) *Boletín Científico. Mus. Hist. Nat. Universidad de Caldas* (Manizales, Colombia). 17 (1): 196 - 218
- RODRÍGUEZ, G., SALAZAR, J.A. & CONSTANTINO, L.M. 2010. *Estudio sobre las especies colombianas de Anteros Hubner (1819) (Lepidoptera: Riodinidae)* Boletín Científico. Mus. Hist. Nat. Universidad de Caldas

SALAZAR, J. A. 1993. *Contribución al conocimiento de los Morphinae colombianos: Morpho cypris Ww (Lep: Morph.)* (III). SHILAP Revista de Lepidopterología. 21 (84).

SALAZAR, J.A., 1995.- *Lista preliminar de las mariposas diurnas (Lep. Rhop.) que habitan en el departamento del Putumayo. Notas sobre la distribución en la zona Andina.* Colombia Amazónica, 8 (1): 11-69.

SALAZAR, J.A., RODRÍGUEZ, G., & L.M. CONSTANTINO, L.M.. 2009. *Contribución al conocimiento del genero Mesosemia Hubner, 1819 en Colombia y descripción de nuevos taxa (Lepidoptera: Riodinidae)* Boletín Científico. Mus. Hist. Nat. Universidad de. Caldas (Manizales, Colombia). 13 (2): 174-240.

SALAZAR, J.A., VARGAS, J.I., MORA, A.M. & BENAVIDES, J., 2010.- *Identificación preliminar de los Rhopalocera que habitan el Centro Experimental Amazónico (CEA), Mocoa-Putumayo, y algunas especies aptas para criar en cautiverio (Ins. Lep.).* Bol. Cient. Mus. Hist. Nat. U.de Caldas, 14 (1): 150-188 + figs

SPÄTH, M., 1999.- *Nymphalidae I, Agrias I* (in) BAUER, E. & FRANKENBACH, T (eds) Butterflies of the World: 12 pp. + 20 pls. Goecke & Evers, Keltern, Germany.

TYLER, H., K. S. BROWN JR. & K. WILSON 1994. *Swallowtail Butterflies of the Americas.* Scientific Publishers, Inc. Gainesville Fl. USA. 375 pp.

VÉLEZ, J.H. & SALAZAR, J.A., 1991.- *Mariposas de Colombia:* 167p. Villegas Editores, Bogotá.

## Para citar utilice - To quote use:

GARWOOD K., JARAMILLO J.G. Catálogo de las mariposas de Municipio de Mitú, Mitú, Vaupés, Colombia [en línea], BioButterfly Database. Disponible en: < <http://www.neotropicalbutterflies.com/> y la fecha de impresión jueves, 06 de abril de 2017

## Páginas web recomendadas - Recommended websites

Las siguientes páginas dan información complementaria al catálogo o han sido útiles en la identificación de especies:  
The following pages provide additional information to the catalog or have been useful in identifying species:

Información general de mariposas: [www.learnaboutbutterflies.com](http://www.learnaboutbutterflies.com)

Mariposas del neotrópico: [www.neotropicalbutterflies.com](http://www.neotropicalbutterflies.com)

Mariposas de Norte, Centro y Sur América, más Caribe: [www.butterfliesofamerica.com](http://www.butterfliesofamerica.com)

Mariposas del Parque Nacional Sangay – Ecuador: [www.sangay.eu/index.php?lang=en](http://www.sangay.eu/index.php?lang=en)

Fotografía de mariposas: [butterflyphotography-bb.blogspot.com](http://butterflyphotography-bb.blogspot.com) y vea video en [www.youtube.com/watch?v=-9-](http://www.youtube.com/watch?v=-9-)

*inf Especies por localidad 3CV para PDF - 10feb2016*



Este listado no es un índice, la numeración consecutiva sirve para contar las especies de la localidad, además el listado puede contener un número mayor de especies que el catálogo pues hay especies observadas, colectadas o reportadas en la literatura que no tienen aún fotos en la base de datos.

This list is not an index, the consecutive numbering is used to count the species of the locality, in addition the list may contain a greater number of species than the catalog as there are species observed, collected or reported in the literature that do not yet have photos in the database.

### Mariposas de Municipio de Mitú

## Hesperiidae

### Eudaminae

- 1 *Augiades criniscus*
- 2 *Autochton neis*

### Hesperiinae

- 3 *Aides aegita*
- 4 *Damas clavus*
- 5 *Molo visendus*
- 6 *Panoquina fusina sonta*
- 7 *Pyrrhopygopsis socrates socrates*

### Pyrginae

- 8 *Anastrus neaeris neaeris*
- 9 *Camptopleura auxo*
- 10 *Celaenorrhinus eligius eligius*
- 11 *Chiomara mithrax*
- 12 *Conognathus platon*
- 13 *Cyclosemia leppa*
- 14 *Gorgythion canda*
- 15 *Milanion clito*
- 16 *Pachyneuria damon*
- 17 *Pachyneuria duidae*
- 18 *Potamanaxas effusa effusa*
- 19 *Pythonides jovianus*
- 20 *Pythonides lerina*
- 21 *Quadrus deyrollei deyrollei*
- 22 *Sophista aristoteles aristoteles*

## Papilionidae

### Papilioninae

- 23 *Battus belus varus*
- 24 *Battus crassus crassus*
- 25 *Battus lycidas*

- 26 *Eurytides dolicaon dolicaon*
- 27 *Heraclides androgeus androgeus*
- 28 *Heraclides chiansiades mossi*
- 29 *Heraclides thoas cinyras*
- 30 *Heraclides torquatus torquatus*
- 31 *Mimoides ariarathes gayi*
- 32 *Mimoides pausanius pausanius*
- 33 *Neographium agesilaus autosilaus*
- 34 *Neographium thyastes thyastinus*
- 35 *Parides aeneas bolivar*
- 36 *Parides anchises drucei*
- 37 *Parides chabrias chabrias*
- 38 *Parides erithalion guillerminae*
- 39 *Parides lysander brissonius*
- 40 *Parides neophilus olivencius*
- 41 *Parides orellana*
- 42 *Parides sesostris sesostris*
- 43 *Parides vertumnus pyrophanus*
- 44 *Protesilaus aguiari*
- 45 *Protesilaus leucosilaus*
- 46 *Protesilaus molops hetaerius*
- 47 *Protesilaus telesilaus telesilaus*
- 48 *Pterourus xanthopleura*

## Pieridae

### Coliadinae

- 49 *Anteos menippe*
- 50 *Aphrissa statira statira*
- 51 *Eurema agave agave*
- 52 *Leucidia brephos*
- 53 *Phoebis agarithe agarithe*
- 54 *Phoebis sennae marcellina*
- 55 *Pyrisitia leuce leuce*

- 56 *Rhabdodryas trite trite*

### Dismorphiinae

- 57 *Moschoneura pinthous*
- 58 *Moschoneura pinthous monica*

### Pierinae

- 59 *Glutophrissa drusilla drusilla*
- 60 *Hesperocharis nera nera*
- 61 *Itabalia demophile charopus*
- 62 *Melete euryymnia euryymnia*
- 63 *Melete leucanthe leucanthe*
- 64 *Melete lycimnia reducta*
- 65 *Perrhybris lorena lorena*
- 66 *Perrhybris pamelia glessaria*
- 67 *Perrhybris pamelia boyi*

## Riodinidae

### Euselasiinae

- 68 *Euselasia baucis aethiops*
- 69 *Euselasia candaria*
- 70 *Euselasia dorina*
- 71 *Euselasia euriteus*
- 72 *Euselasia issoria*
- 73 *Euselasia lisias*
- 74 *Euselasia orfita*
- 75 *Euselasia teleclus*
- 76 *Euselasia thusnelda*

### Riodininae

- 77 *Adelotypa asemma*
- 78 *Adelotypa huebneri*
- 79 *Adelotypa penthea auseris*
- 80 *Alesa lipara*
- 81 *Amarynthis meneria*
- 82 *Ancyluris etias etias*

83 *Ancyluris inca cacica*  
84 *Ancyluris meliboeus*  
85 *Ancyluris meliboeus eudaemon*  
86 *Anteros allectus allectus*  
87 *Anteros bracteata*  
88 *Anteros formosus formosus*  
89 *Argyrogrammana glaucopis*  
90 *Argyrogrammana placibilis*  
91 *Baeotis euprepes*  
92 *Baeotis hisbon*  
93 *Calospila lucianus lucianus*  
94 *Chalodeta chaonitis*  
95 *Charis anius*  
96 *Chimastrum celina*  
97 *Chorinea licursis*  
98 *Cyrenia martia martia*  
99 *Detritivora sp x mitu*  
100 *Emesis fastidiosa*  
101 *Emesis fatimella fatimella*  
102 *Emesis lucinda*  
103 *Eunogyra satyrus*  
104 *Eurybia dardus annulata*  
105 *Eurybia molochina hyacinthina*  
106 *Eurybia nicaeus erythinosa*  
107 *Helicopsis cupido*  
108 *Helicopsis gnidus*  
109 *Hyphilaria parthenis*  
110 *Ithomiola floralis floralis*  
111 *Juditha caucana*  
112 *Lasaia agesilas agesilas*  
113 *Lasaia pseudomeris*  
114 *Leucochimona icare icare*  
115 *Leucochimona matisca*  
116 *Mesophthalma idotea*  
117 *Mesosemia eumene attavus*  
118 *Mesosemia ibycus*  
119 *Mesosemia judicialis*  
120 *Mesosemia machaera dealbata*  
121 *Mesosemia magete*  
122 *Mesosemia minos*  
123 *Mesosemia naiadella*  
124 *Mesosemia olivencia*  
125 *Mesosemia synnephis*  
126 *Nymphidium acheris erymanthus*  
127 *Nymphidium baeotia*  
128 *Nymphidium cachrus*

129 *Nymphidium caricae erubescens*  
130 *Nymphidium leucosia semiramis*  
131 *Nymphidium lisimon lisimon*  
132 *Nymphidium mantus*  
133 *Nymphidium ninias*  
134 *Rhetus periander*  
135 *Sarota acantus*  
136 *Sarota chrysus*  
137 *Sarota gyas*  
138 *Semomesia alyattes alyattes*  
139 *Semomesia capanea*  
140 *Semomesia croesus*  
141 *Stalactis calliope calliope*  
142 *Synargis abaris*  
143 *Synargis calyce marius*  
144 *Synargis ochra*  
145 *Synargis orestessa*  
146 *Synargis paulistina*  
147 *Theope eudocia*  
148 *Thisbe irenea belides*

## Lycaenidae

### Theclinae

149 *Arawacus aetolus*  
150 *Arawacus ellida*  
151 *Arawacus separata*  
152 *Brangas carthaea*  
153 *Calycopis anthora*  
154 *Calycopis lerbela*  
155 *Calycopis malta*  
156 *Calycopis meleager*  
157 *Celmia celmus*  
158 *Exorbaetta metanira*  
159 *Iaspis temesa*  
160 *Ministrymon una una*  
161 *Panthiades aeolus*  
162 *Panthiades bitias*  
163 *Pseudolycaena marsyas*  
164 *Theclopsis lydus*  
165 *Theritas hemon*  
166 *Thestius meridionalis*  
167 *Tmolus cydrara*

## Nymphalidae

### Apaturinae

168 *Doxocopa kallina*

169 *Doxocopa linda linda*

### Biblidinae

170 *Biblis hyperia laticlavata*  
171 *Callicore cynosura fulva*  
172 *Callicore eunomia atahualpa*  
173 *Catonephele acontius acontius*  
174 *Catonephele numilia esite*  
175 *Catonephele numilia numilia*  
176 *Dynamine artemisia artemisia*  
177 *Dynamine erchia*  
178 *Dynamine myrson myrson*  
179 *Dynamine postverta mexicana*  
180 *Eunica alpais alpais*  
181 *Eunica amelia amelia*  
182 *Eunica anna*  
183 *Eunica clytia*  
184 *Eunica concordia*  
185 *Eunica eurota dolores*  
186 *Eunica malvina malvina*  
187 *Eunica marsolia fasula*  
188 *Eunica mygdonia mygdonia*  
189 *Eunica orphise*

190 *Eunica sophonisba agele*  
191 *Eunica viola*

192 *Eunica volumna celma*  
193 *Hamadryas amphinome amphinome*  
194 *Hamadryas arinome arinome*  
195 *Nessaea obrinus obrinus*  
196 *Pyrrhogyra amphiro amphiro*  
197 *Pyrrhogyra crameri nautaca*  
198 *Pyrrhogyra crameri undine*  
199 *Temenis laothoe laothoe*  
200 *Temenis pulchra pulchra*

### Charaxinae

201 *Agrias amydon amydonius*  
202 *Agrias claudina sardanapalus*  
203 *Archaeoprepona amphimachus amphimachus*  
204 *Archaeoprepona demophon demophon*  
205 *Archaeoprepona demophon demophon*  
206 *Archaeoprepona meander meander*  
207 *Fountainea ryphea ryphea*  
208 *Hypna clytemnestra negra*  
209 *Memphis glauce glauce*  
210 *Memphis leonida leonida*  
211 *Memphis moruus moruus*  
212 *Memphis phantes vicinia*

213 *Memphis philumena philumena*  
214 *Memphis polycarmes*  
215 *Prepona dexamenes dexamenes*  
216 *Prepona laertes demodice*  
217 *Prepona pheridamas*  
218 *Zaretis itys itys*

#### Cyrestinae

219 *Marpesia berania berania*  
220 *Marpesia chiron marius*  
221 *Marpesia crethon*  
222 *Marpesia egina*  
223 *Marpesia orsilochus*  
224 *Marpesia petreus petreus*  
225 *Marpesia themistocles norica*

#### Danainae

226 *Aeria eurimedia eurimedia*  
227 *Brevioleria aelia yawara*  
228 *Ceratinia neso hamlini*  
229 *Forbestra equicola equicola*  
230 *Forbestra proceris*  
231 *Hypoleria sarepta sarepta*  
232 *Hyposcada anchiala abidula*  
233 *Hypothiris illinissa roberto*  
234 *Hypothyris euclea intermedia*  
235 *Hypothyris ninonia completomaculata*  
236 *Lycorea halia halia*  
237 *Mechanitis polymnia apicenotata*  
238 *Melinaea ludovica ludovica*  
239 *Melinaea marsaeus rileyi*  
240 *Melinaea mneme mneme*  
241 *Napeogenes inachia pozziana*  
242 *Napeogenes rhezia cyrianassa*  
243 *Napeogenes sylphis corena*  
244 *Pseudoscada florula aureola*  
245 *Sais browni browni*  
246 *Sais rosalia schazi*  
247 *Scada zibia batesi*

#### Heliconiinae

248 *Dione juno juno*  
249 *Dryas iulia alcionea*  
250 *Dryas iulia iulia*  
251 *Eueides lybia lybia*  
252 *Eueides tales barcellinus*  
253 *Heliconius burneyi anjae*  
254 *Heliconius egeria homogena*  
255 *Heliconius elevatus zoelleri*

256 *Heliconius erato reductimacula*  
257 *Heliconius ethilla penthesilea*  
258 *Heliconius hecale latus*  
259 *Heliconius hecale ennius*  
260 *Heliconius leucadia leucadia*  
261 *Heliconius melpomene vicina*  
262 *Heliconius numata silvana*  
263 *Heliconius numata superioris*  
264 *Heliconius sara sara*  
265 *Heliconius xanthocles similatus*  
266 *Laparus doris doris*  
267 *Neruda aoede lucretius*  
268 *Neruda aoede bartletti*  
269 *Neruda metharme perseis*  
270 *Philaethria dido dido*

#### Limnitiidinae

271 *Adelpha capucinus capucinus*  
272 *Adelpha cocala cocala*  
273 *Adelpha cytherea aea*  
274 *Adelpha cytherea olbia*  
275 *Adelpha erotia erotia*  
276 *Adelpha mesentina*  
277 *Adelpha naxia naxia*  
278 *Adelpha thesprotia*  
279 *Adelpha viola pseudococala*

#### Nymphalinae

280 *Anartia jatrophae jatrophae*  
281 *Baeotus beotus*  
282 *Baeotus deucalion*  
283 *Baeotus japetus*  
284 *Castilia ofella*  
285 *Colobura dirce dirce*  
286 *Eresia eunice eunice*  
287 *Eresia perna aveyrana*  
288 *Historis acheronta acheronta*  
289 *Historis odius dious*  
290 *Hypanartia lethe lethe*  
291 *Junonia evarete*  
292 *Siproeta stelenes meridionalis*  
293 *Tigridia acesta fulvescens*

#### Satyrinae

294 *Antirrhoe hela*  
295 *Antirrhoe philaretus philaretus*  
296 *Antirrhoe philoctetes philaretus*  
297 *Bia actorion*  
298 *Brassolis sophorae luridus*

299 *Caligo eurilochus eurilochus*  
300 *Caligo Idomeneus rhoetus*  
301 *Caligo placidianus*  
302 *Caligo teucer obidonus*  
303 *Catoblepia berecynthia unditaenia*  
304 *Catoblepia soranus soranus*  
305 *Chloreuptychia agatha*  
306 *Chloreuptychia arnaca*  
307 *Chloreuptychia callichloris*  
308 *Chloreuptychia hewitsonii*  
309 *Cissia terrestris*  
310 *Cithaerias andromeda*  
311 *Cithaerias pireta pireta*  
312 *Cithaerias pireta aurorina*  
313 *Cithaerias pyritosa*  
314 *Erichthodes antonina*  
315 *Euptychia mollina*  
316 *Euptychia picea*  
317 *Euptychia westwoodi*  
318 *Euryphanis automedon amphimedon*  
319 *Haetera piera negra*  
320 *Hermeuptychia hermes*  
321 *Magneuptychia fugitiva*  
322 *Magneuptychia gera gera*  
323 *Magneuptychia libye*  
324 *Magneuptychia metagera*  
325 *Magneuptychia ocnus*  
326 *Magneuptychia ocypete*  
327 *Magneuptychia tricolor*  
328 *Megeuptychia antonoe*  
329 *Morpho achilles phokylides*  
330 *Morpho cisseis phanodemus*  
331 *Morpho deidamia deidamia*  
332 *Morpho eugenia uraneis*  
333 *Morpho hecuba polyidos*  
334 *Morpho helenor theodoros*  
335 *Morpho marcus intermedia*  
336 *Morpho menelaus offenbachi*  
337 *Morpho rhetenor rhetenor*  
338 *Morpho telemachus foucheri*  
339 *Ooptera aorsa aorsa*  
340 *Opsiphanes invirae pseudophilus*  
341 *Opsiphanes quiteria meridionalis*  
342 *Opsiphanes sp x mitu*  
343 *Pareuptychia hesionides*  
344 *Pareuptychia ocirrhoe interjecta*



*Mariposas de Municipio de Mitú*

---

- 345 *Pierella astyoche astyoche*
  - 346 *Pierella astyoche bernhardina*
  - 347 *Pierella hortona hortona*
  - 348 *Pierella lamia lamia*
  - 349 *Pierella lamia chalybaea*
  - 350 *Pierella lena brasiliensis*
  - 351 *Taygetis mermeria*
  - 352 *Taygetis thamyra*
- 



---

infEspecies por localidad listado TXT - feb21 2016