

Catálogo de mariposas  
Santuario de Fauna y Flora  
**Otún Quimbaya**  
Pereira, Risaralda



BB

Kim Garwood & Juan Guillermo Jaramillo V.



# Convenciones



La taxonomía y la secuencia de este catálogo está basado en el Atlas of Neotropical lepidoptera, listado de chequeo parte 4A por Gerardo Lamas, 2004 y en [www.butterfliesofamerica.com](http://www.butterfliesofamerica.com)

La mayoría de fotos fueron tomadas a mariposas vivas en su ambiente natural. Las fotos de especímenes son usadas para mostrar algunas características que no son posibles fotografiar en la naturaleza o para mostrar especies de las cuales aún no tenemos ejemplares vivos, en ese caso ponemos una foto de esta especie tomada en otro país neotropical, indicando en la foto el país donde fue registrada con una abreviación de dos letras. Esta abreviación corresponde al código internacional usado como terminación en internet del código de cada país, ej. Brasil BR, Ecuador EC, Perú PE etc. Las especies fotografiadas en Colombia no tienen el código de país.

Debajo de la foto están el nombre científico y el rango de distribución de la especie con abreviación del nombre de los países de norte a sur, en algunos casos de con especies que están en Estados Unidos y México usamos el código de los estados más al sur donde están las especies TX Texas, CHI Chiapas.

Las fotos serán reemplazadas una vez se tome la foto de estas especies en Colombia, toda colaboración que permita completar el catalogo será bienvenida y el fotógrafo tendrá los créditos.

Nombres científicos con sp y el nombre de una localidad, tienen identificación desconocida, con duda o son especies sin describir por la ciencia, por favor si Usted puede ayudar a completar o corregir escribanos a los contactos.

## Advertencia

Este catálogo hace parte del Catálogo de mariposas de Colombia, es una versión preliminar en proceso de construcción y revisión, generado desde una base de datos, puede tener errores de taxonomía, de autores, de fotógrafos, de ortografía, de distribución geográfica y de códigos o duplicados que deben ser corregidos.

Al ser en un medio electrónico las correcciones son fáciles de hacer, no implican desperdicio de papel y se puede actualizar permanentemente.

Son bienvenidas todas las críticas, sugerencias y correcciones para mejorarlo y corregirlo.

Si desea colaborar tenemos una metodología para hacerlo por favor llame a Juan Guillermo Jaramillo V. al celular 57-3108306732 o escriba al correo [arcas1956@gmail.com](mailto:arcas1956@gmail.com) o a Kim Garwood [kimgwrw@sbcglobal.net](mailto:kimgwrw@sbcglobal.net) o [www.neotropicalbutterflies.com](http://www.neotropicalbutterflies.com)

Todos los errores son responsabilidad de Juan Guillermo Jaramillo V. y Kim Garwood.



# Conventions



Taxonomy and sequence of this catalog is based on the Atlas of Neotropical Lepidoptera, check list of Part 4A by Gerardo Lamas, 2004 and [www.butterfliesofamerica.com](http://www.butterfliesofamerica.com)

Most photos were taken of live butterflies in their natural environment. The photos of specimens are used to display some features that are not possible to photograph in nature. In some cases we have used photos taken in another neotropical country, and in these photos the other country is shown by a two letter abbreviation. This abbreviation corresponds to the international code used as internet country code, eg BR Brazil. The species photographed in Colombia do not have the country code.

Photos will be replaced once the picture is taken of these species in Colombia, any collaboration or contribution of photos that adds to the catalog will be welcome and all photographers will be credited.

Scientific names with the letters sp and the name of a town are used for unknown or unsure id's. If you can help with id's or corrections, please contact the authors.

## Warning

This catalog is part of the checklist of Colombian butterflies, it is a work in progress and is not complete. It is a preliminary version under construction and review, generated from a database. It may contains errors in taxonomy, author, photographers, spelling, geographical distribution and codes or duplicates that must be corrected.

Being an electronic medium, corrections are easy to make. There is nothing printed, and information and id's can be easily updated.

We welcome all criticisms, suggestions, and corrections to improve and correct this work.

If you want to help with this work, please contact Juan Guillermo Jaramillo at cellular 57-3108306732, email [arcas1956@gmail.com](mailto:arcas1956@gmail.com), or Kim Garwood, email [kimgpwd@sbcglobal.net](mailto:kimgpwd@sbcglobal.net) or [www.neotropicalbutterflies.com](http://www.neotropicalbutterflies.com), to learn about our methodology.

All errors are the responsibility of Juan Guillermo Jaramillo V. and Kim Garwood.



## Familias y subfamilias de mariposas

Las mariposas se clasifican en seis familias que agrupan especies con características comunes.

### Hesperiidae

Esta familia de mariposas primitivas tiene como característica las antenas con ganchito en la parte final. Tienen cabeza y cuerpo grueso y muchas tienen colores oscuros o cafés. 4 subfamilias.



**Eudaminae**  
Spreadwing skippers



**Pyrginae**  
Spreadwing skippers



**Pyrginae**  
Firetips



**Heteropterinae**  
Skipperlings



**Hesperiinae**  
Grass Skippers

## Butterfly families and subfamilies

The butterflies are classified into six families comprising species with common characteristics.

### Skippers

Mostly small with stout bodies, fast fliers, skipping or zipping flight. Many are brown or dark, drab colors. A large family, about 30% of all butterflies. Eudaminae and Pyrginae sit with wings spread open, Heteropterinae often sit with wings closed, Hesperiinae often sit in jet plane position. 4 subfamilies.

### Papilionidae

Mariposas grandes, muchas con colas. Vuelan con fortaleza y les gusta posarse en pantanos o zonas húmedas moviendo constantemente las alas. La mayoría son negras con rayas amarillas o negras con parches rojos en las alas posteriores. Las antenas tienen la parte final engrosada y curvada.



**Papilioninae**



**Swallowtails**



### Swallowtails

Mostly large butterflies, many with tails. Strong fliers, they like to mudpuddle on wet dirt with constantly moving, quivering wings. They are mostly black with yellow stripes or black with red patches on the hindwings (Parides). The antenna is bulky and curved at the end.

### Pieridae

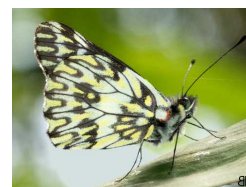
La mayoría de píerides son amarillas, blancas o naranja, aunque hay algunas negras. Las píerides visitan flores y son comunes en jardines, pero las dismorphias prefieren los bosques sombreados. Tienen 3 subfamilias.



**Dismorphiinae**  
Mimic-Whites



**Pierinae**



**Whites**



**Coliadinae**



**Sulphurs**

### Whites and sulphurs

Mostly white, yellow or orange, but some are black. Whites and Sulphurs like flowers and are often in gardens, but Dismorphiinae like the shaded forest. They have 3 subfamilies.



## Riodinidae

La mayoría de riodínidos se encuentran en tierras bajas, es una familia con mucha variedad. Muchas tienen manchas metálicas y se posan por debajo de las hojas. Algunas tienen colas. Tienen dos subfamilias.

## Metalmarks

More species are found in the lowlands. This is the most varied family; they can come in many shapes, sizes and colors. Some have tails, many do not. Some genera sit with wings closed, some with wings open. They pose under the leaves. They have 2 subfamilies.



Euselasiinae Metalmarks



Riodiniinae



Metalmarks



## Lycaenidae

En general los licénidos son mariposas pequeñas, muchas tienen colas pequeñas para distraer a los predadores. Son difíciles de ver pues muchas viven en el docel. A menudo son azules al abrir las alas. Tienen 2 subfamilias.

## Hairstreaks and blues

Hairstreaks often have tails, but not always. This is the least common of the 6 families, often in the canopy and hard to see. Small butterflies, often brilliant blue above. They have 2 subfamilies.



Polyommata Blues



Theclinae



Hairstreaks

## Nymphalidae

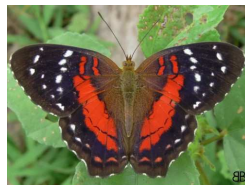
Las nifáidos solo tienen 4 patas visibles, las otras 2 están acortadas y cerca a la cabeza como escobas. Es la familia más abundante y representa 40% del total. Tiene 10 subfamilias.

## Brushfoots

Only show 4 walking legs, the front 2 legs are held up close to the head, like brushes. This is the largest family, about 40%, many subfamilies.



Heliconiinae  
Longwings



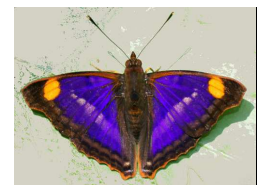
Nymphalinae  
Brushfoots Crescents



Limenitidinae  
Sisters



Charaxinae  
Leafwings



Apaturinae  
Emperors



Satyrinae  
Satyrs, Morphos



Danainae  
Clearwings



Danainae  
Monarchs



Cyrestinae  
Daggerwings



Biblidinae  
Tropicals



## Hesperiidae

### Skippers

#### Eudaminae

#### Spreadwing Skippers

Se posan con las alas abiertas, muchas tienen colas y puntos o rayas en las alas delanteras.

Sit with wings open, many have tails and spots or stripes on the forewing.



*Astraptus anaphus annetta* TX-PE



*Astraptus anaphus annetta* TX-PE



*Astraptus anaphus annetta* TX-PE



*Astraptus anaphus annetta* TX-PE



*Astraptus anaphus annetta* TX-PE



*Astraptus anaphus annetta* TX-PE



*Astraptus chiriquensis chiriquensis* MX-EC



*Astraptus chiriquensis chiriquensis* MX-EC



*Astraptus chiriquensis chiriquensis* MX-EC





*Astraptes chiriquensis chiriquensis* MX-EC



*Astraptes chiriquensis chiriquensis* MX-EC



*Astraptes chiriquensis chiriquensis* MX-EC



*Astraptes chiriquensis chiriquensis* MX-EC



*Astraptes fulgerator* Tx-AR



*Astraptes fulgerator* Tx-AR



*Astraptes fulgerator* Tx-AR



*Astraptes fulgerator* Tx-AR



*Astraptes fulgerator* Tx-AR



*Astraptes fulgerator* Tx-AR



*Astraptes fulgerator* Tx-AR



*Astraptes fulgerator* Tx-AR





*Astraptes galesus cassius* CR-VZ



*Astraptes galesus cassius* CR-VZ



*Astraptes galesus cassius* CR-VZ



*Astraptes galesus cassius* CR-VZ



*Astraptes galesus cassius* CR-VZ



*Astraptes talus* MX-AR



*Astraptes talus* MX-AR



*Astraptes talus* MX-AR



*Astraptes talus* MX-AR



*Astraptes talus* MX-AR



*Astraptes talus* MX-AR



*Astraptes talus* MX-AR





*Astraptes talus* MX-AR



*Autochton neis* MX-PG



*Autochton neis* MX-PG



*Autochton neis* MX-PG



*Autochton neis* MX-PG



*Autochton zarex* MX-AR



*Autochton zarex* MX-AR



*Autochton zarex* MX-AR



*Autochton zarex* MX-AR



*Autochton zarex* MX-AR



*Epargyreus exadeus cruza* MX-SU



*Epargyreus exadeus cruza* MX-SU





*Epargyreus exadeus cruza* MX-SU



*Epargyreus exadeus cruza* MX-SU



*Epargyreus exadeus cruza* MX-SU



*Epargyreus exadeus cruza* MX-SU



*Epargyreus exadeus cruza* MX-SU



*Epargyreus exadeus cruza* MX-SU



*Epargyreus spina spina* MX-BR



*Epargyreus spina spina* MX-BR



*Phanus grandis* NI-VZ



*Phanus grandis* NI-VZ



*Phanus grandis* NI-VZ



*Phanus grandis* NI-VZ





*Phocides johnsoni* CO



*Phocides johnsoni* CO



*Phocides perillus* CO



*Phocides perillus* CO



*Ridens harpagus* CO



*Ridens harpagus* CO



*Ridens harpagus* CO



*Urbanus proteus proteus* US-AR



*Urbanus proteus proteus* US-AR



*Urbanus simplicius* Tx-AR



*Urbanus simplicius* Tx-AR



*Urbanus simplicius* Tx-AR





*Urbanus simplicius* Tx-AR



*Urbanus simplicius* Tx-AR



*Urbanus sp blue otun*



*Urbanus sp blue otun*



*Urbanus tanna* Tx-GU



*Urbanus tanna* Tx-GU



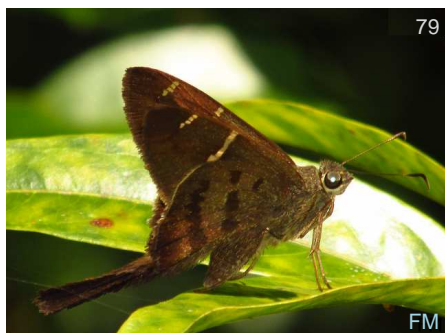
*Urbanus tanna* Tx-GU



*Urbanus tanna* Tx-GU



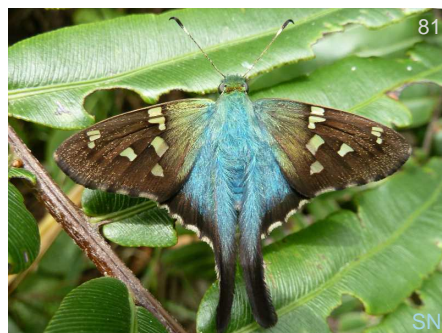
*Urbanus teleus* Tx-AR



*Urbanus teleus* Tx-AR



*Urbanus teleus* Tx-AR



*Urbanus viterboana* MX-EC





*Urbanus viterboana* MX-EC DvG



*Urbanus viterboana* MX-EC DvG



*Urbanus viterboana* MX-EC KG



*Urbanus viterboana* MX-EC KWs



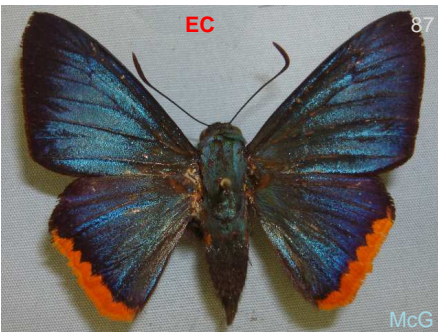
*Urbanus viterboana* MX-EC DvG

## Pyrginae

### Spreadwing Skippers

Se posan con las alas abiertas, en la tribu Pyrrhopigine muchos tienen punta roja en el abdomen.

Tribe Pyrrhopygini/Golf-club Skippers or Firetips – sit with wings open, some have red tips to abdomen. Tip of antennae bent over at 90 degree angle, like a golf club. Powerful fliers, strong bodies and wings, can buzz you. Some very colorful. Other spr



*Chalpyge zereda rufipectus* CO EC McG



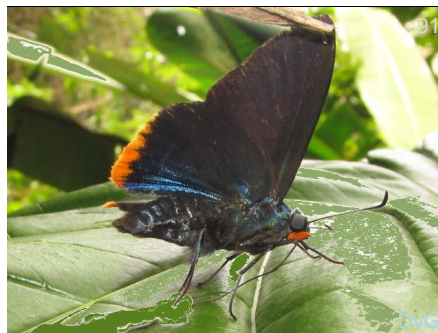
*Chalpyge zereda rufipectus* CO EC DvG



*Chalpyge zereda rufipectus* CO EC Leo



*Chalpyge zereda rufipectus* CO EC McG



*Chalpyge zereda rufipectus* CO EC DvG



*Mimoniades nurscia nurscia* CO-PE





*Mimoniades nurscia nurscia* CO-PE



*Pyrrhopyge aziza aziza* CO



*Pyrrhopyge aziza aziza* CO



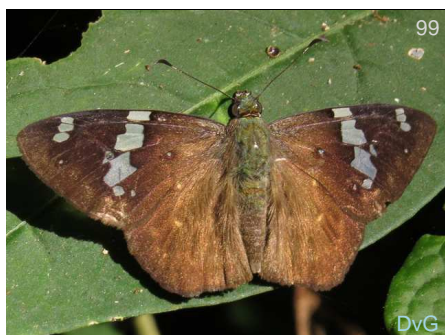
*Pyrrhopyge aziza aziza* CO



*Yanguna spatiosa spatiosa* N CO-EC



*Celaenorrhinus bifurcus* CR-EC



*Celaenorrhinus bifurcus* CR-EC



*Celaenorrhinus bifurcus* CR-EC



*Celaenorrhinus bifurcus* CR-EC



*Bolla giselus tornea* CO



*Bolla giselus tornea* CO



*Cyclosemia anastomosis* MX-EC





*Cyclosemia anastomosis* MX-EC



*Cyclosemia anastomosis* MX-EC



*Cyclosemia anastomosis* MX-EC



*Cyclosemia anastomosis* MX-EC



*Cyclosemia anastomosis* MX-EC



*Noctuana haematospila* VZ-PR



*Noctuana haematospila* VZ-PR



*Noctuana haematospila* VZ-PR



*Noctuana haematospila* VZ-PR



*Noctuana haematospila* VZ-PR



*Noctuana haematospila* VZ-PR



*Ebrietas badia* CR-BO





*Ebrietas badia* CR-BO



*Ebrietas badia* CR-BO



*Ebrietas badia* CR-BO



*Ebrietas badia* CR-BO



*Ebrietas badia* CR-BO



*Ebrietas infanda* CO-BR



*Ebrietas infanda* CO-BR



*Mylon lassia* MX-GU



*Mylon lassia* MX-GU



*Mylon lassia* MX-GU



*Mylon lassia* MX-GU



*Mylon zephus zephus* CO-VZ





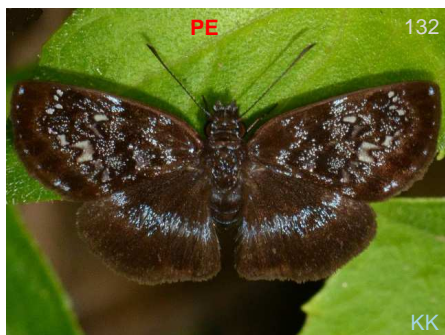
*Mylon zephus zephus* CO-VZ



*Potamanaxas thoria* NI-PE



*Potamanaxas thoria* NI-PE



*Sostrata grippa* CR-BO



*Sostrata grippa* CR-BO



*Sostrata grippa* CR-BO



*Sostrata grippa* CR-BO



*Theagenes albiplaga* CO-BO



*Theagenes albiplaga* CO-BO



*Theagenes albiplaga* CO-BO



*Theagenes albiplaga* CO-BO



*Theagenes albiplaga* CO-BO





141

BB

*Theages albipilaga*

CO-BO



142

BBt

*Achlyodes pallida*

Tx-BO



143

BB

*Achlyodes pallida*

Tx-BO



144

BB

*Achlyodes pallida*

Tx-BO



145

BB

*Achlyodes pallida*

Tx-BO



146

DvG

*Achlyodes pallida*

Tx-BO



147

KG

*Quadrus truncata*

CO-BO



148

DvG

*Quadrus truncata*

CO-BO

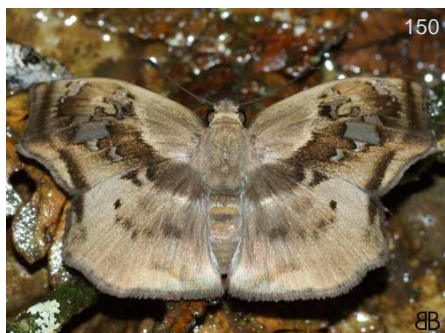


149

BB

*Quadrus truncata*

CO-BO



150

BB

*Quadrus truncata*

CO-BO



151

BB

*Quadrus truncata*

CO-BO



152

KG

*Quadrus truncata*

CO-BO





153

DvG

*Quadrus truncata*

CO-BO



154

DvG

*Quadrus truncata*

CO-BO



155

DvG

*Zera hyacinthinus hyacinthinus*

MX-CO



156

BB

*Zera hyacinthinus hyacinthinus*

MX-CO



157

DvG

*Zera hyacinthinus hyacinthinus*

MX-CO



158

DvG

*Zera hyacinthinus hyacinthinus*

MX-CO



159

DvG

*Zera hyacinthinus hyacinthinus*

MX-CO



160

DvG

*Zera nolckeni*

PN-BO

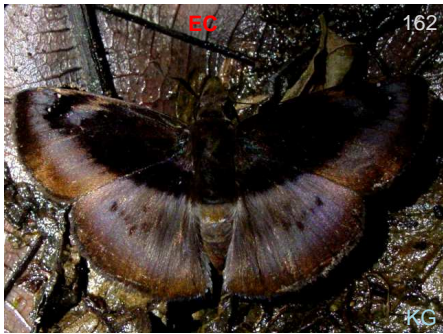


161

DvG

*Zera nolckeni*

PN-BO



162

KG

*Zera nolckeni*

PN-BO



163

DvG

*Zera nolckeni*

PN-BO



164

DvG

*Zera nolckeni*

PN-BO





*Zera zera* CR-BR



*Zera zera* CR-BR



*Zera zera* CR-BR



*Zera zera* CR-BR



*Heliopetes alana* MX-AR



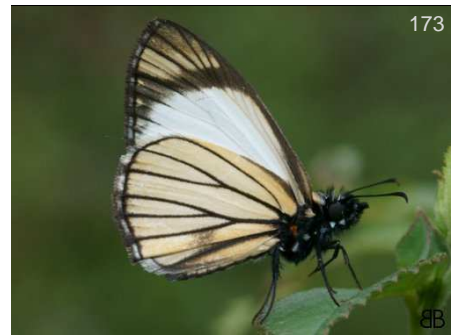
*Heliopetes alana* MX-AR



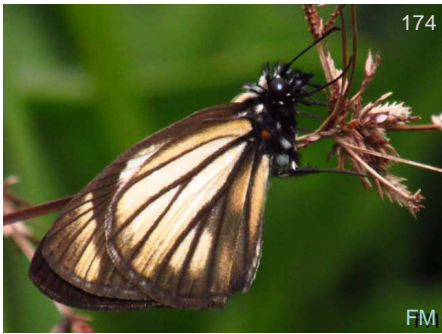
*Heliopetes alana* MX-AR



*Heliopetes alana* MX-AR



*Heliopetes alana* MX-AR



*Heliopetes alana* MX-AR



*Heliopetes laviana laviana* TX-VZ



*Heliopetes laviana laviana* TX-VZ





*Heliopetes laviana laviana* TX-VZ



*Heliopetes laviana laviana* TX-VZ



*Heliopetes laviana laviana* TX-VZ



*Heliopetes laviana laviana* TX-VZ



*Pyrgus orcus* MX-AR



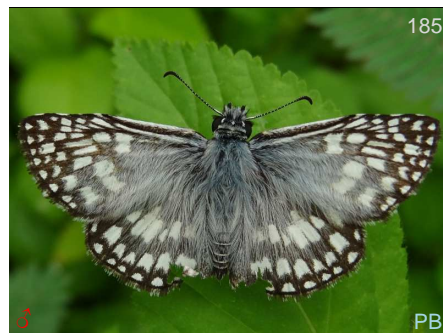
*Pyrgus orcus* MX-AR



*Pyrgus orcus* MX-AR



*Pyrgus orcus* MX-AR



*Pyrgus orcus* MX-AR



*Pyrgus orcus* MX-AR



*Pyrgus orcus* MX-AR



*Pyrgus orcus* MX-AR

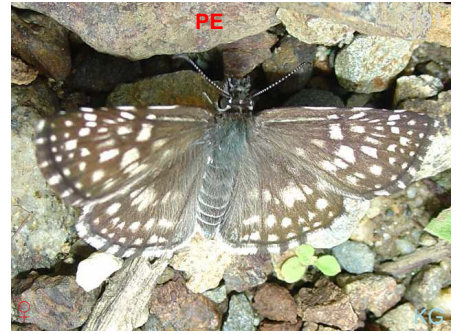




*Pyrgus orcus* MX-AR BB



*Pyrgus orcus* MX-AR KG



*Pyrgus orcus* MX-AR PE



*Pyrgus orcus* MX-AR BB

## Heteropterae

### Skipperlings

The Dallas – most sit with forewings up, like grass skippers. Often have large gold or orange patterns on underside. Found on wet dirt at higher elevations, some very high. Not in the lowlands. Many very confusing species.



*Dalla frater* PN-BO DvG



*Dalla frater* PN-BO DvG



*Dalla frater* PN-BO DvG



*Dalla frater* PN-BO KG



*Dalla frater* PN-BO KG



*Dalla mesoxantha* VZ-BO BB





*Dalla mesoxantha* VZ-BO



*Dalla mesoxantha* VZ-BO



*Dalla mesoxantha* VZ-BO



*Dalla mesoxantha* VZ-BO



*Dalla mesoxantha* VZ-BO



*Dalla mesoxantha* VZ-BO



*Dalla mesoxantha* VZ-BO



*Dalla mesoxantha* VZ-BO



*Dalla mesoxantha* VZ-BO



*Dalla mesoxantha* VZ-BO



*Dalla mesoxantha* VZ-BO



*Dalla mesoxantha* VZ-BO





*Dalla miser* CO-PE



*Dalla miser* CO-PE



*Dalla miser* CO-PE



*Dalla miser* CO-PE



*Dalla miser* CO-PE



*Dalla miser* CO-PE

## Hesperiinae

### Grass Skippers

Sit in 'jet plane' position, with forewings straight up and hindwings out flat. Many are orange and black, or brown. Many can only be separated by genitalic dissection. Small butterflies, some like flowers in gardens, some like shaded forest.



*Alera vulpina* CO-PE



*Alera vulpina* CO-PE



*Perichares adela* TX-BR



*Perichares adela* TX-BR



*Perichares adela* TX-BR



*Perichares adela* TX-BR





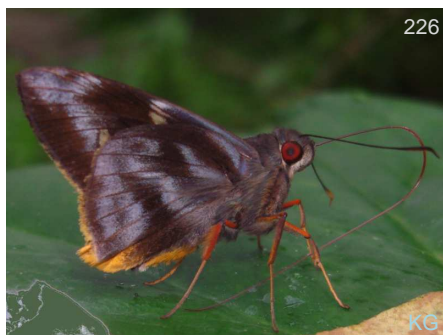
*Perichares adela* TX-BR



*Perichares deceptus drina* ES-BR



*Perichares deceptus drina* ES-BR



*Perichares deceptus drina* ES-BR



*Perichares deceptus drina* ES-BR



*Aroma henricus henricus* CR-PE



*Aroma henricus henricus* CR-PE



*Aroma henricus henricus* CR-PE



*Aroma henricus henricus* CR-PE



*Aroma henricus henricus* CR-PE



*Aroma henricus henricus* CR-PE



*Carystoides sp otun*





235

DvG

*Lychnuchus brasta*

CO?-PE



236

BB

*Sacrator sacrator*

CO



237

KG

*Sacrator sacrator*

CO



238

DvG

*Talides alternata*

MX-BR



239

FH

*Talides alternata*

MX-BR



240

SS

*Talides alternata*

MX-BR



241

DvG

*Talides alternata*

MX-BR



242

BB

*Zenis jebus janka*

PN-CO



243

BB

*Zenis jebus janka*

PN-CO



244

BB

*Zenis jebus janka*

PN-CO



245

BB

*Zenis jebus janka*

PN-CO



246

BB

*Zenis jebus janka*

PN-CO

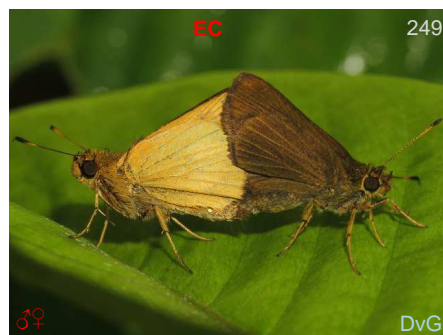




*Zenis jebus janka* PN-CO



*Zenis jebus janka* PN-CO



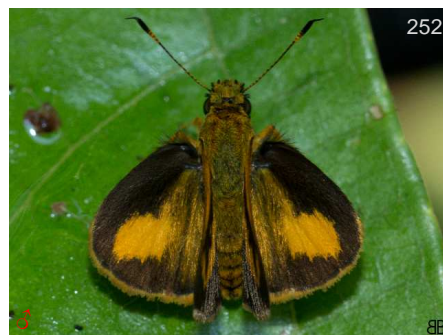
*Anthoptus epictetus* MX-AR



*Anthoptus epictetus* MX-AR



*Anthoptus epictetus* MX-AR



*Anthoptus epictetus* MX-AR



*Anthoptus epictetus* MX-AR



*Anthoptus epictetus* MX-AR



*Anthoptus epictetus* MX-AR



*Anthoptus epictetus* MX-AR



*Anthoptus epictetus* MX-AR



*Anthoptus epictetus* MX-AR





*Anthoptus epictetus* MX-AR



*Anthoptus epictetus* MX-AR



*Anthoptus epictetus* MX-AR



*Anthoptus epictetus* MX-AR



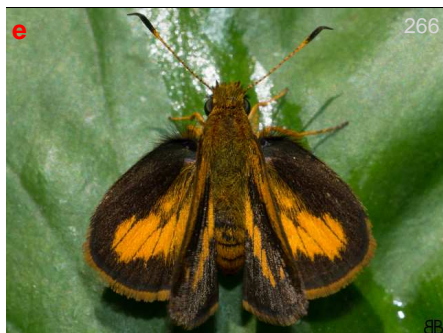
*Anthoptus epictetus* MX-AR



*Corticea mendica schwarzi* CO



*Corticea mendica schwarzi* CO



*Corticea mendica schwarzi* CO



*Corticea mendica schwarzi* CO



*Corticea mendica schwarzi* CO



*Corticea mendica schwarzi* CO



*Corticea mendica schwarzi* CO





*Falga jeconia jeconia* CO-VZ



*Falga jeconia jeconia* CO-VZ



*Falga jeconia jeconia* CO-VZ



*Falga jeconia jeconia* CO-VZ



*Falga jeconia jeconia* CO-VZ



*Wahydra thisbe* CO-EC



*Wahydra thisbe* CO-EC



*Wahydra thisbe* CO-EC



*Wahydra thisbe* CO-EC



*Wahydra thisbe* CO-EC



*Wahydra thisbe* CO-EC



*Apaustus gracilis gracilis* NI-EC





*Dion carmenta acraea* CO



*Dion carmenta acraea* CO



*Dion carmenta acraea* CO



*Lucida lucia scopas* CO-VZ



*Lucida lucia scopas* CO-VZ



*Lucida lucia scopas* CO-VZ



*Lucida lucia scopas* CO-VZ



*Lucida lucia scopas* CO-VZ



*Mnestheus ittona* CR-BO



*Mnestheus ittona* CR-BO



*Niconiades viridis vista* MX-EC



*Niconiades viridis vista* MX-EC





*Niconiades viridis vista* MX-EC



*Niconiades viridis vista* MX-EC



*Vettius coryna coryna* MX-BR



*Vettius coryna coryna* MX-BR



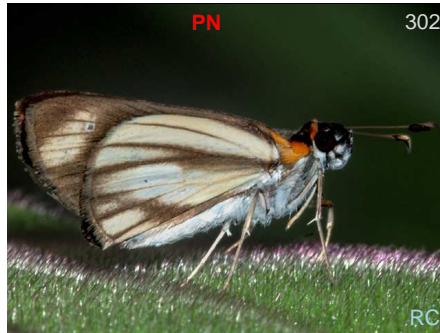
*Vettius coryna coryna* MX-BR



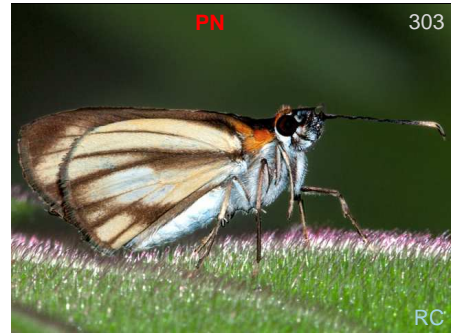
*Vettius diversa maeon* NI-CO



*Vettius diversa maeon* NI-CO



*Vettius diversa maeon* NI-CO



*Vettius diversa maeon* NI-CO



*Vettius diversa maeon* NI-CO



*Vettius diversa maeon* NI-CO



*Vettius drova* CO?EC





*Vettius drova* CO?EC



*Vettius drova* CO?EC



*Vettius drova* CO?EC



*Vettius drova* CO?EC



*Nyctelius nyctelius nyctelius* Tx-AR



*Nyctelius nyctelius nyctelius* Tx-AR



*Nyctelius nyctelius nyctelius* Tx-AR



*Nyctelius nyctelius nyctelius* Tx-AR



*Nyctelius nyctelius nyctelius* Tx-AR



*Nyctelius nyctelius nyctelius* Tx-AR



*Nyctelius nyctelius nyctelius* Tx-AR



*Nyctelius nyctelius nyctelius* Tx-AR





*Poanes inimica* MX-VZ



*Poanes inimica* MX-VZ



*Poanes inimica* MX-VZ



*Poanes inimica* MX-VZ



*Poanes inimica* MX-VZ



*Poanes inimica* MX-VZ



*Poanes inimica* MX-VZ



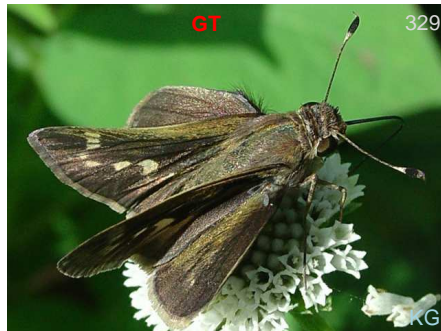
*Poanes inimica* MX-VZ



*Pompeius pompeius* MX-AR



*Pompeius pompeius* MX-AR



*Pompeius pompeius* MX-AR



*Pompeius pompeius* MX-AR





*Pompeius pompeius* MX-AR



*Pompeius pompeius* MX-AR



*Pompeius pompeius* MX-AR



*Quinta cannae* MX-AR



*Quinta cannae* MX-AR



*Quinta cannae* MX-AR



*Racta apella apella* CR-EC



*Racta apella apella* CR-EC



*Racta apella apella* CR-EC



*Thespies pinda* CO-PE



## Papilionidae

### Swallowtails

#### Papilioninae

#### Swallowtails



*Pterourus coroebus syndemis*



*Pterourus coroebus syndemis*



*Pterourus coroebus syndemis*



*Pterourus coroebus syndemis*



*Pterourus coroebus syndemis*



*Pterourus coroebus syndemis*



## Pieridae

### Whites and Sulphurs

#### Dismorphiinae

##### Mimic-Whites

Odd shaped forewings, smaller butterflies, prefer shaded areas. They are pale yellow or white with black marking on the dorsals. Females have rounder forewings. Sit with wings closed.



*Dismorphia altis sophia*



*Dismorphia crisia foedora*



*Dismorphia crisia foedora*



*Dismorphia crisia foedora*



*Dismorphia crisia foedora*



*Dismorphia crisia foedora*



*Dismorphia crisia foedora*



*Dismorphia crisia foedora*



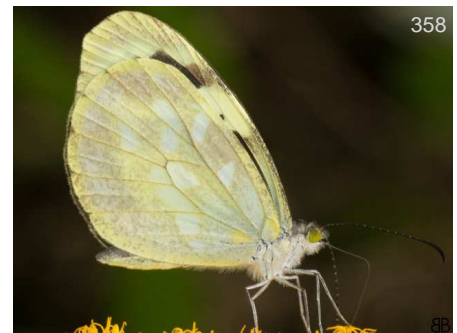
*Dismorphia crisia foedora*



*Dismorphia crisia foedora*



*Dismorphia crisia foedora*



*Dismorphia crisia foedora*





*Dismorphia crisia foedora*



*Dismorphia lewyi dolorita*



*Dismorphia lewyi dolorita*



*Dismorphia lewyi dolorita*



*Dismorphia lewyi dolorita*



*Dismorphia lewyi dolorita*



*Dismorphia lewyi dolorita*



*Dismorphia lua id.ae*



*Dismorphia lua id.ae*



*Dismorphia lua id.ae*



*Dismorphia lua id.ae*



*Dismorphia lua id.ae*





*Dismorphia medora medora*



*Dismorphia medora medora*



*Dismorphia zathoe othoe*



*Dismorphia zathoe othoe*



*Dismorphia zathoe othoe*



*Enantia melite citrinella*



*Enantia melite citrinella*



*Lieinix nemesis nemesis*



*Lieinix nemesis nemesis*



*Lieinix nemesis nemesis*



*Lieinix nemesis nemesis*



*Lieinix nemesis nemesis*

## Pierinae

### Whites

Variable, many are white but some are black with narrow white, yellow or even red patches. Many species of *Catasticta* are very difficult to separate from a live ventral photo. They like to come to wet sand or edges of flowing water. Sit with wings closed





*Catasticta ctemene rubricata*



*Catasticta ctemene rubricata*



*Catasticta ctemene rubricata*



*Catasticta ctemene rubricata*



*Catasticta notha caucana*



*Catasticta notha caucana*



*Catasticta notha caucana*



*Catasticta notha caucana*



*Catasticta prioneris albescens*



*Catasticta prioneris albescens*



*Catasticta prioneris albescens*



*Catasticta prioneris albescens*





*Catasticta prioneris albescens*



*Catasticta seitzi seitzi*



*Catasticta seitzi seitzi*



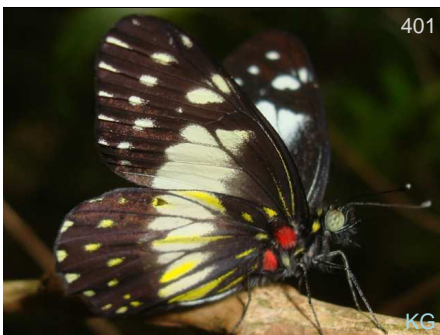
*Catasticta sisamnus sisamnus*



*Catasticta sisamnus sisamnus*



*Catasticta sisamnus sisamnus*



*Catasticta sisamnus sisamnus*



*Catasticta sisamnus sisamnus*



*Hesperocharis marchalii*



*Hesperocharis marchalii*



*Hesperocharis marchalii*



*Hesperocharis marchalii*





*Leodonta dysoni*



*Leodonta dysoni*



*Leodonta tellane intermedia*



*Leodonta tellane intermedia*



*Leodonta tellane intermedia*



*Leodonta tellane intermedia*



*Leodonta tellane intermedia*



*Leodonta tellane intermedia*



*Leodonta tellane intermedia*



*Leptophobia aripa aripa*



*Leptophobia aripa aripa*



*Leptophobia aripa aripa*





*Leptophobia aripa aripa*



*Leptophobia caesia phanokia*



*Leptophobia caesia phanokia*



*Leptophobia caesia phanokia*



*Leptophobia caesia phanokia*



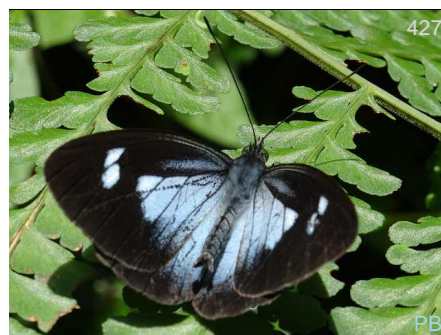
*Leptophobia caesia phanokia*



*Leptophobia caesia phanokia*



*Leptophobia caesia phanokia*



*Leptophobia caesia phanokia*



*Leptophobia caesia phanokia*



*Leptophobia helena helena*



*Leptophobia helena helena*





*Leptophobia helena helena*



*Leptophobia helena helena*



*Leptophobia helena helena*



*Leptophobia helena helena*



*Leptophobia helena helena*



*Leptophobia penthica penthica*



*Leptophobia penthica penthica*



*Leptophobia penthica penthica*



*Leptophobia penthica penthica*



*Leptophobia penthica penthica*



*Leptophobia tovaria pseudolympia*



*Leptophobia tovaria pseudolympia*





*Leptophobia tovaria pseudolympia*



*Leptophobia tovaria pseudolympia*



*Leptophobia tovaria pseudolympia*

## Coliadae

### Sulphurs

Some large, but most are medium to smaller sizes. Common in meadows and gardens, roadside edges. Difficult to separate to species just on ventral live photos, you often need to see the pattern of the black on the edges of the upper wings. Sit with wings c



*Colias dimera*



*Colias dimera*



*Colias dimera*



*Colias dimera*



*Colias dimera*



*Colias dimera*



*Colias dimera*



*Colias dimera*



*Colias dimera*





*Eurema albula albula*



*Eurema arbela gratiosa*



*Eurema arbela gratiosa*



*Eurema arbela gratiosa*



*Eurema arbela gratiosa*



*Eurema arbela gratiosa*



*Eurema arbela gratiosa*



*Eurema arbela gratiosa*



*Eurema arbela gratiosa*



*Eurema arbela gratiosa*



*Eurema salome salome*



*Eurema salome salome*





*Eurema salome salome*



*Eurema salome salome*



*Eurema salome salome*



*Eurema salome salome*



*Eurema salome salome*



*Eurema xantochlora xantochlora*



*Eurema xantochlora xantochlora*



*Eurema xantochlora xantochlora*



*Eurema xantochlora xantochlora*



*Eurema xantochlora xantochlora*



*Eurema xantochlora xantochlora*

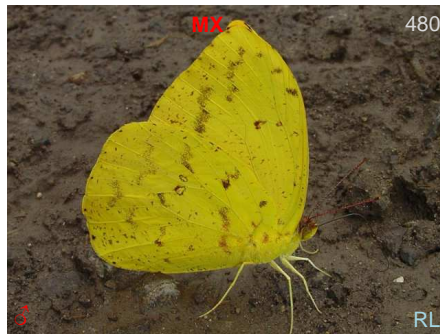


*Eurema xantochlora xantochlora*





*Phoebis argante argante*



*Phoebis argante argante*



*Phoebis argante argante*



*Phoebis argante argante*



*Phoebis argante argante*



*Phoebis argante argante*



*Phoebis argante argante*



*Phoebis neocypris rurina*



*Phoebis neocypris rurina*



*Phoebis neocypris rurina*



*Phoebis philea philea*



*Phoebis philea philea*





*Phoebis philea philea*



*Phoebis philea philea*



*Phoebis philea philea*



*Phoebis philea philea*



*Phoebis philea philea*



## Riodinidae

### Metalmarks

#### Riodininae

#### Metalmarks



*Leucochimona icare*



*Leucochimona icare*



*Leucochimona icare*



*Leucochimona icare*



*Leucochimona icare*



*Mesosemia metuana metuana*

CO-EC



*Mesosemia metuana metuana*

CO-EC



*Mesosemia metuana metuana*

CO-EC



*Mesosemia metuana metuana*

CO-EC



*Mesosemia metuana metuana*

CO-EC



*Mesosemia metuana metuana*

CO-EC



*Mesosemia metuana metuana*

CO-EC





*Mesosemia metuana metuana* CO-EC BB



*Mesosemia mevania mevania* CO



*Mesosemia mevania mevania* CO BB



*Mesosemia mevania mevania* CO BB



*Mesosemia mevania mevania* CO DvG



*Mesosemia mevania mevania* CO BB



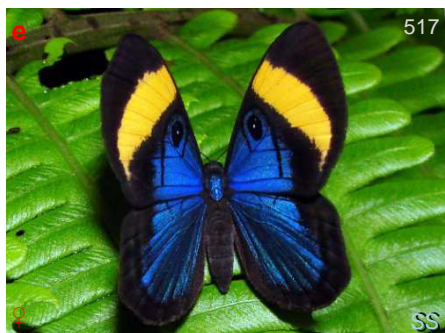
*Mesosemia pacifica* CO KG



*Mesosemia pacifica* CO KG



*Mesosemia pacifica* CO DvG



*Mesosemia pacifica* CO SS



*Mesosemia pacifica* CO GM



*Mesosemia pacifica* CO DvG





*Mesosemia pacifica* CO



*Mesosemia pacifica* CO



*Mesosemia pacifica* CO



*Mesosemia pacifica* CO



*Mesosemia pacifica* CO



*Baeotis sulphurea macularia*



*Baeotis sulphurea macularia*



*Baeotis sulphurea macularia*



*Necyria bellona incendiaria*



*Necyria bellona incendiaria*



*Necyria bellona incendiaria*



*Necyria bellona incendiaria*





*Necyria bellona incendiaria*



*Rhetus dysonii caligosus*



*Rhetus dysonii caligosus*



*Rhetus dysonii caligosus*



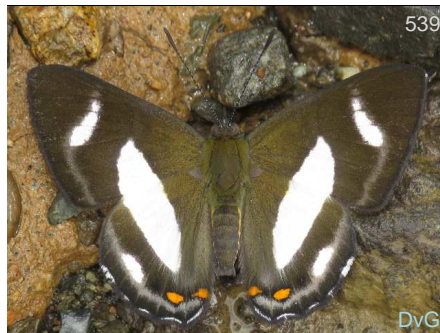
*Rhetus dysonii caligosus*



*Rhetus dysonii caligosus*



*Rhetus dysonii caligosus*



*Siseme alectryio alectryio*



*Siseme alectryio alectryio*



*Siseme alectryio alectryio*



*Siseme aristoteles sprucei*



*Siseme aristoteles sprucei*





*Siseme aristoteles sprucei*



*Siseme pallas pallas*



*Siseme pallas pallas*



*Sarota myrtea*



*Sarota myrtea*



*Sarota myrtea*



*Emesis cypria guppyi*



*Emesis cypria guppyi*



*Emesis cypria guppyi*



*Emesis cypria guppyi*



*Emesis cypria guppyi*



*Emesis cypria guppyi*





*Emesis cypria guppyi*



*Emesis mandana mandana* CR-BR



*Emesis mandana mandana* CR-BR



*Emesis mandana mandana* CR-BR



*Emesis mandana mandana* CR-BR



*Emesis mandana mandana* CR-BR



*Emesis mandana mandana* CR-BR



*Emesis mandana mandana* CR-BR



*Emesis mandana mandana* CR-BR



*Emesis tenedia* MX-BR



*Emesis tenedia* MX-BR



# Lycaenidae

## Blues and Hairstreaks

### Theclinae

#### Hairstreaks



*Arawacus leucogyna*

BBt

BL-VZ



*Arawacus leucogyna*

BB

BL-VZ



*Arawacus leucogyna*

BB

BL-VZ



*Arawacus leucogyna*

Leo

BL-VZ



*Arawacus leucogyna*

BB

BL-VZ



*Arawacus leucogyna*

BB

BL-VZ



*Cyanophrys acaste*

KG

CO-BR



*Johnsonita auda*

BB

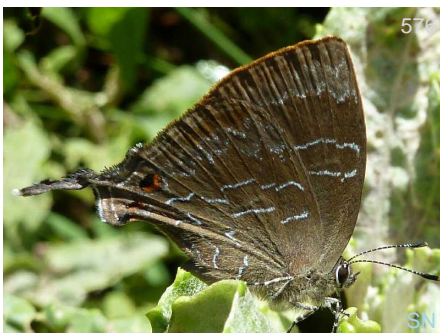
PN-PE



*Johnsonita auda*

BB

PN-PE



*Johnsonita auda*

SN

PN-PE



*Johnsonita auda*

BB

PN-PE



*Johnsonita auda*

BB

PN-PE





*Johnsonita auda* PN-PE



*Micandra comae* CO-PE



*Micandra comae* CO-PE



*Micandra comae* CO-PE



*Micandra comae* CO-PE



*Ocaria ocrisia* MX-AR



*Ocaria ocrisia* MX-AR



*Ocaria ocrisia* MX-AR



*Ocaria ocrisia* MX-AR



*Ocaria ocrisia* MX-AR



*Ocaria ocrisia* MX-AR



*Ocaria ocrisia* MX-AR





*Salazaria sala* CO



*Salazaria sala* CO



*Strephonota tephraeus* TX-BR



*Strephonota tephraeus* TX-BR



*Strephonota tephraeus* TX-BR



*Theritas augustinula* -PN,CO?

Polyommatainae

Blues



*Cupido comyntas texana* TX-EC



*Cupido comyntas texana* TX-EC



*Cupido comyntas texana* TX-EC



*Cupido comyntas texana* TX-EC



*Cupido comyntas texana* TX-EC



*Cupido comyntas texana* TX-EC





*Zizula cyna* US-PE?



*Zizula cyna* US-PE?



*Zizula cyna* US-PE?



*Zizula cyna* US-PE?



# Nymphalidae

## Brushfoots

### Heliconiinae

#### Longwings



*Actinote pellenea perfulva* CO



*Actinote pellenea perfulva* CO



*Altinote neleus neleus* SoAm



*Altinote neleus neleus* SoAm



*Altinote neleus neleus* SoAm



*Altinote neleus neleus* SoAm



*Altinote neleus neleus* SoAm



*Altinote neleus neleus* SoAm



*Altinote ozoneme ozomene* SoAm



*Altinote ozoneme ozomene* SoAm



*Altinote ozoneme ozomene* SoAm



*Altinote ozoneme ozomene* SoAm





*Altinote ozoneme ozomene* SoAm



*Altinote ozoneme ozomene* SoAm



*Altinote ozoneme ozomene* SoAm



*Altinote ozoneme ozomene* SoAm



*Altinote ozoneme ozomene* SoAm



*Altinote stratonice stratonice* CO-EC



*Altinote stratonice stratonice* CO-EC



*Altinote stratonice stratonice* CO-EC



*Altinote stratonice stratonice* CO-EC



*Altinote stratonice stratonice* CO-EC



*Altinote stratonice stratonice* CO-EC



*Dione glycera* VZ-PE





*Dione glycera* VZ-PE



*Dione glycera* VZ-PE



*Dione glycera* VZ-PE



*Dione juno juno* NE SoAm



*Dione juno juno* NE SoAm



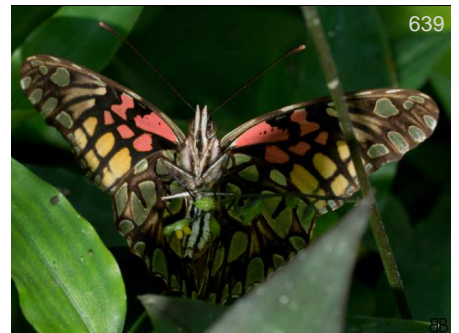
*Dione juno juno* NE SoAm



*Dione moneta* MX-CO



*Dione moneta* MX-CO



*Dione moneta* MX-CO



*Dione moneta* MX-CO



*Eueides procula edias*



*Eueides procula edias*





*Heliconius clysonymus clysonymus*



*Heliconius clysonymus clysonymus*



*Heliconius clysonymus clysonymus*



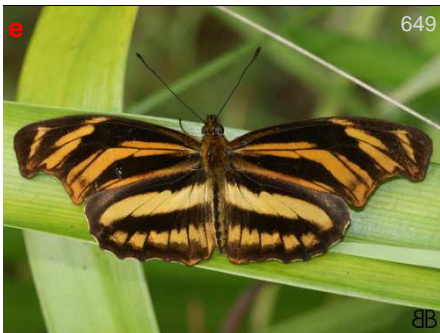
*Heliconius clysonymus clysonymus*



*Heliconius clysonymus clysonymus*



*Podotricha judith caucana*



*Podotricha judith caucana*



*Podotricha judith caucana*



*Podotricha judith caucana*

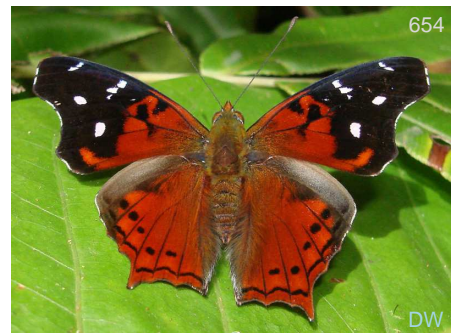
Nymphalinae  
Brushfoots



*Hypanartia cinderella*



*Hypanartia cinderella*



*Hypanartia cinderella*





*Hypanartia cinderella*



*Hypanartia cinderella*



*Hypanartia dione dione*



*Hypanartia dione dione*



*Hypanartia dione dione*



*Hypanartia dione dione*



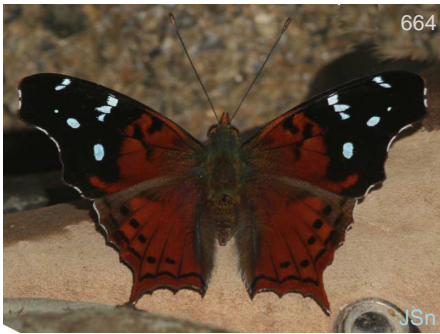
*Hypanartia dione dione*



*Hypanartia kefersteini*



*Hypanartia kefersteini*



*Hypanartia kefersteini*



*Hypanartia kefersteini*



*Hypanartia kefersteini*





*Hypanartia kefersteini*



*Hypanartia kefersteini*



*Hypanartia lethe lethe*



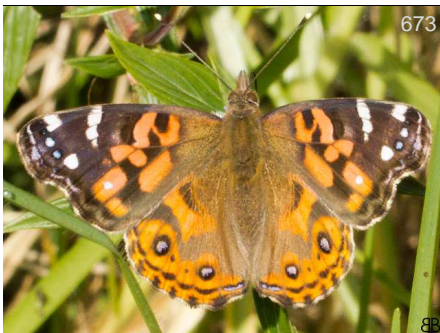
*Hypanartia lethe lethe*



*Hypanartia lethe lethe*



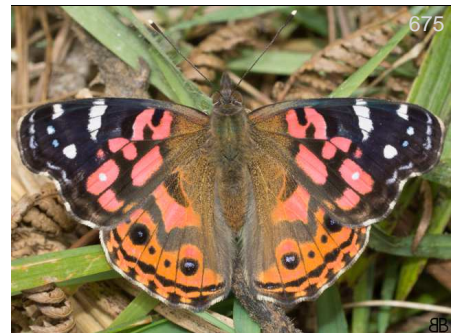
*Vanessa braziliensis*



*Vanessa braziliensis*



*Vanessa braziliensis*



*Vanessa braziliensis*



*Vanessa braziliensis*



*Vanessa braziliensis*



*Anartia amathea amathea*





*Anartia amathea amathea*



*Anartia amathea amathea*



*Anartia amathea amathea*



*Siproeta epaphus epaphus*



*Siproeta epaphus epaphus*



*Castilia castilla castilla* CO



*Castilia castilla castilla* CO



*Castilia castilla castilla* CO



*Castilia castilla castilla* CO



*Castilia castilla castilla* CO



*Castilia castilla castilla* CO



*Castilia eranites* MX-VZ





*Castilia eranites* MX-VZ



*Castilia eranites* MX-VZ



*Castilia eranites* MX-VZ



*Castilia eranites* MX-VZ



*Castilia eranites* MX-VZ



*Castilia ofella* MX-VZ



*Castilia ofella* MX-VZ



*Castilia ofella* MX-VZ



*Castilia ofella* MX-VZ



*Castilia ofella* MX-VZ



*Castilia ofella* MX-VZ



*Castilia ofella* MX-VZ





*Chlosyne lacinia lacinia* MX-CO



*Chlosyne lacinia lacinia* MX-CO



*Chlosyne lacinia lacinia* MX-CO



*Chlosyne lacinia lacinia* MX-CO



*Chlosyne lacinia lacinia* MX-CO



*Chlosyne lacinia lacinia* MX-CO



*Chlosyne lacinia lacinia* MX-CO



*Chlosyne lacinia lacinia* MX-CO



*Chlosyne lacinia lacinia* MX-CO



*Chlosyne lacinia lacinia* MX-CO



*Eresia levina* CO



*Eresia levina* CO





*Eresia polina*

VZ-BO



*Eresia polina*

VZ-BO



*Eresia polina*

VZ-BO



*Eresia polina*

VZ-BO



*Gnathotriche exclamacionis  
exclamacionis*



*Gnathotriche exclamacionis  
exclamacionis*



*Gnathotriche mundina steinii*



*Gnathotriche mundina steinii*



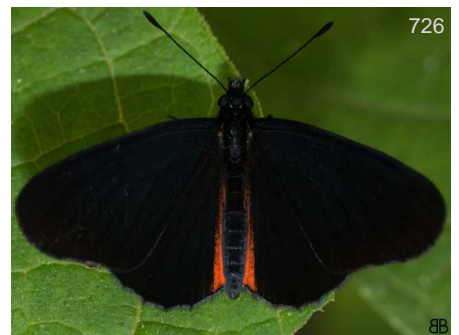
*Gnathotriche mundina steinii*



*Gnathotriche mundina steinii*



*Gnathotriche mundina steinii*



*Gnathotriche mundina steinii*





*Gnathotriche mundina steinii*



*Gnathotriche mundina steinii*



*Gnathotriche mundina steinii*



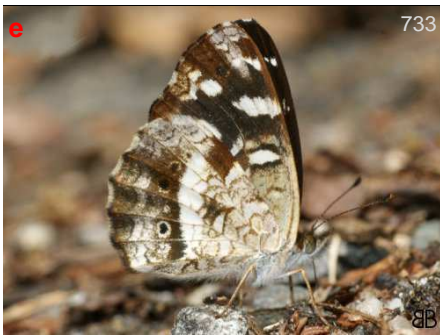
*Janatella fellula*



*Janatella fellula*



*Janatella fellula*



*Janatella fellula*



*Tegosa anieta anieta*



*Tegosa anieta anieta*



*Tegosa anieta anieta*



*Tegosa anieta anieta*



*Tegosa anieta anieta*





739

*Tegosa anieta anieta*



740

*Tegosa claudina*



741

*Tegosa claudina*



742

*Tegosa claudina*



743

*Tegosa claudina*



744

*Tegosa claudina*



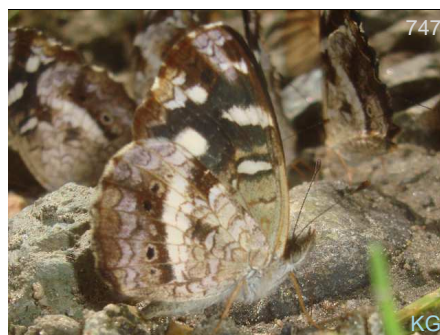
745

*Telenassa abas*



746

*Telenassa abas*



747

*Telenassa abas*

## Limenitidinae

### Sisters

Mainly africana y asiatica some Namerica



748

*Adelpha alala negra*

C CO-AR



749

*Adelpha alala negra*

C CO-AR



750

*Adelpha boeotia boeotia*

PN-BO





*Adelpha boeotia boeotia* PN-BO



*Adelpha boeotia boeotia* PN-BO



*Adelpha boeotia boeotia* PN-BO



*Adelpha boeotia boeotia* PN-BO



*Adelpha boeotia boeotia* PN-BO



*Adelpha boeotia boeotia* PN-BO



*Adelpha boeotia boeotia* PN-BO



*Adelpha delinita delinita* PN-BO



*Adelpha delinita delinita* PN-BO



*Adelpha justina* VZ-BO

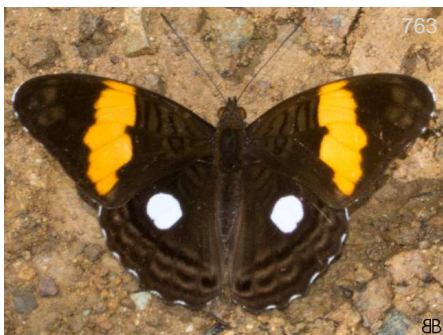


*Adelpha justina* VZ-BO



*Adelpha justina* VZ-BO

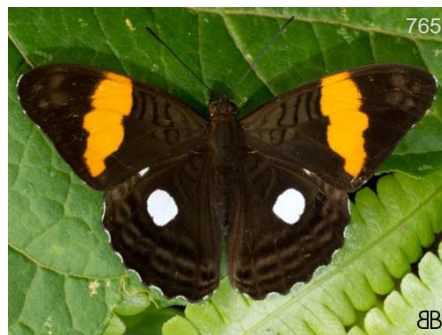




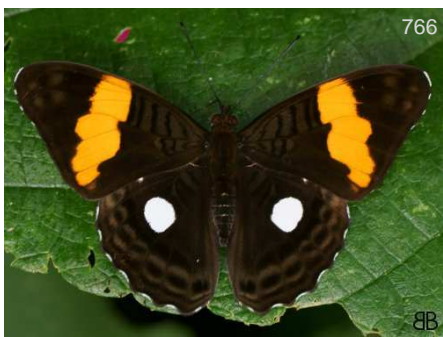
*Adelpha leucophthalma* NI-EC BB



*Adelpha leucophthalma* NI-EC BB



*Adelpha leucophthalma* NI-EC BB



*Adelpha leucophthalma* NI-EC BB



*Adelpha leucophthalma* NI-EC BB



*Adelpha leucophthalma* NI-EC BB



*Adelpha leucophthalma* NI-EC KG



*Adelpha lycorias wallisii* CO BB



*Adelpha lycorias wallisii* CO BB



*Adelpha lycorias wallisii* CO BB



*Adelpha lycorias wallisii* CO BB



*Adelpha olynthia* CO-PE BB





*Adelpha olynthia* CO-PE



*Adelpha olynthia* CO-PE



*Adelpha olynthia* CO-PE

## Charaxinae

### Leafwings

Larger butterflies, strong fliers, they usually sit with wings closed, then flash their wings open showing brilliant blue, purple or orange above. They look like dried leaves when wings are closed. They do not come to flowers, but like excrement, urine an



*Fountainea centaurus* CO



*Fountainea centaurus* CO



*Fountainea centaurus* CO



*Fountainea centaurus* CO



*Fountainea centaurus* CO



*Fountainea centaurus* CO



*Fountainea centaurus* CO



*Fountainea centaurus* CO



*Fountainea centaurus* CO





*Fountainea glycerium glycerium* -PN,CO? BB



*Fountainea glycerium glycerium* :-PN,CO? BB



*Fountainea glycerium glycerium* -PN,CO? BB



*Fountainea glycerium glycerium* -PN,CO? BB



*Fountainea glycerium glycerium* :-PN,CO? BB



*Fountainea glycerium glycerium* -PN,CO? BB



*Fountainea glycerium glycerium* -PN,CO? BB



*Fountainea nessus* VZ-BO BB



*Fountainea nessus* VZ-BO BB



*Fountainea nessus* VZ-BO BB



*Fountainea nessus* VZ-BO BB



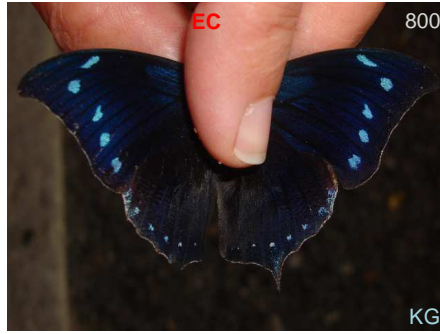
*Fountainea nessus* VZ-BO DvG





*Fountainea nessus*

VZ-BO



*Memphis arginussa*

CO-PE



*Memphis arginussa*

CO-PE



*Memphis arginussa*

CO-PE



*Memphis arginussa*

CO-PE



*Memphis lyceus*

CR-BO



*Memphis lyceus*

CR-BO



*Memphis lyceus*

CR-BO



*Memphis lyceus*

CR-BO



*Memphis lyceus*

CR-BO



*Memphis lyceus*

CR-BO



*Memphis lyceus*

CR-BO





811

BB

*Memphis lyceus*

CR-BO



812

BB

*Memphis lyceus*

CR-BO



813

BB

*Memphis pasibula*

CO-VZ



814

CO-VZ

*Memphis pasibula*



815

DvG

*Memphis pasibula*

CO-VZ



816

BB

*Memphis pasibula*

CO-VZ



817

CO-VZ

*Memphis pasibula*



818

DvG

*Memphis pasibula*

CO-VZ



819

BB

*Memphis pseudiphis*

CO



820

DvG

*Memphis pseudiphis*



821

BB

*Memphis pseudiphis*

CO



822

BB

*Memphis pseudiphis*

CO





*Memphis pseudiphis* CO



*Memphis pseudiphis* CO



*Memphis pseudiphis* CO



*Memphis pseudiphis* CO



*Archaeoprepona chromus chromus*



*Archaeoprepona chromus chromus*



*Archaeoprepona chromus chromus*



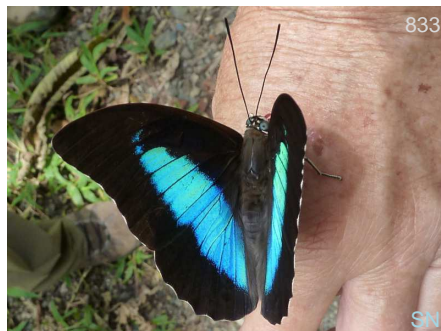
*Archaeoprepona chromus chromus*



*Archaeoprepona chromus chromus*



*Prepona laertes laertes*



*Prepona laertes laertes*



*Prepona laertes laertes*

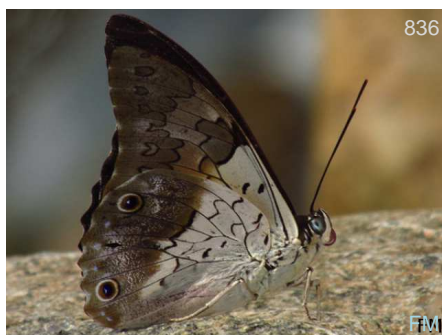




835

FM

*Prepona laertes laertes*



836

FM

*Prepona laertes laertes*



837

FM

*Prepona laertes laertes*



838

BB

*Prepona laertes laertes*



839

KG

*Prepona laertes laertes*

## Apaturinae

### Emperors

Only a few widespread species, usually bright blue triangle above, silver or brownish below. They like wet dirt and are strong fliers.



BB

*Doxocopa laurentia cherubina*



BB

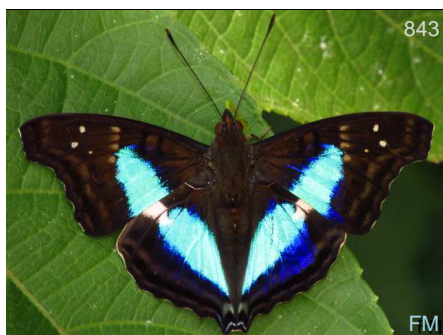
*Doxocopa laurentia cherubina*



842

BB

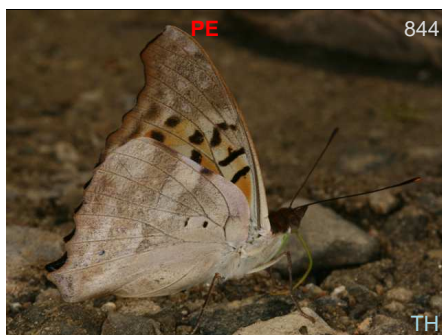
*Doxocopa laurentia cherubina*



843

FM

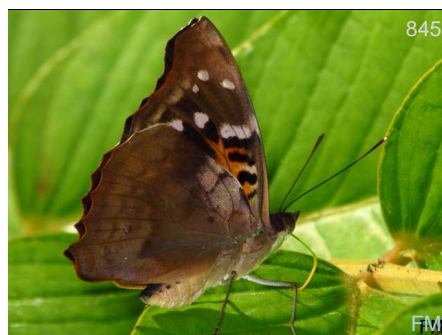
*Doxocopa laurentia cherubina*



844

TH

*Doxocopa laurentia cherubina*



845

FM

*Doxocopa laurentia cherubina*





*Doxocopa laurentia cherubina*

### Satyrinae

Satyrns, Morphos, and Owls



*Antirrhea adoptiva adoptiva* CO



*Antirrhea adoptiva adoptiva* CO



*Antirrhea geryon geryon* CO, CoOc



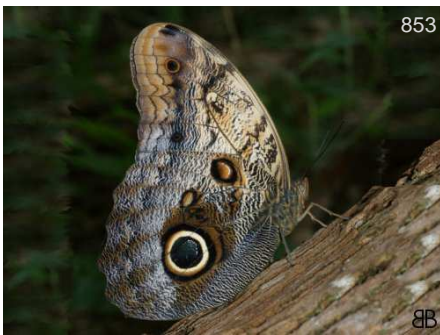
*Antirrhea geryon geryon* CO, CoOc



*Antirrhea geryon geryon* CO, CoOc



*Caligo telamonius menus* CR-CO



*Caligo telamonius menus* CR-CO

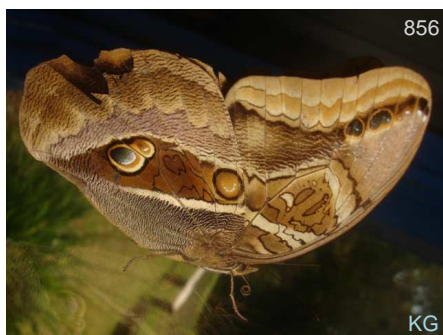


*Caligo telamonius menus* CR-CO



*Eryphanis zolvizora opimus* W Cord





856

KG

*Eryphanis zolvizora opimus* ♂ W Cord



857

KG

*Opsiphanes camena* CO



858

BB

*Pseudohaetera hypaesia*



859

BB

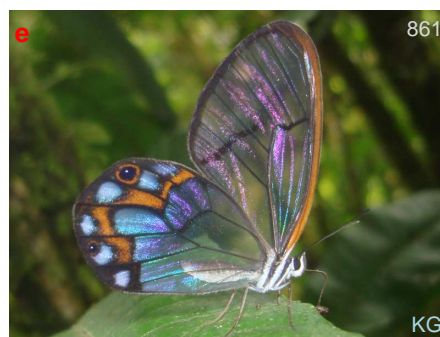
*Pseudohaetera hypaesia*



860

BB

*Pseudohaetera hypaesia*



861

KG

*Pseudohaetera hypaesia*



862

BB

*Manataria maculata maculata*



863

BB

*Manataria maculata maculata*



864

AN

*Corades enyo almo* CO-PE



865

KG

*Corades enyo almo* CO-PE



866

BB

*Corades enyo almo* CO-PE



867

KG

*Corades enyo almo* CO-PE





*Corades enyo almo* CO-PE



*Corades enyo almo* CO-PE



*Corades enyo almo* CO-PE



*Corades enyo almo* CO-PE



*Corades pannonia ploas* CO-VZ



*Corades pannonia ploas* CO-VZ



*Corades pannonia ploas* CO-VZ



*Corades pannonia ploas* CO-VZ



*Corades pannonia ploas* CO-VZ



*Corades pannonia ploas* CO-VZ



*Eretris apuleja* VZ-EC



*Eretris apuleja* VZ-EC





*Eretris apuleja* VZ-EC



*Eretris apuleja* VZ-EC



*Eretris apuleja* VZ-EC



*Eretris apuleja* VZ-EC



*Eretris apuleja* VZ-EC



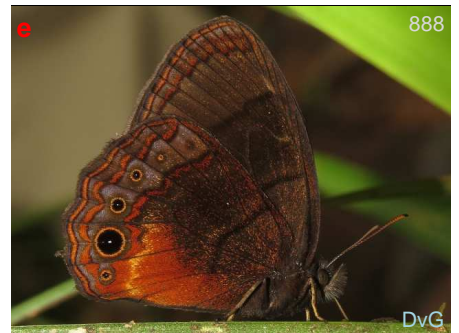
*Eretris apuleja* VZ-EC



*Eretris apuleja* VZ-EC



*Eretris apuleja* VZ-EC



*Eretris calisto calisto* CO



*Eretris calisto calisto* CO



*Eretris calisto calisto* CO



*Eretris calisto calisto* CO





*Eretris calisto calisto* CO



*Eretris calisto calisto* CO



*Eretris calisto calisto* CO



*Eretris ocellifera ocellifera*



*Eretris ocellifera ocellifera*



*Eretris ocellifera ocellifera*



*Eretris ocellifera ocellifera*



*Eretris ocellifera ocellifera*



*Eretris ocellifera ocellifera*



*Eretris ocellifera ocellifera*



*Eretris ocellifera ocellifera*



*Eretris ocellifera ocellifera*





*Eretris ocellifera ocellifera*



*Eretris ocellifera ocellifera*



*Euptychoides griphe*



*Euptychoides griphe*



*Euptychoides griphe*



*Euptychoides griphe*



*Euptychoides saturnus*



*Euptychoides saturnus*



*Euptychoides saturnus*



*Euptychoides saturnus*



*Forsterinaria boliviana*



*Forsterinaria neonympha*





*Forsterinaria neonympha*



*Forsterinaria neonympha*



*Forsterinaria neonympha*



*Forsterinaria neonympha*



*Forsterinaria neonympha*



*Forsterinaria neonympha*



*Forsterinaria pallida coipa*



*Forsterinaria pallida coipa*



*Forsterinaria pallida coipa*



*Forsterinaria pallida coipa*



*Forsterinaria rustica rustica*



*Hermeuptychia harmonia*





*Hermeuptychia harmonia*



*Hermeuptychia harmonia*



*Hermeuptychia harmonia*



*Hermeuptychia harmonia*



*Lymanopoda albocincta albocincta*



*Lymanopoda albocincta albocincta*



*Lymanopoda albocincta albocincta*



*Lymanopoda albocincta albocincta*



*Lymanopoda albocincta albocincta*



*Lymanopoda albocincta albocincta*



*Lymanopoda albocincta albocincta*



*Lymanopoda albocincta albocincta*





*Lymanopoda albocincta albocincta*



*Lymanopoda caucana caucana*



*Lymanopoda caucana caucana*



*Lymanopoda caucana caucana*



*Lymanopoda caucana caucana*



*Lymanopoda obsoleta*



*Lymanopoda obsoleta*



*Lymanopoda obsoleta*



*Lymanopoda obsoleta*



*Lymanopoda obsoleta*



*Lymanopoda panacea*



*Megeuptychia antonoe*





*Megeuptychia antonoe*



*Mygona irmina*



*Mygona irmina*



*Mygona irmina*



*Mygona irmina*



*Mygona irmina*



*Oressinoma typhla typhla*



*Oressinoma typhla typhla*



*Oressinoma typhla typhla*



*Oxeoschistus puerta simplex*



*Oxeoschistus puerta simplex*



*Oxeoschistus puerta simplex*





*Oxeoschistus puerta simplex*



*Pedaliodes manis*



*Pedaliodes manis*



*Pedaliodes manis*



*Pedaliodes pisonia*



*Pedaliodes pylas*



*Pedaliodes pylas*



*Pronophila orcus orcus*



*Pronophila orcus orcus*



*Pronophila orcus orcus*



*Pronophila orcus orcus*



*Pronophila orcus orcus*





*Pronophila orcus orcus*



*Pronophila orcus orcus*



*Pronophila unifasciata antioquiiana*



*Pronophila unifasciata antioquiiana*



*Pseudodebis puritana*



*Pseudodebis puritana*



*Pseudodebis puritana*



*Pseudodebis puritana*



*Pseudodebis puritana*



*Pseudomaniola phaelis pholoe*



*Pseudomaniola phaelis pholoe*



*Pseudomaniola phaelis pholoe*





*Taygetis chrysogone*



*Taygetis chrysogone*



*Taygetis chrysogone*



*Taygetis chrysogone*



*Taygetis chrysogone*



*Taygetis chrysogone*

## Danainae

### Monarchs & Clearwings

Tribe Danaini/Monarchs – orange/rust colored butterflies, fairly good sized, famous North American migrants.

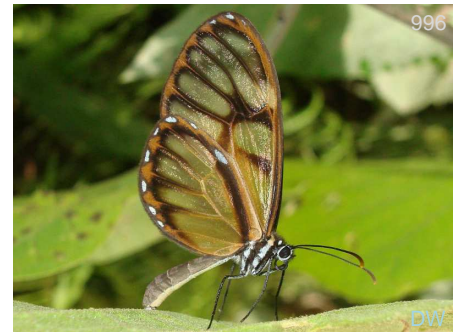
Tribe Ithomiini/Clearwings & Tigerwings – crystal or transparent winged, or orange and black striped. They usually fly in shaded areas, very slow



*Dircenna adina steinheili* CO-EC



*Dircenna adina steinheili* CO-EC



*Dircenna adina steinheili* CO-EC



*Elzunia humboldt bomplandii* CO, Otun



*Elzunia humboldt bomplandii* CO, Otun



*Episcada salvinia apia* CO





*Episcada salvinia apia* CO



*Episcada salvinia apia* CO



*Episcada salvinia apia* CO



*Godyris panthyle panthyle*



*Godyris panthyle panthyle*



*Greta andromica andromica*



*Greta andromica andromica*



*Greta andromica andromica*



*Greta andromica andromica*



*Greta andromica andromica*



*Ithomia hymettia*



*Ithomia hymettia*





*Ithomia hymettia*



*Ithomia iphianassa alienassa*



*Ithomia iphianassa alienassa*



*Ithomia iphianassa alienassa*



*Ithomia iphianassa alienassa*



*Ithomia iphianassa alienassa*



*Ithomia iphianassa alienassa*



*Ithomia iphianassa alienassa*



*Ithomia iphianassa alienassa*



*Ithomia iphianassa alienassa*



*Ithomia terra oeanthe*



*Ithomia terra terra*





*Ithomia terra terra*



*Oleria fumata richardina*



*Oleria fumata richardina*



*Oleria fumata richardina*



*Oleria fumata richardina*



*Oleria makrena caucana*



*Oleria makrena caucana*



*Oleria makrena caucana*



*Oleria phenomoe*



*Oleria santineza*

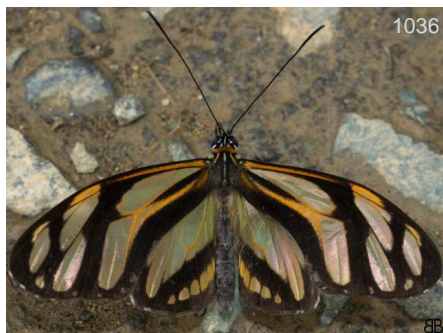


*Pagyris ulla ulla*



*Pagyris ulla ulla*





*Patricia deryllidas deryllidas*



*Patricia deryllidas deryllidas*



*Patricia deryllidas deryllidas*



*Patricia deryllidas deryllidas*



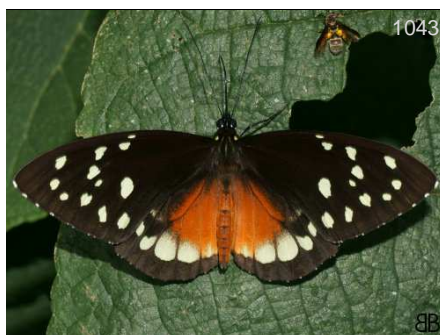
*Patricia deryllidas deryllidas*



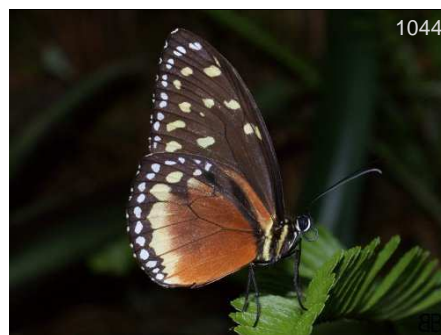
*Pteronymia artena*



*Pteronymia medellina medellina*



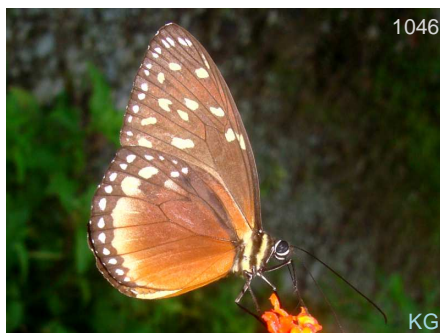
*Tithorea tarricina hecalesina*



*Tithorea tarricina hecalesina*



*Tithorea tarricina hecalesina*



*Tithorea tarricina hecalesina*

## Cyrestinae

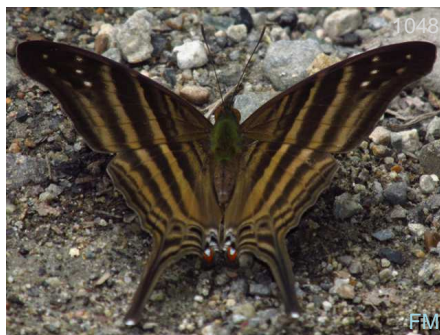
### Daggerwings

Larger butterflies with long, pointed tails, like daggers in English. Often sit on wet dirt with wings open. Many are all brown or all orange with thin vertical stripes.





*Marpesia chiron*



*Marpesia chiron*



*Marpesia chiron*



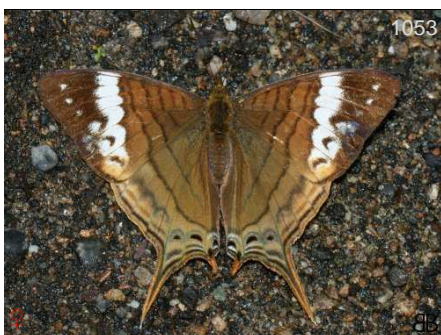
*Marpesia chiron*



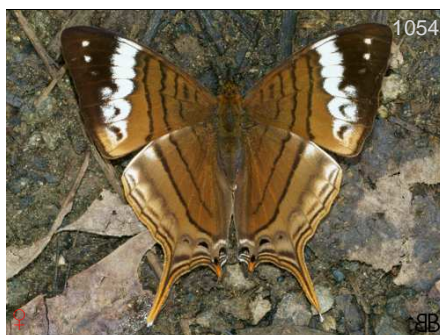
*Marpesia corinna*



*Marpesia corinna*



*Marpesia corinna*



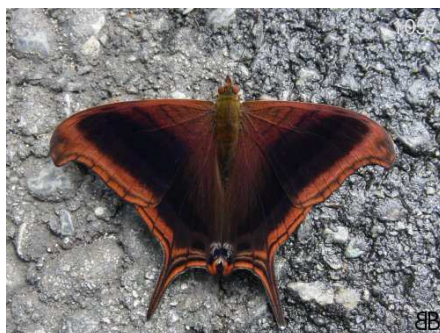
*Marpesia corinna*



*Marpesia corinna*



*Marpesia zerynthia zerynthia*



*Marpesia zerynthia zerynthia*



*Marpesia zerynthia zerynthia*

## Biblidinae

### Tropical Brushfoots

Medium sized butterflies, varied colors, many are widespread. Includes 88's.

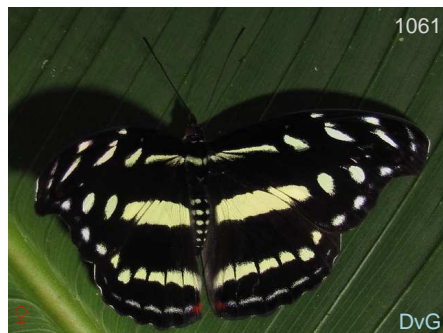




*Catonephele chromis chromis* CO-PE



*Catonephele chromis chromis* CO-PE



*Catonephele chromis chromis* CO-PE



*Catonephele chromis chromis* CO-PE



*Eunica caralis caralis* HN-VZ



*Eunica caralis caralis* HN-VZ



*Eunica carias carias* CR-CO



*Eunica carias carias* CR-CO



*Eunica carias carias* CR-CO



*Eunica carias carias* CR-CO



*Eunica carias carias* CR-CO



*Epiphile chrysites chrysites* VZ-BO





*Epiphile chrysites chrysites* VZ-BO



*Epiphile chrysites chrysites* VZ-BO



*Epiphile chrysites chrysites* VZ-BO



*Epiphile dilecta jenkinsi* CO-PE



*Epiphile dilecta jenkinsi* CO-PE



*Epiphile dilecta jenkinsi* CO-PE



*Epiphile epimenes epimenes* CO



*Epiphile epimenes epimenes* CO



*Epiphile epimenes epimenes* CO



*Epiphile epimenes epimenes* CO



*Epiphile iblis iblis* CO-VZ



*Epiphile iblis iblis* CO-VZ





1083

BB

*Epiphile iblis iblis*

CO-VZ



1084

BB

*Epiphile iblis iblis*

CO-VZ



1085

BB

*Epiphile iblis iblis*

CO-VZ



1086

FM

*Epiphile iblis iblis*

CO-VZ



1087

FM

*Epiphile iblis iblis*

CO-VZ



1088

BB

*Epiphile neildi bakuru*

CO



1089

CO

*Epiphile neildi bakuru*



1090

SS

*Pyrrhogyra edocla edocla*

MX-VZ



1091

BB

*Pyrrhogyra edocla edocla*

MX-VZ



1092

BB

*Pyrrhogyra edocla edocla*

MX-VZ



1093

DvG

*Diaethria clymena marchalii*

NI-BR



1094

DW

*Diaethria clymena marchalii*

NI-BR





*Diaethria clymena marchalii* NI-BR BB



*Diaethria clymena marchalii* NI-BR DvG



*Diaethria clymena marchalii* NI-BR BB



*Diaethria clymena marchalii* NI-BR BB



*Diaethria clymena marchalii* NI-BR DW



*Diaethria clymena marchalii* NI-BR BB



*Diaethria clymena marchalii* NI-BR DW



*Diaethria euclides gueneei* CO-EC DvG



*Diaethria euclides gueneei* CO-EC DvG



*Diaethria euclides gueneei* CO-EC SN



*Diaethria euclides gueneei* CO-EC DvG



*Diaethria euclides gueneei* CO-EC BB





*Diaethria neglecta neglecta* CO-BO



*Diaethria neglecta neglecta* CO-BO



*Diaethria neglecta neglecta* CO-BO



*Perisama bomplandii parabomplandii* CO



*Perisama bomplandii parabomplandii* CO



*Perisama bomplandii parabomplandii* CO



*Perisama bomplandii parabomplandii* CO



*Perisama bomplandii parabomplandii* CO



*Perisama bomplandii parabomplandii* CO



*Perisama dorbignyi paula* CO



*Perisama dorbignyi paula* CO



*Perisama humboldtii humboldtii* CO





*Perisama humboldtii humboldtii* CO



*Perisama humboldtii humboldtii* CO



*Perisama humboldtii humboldtii* CO



*Perisama humboldtii humboldtii* CO



*Perisama humboldtii humboldtii* CO



*Perisama humboldtii humboldtii* CO



*Perisama humboldtii humboldtii* CO



*Perisama ilia ilia*



*Perisama ilia ilia*



*Perisama ilia ilia*

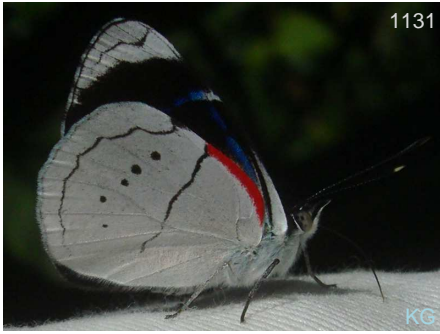


*Perisama ilia ilia*



*Perisama ilia ilia*





*Perisama ilia ilia*



*Perisama lebasii astuta*



*Perisama lebasii astuta*



*Perisama oppelii oppelii*



*Perisama oppelii oppelii*



*Perisama oppelii oppelii*



*Perisama oppelii oppelii*



*Perisama oppelii oppelii*



*Perisama oppelii oppelii*



*Perisama tringa tringa*



*Perisama tryphena cauca*



*Perisama tryphena cauca*



This catalog is the result of the accumulative efforts from a large number of people. The following are the photographers who have contributed their photos to this work, thank you very much.

## Fotógrafos - Photographers

AH	Adrian Hoskins	AN	Andrew Neild	BB	Juan Guillermo Jaramillo Velazquez
BBn	Bill Bouton	BBt	Bill Berthet	CCvI	Charles Covell
CRm	Cristóbal Ríos-Málaver	DvG	David Geale	DW	Dan Wade
FH	Fred Heath	FM	Fredy Montero	GM	Glenn Mahler
JAB	Johnnier Arango Bermudez	JJ	Jorge J Restrepo	Jpe	Jorge Perez
JSn	Jim Snyder	KG	Kim Garwood	KK	Ken Kertell
KW	Kay Wade	KW <sub>s</sub>	Kristine Wallstrom	KZ	Kristof Zyskowski
LEM	Luis Eduardo Mejia	Leo	Leopoldina Tapasco	LG	Leif Gabrielsen
MgC	McGuire Center, Gainesville, FL	MM	Martin Moreno	MR	Martin Reed
PB	Priscilla Brodtkin	PC	Pedro José Cardona Camache	PT	Paul Thompson
RC	Rick Cech	RG	Rodrigo Gaviria Obregon	RL	Richard Lehman
RR	Roger Rittmaster	SN	Sherry Nelson	SS	Shirley Sekarajasingham
TH	Tony Hoare				

## Agradecimientos - Acknowledgements

Este catálogo es el resultado del esfuerzo acumulativo de un gran número de colaboradores y fotógrafos a quienes damos las gracias.

Agradecemos a los siguientes expertos que generosamente han ayudado en la identificación de algunas de nuestras fotos: Stephane Attal, Andrew Brower, Bernard Hermier, James Mallet, Andrew Neild, Gregory Nielsen, Tomasz Pycrz, Julian Salazar, Aaron Soh and Keith Willmott. Todos los errores en identificación son responsabilidad de Kim Garwood o Juan Guillermo Jaramillo V.

This catalog is the result of cumulative effort of many collaborators and photographers whom we thank.

We thank the following experts who generously helped in identifying some of our photos: Stephane Attal, Andrew Brower, Bernard Hermier, James Mallet, Andrew Neild, Gregory Nielsen, Tomasz Pycrz, Julian Salazar, Aaron Soh and Keith Willmott. All errors in identifications are the responsibility of Kim Garwood and Juan Guillermo Jaramillo.

Numero de especies en la base de datos 3.863 y con subespecies 5.039, numero de fotos 8.415, especies y subespecies con foto 2.791, con la colaboracion de 136 fotografos.

Number of species in database 3.863 and with subspecies 5.039, number of photos 8.415, species and subspecies with photo 2.791, with the colaboration of 136 photographers.

## Bibliografía - Bibliography



## Para citar utilice - To quote use:

GARWOOD K., JARAMILLO J.G. Catálogo de las mariposas de Santuario de F y F Otún Quimbaya, Pereira, Risaralda, Colombia [en línea], BioButterfly Database. Disponible en: < <http://www.neotropicalbutterflies.com/> y la fecha de impresión jueves, 06 de abril de 2017

## Páginas web recomendadas - Recommended websites

Las siguientes páginas dan información complementaria al catálogo o han sido útiles en la identificación de especies:  
The following pages provide additional information to the catalog or have been useful in identifying species:

Información general de mariposas: [www.learnaboutbutterflies.com](http://www.learnaboutbutterflies.com)

Mariposas del neotrópico: [www.neotropicalbutterflies.com](http://www.neotropicalbutterflies.com)

Mariposas de Norte, Centro y Sur América, más Caribe: [www.butterfliesofamerica.com](http://www.butterfliesofamerica.com)

Mariposas del Parque Nacional Sangay – Ecuador: [www.sangay.eu/index.php?lang=en](http://www.sangay.eu/index.php?lang=en)

Fotografía de mariposas: [butterflyphotography-bb.blogspot.com](http://butterflyphotography-bb.blogspot.com) y vea video en [www.youtube.com/watch?v=-9-](http://www.youtube.com/watch?v=-9-)

---

*inf Especies por localidad 3CV para PDF - 10feb2016*





Este listado no es un índice, la numeración consecutiva sirve para contar las especies de la localidad, además el listado puede contener un número mayor de especies que el catálogo pues hay especies observadas, colectadas o reportadas en la literatura que no tienen aún fotos en la base de datos.

This list is not an index, the consecutive numbering is used to count the species of the locality, in addition the list may contain a greater number of species than the catalog as there are species observed, collected or reported in the literature that do not yet have photos in the database.

### Mariposas de Santuario de F y F Otún Quimbaya

## Hesperiidae

### Eudaminae

- 1 *Astraptes anaphus annetta*
- 2 *Astraptes chiriquensis chiriquensis*
- 3 *Astraptes fulgerator*
- 4 *Astraptes galesus cassius*
- 5 *Astraptes talus*
- 6 *Autochton neis*
- 7 *Autochton zarex*
- 8 *Epargyreus exadeus cruza*
- 9 *Epargyreus spina spina*
- 10 *Phanus grandis*
- 11 *Phocides johnsoni*
- 12 *Phocides perillus*
- 13 *Ridens harpagus*
- 14 *Urbanus proteus proteus*
- 15 *Urbanus simplicius*
- 16 *Urbanus sp blue otun*
- 17 *Urbanus tanna*
- 18 *Urbanus teleus*
- 19 *Urbanus viterboana*

### Hesperiinae

- 20 *Alera vulpina*
- 21 *Anthoptus epictetus*
- 22 *Apaustus gracilis gracilis*
- 23 *Aroma henricus henricus*
- 24 *Carystoides sp otun*
- 25 *Corticea mendica schwarzi*
- 26 *Dion carmenta acraea*
- 27 *Falga jeconia jeconia*
- 28 *Lucida lucia scopas*
- 29 *Lychnuchus brasta*

- 30 *Mnestheus ittona*
- 31 *Niconiades viridis vista*
- 32 *Nyctelius nyctelius nyctelius*
- 33 *Perichares adela*
- 34 *Perichares deceptus drina*
- 35 *Poanes inimica*
- 36 *Pompeius pompeius*
- 37 *Quinta cannae*
- 38 *Racta apella apella*
- 39 *Sacrator sacrator*
- 40 *Talides alternata*
- 41 *Thespieus pinda*
- 42 *Vettius coryna coryna*
- 43 *Vettius diversa maeon*
- 44 *Vettius drova*
- 45 *Wahydra thisbe*
- 46 *Zenis jebus janka*

### Heteropterinae

- 47 *Dalla frater*
- 48 *Dalla mesoxantha*
- 49 *Dalla miser*

### Pyrginae

- 50 *Achlyodes pallida*
- 51 *Bolla giselus tornea*
- 52 *Celaenorrhinus bifurcus*
- 53 *Chalypyge zereda rufipectus*
- 54 *Cyclosemia anastomosis*
- 55 *Ebrietas badia*
- 56 *Ebrietas infanda*
- 57 *Gindanes brebisson panaetius*
- 58 *Heliopetes alana*
- 59 *Heliopetes laviana laviana*
- 60 *Mimoniades nurscia nurscia*

- 61 *Mylon lassia*
- 62 *Mylon zephus zephus*
- 63 *Noctuana haematospila*
- 64 *Potamanaxas thoria*
- 65 *Pyrgus orcus*
- 66 *Pyrrhopyge aziza aziza*
- 67 *Quadrus truncata*
- 68 *Sostrata grippa*
- 69 *Theagenes albiplaga*
- 70 *Yanguna spatiosa spatiosa*
- 71 *Zera hyacinthinus hyacinthinus*
- 72 *Zera nolckeni*
- 73 *Zera zera*

## Papilionidae

### Papilioninae

- 74 *Pterourus coroeus syndemis*

## Pieridae

### Coliadinae

- 75 *Colias dimera*
- 76 *Eurema albula albula*
- 77 *Eurema arbela gratiosa*
- 78 *Eurema salome salome*
- 79 *Eurema xantochlora xantochlora*
- 80 *Phoebis argante argante*
- 81 *Phoebis neocypris rurina*
- 82 *Phoebis philea philea*

### Dismorphiinae

- 83 *Dismorphia altis sophia*
- 84 *Dismorphia crisis foedora*
- 85 *Dismorphia lewyi lewyi*
- 86 *Dismorphia lewyi dolorita*



- 87 *Dismorphia lua id. ae*  
88 *Dismorphia medora medora*  
89 *Dismorphia zathoe othoe*  
90 *Enantia melite citrinella*  
91 *Lieinix nemesis nemesis*  
92 *Moschoneura pinthous ela*

### Pierinae

- 93 *Catasticta ctemene rubricata*  
94 *Catasticta notha caucana*  
95 *Catasticta prioneris albescens*  
96 *Catasticta seitzii seitzii*  
97 *Catasticta sisamunus sisamunus*  
98 *Hesperocharis marchalii*  
99 *Leodonta dysoni*  
100 *Leodonta tellane intermedia*  
101 *Leptophobia aripa aripa*  
102 *Leptophobia caesia phanokia*  
103 *Leptophobia helena helena*  
104 *Leptophobia penthica penthica*  
105 *Leptophobia tovaria pseudolympia*

## Riodinidae

### Riodininae

- 106 *Baetis sulphurea macularia*  
107 *Emesis cyprina guppyi*  
108 *Emesis mandana mandana*  
109 *Emesis tenedia*  
110 *Leucochimona icare*  
111 *Mesosemia metuana metuana*  
112 *Mesosemia mevania mevania*  
113 *Mesosemia pacifica*  
114 *Necyria bellona incendiaria*  
115 *Rhetus dysonii caligosus*  
116 *Sarota myrtea*  
117 *Siseme alectryo alectryo*  
118 *Siseme aristoteles sprucei*  
119 *Siseme pallas pallas*

## Lycaenidae

### Polyommatainae

- 120 *Cupido comyntas texana*  
121 *Zizula cyna*

### Theclinae

- 122 *Arawacus leucogyna*  
123 *Cyanophrys acaste*  
124 *Johnsonita auda*

- 125 *Micandra comae*  
126 *Ocaria ocrisia*  
127 *Salazaria sala*  
128 *Strephonota tephraeus*  
129 *Theritas augustinula*

## Nymphalidae

### Apaturinae

- 130 *Doxocopa laurentia cherubina*

### Biblidinae

- 131 *Catonephele chromis chromis*  
132 *Diaethria clymena marchalii*  
133 *Diaethria euclides gueneei*  
134 *Diaethria neglecta neglecta*  
135 *Epiphile chrysites chrysites*  
136 *Epiphile dilecta jenkinsi*  
137 *Epiphile epimenes epimenes*  
138 *Epiphile iblis iblis*  
139 *Epiphile neildi bakuru*  
140 *Eunica caralis caralis*  
141 *Eunica carias carias*  
142 *Perisama bomplandii parabomplandii*  
143 *Perisama dorbignyi paula*  
144 *Perisama humboldtii humboldtii*  
145 *Perisama ilia ilia*  
146 *Perisama lebasii lebasii*  
147 *Perisama lebasii astuta*  
148 *Perisama oppelii oppelii*  
149 *Perisama tringa tringa*  
150 *Perisama tryphena cauca*  
151 *Pyrrhogyra edocla edocla*

### Charaxinae

- 152 *Archaeoprepona chromus chromus*  
153 *Fountainea centaurus*  
154 *Fountainea glycerium glycerium*  
155 *Fountainea nessus*  
156 *Memphis arginussa*  
157 *Memphis lyceus*  
158 *Memphis pasibula*  
159 *Memphis pseudiphis*  
160 *Prepona laertes laertes*

### Cyrestinae

- 161 *Marpesia chiron*  
162 *Marpesia corinna*  
163 *Marpesia zerynthia zerynthia*

### Danainae

- 164 *Dircenna adina steinheili*  
165 *Elzunia humboldt bomplandii*  
166 *Episcada salvinia apia*  
167 *Godyris panthyle panthyle*  
168 *Greta andromica andromica*  
169 *Hyalenna perasippa perasippa*  
170 *Ithomia hymettia*  
171 *Ithomia iphianassa alienassa*  
172 *Ithomia terra terra*  
173 *Ithomia terra oenanthe*  
174 *Oleria fumata richardina*  
175 *Oleria makrena caucana*  
176 *Oleria phenomoe*  
177 *Oleria santineza*  
178 *Pagyris ulla ulla*  
179 *Pagyris ulla dimidiata*  
180 *Patricia deryllidas deryllidas*  
181 *Pteronymia artena*  
182 *Pteronymia medellina medellina*  
183 *Tithorea tarricina hecalesina*

### Heliconiinae

- 184 *Actinote pellenea perfulva*  
185 *Altinote neleus neleus*  
186 *Altinote ozoneme ozoneme*  
187 *Altinote stratonice stratonice*  
188 *Dione glycera*  
189 *Dione junio junio*  
190 *Dione moneta*  
191 *Eueides procula edias*  
192 *Heliconius clysonymus clysonymus*  
193 *Heliconius cydno cydnides*  
194 *Podotricha judith caucana*

### Limenitidinae

- 195 *Adelpha alala negra*  
196 *Adelpha boeotia boeotia*  
197 *Adelpha delinita delinita*  
198 *Adelpha justina*  
199 *Adelpha leucophthalma*  
200 *Adelpha lycorias wallisii*  
201 *Adelpha olynthia*

### Nymphalinae

- 202 *Anartia amathea amathea*  
203 *Castilia castilla castilla*  
204 *Castilia eranites*  
205 *Castilia ofella*  
206 *Chlosyne lacinia lacinia*

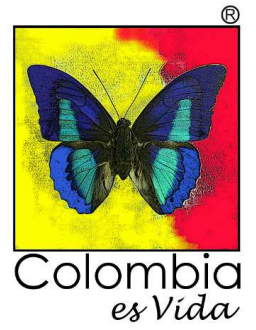


207	<i>Eresia levina</i>	252	<i>Pseudodebis puritana</i>
208	<i>Eresia polina</i>	253	<i>Pseudohaetera hypaesia</i>
209	<i>Gnathotriche exclamationis exclamationis</i>	254	<i>Pseudomaniola phaelis pholoe</i>
210	<i>Gnathotriche mundina steinii</i>	255	<i>Taygetis chrysogone</i>
211	<i>Hypanartia cinderella</i>		
212	<i>Hypanartia dione dione</i>		
213	<i>Hypanartia kefersteini</i>		
214	<i>Hypanartia lethe lethe</i>		
215	<i>Janatella fellula</i>		
216	<i>Siproeta epaphus epaphus</i>		
217	<i>Tegosa anieta anieta</i>		
218	<i>Tegosa claudina</i>		
219	<i>Telenassa abas</i>		
220	<i>Vanessa braziliensis</i>		

### Satyrinae

221	<i>Antirrhea adoptiva adoptiva</i>
222	<i>Antirrhea geryon geryon</i>
223	<i>Caligo telamonius menus</i>
224	<i>Corades enyo almo</i>
225	<i>Corades pannonia ploas</i>
226	<i>Eretris apuleja</i>
227	<i>Eretris calisto calisto</i>
228	<i>Eretris ocellifera ocellifera</i>
229	<i>Eryphanis zolvizora opimus</i>
230	<i>Euptychoides griphe</i>
231	<i>Euptychoides saturnus</i>
232	<i>Forsterinaria boliviana</i>
233	<i>Forsterinaria neonympha</i>
234	<i>Forsterinaria pallida coipa</i>
235	<i>Forsterinaria rustica rustica</i>
236	<i>Hermeuptychia harmonia</i>
237	<i>Lymanopoda albocincta albocincta</i>
238	<i>Lymanopoda caucana caucana</i>
239	<i>Lymanopoda obsoleta</i>
240	<i>Lymanopoda panacea</i>
241	<i>Manataria maculata maculata</i>
242	<i>Megeuptychia antonoe</i>
243	<i>Mygona irmina</i>
244	<i>Opsiphanes camena</i>
245	<i>Oressinoma typhla typhla</i>
246	<i>Oxeoschistus puerta simplex</i>
247	<i>Pedaliodes manis</i>
248	<i>Pedaliodes pisonia</i>
249	<i>Pedaliodes pylas</i>
250	<i>Pronophila orcus orcus</i>
251	<i>Pronophila unifasciata antioquiana</i>





---

infEspecies por localidad listado TXT - feb21 2016