

Catálogo de mariposas

Santa María

Santa María, Boyaca



Kim Garwood & Juan Guillermo Jaramillo V.

BB

Convenciones



La taxonomía y la secuencia de este catálogo está basado en el Atlas of Neotropical lepidoptera, listado de chequeo parte 4A por Gerardo Lamas, 2004 y en www.butterfliesofamerica.com

La mayoría de fotos fueron tomadas a mariposas vivas en su ambiente natural. Las fotos de especímenes son usadas para mostrar algunas características que no son posibles fotografiar en la naturaleza o para mostrar especies de las cuales aún no tenemos ejemplares vivos, en ese caso ponemos una foto de esta especie tomada en otro país neotropical, indicando en la foto el país donde fue registrada con una abreviación de dos letras. Esta abreviación corresponde al código internacional usado como terminación en internet del código de cada país, ej. Brasil BR, Ecuador EC, Perú PE etc. Las especies fotografiadas en Colombia no tienen el código de país.

Debajo de la foto están el nombre científico y el rango de distribución de la especie con abreviación del nombre de los países de norte a sur, en algunos casos de con especies que están en Estados Unidos y México usamos el código de los estados más al sur donde están las especies TX Texas, CHI Chiapas.

Las fotos serán reemplazadas una vez se tome la foto de estas especies en Colombia, toda colaboración que permita completar el catalogo será bienvenida y el fotógrafo tendrá los créditos.

Nombres científicos con sp y el nombre de una localidad, tienen identificación desconocida, con duda o son especies sin describir por la ciencia, por favor si Usted puede ayudar a completar o corregir escribanos a los contactos.

Advertencia

Este catálogo hace parte del Catálogo de mariposas de Colombia, es una versión preliminar en proceso de construcción y revisión, generado desde una base de datos, puede tener errores de taxonomía, de autores, de fotógrafos, de ortografía, de distribución geográfica y de códigos o duplicados que deben ser corregidos.

Al ser en un medio electrónico las correcciones son fáciles de hacer, no implican desperdicio de papel y se puede actualizar permanentemente.

Son bienvenidas todas las críticas, sugerencias y correcciones para mejorarlo y corregirlo.

Si desea colaborar tenemos una metodología para hacerlo por favor llame a Juan Guillermo Jaramillo V. al celular 57-3108306732 o escriba al correo arcas1956@gmail.com o a Kim Garwood kimgwrw@sbcglobal.net o www.neotropicalbutterflies.com

Todos los errores son responsabilidad de Juan Guillermo Jaramillo V. y Kim Garwood.

Conventions



Taxonomy and sequence of this catalog is based on the Atlas of Neotropical Lepidoptera, check list of Part 4A by Gerardo Lamas, 2004 and www.butterfliesofamerica.com

Most photos were taken of live butterflies in their natural environment. The photos of specimens are used to display some features that are not possible to photograph in nature. In some cases we have used photos taken in another neotropical country, and in these photos the other country is shown by a two letter abbreviation. This abbreviation corresponds to the international code used as internet country code, eg BR Brazil. The species photographed in Colombia do not have the country code.

Photos will be replaced once the picture is taken of these species in Colombia, any collaboration or contribution of photos that adds to the catalog will be welcome and all photographers will be credited.

Scientific names with the letters sp and the name of a town are used for unknown or unsure id's. If you can help with id's or corrections, please contact the authors.

Warning

This catalog is part of the checklist of Colombian butterflies, it is a work in progress and is not complete. It is a preliminary version under construction and review, generated from a database. It may contains errors in taxonomy, author, photographers, spelling, geographical distribution and codes or duplicates that must be corrected.

Being an electronic medium, corrections are easy to make. There is nothing printed, and information and id's can be easily updated.

We welcome all criticisms, suggestions, and corrections to improve and correct this work.

If you want to help with this work, please contact Juan Guillermo Jaramillo at cellular 57-3108306732, email arcas1956@gmail.com, or Kim Garwood, email kimgrwd@sbcglobal.net or www.neotropicalbutterflies.com, to learn about our methodology.

All errors are the responsibility of Juan Guillermo Jaramillo V. and Kim Garwood.

Familias y subfamilias de mariposas

Las mariposas se clasifican en seis familias que agrupan especies con características comunes.

Hesperiidae

Esta familia de mariposas primitivas tiene como característica las antenas con ganchito en la parte final. Tienen cabeza y cuerpo grueso y muchas tienen colores oscuros o cafés. 4 subfamilias.



Eudaminae
Spreadwing skippers



Pyrginae
Spreadwing skippers



Pyrginae
Firetips



Heteropterinae
Skipperlings



Hesperiinae
Grass Skippers

Butterfly families and subfamilies

The butterflies are classified into six families comprising species with common characteristics.

Skippers

Mostly small with stout bodies, fast fliers, skipping or zipping flight. Many are brown or dark, drab colors. A large family, about 30% of all butterflies. Eudaminae and Pyrginae sit with wings spread open, Heteropterinae often sit with wings closed, Hesperiinae often sit in jet plane position. 4 subfamilies.

Papilionidae

Mariposas grandes, muchas con colas. Vuelan con fortaleza y les gusta posarse en pantanos o zonas húmedas moviendo constantemente las alas. La mayoría son negras con rayas amarillas o negras con parches rojos en las alas posteriores.

Las antenas tienen la parte final engrosada y curvada.



Papilioninae



Swallowtails



Swallowtails

Mostly large butterflies, many with tails. Strong fliers, they like to mudpuddle on wet dirt with constantly moving, quivering wings. They are mostly black with yellow stripes or black with red patches on the hindwings (Parides).

The antenna is bulky and curved at the end.

Pieridae

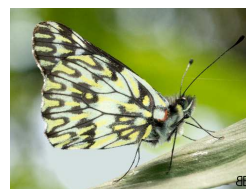
La mayoría de pierides son amarillas, blancas o naranja, aunque hay algunas negras. Las pierides visitan flores y son comunes en jardines, pero las dismorfias prefieren los bosques sombreados. Tienen 3 subfamilias.



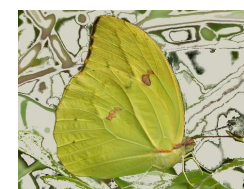
Dismorphiinae
Mimic-Whites



Pierinae



Whites



Coliadinae



Sulphurs

Whites and sulphurs

Mostly white, yellow or orange, but some are black. Whites and Sulphurs like flowers and are often in gardens, but Dismorphiinae like the shaded forest. They have 3 subfamilies.

Riodinidae

La mayoría de riodínidos se encuentran en tierras bajas, es una familia con mucha variedad. Muchas tienen manchas metálicas y se posan por debajo de las hojas. Algunas tienen colas. Tienen dos subfamilias.

Metalmarks

More species are found in the lowlands. This is the most varied family; they can come in many shapes, sizes and colors. Some have tails, many do not. Some genera sit with wings closed, some with wings open. They pose under the leaves. They have 2 subfamilies.



Euselasiinae Metalmarks



Riodiniinae



Metalmarks



Lycaenidae

En general los licénidos son mariposas pequeñas, muchas tienen colas pequeñas para distraer a los predadores. Son difíciles de ver pues muchas viven en el docel. A menudo son azules al abrir las alas. Tienen 2 subfamilias.

Hairstreaks and blues

Hairstreaks often have tails, but not always. This is the least common of the 6 families, often in the canopy and hard to see. Small butterflies, often brilliant blue above. They have 2 subfamilies.



Polyommatainae Blues



Theclinae



Hairstreaks

Nymphalidae

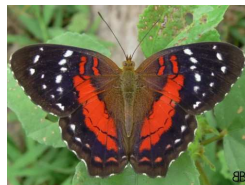
Las nifáidos solo tienen 4 patas visibles, las otras 2 están acortadas y cerca a la cabeza como escobas. Es la familia más abundante y representa 40% del total. Tiene 10 subfamilias.

Brushfoots

Only show 4 walking legs, the front 2 legs are held up close to the head, like brushes. This is the largest family, about 40%, many subfamilies.



Heliconiinae
Longwings



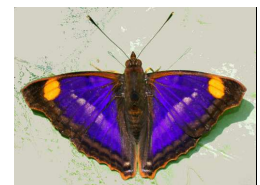
Nymphalinae
Brushfoots Crescents



Limenitidinae
Sisters



Charaxinae
Leafwings



Apaturinae
Emperors



Satyrinae
Satyrs, Morphos



Danainae
Clearwings



Danainae
Monarchs



Cyrestinae
Daggerwings



Biblidinae
Tropicals

Hesperiidae

Skippers

Eudaminae

Spreadwing Skippers

Se posan con las alas abiertas, muchas tienen colas y puntos o rayas en las alas delanteras.

Sit with wings open, many have tails and spots or stripes on the forewing.



Astraptes alardus

TX-PE



Astraptes alardus

TX-PE



Astraptes alardus

TX-PE



Astraptes alardus

TX-PE



Autochton longipennis

MX-BR



Autochton longipennis

MX-BR



Autochton longipennis

MX-BR



Autochton zarex

MX-AR



Autochton zarex

MX-AR



Autochton zarex MX-AR



Autochton zarex MX-AR



Autochton zarex MX-AR



Chioides catillus CR-PE



Chioides catillus CR-PE



Chioides catillus CR-PE



Epargyreus socus MX-BO



Epargyreus socus MX-BO



Phanus ecitonorum CR-BR



Phanus ecitonorum CR-BR



Phanus ecitonorum CR-BR



Phanus obscurior obscurior MX-CO



Phocides vulcanides CO



Spathilepia clonius Tx-AR



Spathilepia clonius Tx-AR



Spathilepia clonius Tx-AR



Spathilepia clonius Tx-AR



Spathilepia clonius Tx-AR



Spathilepia clonius Tx-AR



Spathilepia clonius Tx-AR



Typhedanus optica optica O-PE, GU



Typhedanus optica optica O-PE, GU



Urbanus dorantes dorantes US-AR



Urbanus dorantes dorantes US-AR



Urbanus dorantes dorantes US-AR



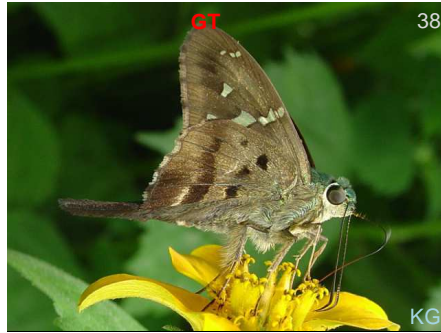
Urbanus dorantes dorantes US-AR



Urbanus esmeraldus MX-PE



Urbanus esmeraldus MX-PE



Urbanus esmeraldus MX-PE



Urbanus esmeraldus MX-PE



Urbanus esmeraldus MX-PE



Urbanus simplicius Tx-AR



Urbanus simplicius Tx-AR



Urbanus simplicius Tx-AR



Urbanus simplicius Tx-AR



Urbanus simplicius Tx-AR



Urbanus tanna Tx-GU



Urbanus tanna Tx-GU



Urbanus tanna Tx-GU



Urbanus tanna Tx-GU



Urbanus teleus Tx-AR



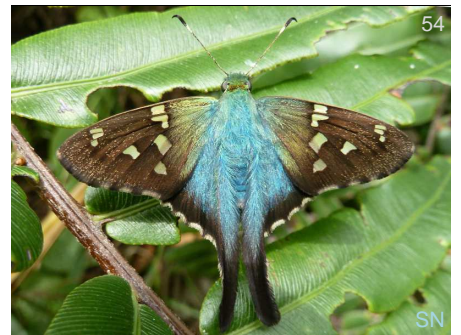
Urbanus teleus Tx-AR



Urbanus teleus Tx-AR



Urbanus viterboana MX-EC



Urbanus viterboana MX-EC



Urbanus viterboana MX-EC



Urbanus viterboana MX-EC



Urbanus viterboana MX-EC



Urbanus viterboana MX-EC

Pyrginae

Spreadwing Skippers

Se posan con las alas abiertas, en la tribu Pyrrhopigine muchos tienen punta roja en el abdomen.

Tribe Pyrrhopygini/Golf-club Skippers or Firetips – sit with wings open, some have red tips to abdomen. Tip of antennae bent over at 90 degree angle, like a golf club. Powerful fliers, strong bodies and wings, can buzz you. Some very colorful. Other spr



Elbella azeta azeta VZ-BR



Elbella azeta azeta VZ-BR



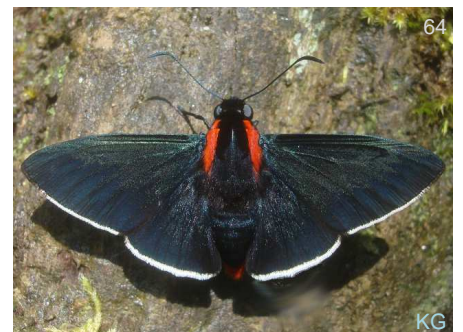
Elbella scylla MX-CO



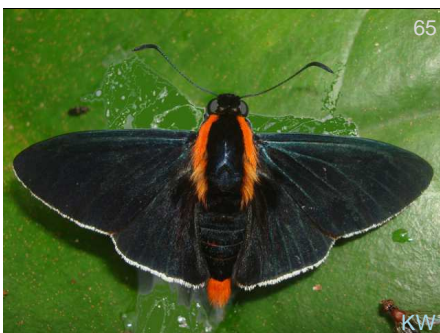
Elbella scylla MX-CO



Myscelus phoronis phoronis GT-BO



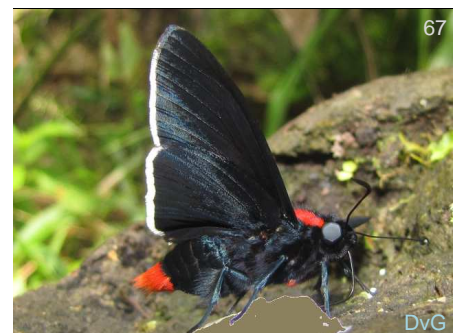
Pyrrhopyge papius papius VZ-PE



Pyrrhopyge papius papius VZ-PE



Pyrrhopyge papius papius VZ-PE



Pyrrhopyge papius papius VZ-PE



Pyrrhopyge phidias phidias CO-PG 8B



Pyrrhopyge phidias phidias CO-PG 8B



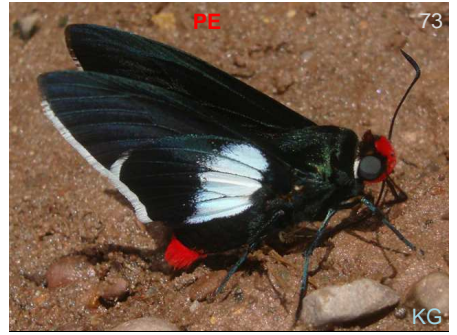
Pyrrhopyge phidias phidias CO-PG 8B



Pyrrhopyge phidias phidias CO-PG 8B



Pyrrhopyge phidias phidias CO-PG 8B



Pyrrhopyge phidias phidias CO-PG 8B



Pyrrhopyge phidias phidias CO-PG 8B



Pyrrhopyge phidias phidias CO-PG 8B



Pyrrhopyge phidias phidias CO-PG 8B



Celaenorrhinus eligius eligius CR-AR 8B



Celaenorrhinus eligius eligius CR-AR 8B



Bolla atahuallpai PN-AR 8B



Bolla atahuallpai

PN-AR



Gorgopas chlorocephala chlorocephala

NI-BO



Gorgopas chlorocephala chlorocephala

NI-BO



Gorgopas chlorocephala chlorocephala

NI-BO



Gorgopas chlorocephala chlorocephala

NI-BO



Nisoniades sp. Santamaria



Noctuana haematospila

VZ-PR



Noctuana haematospila

VZ-PR



Noctuana haematospila

VZ-PR



Noctuana haematospila

VZ-PR



Noctuana haematospila

VZ-PR



Noctuana haematospila

VZ-PR



Noctuana noctua PN-PR



Noctuana noctua PN-PR



Noctuana noctua PN-PR



Noctuana noctua PN-PR



Polycctor fera falla CO-VZ



Staphylus lizeri CO-BO



Staphylus lizeri CO-BO



Staphylus lizeri CO-BO



Staphylus lizeri CO-BO



Staphylus vulgata MX-AR



Staphylus vulgata MX-AR



Anastrus nearis narva PN-BO



Camptopleura termon CO-PE



Camptopleura termon CO-PE



Ebrietas anacreon anacreon MX-AR



Ebrietas anacreon anacreon MX-AR



Ebrietas anacreon anacreon MX-AR



Ebrietas anacreon leucophaea CO-BR



Ebrietas anacreon leucophaea CO-BR



Ebrietas anacreon leucophaea CO-BR



Ebrietas evanidus MX-PE



Ebrietas evanidus MX-PE



Ebrietas infanda CO-BR



Ebrietas infanda CO-BR



Gorythion begga begga CO-BR



Gorythion begga begga CO-BR



Gorythion begga begga CO-BR



Gorythion begga begga CO-BR



Gorythion begga begga CO-BR



Gorythion begga begga CO-BR



Gorythion begga begga CO-BR



Gorythion plautia ♀ ?-SU, BR



Gorythion plautia ♀ ?-SU, BR



Mylon cajus cajus CO-BR



Mylon cajus cajus CO-BR



Mylon cajus cajus CO-BR



Mylon cajus cajus CO-BR PB



Mylon cajus cajus CO-BR KG



Mylon lassia MX-GU BB



Mylon lassia MX-GU BB



Mylon lassia MX-GU Jpe



Mylon lassia MX-GU BB



Mylon zephus zephus CO-VZ KG



Mylon zephus zephus CO-VZ DW



Potamanaxas effusa effusa O-PE, GU DvG



Potamanaxas effusa effusa O-PE, GU SS



Potamanaxas hirta hirta CO-BO BB



Potamanaxas hirta hirta CO-BO FM



Potamanaxas hirta hirta CO-BO



Potamanaxas hirta hirta CO-BO



Potamanaxas hirta hirta CO-BO



Sostrata festiva PN-BR



Achlyodes pallida Tx-BO



Achlyodes pallida Tx-BO



Achlyodes pallida Tx-BO



Achlyodes pallida Tx-BO



Achlyodes pallida Tx-BO



Aethilla memmius VZ-CO



Aethilla memmius VZ-CO



Aethilla memmius VZ-CO



152

Eantis thraso

Chia-AR



153

Eantis thraso

Chia-AR



154

Eantis thraso

Chia-AR



155

Eantis thraso

Chia-AR



156

Eantis thraso

Chia-AR



157

Ouleus fridericus

CO-BR



158

Ouleus fridericus

CO-BR



159

Ouleus fridericus

CO-BR



160

Ouleus fridericus

CO-BR



161

Ouleus fridericus

CO-BR



162

Quadrus lugubris ophia

CO-VZ



163

Quadrus lugubris ophia

CO-VZ



Quadrus truncata CO-BO



Quadrus truncata CO-BO



Quadrus truncata CO-BO



Quadrus truncata CO-BO



Quadrus truncata CO-BO



Quadrus truncata CO-BO



Quadrus truncata CO-BO



Quadrus truncata CO-BO



Anisochoria pedalioidina polysticta CR-GU



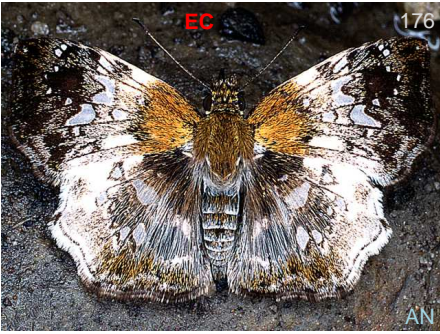
Anisochoria pedalioidina polysticta CR-GU



Anisochoria pedalioidina polysticta CR-GU



Anisochoria pedalioidina polysticta CR-GU



Dideaus ambata CO-EC



Dideaus variegata CO-BR



Eracon lachesis MX-CO



Heliopetes alana MX-AR



Heliopetes alana MX-AR



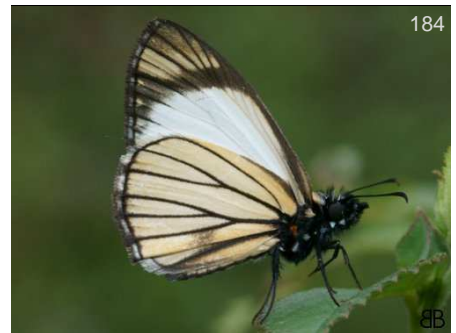
Heliopetes alana MX-AR



Heliopetes alana MX-AR



Heliopetes alana MX-AR



Heliopetes alana MX-AR



Pyrgus adepta MX-VZ



Pyrgus adepta MX-VZ



Pyrgus adepta MX-VZ



188

BB

Pyrgus adeptus

MX-VZ



189

BB

Pyrgus adeptus

MX-VZ



190

BB

Pyrgus adeptus

MX-VZ



191

BB

Pyrgus adeptus

MX-VZ



192

BB

Pyrgus adeptus

MX-VZ



193

DvG

Pyrgus adeptus

MX-VZ



194

BB

Pyrgus orcus

MX-AR



195

BB

Pyrgus orcus

MX-AR



196

BB

Pyrgus orcus

MX-AR



197

BB

Pyrgus orcus

MX-AR



198

BB

Pyrgus orcus

MX-AR



199

PB

Pyrgus orcus

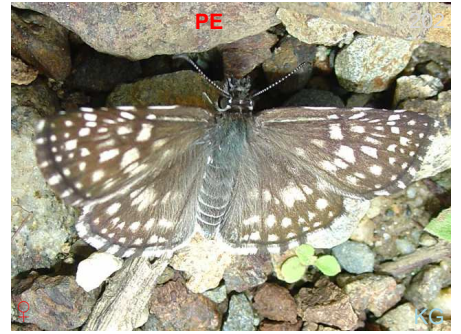
MX-AR



Pyrgus orcus MX-AR



Pyrgus orcus MX-AR



Pyrgus orcus MX-AR



Pyrgus orcus MX-AR



Pyrgus orcus MX-AR



Pyrgus orcus MX-AR



Trina geometrina geometrina O-VZ-PE



Trina geometrina geometrina O-VZ-PE



Trina geometrina geometrina O-VZ-PE



Trina geometrina geometrina O-VZ-PE



Xenophanes tryxus Tx-AR



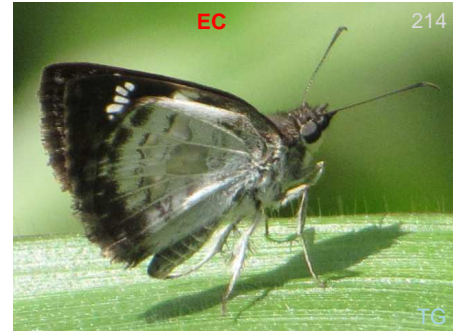
Xenophanes tryxus Tx-AR



Xenophanes tryxus Tx-AR



Xenophanes tryxus Tx-AR



Xenophanes tryxus Tx-AR



Xenophanes tryxus Tx-AR

Heteropterinae

Skipperlings

The Dallas – most sit with forewings up, like grass skippers. Often have large gold or orange patterns on underside. Found on wet dirt at higher elevations, some very high. Not in the lowlands. Many very confusing species.



Dalla ibhara VZ-BO



Dalla ibhara VZ-BO



Dalla ibhara VZ-BO



Dalla ibhara VZ-BO



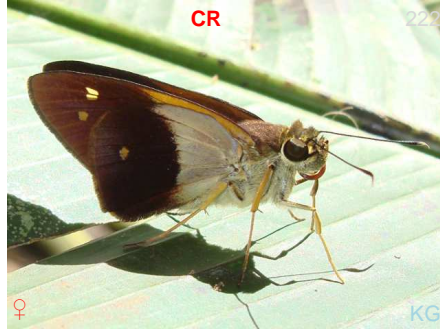
Dalla ibhara VZ-BO

Hesperiinae
Grass Skippers

Sit in 'jet plane' position, with forewings straight up and hindwings out flat. Many are orange and black, or brown. Many can only be separated by genitalic dissection. Small butterflies, some like flowers in gardens, some like shaded forest.



Saliana esperi esperi MX-BR



Saliana esperi esperi MX-BR



Saliana esperi esperi MX-BR



Saliana morsa PN-Amz



Saliana morsa PN-Amz



Saliana morsa PN-Amz



Saliana morsa PN-Amz



Saliana placens CR-EC



Saliana placens CR-EC



Saliana placens CR-EC



Saliana placens CR-EC



Saliana placens CR-EC



233

DvG

Saliانا placens

CR-EC



234

KG

Saliانا placens

CR-EC



235

EC

SS

Thracides arcalaus

MX-Amz



236

DW

Thracides arcalaus

MX-Amz



237

e

BB

Thracides nida

CO



238

BB

Thracides nida

CO



239

e

BB

Thracides nida

CO



240

e

BB

Thracides nida

CO



241

e

BB

Thracides nida

CO



242

BB

Apaustus gracilis gracilis

NI-EC



243

KG

Arita arita

MX-AR



244

BB

Callimormus corades

∇CO-BR



Callimormus corades ♀?CO-BR



Callimormus corades ♀?CO-BR



Cobalopsis nero MX-PE



Cobalopsis nero MX-PE



Cobalopsis nero MX-PE



Cobalopsis nero MX-PE



Cobalopsis nero MX-PE



Cobalopsis nero MX-PE



Cobalopsis nero MX-PE



Cymaenes laureolus laureolus MX-EC



Enosis angularis CO-SU



Enosis angularis CO-SU



Enosis angularis CO-SU



Niconiades sp. Santamaria



Niconiades sp. Santamaria



Vehilus vetula NI-BR



Vehilus vetula NI-BR



Vettius coryna coryna MX-BR



Vettius coryna coryna MX-BR



Vettius coryna coryna MX-BR



Vettius lafrenaye pica MX-BR



Vettius phyllus phyllus PN-BR



Vettius phyllus phyllus PN-BR



Vettius phyllus phyllus PN-BR



Conga chydaea Tx-AR



Conga chydaea Tx-AR



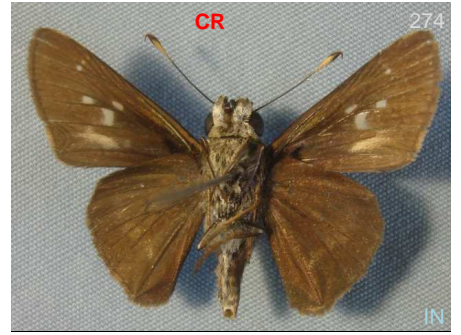
Conga chydaea Tx-AR



Conga chydaea Tx-AR



Conga chydaea Tx-AR



Conga chydaea Tx-AR



Decinea neroides neroides CO-EC



Decinea neroides neroides CO-EC



Molo mango CR-BR



Molo mango CR-BR



Molo mango CR-BR



Molo mango CR-BR



Molo mango CR-BR



Nyctelius nyctelius nyctelius Tx-AR



Nyctelius nyctelius nyctelius Tx-AR



Nyctelius nyctelius nyctelius Tx-AR



Nyctelius nyctelius nyctelius Tx-AR



Nyctelius nyctelius nyctelius Tx-AR



Nyctelius nyctelius nyctelius Tx-AR



Nyctelius nyctelius nyctelius Tx-AR



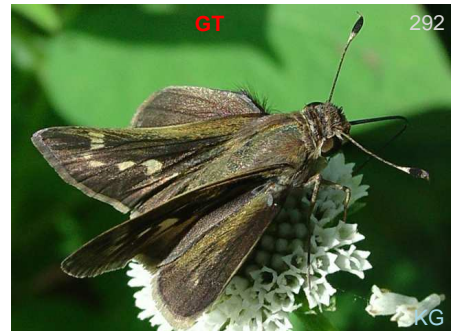
Nyctelius nyctelius nyctelius Tx-AR



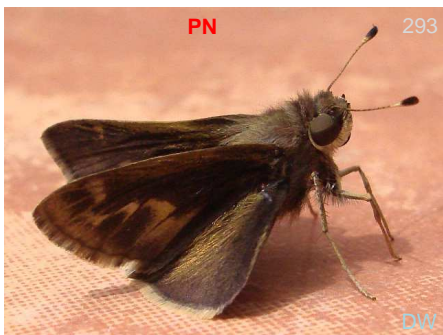
Pompeius pompeius MX-AR



Pompeius pompeius MX-AR



Pompeius pompeius MX-AR



Pompeius pompeius MX-AR



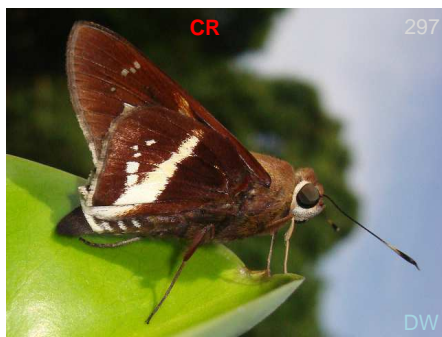
Pompeius pompeius MX-AR



Pompeius pompeius MX-AR



Pompeius pompeius MX-AR



Xeniades orchamus orchamus MX-AR



Xeniades orchamus orchamus MX-AR

Papilionidae

Swallowtails

Papilioninae

Swallowtails



Heraclides anchisiades idaeus US-VZ



Heraclides anchisiades idaeus US-VZ



Heraclides anchisiades idaeus US-VZ



Mimoides xeniades halex E CO



Mimoides xeniades halex E CO



Parides erithalion erithalion arien-CO



Parides erithalion erithalion arien-CO



Parides erithalion erithalion arien-CO



Parides neophilus olivencius N VZ-BO



Parides neophilus olivencius N VZ-BO



Parides neophilus olivencius W VZ-BO



Parides neophilus olivencius N VZ-BO



Parides neophilus olivencius

N VZ-BO

Pieridae

Whites and Sulphurs

Dismorphiinae

Mimic-Whites

Odd shaped forewings, smaller butterflies, prefer shaded areas. They are pale yellow or white with black marking on the dorsals. Females have rounder forewings. Sit with wings closed.



Dismorphia crisia foedora



Dismorphia crisia foedora



Dismorphia crisia foedora



Dismorphia crisia foedora



Dismorphia crisia foedora



Dismorphia crisia foedora



Dismorphia crisia foedora



Dismorphia crisia foedora



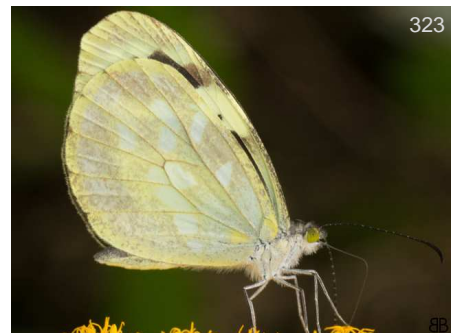
Dismorphia crisia foedora



Dismorphia crisia foedora



Dismorphia crisia foedora



Dismorphia crisia foedora



Dismorphia thermesia



Dismorphia thermesia



Dismorphia thermesia



Dismorphia thermesia



Dismorphia thermesia



Enantia lina



Enantia lina



Enantia lina



Enantia lina



Lieinix nemesis nemesis



Lieinix nemesis nemesis



Lieinix nemesis nemesis



Lieinix nemesis nemesis



Lieinix nemesis nemesis



Pseudopieris nehemia



Pseudopieris nehemia



Pseudopieris nehemia



Pseudopieris nehemia



Pseudopieris nehemia

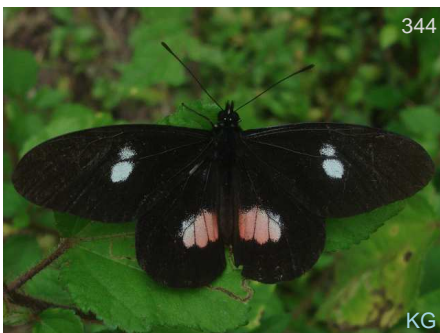


Pseudopieris nehemia

Pierinae

Whites

Variable, many are white but some are black with narrow white, yellow or even red patches. Many species of *Catasticta* are very difficult to separate from a live ventral photo. They like to come to wet sand or edges of flowing water. Sit with wings closed



Archonias brassolis critias



Archonias brassolis critias



Ascia monuste orseis



Ascia monuste orseis



Ascia monuste orseis



Ascia monuste orseis



Ascia monuste orseis



Ascia monuste orseis



Ascia monuste orseis



Catasticta flisa dilutior



Catasticta flisa dilutior



Catasticta flisa dilutior



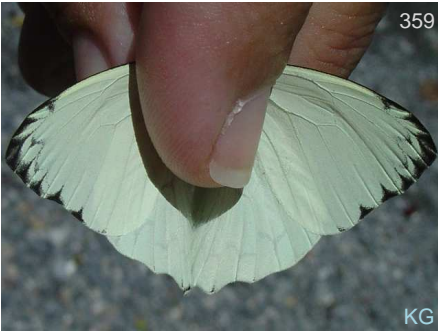
Cunizza hirlanda serda



Cunizza hirlanda serda



Cunizza hirlanda serda



Hesperocharis marchalii



Hesperocharis marchalii



Hesperocharis marchalii



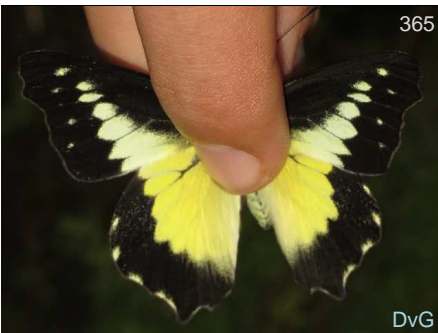
Hesperocharis marchalii



Leodonta dysoni



Leodonta dysoni



Leodonta dysoni batzebina



Leodonta dysoni batzebina



Leodonta tellane intermedia



Leodonta tellane intermedia



Leodonta tellane intermedia



Leodonta tellane intermedia



Leodonta tellane intermedia



Leodonta tellane intermedia



Leodonta tellane intermedia



Leptophobia aripa aripa



Leptophobia aripa aripa



Leptophobia aripa aripa



Leptophobia aripa aripa



Leptophobia philoma



Leptophobia philoma



Leptophobia tovaria subflavescens



Leptophobia tovaria subflavescens



Leptophobia tovaria subflavescens



Leptophobia tovaria subflavescens



Leptophobia tovaria subflavescens



Leptophobia tovaria subflavescens



Leptophobia tovaria subflavescens



Melete leucadia



Melete leucanthe leucanthe



Melete leucanthe leucanthe



Melete leucanthe leucanthe



Melete leucanthe leucanthe



Melete leucanthe leucanthe



Melete lycimnia reducta



Melete lycimnia reducta



Melete lycimnia reducta



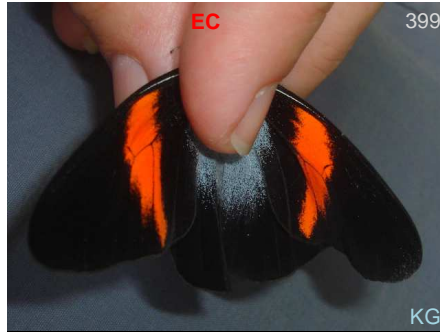
Melete lycimnia reducta



Melete lycimnia reducta



Melete lycimnia reducta



Pereute leucodrosime leucodrosime



Pereute leucodrosime leucodrosime



Pereute leucodrosime leucodrosime



Pereute leucodrosime leucodrosime



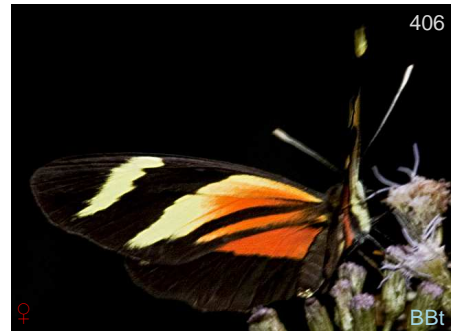
Pereute leucodrosime leucodrosime



Perrhybris lorena lorena



Perrhybris lorena lorena



Perrhybris lorena lorena



Perrhybris lorena lorena



Perrhybris lorena lorena



Perrhybris lorena lorena

Coliadinae

Sulphurs

Some large, but most are medium to smaller sizes. Common in meadows and gardens, roadside edges. Difficult to separate to species just on ventral live photos, you often need to see the pattern of the black on the edges of the upper wings. Sit with wings c



Anteos menippe



Anteos menippe



Anteos menippe



Anteos menippe



Anteos menippe



Anteos menippe



Anteos menippe



Eurema albula albula



Eurema arbela gratiosa



419

Eurema arbela gratiosa



420

Eurema arbela gratiosa



421

Eurema arbela gratiosa



422

Eurema arbela gratiosa



423

Eurema arbela gratiosa



424

Eurema arbela gratiosa



425

Eurema arbela gratiosa



426

Eurema arbela gratiosa



427

Eurema daira daira



428

Eurema daira daira



429

Eurema daira daira



430

Eurema daira daira



Eurema daira daira



Eurema elathea vitellina



Eurema elathea vitellina



Eurema elathea vitellina



Eurema elathea vitellina



Eurema phiale columbia



Eurema phiale columbia



Eurema phiale columbia



Eurema salome salome



Eurema salome salome



Eurema salome salome



Eurema salome salome



Eurema salome salome



Eurema salome salome



Eurema salome salome



Eurema xantochlora xantochlora



Eurema xantochlora xantochlora



Eurema xantochlora xantochlora



Eurema xantochlora xantochlora



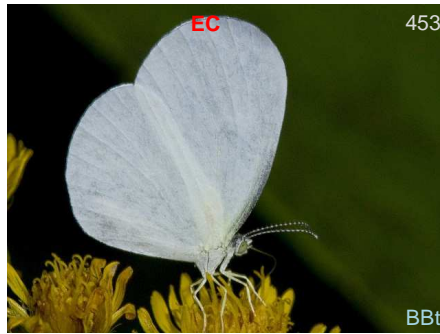
Eurema xantochlora xantochlora



Eurema xantochlora xantochlora



Eurema xantochlora xantochlora



Leucidia brephos



Leucidia brephos



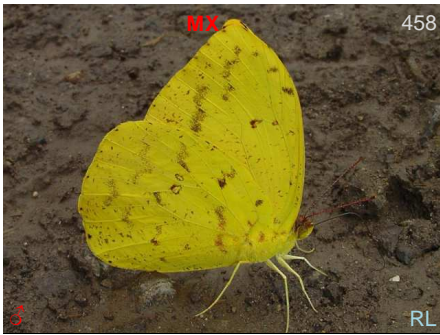
Leucidia brephos



Phoebis argante argante



Phoebis argante argante



Phoebis argante argante



Phoebis argante argante



Phoebis argante argante



Phoebis argante argante



Phoebis argante argante



Phoebis neocypris rurina



Phoebis neocypris rurina



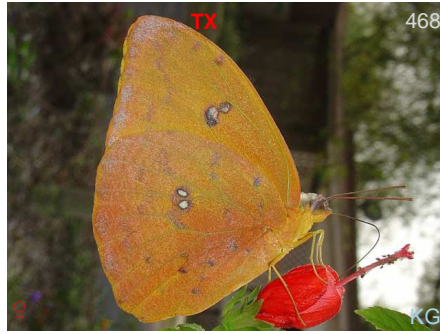
Phoebis neocypris rurina



Phoebis philea philea



Phoebis philea philea



Phoebis philea philea



Phoebis philea philea



Phoebis philea philea



Phoebis philea philea



Phoebis philea philea



Phoebis sennae marcellina



Phoebis sennae marcellina



Phoebis sennae marcellina



Phoebis sennae marcellina



Phoebis sennae marcellina

Riodinidae

Metalmarks

Riodininae

Metalmarks



478

KK

Ithomiola floralis cascella

CO-EC



479

KG

Ithomiola floralis cascella

CO-EC



480

BB

Leucochimona icare



481

KW

Leucochimona icare



482

KG

Leucochimona icare



483

BB

Leucochimona icare



484

KWs

Leucochimona icare



485

CO

Mesosemia mevania mevania



486

CO

Mesosemia mevania mevania



487

BB

Mesosemia mevania mevania

CO



488

DvG

Mesosemia mevania mevania

CO



489

CO

Mesosemia mevania mevania



Mesosemia telegone telegone



Mesosemia telegone telegone



Mesosemia telegone telegone



Mesosemia telegone telegone



Mesosemia telegone telegone



Mesosemia telegone telegone



Mesosemia telegone telegone



Mesosemia telegone telegone



Mesosemia telegone telegone



Mesosemia telegone telegone



Mesosemia telegone telegone



Mesosemia telegone telegone



Napaea eucharila



Perophtalma tullius



Perophtalma tullius



Perophtalma tullius



Perophtalma tullius



Perophtalma tullius



Perophtalma tullius



Perophtalma tullius



Perophtalma tullius



Teratophtalma maenades maenades



Teratophtalma maenades maenades



Teratophtalma maenades maenades



Alesa amesis 'E,BR,SU



Alesa amesis 'E,BR,SU



Alesa amesis 'E,BR,SU



Alesa amesis 'E,BR,SU



Eurybia dardus annulata CO-PE



Eurybia franciscana O-PE,SU



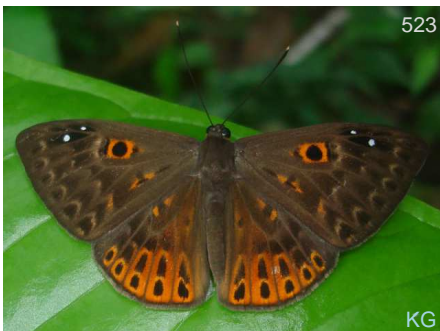
Eurybia nicaeus erythinosa CO-EC



Eurybia nicaeus erythinosa CO-EC



Eurybia nicaeus erythinosa CO-EC



Eurybia nicaeus erythinosa CO-EC



Eurybia patrona patrona CO



Eurybia patrona patrona CO



Eurybia patrona patrona CO



Eurybia patrona patrona CO



Amarynthis meneria CO-BR



Amarynthis meneria CO-BR



Amarynthis meneria CO-BR



Amarynthis meneria CO-BR



Amarynthis meneria CO-BR



Ancylyris aulestes aulestes



Ancylyris aulestes aulestes



Ancylyris aulestes aulestes



Ancylyris aulestes aulestes



Ancylyris aulestes aulestes



Ancyluris aulestes aulestes



Ancyluris aulestes aulestes



Ancyluris aulestes aulestes



Ancyluris aulestes jocularis



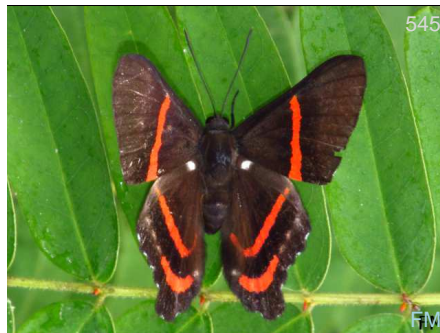
Ancyluris aulestes jocularis



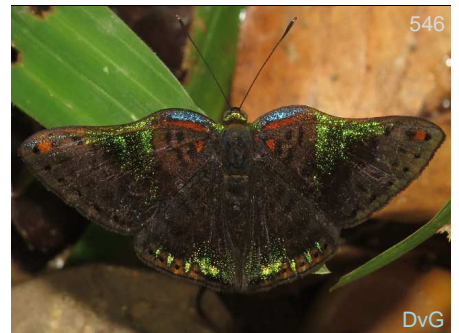
Ancyluris aulestes jocularis



Ancyluris meliboeus eudaemon



Ancyluris meliboeus eudaemon



Caria trochilus



Caria trochilus



Chamaelimnas briola briola



Charis anius



Charis anius HN-BR



Charis anius HN-BR



Crocozona coecias arcuata CO-PE



Crocozona coecias arcuata CO-PE



Crocozona coecias arcuata CO-PE



Crocozona coecias arcuata CO-PE



Isapis agyrtus falcis CO



Isapis agyrtus falcis CO



Isapis agyrtus falcis CO



Isapis agyrtus falcis CO



Isapis agyrtus falcis CO



Lasaia moeros CO-PE



Melanis electron BL-BR 8B



Melanis electron BL-BR 8B



Melanis electron BL-BR DvG



Melanis electron BL-BR DvG



Melanis electron BL-BR DvG



Melanis electron BL-BR DvG



Melanis electron BL-BR 8B



Melanis marathon assimulata CO DvG



Melanis marathon marathon CO FM



Melanis marathon marathon CO 8B



Melanis marathon marathon CO FM



Melanis marathon marathon CO 8B



Necyria bellona saundersii



Necyria duellona



Necyria duellona



Parcella amarynthina



Parcella amarynthina



Parcella amarynthina



Parcella amarynthina



Parcella amarynthina



Parcella amarynthina



Parcella amarynthina



Rhetus dysonii caligosus



Rhetus dysonii caligosus



Rhetus dysonii caligosus



Rhetus dysonii caligosus



Rhetus dysonii caligosus



Rhetus dysonii caligosus



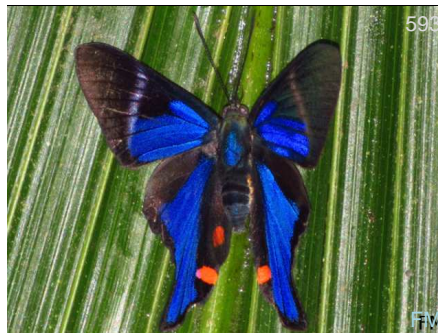
Rhetus periander



Rhetus periander



Rhetus periander



Rhetus periander



Rhetus periander



Rhetus periander



Rhetus periander



Rhetus periander



Rhetus periander



Rhetus periander



Rhetus periander



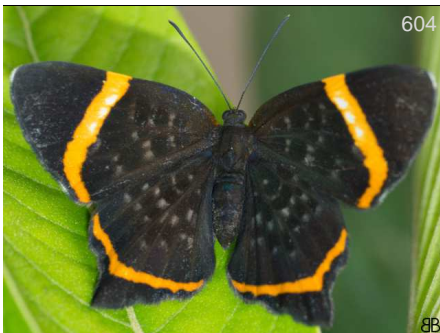
Rhetus periander



Riodina lysippus lysias



Riodina lysippus lysias



Riodina lysippus lysias



Riodina lysippus lysias



Siseme alectryyo tantilla



Siseme alectryyo tantilla



Siseme aristoteles minerva



Siseme aristoteles minerva



Siseme pallas pallas



Siseme pallas pallas



Sarota myrtea



Sarota myrtea



Sarota myrtea



Emesis aurimna

MX-CO



Emesis aurimna

MX-CO



Emesis aurimna

MX-CO



Emesis aurimna

MX-CO



Emesis aurimna

MX-CO



Emesis aurimna

MX-CO



Emesis cypria guppyi



Emesis cypria guppyi



Emesis cypria guppyi



Emesis cypria guppyi



Emesis cypria guppyi



Emesis cypria guppyi



Emesis cypria guppyi



Emesis fastidiosa



Emesis lucinda



Emesis lucinda



Emesis lucinda



Emesis mandana mandana



Emesis mandana mandana



Emesis mandana mandana CR-BR



Emesis mandana mandana CR-BR



Emesis mandana mandana CR-BR



Emesis mandana mandana CR-BR



Emesis mandana mandana CR-BR



Emesis mandana mandana CR-BR



Emesis tegula MX-CO



Emesis tegula MX-CO



Emesis tegula MX-CO



Emesis tegula MX-CO



Emesis tegula MX-CO



Emesis temesa CO-PE



Emesis temesa CO-PE



Emesis temesa CO-PE



Emesis temesa CO-PE



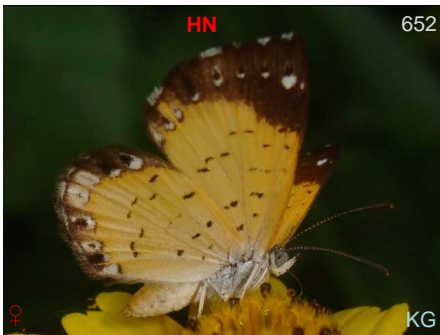
Calospila cilissa HN-CO



Calospila cilissa HN-CO



Calospila cilissa HN-CO



Calospila cilissa HN-CO



Calospila emylius O-BO,BR



Calospila emylius O-BO,BR



Calospila emylius O-BO,BR



Calospila emylius O-BO,BR



Calospila emylius O-BO,BR



Nymphidium ascolia olivencius



Nymphidium lisimon lisimon



Nymphidium lisimon lisimon



Setabis myrtis gelasine



Synargis ochra



Theope nycteis



Theope nycteis

Euselasiinae

Metalmarks

Se posan casi siempre por debajo de las hojas en posición hacia abajo. De colores cafés y cremas.

They sit in the leaves in upright position. Brown and cream colors.



Euselasia bettina



Euselasia bettina



Euselasia bettina



Euselasia bettina NI-EC



Euselasia bettina NI-EC



Euselasia corduena CR-BO



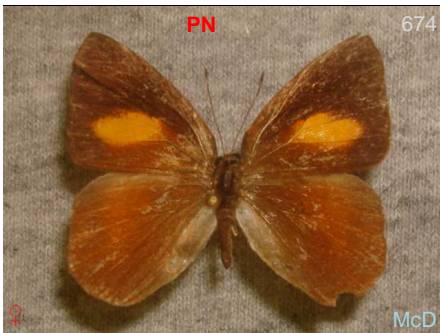
Euselasia corduena CR-BO



Euselasia corduena CR-BO



Euselasia cucuta CO-VZ



Euselasia eucrates IX-VZ,EC



Euselasia eucrates IX-VZ,EC



Euselasia eucrates IX-VZ,EC



Euselasia eumedia O-BR,SU



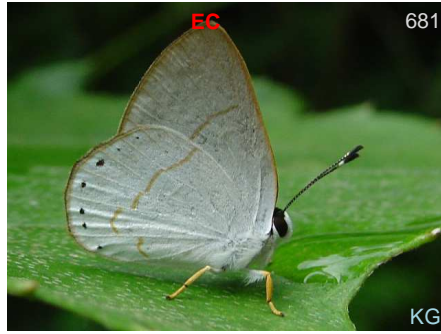
Euselasia eumedia O-BR,SU



Euselasia eusepus PN-BR



Euselasia eusepus PN-BR



Euselasia eusepus PN-BR



Euselasia eusepus PN-BR



Euselasia eusepus PN-BR



Euselasia melaphaea O-SU-BR



Euselasia melaphaea O-SU-BR



Euselasia melaphaea O-SU-BR



Euselasia orfita CO



Euselasia orfita CO



Euselasia subargentea CR-CO



Hades noctula MX-VZ

Lycaenidae

Blues and Hairstreaks

Theclinae

Hairstreaks



Contrafacia imma MX-BR



Contrafacia imma MX-BR



Arawacus separata CO-PG



Arawacus separata CO-PG



Arumecla aruma CO-BR



Brangas getus MX-BR



Calycopis bactra NI-VZ



Janthecla sp santa maria



Laothus gibberosa CO-PE



Laothus gibberosa CO-PE



Laothus gibberosa CO-PE



Laothus gibberosa CO-PE



Laothus gibberosa CO-PE



Micandra platyptera CR-BO



Micandra platyptera CR-BO



Micandra platyptera CR-BO



Micandra platyptera CR-BO



Ministrymon una una CO-BR



Ministrymon una una CO-BR



Ministrymon una una CO-BR



Ministrymon una una CO-BR



Ministrymon una una CO-BR



Nicolaea dolium MX-BR



Rekoa meton MX-PG



Rekoa meton MX-PG



Rekoa meton MX-PG



Strymon gabatha MX-PE



Strymon gabatha MX-PE



Strymon gabatha MX-PE



Strymon gabatha MX-PE



Theritas mavors MX-GU



Theritas mavors MX-GU



Theritas mavors MX-GU



Theritas mavors MX-GU



Thestius meridionalis VZ-BO



Thestius meridionalis VZ-BO



Thestius meridionalis VZ-BO



Thestius sp. santa maria



Tmolus echion MX-BR



Tmolus echion MX-BR



Tmolus echion MX-BR



Tmolus echion MX-BR



Tmolus echion MX-BR



Tmolus echion MX-BR



Tmolus echion MX-BR



Tmolus echion MX-BR



Tmolus echion MX-BR



Tmolus echion MX-BR



Tmolus echion MX-BR



Ziegleria hesperitis MX-BR

Polyommatainae

Blues



Cupido comyntas texana TX-EC



Cupido comyntas texana TX-EC



Cupido comyntas texana TX-EC



Cupido comyntas texana TX-EC



Cupido comyntas texana TX-EC



Cupido comyntas texana TX-EC



Zizula cyna US-PE?



Zizula cyna US-PE?



Zizula cyna US-PE?



Zizula cyna

US-PE?

Nymphalidae

Brushfoots

Heliconiinae

Longwings



Actinote pellenea perfulva CO



Actinote pellenea perfulva CO



Altinote dicaeus ozinta CO-VZ



Altinote dicaeus ozinta CO-VZ



Altinote stratonice stratonice CO-EC



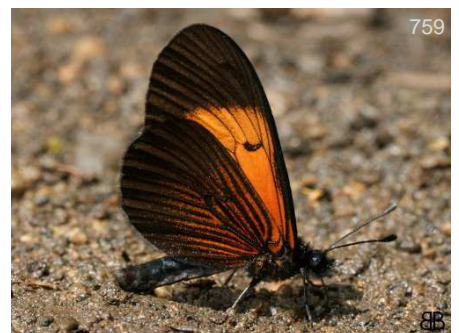
Altinote stratonice stratonice CO-EC



Altinote stratonice stratonice CO-EC



Altinote stratonice stratonice CO-EC



Altinote stratonice stratonice CO-EC



Altinote stratonice stratonice CO-EC



Dryas iulia iulia



Dryas iulia iulia



Dryas iulia iulia



Dryas iulia iulia



Dryas iulia iulia



Dryas iulia iulia



Eueides aliphera aliphera



Eueides aliphera aliphera



Eueides aliphera aliphera



Eueides aliphera aliphera



Eueides aliphera aliphera



Heliconius clysonymus clysonymus



Heliconius clysonymus clysonymus



Heliconius clysonymus clysonymus



Heliconius clysonymus clysonymus



Heliconius clysonymus clysonymus



Heliconius erato hydara



Heliconius erato hydara



Heliconius heurippa



Heliconius heurippa



Heliconius melpomene melpomene



Heliconius melpomene melpomene



Heliconius melpomene melpomene



Heliconius melpomene melpomene



Heliconius melpomene melpomene



Heliconius numata messene



Heliconius numata messene



Heliconius numata messene



Heliconius sara sara



Heliconius sara sara



Heliconius sara sara



Heliconius sara sara



Heliconius sara sara



Heliconius sara sara



Laparus doris doris



Laparus doris doris



Laparus doris doris



Laparus doris doris



Laparus doris doris



Laparus doris doris



Laparus doris doris



Laparus doris doris



Laparus doris doris



Laparus doris doris



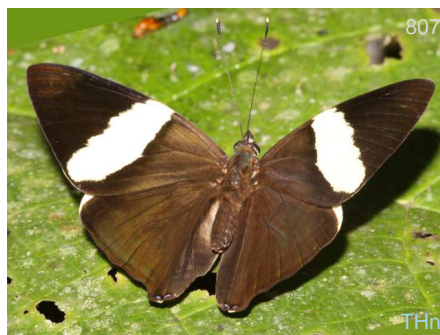
Laparus doris doris

Nymphalinae
Brushfoots



Colobura dirce dirce

MX-AR



Colobura dirce dirce

MX-AR



Colobura dirce dirce

MX-AR



Hypanartia dione dione



Hypanartia dione dione



Hypanartia dione dione



Hypanartia dione dione



Hypanartia dione dione



Hypanartia lethe lethe



Hypanartia lethe lethe



Hypanartia lethe lethe



Tigridia acesta latifascia



Tigridia acesta latifascia



Anartia amathea amathea



Anartia amathea amathea



Anartia amathea amathea



Anartia amathea amathea



Anartia jatrophae jatrophae



Anartia jatrophae jatrophae



Anartia jatrophae jatrophae



Anartia jatrophae jatrophae



Metamorpha elissa elissa



Metamorpha elissa elissa



Metamorpha elissa elissa



Metamorpha elissa elissa



Siproeta epaphus epaphus



Siproeta epaphus epaphus



833

Anthanassa drusilla drusilla 'N-EC,VZ



834

Anthanassa drusilla drusilla 'N-EC,VZ



835

Anthanassa drusilla drusilla 'N-EC,VZ



836

Anthanassa drusilla drusilla 'N-EC,VZ



837

Anthanassa drusilla drusilla 'N-EC,VZ



838

Anthanassa drusilla drusilla 'N-EC,VZ



839

Castilia angusta CO-BO



840

Castilia angusta CO-BO



841

Castilia angusta CO-BO



842

Castilia eranites MX-VZ



843

Castilia eranites MX-VZ



844

Castilia eranites MX-VZ



Castilia eranites MX-VZ



Castilia eranites MX-VZ



Castilia eranites MX-VZ



Castilia ofella MX-VZ



Castilia ofella MX-VZ



Castilia ofella MX-VZ



Castilia ofella MX-VZ



Castilia ofella MX-VZ



Castilia ofella MX-VZ



Castilia ofella MX-VZ



Eresia clio clio MX-BR



Eresia clio clio MX-BR



Eresia clio clio MX-BR



Eresia letitia letitia CO-EC



Eresia letitia letitia CO-EC



Eresia polina VZ-BO



Eresia polina VZ-BO



Eresia polina VZ-BO



Eresia polina VZ-BO



Gnathotriche exclamationis exclamationis



Gnathotriche exclamationis exclamationis



Janatella leucodesma



Janatella leucodesma



Janatella leucodesma



Janatella leucodesma



Janatella leucodesma



Ortilia gentina



Tegosa anieta anieta



Tegosa anieta anieta



Tegosa anieta anieta



Tegosa anieta anieta



Tegosa anieta anieta



Tegosa anieta anieta



Tegosa nazaria



Tegosa nazaria



Telenassa delphia catenaria



Telenassa delphia catenaria



Telenassa jana



Telenassa jana

Limenitidinae

Sisters

Mainly africana y asiatica some Namerica



Adelpha alala negra

C CO-AR



Adelpha alala negra

C CO-AR



Adelpha cytherea olbia

CO-EC



Adelpha cytherea olbia

CO-EC



Adelpha cytherea olbia

CO-EC



Adelpha delinita delinita

PN-BO



Adelpha delinita delinita

PN-BO



Adelpha epione agilla

CO-BO



Adelpha epione agilla

CO-BO



Adelpha epione agilla CO-BO



Adelpha epione agilla CO-BO



Adelpha epione agilla CO-BO



Adelpha irmina VZ-BO



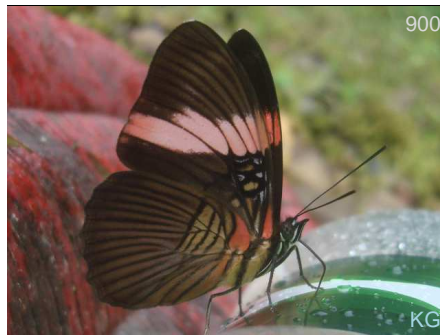
Adelpha irmina VZ-BO



Adelpha lycorias lara VZ-BO



Adelpha lycorias lara VZ-BO



Adelpha lycorias lara VZ-BO



Adelpha lycorias lara VZ-BO



Adelpha messana delphicola pe CoOR



Adelpha messana delphicola pe CoOR

Charaxinae

Leafwings

Larger butterflies, strong fliers, they usually sit with wings closed, then flash their wings open showing brilliant blue, purple or orange above. They look like dried leaves when wings are closed. They do not come to flowers, but like excrement, urine an



Hypna clytemnestra clytemnestra



Hypna clytemnestra clytemnestra



Memphis acidalia memphis

CO-BO



Memphis acidalia memphis

CO-BO



Memphis acidalia memphis

CO-BO



Memphis leonida leonida

CO?-BR



Memphis lineata

CO-BO



Memphis lineata

CO-BO



Memphis philumena chaeronea

CO



Memphis philumena chaeronea

CO



Memphis philumena chaeronea

CO



Memphis philumena chaeronea

CO



Archaeopreona amphimachus amphimachus



Archaeopreona amphimachus amphimachus



Prepona praeneste praeneste



Prepona praeneste praeneste

Apaturinae

Emperors

Only a few widespread species, usually bright blue triangle above, silver or brownish below. They like wet dirt and are strong fliers.



Doxocopa cyane mexicana



Doxocopa cyane mexicana



Doxocopa cyane mexicana



Doxocopa cyane mexicana



Doxocopa cyane mexicana



Doxocopa laurentia cherubina



Doxocopa laurentia cherubina



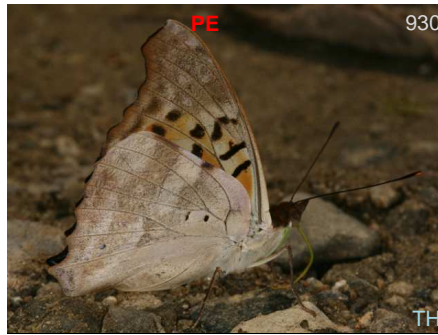
Doxocopa laurentia cherubina



Doxocopa laurentia cherubina



Doxocopa laurentia cherubina



Doxocopa laurentia cherubina



Doxocopa laurentia cherubina



Doxocopa zunilda felderi



Doxocopa zunilda felderi



Doxocopa zunilda felderi



Doxocopa zunilda felderi

Satyrinae

Satyrans, Morphos, and Owls



936

DW

Morpho achilles achilles



937

DW

Morpho helenor theodorus



938

FM

Morpho helenor theodorus



939

FM

Morpho helenor theodorus



940

DW

Morpho helenor theodorus



941

FM

Morpho menelaus lecromi



942

KG

Morpho menelaus lecromi



943

KG

Morpho menelaus lecromi



944

FM

Morpho menelaus lecromi



945

CR-BO

Caligo illioneus oberon



946

DvG

Caligo illioneus oberon



947

DvG

Caligo illioneus oberon



Caligo illioneus oberon CR-BO



Caligo illioneus oberon CR-BO



Caligo illioneus oberon CR-BO



Caligo illioneus oberon CR-BO



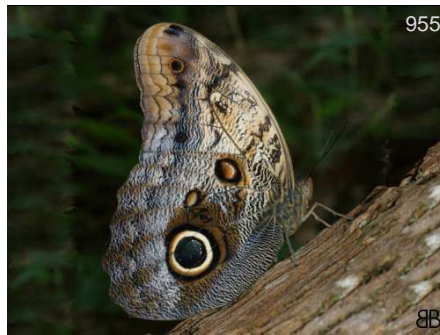
Caligo illioneus oberon CR-BO



Caligo telamonius menus CR-CO



Caligo telamonius menus CR-CO



Caligo telamonius menus CR-CO



Pierella lamia lamia



Pierella lamia lamia



Pierella lamia lamia



Chloreuptychia arnaca GT-BR



Chloreuptychia arnaca GT-BR



Chloreuptychia arnaca GT-BR



Chloreuptychia arnaca GT-BR



Chloreuptychia arnaca GT-BR



Cissia penelope CO-BR



Cissia penelope CO-BR



Cissia penelope CO-BR



Cissia penelope CO-BR



Cissia penelope CO-BR



Cissia penelope CO-BR



Euptychia hannemanni



Euptychia westwoodi



Euptychia westwoodi



Euptychia westwoodi



Euptychia westwoodi



Euptychia westwoodi



Euptychoides saturnus



Euptychoides saturnus



Euptychoides saturnus



Euptychoides saturnus



Hermeuptychia hermes



Hermeuptychia hermes



Hermeuptychia hermes



Hermeuptychia hermes



Hermeuptychia hermes



Hermeuptychia hermes



Hermeuptychia hermes



Hermeuptychia hermes



Hermeuptychia hermes



Hermeuptychia hermes



Magneuptychia libye



Magneuptychia libye



Megeuptychia antonoe



Megeuptychia antonoe



Oressinoma typhla typhla



Oressinoma typhla typhla



Oressinoma typhla typhla



Pareuptychia ocirrhoe



Pareuptychia ocirrhoe



Pareuptychia ocirrhoe



Pareuptychia ocirrhoe



Pareuptychia ocirrhoe



Pareuptychia ocirrhoe



Pareuptychia ocirrhoe



Taygetis laches



Taygetis laches



Taygetis laches

Danainae

Monarchs & Clearwings

Tribe Danaini/Monarchs – orange/rust colored butterflies, fairly good sized, famous North American migrants.

Tribe Ithomiini/Clearwings & Tigerwings – crystal or transparent winged, or orange and black striped. They usually fly in shaded areas, very slow!



Danaus gilippus US-BR



Danaus gilippus US-BR



Danaus gilippus US-BR



Danaus gilippus US-BR



Danaus gilippus US-BR



Lycorea halia atergatis No SoAm



Lycorea halia atergatis No SoAm



Lycorea halia atergatis No SoAm



Lycorea halia atergatis No SoAm



Lycorea halia atergatis No SoAm



Lycorea halia atergatis No SoAm



Lycorea ilione lamirus CO-PE



Lycorea ilione lamirus CO-PE



Lycorea ilione lamirus CO-PE



Lycorea ilione lamirus CO-PE



Lycorea ilione lamirus CO-PE



Ceratinia tutia IX-BO, BR



Ceratinia tutia X-BO, BR



Ceratinia tutia X-BO, BR



Ceratinia tutia IX-BO, BR



Ceratinia tutia X-BO, BR



Ceratinia tutia X-BO, BR



Ceratinia tutia IX-BO, BR



Ceratinia tutia X-BO, BR



Ceratinia tutia X-BO,BR



Ceratinia tutia IX-BO,BR



Ceratinia tutia X-BO,BR



Ceratinia tutia X-BO,BR



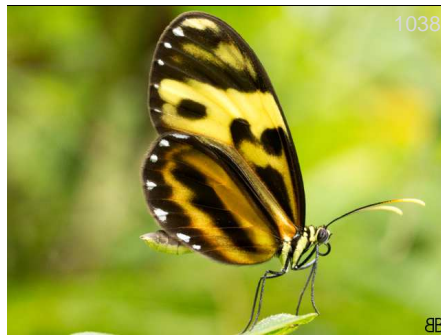
Ceratinia tutia IX-BO,BR



Ceratinia tutia X-BO,BR



Ceratinia tutia X-BO,BR



Ceratinia tutia IX-BO,BR



Ceratinia tutia X-BO,BR



Episcada salvinia apia CO



Episcada salvinia apia CO



Episcada salvinia apia CO



Episcada salvinia apia CO



Greta andromica andromica



Greta andromica andromica



Greta andromica andromica



Greta andromica andromica



Greta andromica andromica



Hyalyris ocna ocna



Hypoleria ocalea ocalea



Hypoleria ocalea ocalea



Hypoleria ocalea ocalea



Hypoleria ocalea ocalea



Hypoleria ocalea ocalea



Hypoleria ocalea ocalea



Hypoleria ocalea ocalea



Hypoleria ocalea ocalea



Hypoleria ocalea ocalea



Hypoleria ocalea ocalea



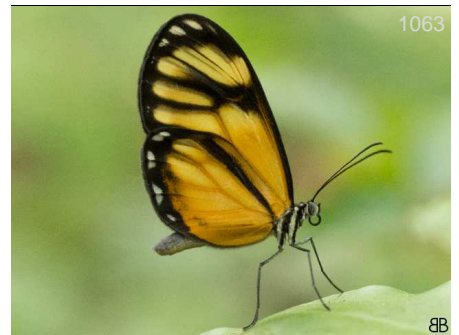
Hypoleria ocalea ocalea



Hypoleria ocalea ocalea



Hypoleria ocalea ocalea



Hypoleria ocalea ocalea



Hypoleria ocalea ocalea



Hyposcada illinissa sinilia



Hyposcada illinissa sinilia



Hyposcada illinissa sinilia



Hypothyris fluonia rowena



Ithomia agnosia agnosia



Ithomia agnosia agnosia



Ithomia iphianassa phanessa



Ithomia iphianassa phanessa



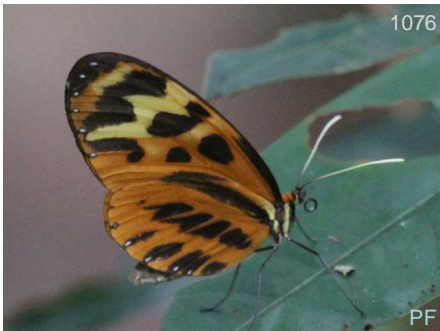
Ithomia iphianassa phanessa



Ithomia xenos



Ithomia xenos



Mechanitis mazaesus mazaesus



Mechanitis messenoides



Mechanitis messenoides



Mechanitis polynnia ssp.



Melinaea menophilus menophilus



Melinaea menophilus menophilus



Napeogenes inachia johnsoni



Napeogenes inachia johnsoni



Pseudoscada timna utilla

Cyrestinae

Daggerwings

Larger butterflies with long, pointed tails, like daggers in English. Often sit on wet dirt with wings open. Many are all brown or all orange with thin vertical stripes.



Marpesia chiron



Marpesia chiron



Marpesia chiron



Marpesia chiron



Marpesia corinna



Marpesia corinna



Marpesia corinna



Marpesia corinna



Marpesia corinna



Marpesia crethon



Marpesia crethon



Marpesia crethon



Marpesia crethon



Marpesia crethon



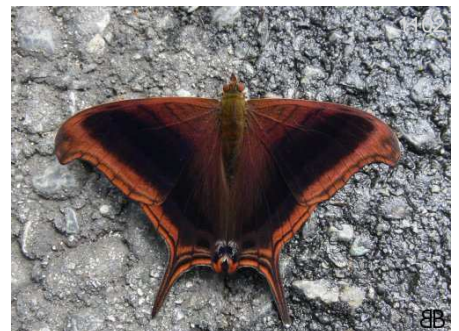
Marpesia crethon



Marpesia livius livius



Marpesia livius livius



Marpesia zerynthia zerynthia



Marpesia zerynthia zerynthia

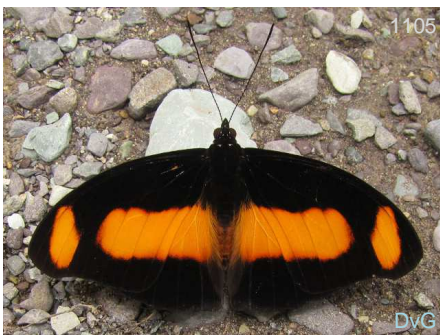


Marpesia zerynthia zerynthia

Biblidinae

Tropical Brushfoots

Medium sized butterflies, varied colors, many are widespread. Includes 88's.



Catonephele salambria CO



Catonephele salambria CO



Hamadryas fornax fornax



Hamadryas fornax fornax



Hamadryas fornax fornax



Epiphile iblis iblis CO-VZ



Epiphile iblis iblis CO-VZ



Epiphile iblis iblis CO-VZ



Epiphile iblis iblis CO-VZ

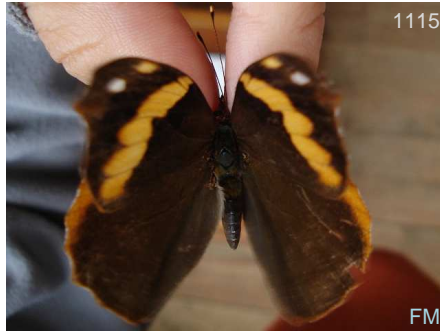


1114

BB

Epiphile iblis iblis

CO-VZ



1115

FM

Epiphile iblis iblis

CO-VZ



1116

FM

Epiphile iblis iblis

CO-VZ



1117

BB

Nica flavilla flavilla

CO?-BR



1118

BB

Nica flavilla flavilla

CO?-BR



1119

KK

Pyrrhogyra crameri undine

CO



1120

BB

Pyrrhogyra crameri undine

CO



1121

BB

Pyrrhogyra crameri undine

CO



1122

BB

Pyrrhogyra crameri undine

CO



1123

SS

Pyrrhogyra edocla edocla

MX-VZ



1124

BB

Pyrrhogyra edocla edocla

MX-VZ



1125

BB

Pyrrhogyra edocla edocla

MX-VZ



1126

BB

Temenis laothoe columbiana CO



1127

BB

Temenis laothoe columbiana CO



1128

FM

Temenis laothoe columbiana CO



1129

BB

Temenis laothoe columbiana CO



1130

BB

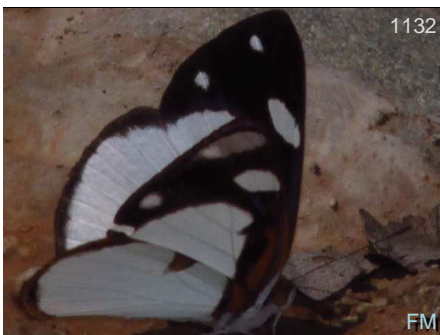
Temenis laothoe columbiana CO



1131

FM

Dynamine anubis pieridoides CO-PE



1132

FM

Dynamine anubis pieridoides CO-PE



1133

TH

Dynamine anubis pieridoides CO-PE



1134

DvG

Dynamine athemon maeon PN-CO



1135

DvG

Dynamine athemon maeon PN-CO



1136

FM

Dynamine racidula racidula



1137

FM

Dynamine racidula racidula



Callicore pitheas CHIA-EC



Callicore pitheas CHIA-EC



Callicore pitheas CHIA-EC



Callicore pitheas CHIA-EC



Callicore pitheas CHIA-EC



Diaethria clymena marchalii NI-BR



Diaethria clymena marchalii NI-BR



Diaethria clymena marchalii NI-BR



Diaethria clymena marchalii NI-BR



Diaethria clymena marchalii NI-BR



Diaethria clymena marchalii NI-BR



Diaethria clymena marchalii NI-BR



Diaethria clymena marchalii NI-BR



Diaethria clymena marchalii NI-BR



Diaethria euclides gueneei CO-EC



Diaethria euclides gueneei CO-EC



Diaethria euclides gueneei CO-EC



Diaethria euclides gueneei CO-EC



Diaethria euclides gueneei CO-EC



Diaethria gabaza gabaza CO



Diaethria gabaza gabaza CO



Diaethria gabaza gabaza CO



Diaethria gabaza gabaza CO



Diaethria gabaza gabaza CO



Diaethria gabaza gabaza CO



Diaethria gabaza gabaza CO



Diaethria gabaza gabaza CO



Diaethria gabaza gabaza CO



Diaethria gabaza gabaza CO

This catalog is the result of the accumulative efforts from a large number of people. The following are the photographers who have contributed their photos to this work, thank you very much.

Fotógrafos - Photographers

AH	Adrian Hoskins	AN	Andrew Neild	BB	Juan Guillermo Jaramillo Velaz
BBn	Bill Bouton	BBt	Bill Berthet	BH	Bob Hardwick
BS	Barry Scampion	CCvl	Charles Covell	CRm	Cristóbal Ríos-Málaver
CV	Claudia Villegas	DGw	Deborah Galloway (Deby)	DP	David Powel
DvG	David Geale	DW	Dan Wade	FD	Fabrice Ducordeau
FH	Fred Heath	FM	Fredy Montero	GC	Gill Carter
GM	Glenn Mahler	GQ	Gil Quintanilla	IN	Ichiro Nakamura
JAB	Johnnier Arango Bermudez	JK	John Kemner	JMD	John MacDonald
Jpe	Jorge Perez	JSn	Jim Snyder	KG	Kim Garwood
KK	Ken Kertell	KP	Kevin Painter	KW	Kay Wade
KWs	Kristine Wallstrom	LC	Les Catchick	LE	Lee Ellington
LEM	Luis Eduardo Mejia	Leo	Leopoldina Tapasco	MC	Mike Chapman
MM	Martin Moreno	PB	Priscilla Brodtkin	PF	Pablo Florez
PT	Paul Thompson	RC	Rick Cech	RL	Richard Lehman
RnM	Renato Mattei	RR	Roger Rittmaster	SN	Sherry Nelson
SS	Shirley Sekarajasingham	TG	Thierry Garcia	TH	Tony Hoare
THn	Tom Horton	WC	Will Carter	WS	Willie Sekula

Agradecimientos - Acknowledgements

Este catálogo es el resultado del esfuerzo acumulativo de un gran número de colaboradores y fotógrafos a quienes damos las gracias.

Agradecemos a los siguientes expertos que generosamente han ayudado en la identificación de algunas de nuestras fotos: Stephane Attal, Andrew Brower, Bernard Hermier, James Mallet, Andrew Neild, Gregory Nielsen, Tomasz Pycrcz, Julian Salazar, Aaron Soh and Keith Willmott. Todos los errores en identificación son responsabilidad de Kim Garwood o Juan Guillermo Jaramillo V.

This catalog is the result of cumulative effort of many collaborators and photographers whom we thank.

We thank the following experts who generously helped in identifying some of our photos: Stephane Attal, Andrew Brower, Bernard Hermier, James Mallet, Andrew Neild, Gregory Nielsen, Tomasz Pycrcz, Julian Salazar, Aaron Soh and Keith Willmott. All errors in identications are the responsibility of Kim Garwood and Juan Guillermo Jaramillo.

Numero de especies en la base de datos 3.863 y con subespecies 5.039, numero de fotos 8.415, especies y subespecies con foto 2.791, con la colaboracion de 136 fotografos.

Number of species in database 3.863 and with subspecies 5.039, number of photos 8.415, species and subspecies with photo 2.791, with the colaboration of 136 photographers.

Bibliografía - Bibliography

Para citar utilice - To quote use:

GARWOOD K., JARAMILLO J.G. Catálogo de las mariposas de Santa Maria, Santa María, Boyacá, Colombia [en línea], BioButterfly Database. Disponible en: < <http://www.neotropicalbutterflies.com/> y la fecha de impresión sábado, 01 de abril de 2017

Páginas web recomendadas - Recommended websites

Las siguientes páginas dan información complementaria al catálogo o han sido útiles en la identificación de especies:
The following pages provide additional information to the catalog or have been useful in identifying species:

Información general de mariposas: www.learnaboutbutterflies.com

Mariposas del neotrópico: www.neotropicalbutterflies.com

Mariposas de Norte, Centro y Sur América, más Caribe: www.butterfliesofamerica.com

Mariposas del Parque Nacional Sangay – Ecuador: www.sangay.eu/index.php?lang=en

Fotografía de mariposas: butterflyphotography-bb.blogspot.com y vea video en www.youtube.com/watch?v=-9-

inf Especies por localidad 3CV para PDF - 10feb2016



Este listado no es un índice, la numeración consecutiva sirve para contar las especies de la localidad, además el listado puede contener un número mayor de especies que el catálogo pues hay especies observadas, colectadas o reportadas en la literatura que no tienen aún fotos en la base de datos.

This list is not an index, the consecutive numbering is used to count the species of the locality, in addition the list may contain a greater number of species than the catalog as there are species observed, collected or reported in the literature that do not yet have photos in the database.

Mariposas de Santa Maria

Hesperiidae

Eudaminae

- 1 *Astraptes alardus*
- 2 *Autochton longipennis*
- 3 *Autochton zarex*
- 4 *Chioides catillus*
- 5 *Epargyreus socus*
- 6 *Phanus ecitonorum*
- 7 *Phanus obscurior obscurior*
- 8 *Phocides vulcanides*
- 9 *Spathilepia clonius*
- 10 *Typhedanus optica optica*
- 11 *Urbanus dorantes dorantes*
- 12 *Urbanus esmeraldus*
- 13 *Urbanus simplicius*
- 14 *Urbanus tanna*
- 15 *Urbanus teleus*
- 16 *Urbanus viterboana*

Hesperiinae

- 17 *Apaustus gracilis gracilis*
- 18 *Arita arita*
- 19 *Callimormus corades*
- 20 *Cobalopsis nero*
- 21 *Conga chydaea*
- 22 *Cymaenes laureolus laureolus*
- 23 *Decinea neroides neroides*
- 24 *Enosis angularis*
- 25 *Molo mango*
- 26 *Niconiades sp Santamaria*
- 27 *Nyctelius nyctelius nyctelius*
- 28 *Pompeius pompeius*
- 29 *Saliana esperi esperi*

- 30 *Saliana morsa*
- 31 *Saliana placens*
- 32 *Thracides arcalaus*
- 33 *Thracides nida*
- 34 *Vehilus vetula*
- 35 *Vettius coryna coryna*
- 36 *Vettius lafrenaye pica*
- 37 *Vettius phyllus phyllus*
- 38 *Xeniades orchamus orchamus*

Heteropterinae

- 39 *Dalla ibhara*

Pyrginae

- 40 *Achlyodes pallida*
- 41 *Aethilla memmius*
- 42 *Anastrus neaeris narva*
- 43 *Anisochoria pedalioidina polysticta*
- 44 *Bolla atahuallpai*
- 45 *Camptopleura termon*
- 46 *Celaenorrhinus eligius eligius*
- 47 *Diaeus ambata*
- 48 *Diaeus variegata*
- 49 *Eantis thraso*
- 50 *Ebrietas anacreon anacreon*
- 51 *Ebrietas anacreon leucophaea*
- 52 *Ebrietas evanidus*
- 53 *Ebrietas infanda*
- 54 *Elbella azeta azeta*
- 55 *Elbella scylla*
- 56 *Eracon lachesis*
- 57 *Gorgopas chlorocephala chlorocephala*
- 58 *Gorgythion begga begga*
- 59 *Gorgythion plautia*
- 60 *Heliopetes alana*

- 61 *Mylon cajus cajus*
- 62 *Mylon lassia*
- 63 *Mylon zephus zephus*
- 64 *Myscelus phoronis phoronis*
- 65 *Nisoniades sp Santamaria*
- 66 *Noctuana haematospila*
- 67 *Noctuana noctua*
- 68 *Ouleus fridericus*
- 69 *Polycctor fera falla*
- 70 *Potamanaxas effusa effusa*
- 71 *Potamanaxas hirta hirta*
- 72 *Pyrgus adepta*
- 73 *Pyrgus orcus*
- 74 *Pyrrhopyge papius papius*
- 75 *Pyrrhopyge phidias phidias*
- 76 *Quadrus lugubris ophia*
- 77 *Quadrus truncata*
- 78 *Sostrata festiva*
- 79 *Staphylus lizeri*
- 80 *Staphylus vulgata*
- 81 *Trina geometrina geometrina*
- 82 *Xenophanes tryxus*

Papilionidae

Papilioninae

- 83 *Heraclides anchisiades idaeus*
- 84 *Mimoides xeniades halex*
- 85 *Parides erithalion erithalion*
- 86 *Parides neophilus olivencius*

Pieridae

Coliadinae

- 87 *Anteos menippe*

- 88 *Eurema albula albula*
- 89 *Eurema arbela gratiosa*
- 90 *Eurema दौरा दौरा*
- 91 *Eurema elathea vitellina*
- 92 *Eurema phiale columbia*
- 93 *Eurema salome salome*
- 94 *Eurema xantochlora xantochlora*
- 95 *Leucidia brephos*
- 96 *Phoebis argante argante*
- 97 *Phoebis neocypris rurina*
- 98 *Phoebis philea philea*
- 99 *Phoebis sennae marcellina*

Dismorphiinae

- 100 *Dismorphia crisia foedora*
- 101 *Dismorphia thermesia*
- 102 *Enantia lina*
- 103 *Lieinix nemesis nemesis*
- 104 *Pseudopieris nehemia*

Pierinae

- 105 *Archonias brassolis critias*
- 106 *Ascia monuste orseis*
- 107 *Catasticta flisa dilutior*
- 108 *Cunizza hirlanda serda*
- 109 *Hesperocharis marchalii*
- 110 *Leodonta dysoni batzebina*
- 111 *Leodonta dysoni*
- 112 *Leodonta tellane intermedia*
- 113 *Leptophobia aripa aripa*
- 114 *Leptophobia philoma*
- 115 *Leptophobia tovaria subflavescens*
- 116 *Melete leucadia*
- 117 *Melete leucanthe leucanthe*
- 118 *Melete lycimnia reducta*
- 119 *Pereute leucodrosime leucodrosime*
- 120 *Perrhybris lorena lorena*
- 121 *Pieriballia viardi locusta*

Riodinidae

Euselasiinae

- 122 *Euselasia bettina*
- 123 *Euselasia corduena*
- 124 *Euselasia cuta*
- 125 *Euselasia euclates*
- 126 *Euselasia eumedia*
- 127 *Euselasia eusepus*
- 128 *Euselasia melaphaea*

- 129 *Euselasia orfita*
- 130 *Euselasia subargentea*
- 131 *Hades noctula*

Riodininae

- 132 *Alesa amesis*
- 133 *Amarynthis meneria*
- 134 *Ancyluris aulestes jocularis*
- 135 *Ancyluris aulestes aulestes*
- 136 *Ancyluris meliboeus eudaemon*
- 137 *Calospila cilissa*
- 138 *Calospila emylius*
- 139 *Caria trochilus*
- 140 *Chamaelimnas briola briola*
- 141 *Charis anius*
- 142 *Crocozona coecias arcuata*
- 143 *Emesis aurimna*
- 144 *Emesis cypria guppyi*
- 145 *Emesis fastidiosa*
- 146 *Emesis lucinda*
- 147 *Emesis mandana mandana*
- 148 *Emesis tegula*
- 149 *Emesis temesa*
- 150 *Eurybia dardus annulata*
- 151 *Eurybia franciscana*
- 152 *Eurybia nicaeus erythinosa*
- 153 *Eurybia patrona patrona*
- 154 *Isapis agyrtus falcis*
- 155 *Ithomiola floralis cascella*
- 156 *Lasaia moeres*
- 157 *Leucochimona icare*
- 158 *Melanis electron*
- 159 *Melanis marathon marathon*
- 160 *Melanis marathon assimulata*
- 161 *Mesosemia mevania mevania*
- 162 *Mesosemia telegone telegone*
- 163 *Napaea eucharila*
- 164 *Necyria bellona saundersii*
- 165 *Necyria duellona*
- 166 *Nymphidium ascolia olivencius*
- 167 *Nymphidium lisimon lisimon*
- 168 *Parcella amarynthina*
- 169 *Perophtalma tullius*
- 170 *Rhetus dysonii caligosus*
- 171 *Rhetus periander*
- 172 *Riodina lysippus lysias*
- 173 *Sarota myrtea*

- 174 *Setabis myrtis gelasine*
- 175 *Siseme alectryio tantilla*
- 176 *Siseme aristoteles minerva*
- 177 *Siseme pallas pallas*
- 178 *Synargis ochra*
- 179 *Teratophthalma maenades maenades*
- 180 *Theope nycteis*
- 181 *Xenandra pelopia*

Lycaenidae

Polyommatainae

- 182 *Cupido comyntas texana*
- 183 *Zizula cyna*

Theclinae

- 184 *Arawacus separata*
- 185 *Arumecla aruma*
- 186 *Brangas getus*
- 187 *Calycopis bactra*
- 188 *Contrafacia imma*
- 189 *Janthecla sp santa maria*
- 190 *Laothus gibberosa*
- 191 *Micandra platyptera*
- 192 *Ministrymon una una*
- 193 *Nicolaea dolium*
- 194 *Rekoa meton*
- 195 *Strymon gabatha*
- 196 *Theritas mavors*
- 197 *Thestius meridionalis*
- 198 *Thestius sp santa maria*
- 199 *Tmolus echion*
- 200 *Ziegleria hesperitis*

Nymphalidae

Apaturinae

- 201 *Doxocopa cyane mexicana*
- 202 *Doxocopa laurentia cherubina*
- 203 *Doxocopa zumilda felderi*

Biblidinae

- 204 *Callicore pitheas*
- 205 *Catonephele salambria*
- 206 *Diaethria clymena marchalii*
- 207 *Diaethria euclides guenei*
- 208 *Diaethria gabaza gabaza*
- 209 *Dynamine anubis pieridoides*
- 210 *Dynamine athemon maeon*
- 211 *Dynamine racidula racidula*

Mariposas de Santa Maria

- 212 *Epiphile iblis iblis*
213 *Hamadryas fornax fornax*
214 *Nica flavilla flavilla*
215 *Pyrrhogyra crameri undine*
216 *Pyrrhogyra edocla edocla*
217 *Temenis laothoe columbiana*
- Charaxinae**
- 218 *Archaeoprepona amphimachus amphimachus*
219 *Hypna clytemnestra clytemnestra*
220 *Memphis acidalia memphis*
221 *Memphis leonida leonida*
222 *Memphis lineata*
223 *Memphis philumena chaeronea*
224 *Prepona praeneste praeneste*
- Cyrestinae**
- 225 *Marpesia chiron*
226 *Marpesia corinna*
227 *Marpesia crethon*
228 *Marpesia livius livius*
229 *Marpesia zerynthia zerynthia*
- Danainae**
- 230 *Ceratinia tutia*
231 *Danaus gilippus*
232 *Episcada polita polita*
233 *Episcada salvinia apia*
234 *Greta andromica andromica*
235 *Hyaliris ocna ocna*
236 *Hypoleria ocalea ocalea*
237 *Hyoscada illinissa sinilia*
238 *Hypothyris fluonia rowena*
239 *Ithomia agnosia agnosia*
240 *Ithomia iphianassa phanessa*
241 *Ithomia xenos*
242 *Lycorea halia atergatis*
243 *Lycorea ilione lamirus*
244 *Mechanitis mazaesus mazaesus*
245 *Mechanitis messenoides*
246 *Mechanitis polymnia ssp.*
247 *Melinaea marsaeus mothone*
248 *Melinaea menophilus menophilus*
249 *Napeogenes inachia johnsoni*
250 *Oleria gunilla lubilerda*
251 *Pseudoscada timna utilla*
252 *Pteronymia gertschi*
- Heliconiinae**
- 253 *Actinote pellenea perfulva*
254 *Altinote dicaeus ozinta*
255 *Altinote stratonice stratonice*
256 *Dryas iulia iulia*
257 *Eueides aliphera aliphera*
258 *Heliconius clysonymus clysonymus*
259 *Heliconius erato hydara*
260 *Heliconius heurippa*
261 *Heliconius melpomene melpomene*
262 *Heliconius numata messene*
263 *Heliconius sara sara*
264 *Laparus doris doris*
- Limenitidinae**
- 265 *Adelpha alala negra*
266 *Adelpha cytherea olbia*
267 *Adelpha delinita delinita*
268 *Adelpha epione agilla*
269 *Adelpha irmina*
270 *Adelpha lycorias lara*
271 *Adelpha messana delphicola*
- Nymphalinae**
- 272 *Anartia amathea amathea*
273 *Anartia jatrophae jatrophae*
274 *Anthanassa drusilla drusilla*
275 *Castilia angusta*
276 *Castilia eramites*
277 *Castilia ofella*
278 *Colobura dirce dirce*
279 *Eresia clio clio*
280 *Eresia letitia letitia*
281 *Eresia polina*
282 *Gnathotriche exclamationis exclamationis*
283 *Hypanartia dione dione*
284 *Hypanartia lethe lethe*
285 *Janatella leucodesma*
286 *Metamorpha elissa elissa*
287 *Ortilia gentina*
288 *Siproeta epaphus epaphus*
289 *Tegosa anieta anieta*
290 *Tegosa nazaria*
291 *Telenassa delphia catenaria*
292 *Telenassa jana*
293 *Tigridia acesta latifascia*
- Satyrinae**
- 294 *Caligo illioneus oberon*
295 *Caligo telamonius menus*
296 *Chloreuptychia arnaca*
297 *Cissia penelope*
298 *Euptychia hannemanni*
299 *Euptychia westwoodi*
300 *Euptychoides saturnus*
301 *Hermeuptychia hermes*
302 *Lymanopoda albomaculata albomaculata*
303 *Magneuptychia libye*
304 *Megeuptychia antonoe*
305 *Morpho achilles achilles*
306 *Morpho helenor theodoros*
307 *Morpho menelaus lecromi*
308 *Oressinoma typhla typhla*
309 *Pareuptychia ocirrhoe*
310 *Pierella lamia lamia*
311 *Taygetis laches*



infEspecies por localidad listado TXT - feb21 2016