

Foto Guía de
Mariposas

Estación
Biológica

Wayqecha

Altos de vía **Manu**



Kim Garwood & Juan Guillermo Jaramillo

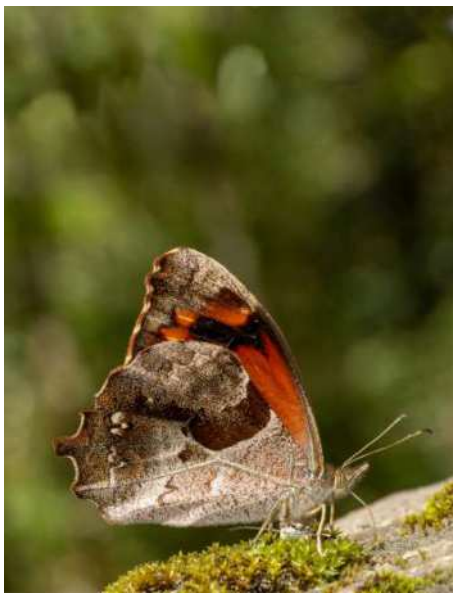
“Esta guía está dedicada a todas las personas que nos han ayudado a construirla y a todos aquellos que están trabajando por el conocimiento y la conservación de la naturaleza.”

“This guide is dedicated to all the people who have helped us to build it and to all those who are working for the knowledge and conservation of nature.”

Para citar este documento utilice: [To cite this document use:](#)

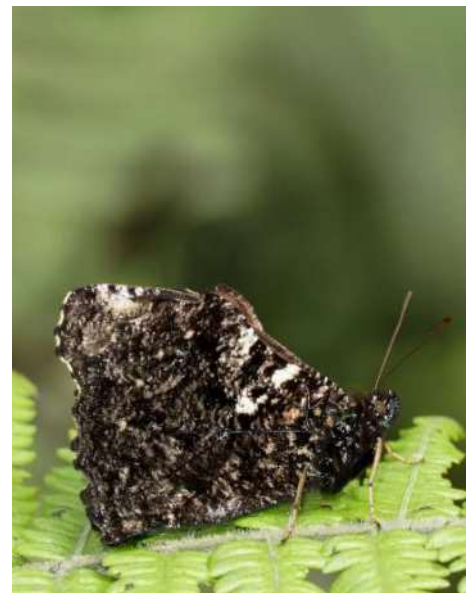
GARWOOD K., JARAMILLO J.G. (2022). *Foto Guía de mariposas Estación biológica Wayqecha/ Photo Guide of Butterflies Estación biológica Wayqecha (Lepidoptera: Papilionoidea)*. BioButterfly Database. V1. 126pp. Disponible en / Available at <http://www.butterflycatalogs.com> (Descargado/Downloaded: 07 de noviembre de 2022)

Base de datos, diseño y diagramación Juan Guillermo Jaramillo V.



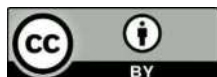
Lasiophila orbifera

Foto cubierta (Front cover):
Juan Guillermo Jaramillo



Steroma superba

Foto cubierta inglés (English cover):
Juan Guillermo Jaramillo



Familia - Family

Hesperiidae



Thespis othna othna

Foto: David Geale

Familia - Family

Hesperiidae

Skippers

Estacion Biologica Wayqecha

Estacion Biologica Wayqecha

Subfamilia - Subfamily

Eudaminae

Tribu - Tribe

Eudamini

Subtribu - Subtribe

Eudamina



1

Urbanus elmina

PE DvG
CO-BO,AR



2

Urbanus elmina

PE 2200m DvG
CO-BO,AR



3

Urbanus elmina

PE DvG
CO-BO,AR



4

Urbanus elmina

PE 2200m DvG
CO-BO,AR

Subfamilia - Subfamily

Pyrrhopyginae

Tribu - Tribe

Pyrrhopygini

Subtribu - Subtribe

Pyrrhopygina



5

Ardaris lomax

Mimardaris
PE

AN
PE



6

Mysoria cosinga catana

Metardaris
PE 3100m

DvG
PE-BO



7

Mysoria cosinga catana

Metardaris
PE 3100m

DvG
PE-BO



8

Mysoria cosinga catana

Metardaris
PE 2700m

DvG
PE-BO



9

Pyrrhopyge decipiens

CO

CO-BO



10

Pyrrhopyge decipiens

CO

CO-BO



11

Pyrrhopyge decipiens

CO

BB
CO-BO



12

Pyrrhopyge decipiens

CO

CO-BO



13

Pyrrhopyge decipiens

PE 1300m

DvG
CO-BO



Pyrrhopyge hadassa halma

PE 1050m KK
PE-BO



Pyrrhopyge hadassa halma

BO 1600m DvG
PE-BO



Pyrrhopyge hadassa halma

PE 1450m KK
PE-BO



Pyrrhopyge hadassa halma

BO 1600m DvG
PE-BO

Subfamilia - Subfamily

Pyrginae

Tribu - Tribe

Carcharodini

Subtribu - Subtribe

Sin Subtribu

No Subtribe



Noctuana haematospila

CO 2100m ♀
BB
VZ-BO,AR



Noctuana haematospila

CO 2100m BB
VZ-BO,AR



Noctuana haematospila

CO 1400m DvG
VZ-BO,AR



Noctuana haematospila

BB
CO 2100m VZ-BO,AR



Noctuana haematospila

DvG
EC 1300m VZ-BO,AR



Noctuana haematospila

BB
CO 2100m VZ-BO,AR



Noctuana haematospila

BB
CO 2100m VZ-BO,AR



Noctuana haematospila

BB
CO 2100m VZ-BO,AR

Tribu - Tribe
Erynnini

Subtribu - Subtribe
Erynnina



Potamanaxas frenda

DvG
PE PE



Potamanaxas frenda

KG
PE PE



Potamanaxas laoma cosna

AN
PE PE-BO



Potamanaxas laoma cosna

DvG
PE PE-BO



Theagenes albiplaga

BB
CO CO-AR



Theagenes albiplaga

CO 1450m DvG CO-AR



Theagenes albiplaga

CO CO-AR



Theagenes albiplaga

CO 1450m DvG CO-AR



Theagenes albiplaga

CO 1800m CO-AR



Theagenes albiplaga

CO 1800m CO-AR

Subfamilia - Subfamily
Heteropterinae

Tribu - Tribe
Heteropterini

Subtribu - Subtribe
Sin Subtribu

No Subtribe



Dalla agathocles lanna

PE AN CO-PE



Dalla agathocles lanna

PE 1200m DvG CO-PE



Dalla agathocles lanna

PE 3150m AN CO-PE



Dalla agathocles lanna

PE 1200m DvG CO-PE



Dalla agathocles lanna

PE 3150m AN CO-PE



Dalla caicus inca

PE DvG CO-BO



Dalla caicus inca

CO 1800m CO-BO



Dalla caicus inca

CO 1800m CO-BO



Dalla caicus inca

PE 1050m KNc CO-BO



Dalla caicus inca

EC AN CO-BO



Dalla caicus inca

PE 1050m DvG CO-BO



Dalla caicus inca

CO 1800m CO-BO



Dalla caicus inca

CO 1800m CO-BO



Dalla cocha

PE 2050m KK PE-BO



Dalla costala costala

PE AN PE-BO



Dalla costala costala

AN
PE PE-BO



Dalla costala costala

AN
PE PE-BO



Dalla costala costala

AN
PE PE-BO



Dalla costala costala

AN
PE PE-BO



Dalla costala costala

KK
PE 2050m PE-BO



Dalla costala costala

AN
PE PE-BO



Dalla cupavia cupavia

DvG
PE 2050m S PE-BO



Dalla cupavia cupavia

KG
PE S PE-BO



Dalla cupavia cupavia

KG
PE S PE-BO



Dalla cupavia cupavia

DvG
PE 2050m S PE-BO



Dalla cupavia cupavia

AN
PE S PE-BO



Dalla cupavia cupavia

KG
PE S PE-BO



Dalla cupavia cupavia

PE 1800m DvG S PE-BO



Dalla cupavia cupavia

PE 2200m AN S PE-BO



Dalla cupavia cupavia

PE 1050m DvG S PE-BO



Dalla cupavia cupavia

PE 900m DvG S PE-BO



Dalla cyprius quinka

PE 1350m AN PE



Dalla cyprius quinka

PE 1450m DvG PE



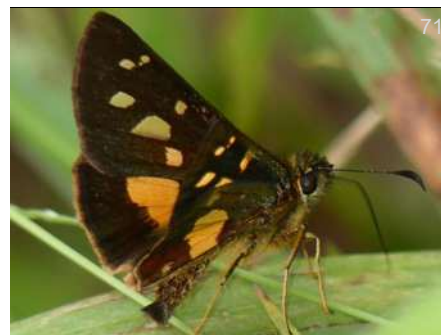
Dalla cyprius quinka

PE 2100m DvG PE



Dalla cyprius quinka

PE 1800m DvG PE



Dalla cypselus evages

PE AN EC-BO



Dalla cypselus evages

PE AN EC-BO



Dalla cypselus evages

PE 1400m DvG EC-BO



Dalla cypselus evages

PE 1450m KK EC-BO



Dalla cypselus evages

BO 1550m DvG
EC-BO



Dalla cypselus evages

PE 1850m DvG
EC-BO



Dalla dimidiatus lilla

PE 2200m AN
S EC-BO



Dalla dimidiatus lilla

PE 1800m DvG
S EC-BO



Dalla dimidiatus lilla

PE 2200m AN
S EC-BO



Dalla dognini

EC AN
CO-BO



Dalla dognini

EC KK
CO-BO



Dalla dognini

BO 1540m KG
CO-BO



Dalla dognini

PE AN
CO-BO



Dalla dognini

PE AN
CO-BO



Dalla dognini

PE AN
CO-BO



Dalla dognini

EC AN
CO-BO



Dalla dognini

AN
PE CO-BO



Dalla epiphaneus limba

DvG
PE 1800m PE



Dalla epiphaneus limba

DvG
PE 1800m PE



Dalla epiphaneus limba

KK
PE 1970m PE



Dalla genes nona

DvG
PE 2400m S PE-BO



Dalla genes nona

DvG
PE 2500m S PE-BO



Dalla genes nona

KK
PE 2250m S PE-BO



Dalla genes nona

DvG
PE 2400m S PE-BO



Dalla golia

DvG
PE 2500m PE



Dalla huanca

AN
PE 3460m PE



Dalla huanca

AN
PE PE



Dalla miser

DvG
PE 2300m CO-BO



Dalla miser

CO 1810m

CO-BO



Dalla miser

CO 1810m

CO-BO



Dalla miser

PE 2300m

CO-BO



Dalla orsines

PE 3200m

VZ-BO



Dalla miser

PE 1400m

DvG

CO-BO



Dalla miser

CO

BBt

CO-BO



Dalla orsines

PE 3200m

DvG

VZ-BO



Dalla polycrates lania

PE 1200m

KG

SE PE-BO



Dalla miser

CO 1810m

CO-BO



Dalla miser

CO 1810m

CO-BO



Dalla orsines

PE 3200m

DvG

VZ-BO



Dalla polycrates lania

PE 2150m

DvG

SE PE-BO



Dalla polycrates lania

CO 2600m SE PE-BO KG



Dalla polycrates lania

PE 2500m SE PE-BO DvG



Dalla scylla

PE AN CO-AR



Dalla scylla

PE 1500m CO-AR DW



Dalla scylla

PE AN CO-AR



Dalla scylla

PE AN CO-AR



Ladda carnis carnis

PE 1800m S PE-BO DvG



Ladda carnis carnis

BO 2000m S PE-BO DW



Ladda eburones eburones

PE 2200m SE PE-BO KG



Ladda eburones eburones

PE 1950m SE PE-BO DvG



Ladda eburones eburones

PE 2200m SE PE-BO KK



Ladda eburones eburones

BO 1600m SE PE-BO DvG



Ladda monospila

Dalla DvG
PE 2100m PE-BO



Ladda quadristriga rota

Dalla KK
PE 2200m SE PE



Ladda quadristriga rota

Dalla KK
PE 2200m SE PE



Ladda quadristriga rota

Dalla KG
PE 2400m SE PE



Ladda ticias

Dalla AN
PE 2200m EC-BO,AR



Ladda ticias

Dalla DvG
PE 2000m EC-BO,AR



Ladda ticias

Dalla AN
PE EC-BO,AR



Ladda ticias

Dalla DvG
PE 2300m EC-BO,AR

Subfamilia - Subfamily
Hesperiinae

Tribu - Tribe
Hesperiini

Subtribu - Subtribe
Anthoptina



Racta racta

CO 1650m DvG EC-BO



Racta racta

CO 1650m DvG EC-BO

Subtribu - Subtribe

Carystina



Molo pelta

PE 2000m DvG EC-PE



Molo pelta

PE 2000m DvG EC-PE

Subtribu - Subtribe

Falgina



Falga jeconia odol

PE KG PE



Falga jeconia odol

PE DvG PE



Falga jeconia odol

PE DvG PE

Subtribu - Subtribe

Hesperiina



Hylephila galera

PE AN PE-BO



Hylephila galera

PE AN PE-BO



Hylephila galera

AN
PE PE-BO



Hylephila isonira isonira

DvG
PE CO-BO



Hylephila pallisteri

AN
PE PE(Cusco)



Hylephila peruana

DvG
PE PE



Hylephila isonira isonira

KK
PE CO-BO



Hylephila isonira isonira

DvG
PE CO-BO



Hylephila peruana

DvG
PE PE



Hylephila phyleus andina

DvG ♀
PE 2900m BO-N AR



Hylephila isonira isonira

DvG
PE CO-BO



Hylephila isonira isonira

DvG
PE CO-BO



Hylephila peruana

DvG
PE PE



Hylephila phyleus andina

DvG
PE 2900m BO-N AR



Hylephila phyleus andina

PE 2900m DvG BO-N AR



Hylephila phyleus andina

PE 2900m DvG BO-N AR



Thespieus argentina

PE 2400m DvG PE-AR



Thespieus argentina

PE 1600m DvG PE-AR



Thespieus fassli

PE DvG PE-BO



Thespieus fassli

PE DvG PE-BO



Thespieus othna othna

CO 3000m FM VZ-BO



Thespieus othna othna

PE KG VZ-BO



Thespieus othna othna

CO 2200m DvG VZ-BO



Thespieus othna othna

CO 2500m VZ-BO



Thespieus othna othna

CO 2600m MF VZ-BO



Thespieus othna othna

PE DW VZ-BO



Thespieus pinda

KG
CO 1850m CO-PE



Thespieus pinda

AN
PE 2200m CO-PE



Thespieus thona

DvG
EC 2500m EC-PE



Thespieus thona

DvG
EC 2500m EC-PE



Thespieus thona

DvG
EC 2500m EC-PE



Thespieus thona

DvG
EC 2500m EC-PE

Subtribu - Subtribe

Moncina



Alychna degener

Psoralis ♀
DvG
CO 2700m CO-PE



Alychna degener

Psoralis ♀
DvG
CO 2700m CO-PE



Alychna degener

Psoralis ♀
DvG
PE CO-PE



Alychna victa

Lychnuchus ♀
DvG
PE 1350m EC-BO



Alychna victa

Lychnuchus ♀
DvG
PE 850m EC-BO



Alychna victa

Lychnuchus
PE 1350m

DvG
EC-BO



Alychna victa

Lychnuchus
PE 1350m

DvG
EC-BO



Corra coryna coryna

Vettius
CO

BB
CO-BO, BR



Corra coryna coryna

Vettius
CO 2500m

DvG
CO-BO, BR



Corra coryna coryna

Vettius
CO

BB
CO-BO, BR



Corra coryna coryna

Vettius
CO 1800m

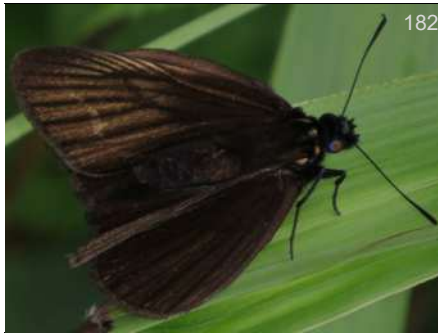
BB
CO-BO, BR



Corra coryna coryna

Vettius
CO 1850m

DvG
CO-BO, BR



Dion carmenta carmenta

BO

DvG
CO-BO



Dion carmenta carmenta

PE

DvG
CO-BO



Dion carmenta carmenta

EC

DvG
CO-BO



Enosis dognini

EC

DvG
CO-BO



Enosis dognini

PE

DvG
CO-BO



Enosis dognini

CO TBn
CO-BO



Lento ludo

CO KG
CO-BO, BR



Lento ludo

CO KG
CO-BO, BR



Lento ludo

CO KG
CO-BO, BR



Mnascas thymoetes

PE KG
Mnasicles EC-PE



Mnascas thymoetes

PE KG
Mnasicles EC-PE



Mnestheus ittona

CO BB
CR-BO



Mnestheus ittona

CO 1700m KG
CR-BO



Ralis concolor

CO 2500m DvG
CO-PE



Tarmia monastica

PE 2400m DvG
EC-PE



Tarmia monastica

PE 2400m DvG
EC-PE



Tarmia monastica

PE 2400m DvG
EC-PE



Viridina viridenex

Tigasis

PE 2200m

AN
PE-BO



Wahydra vola

PE 2900m

♂
DvG
CO-BO



Wahydra vola

PE 2900m

♂
DvG
CO-BO



Wahydra vola

PE 2900m

♂
DvG
CO-BO



Wahydra vola

CO

CO-BO



Wahydra vola

CO

CO-BO



Wahydra vola

CO

CO-BO



Wahydra vola

CO

DvG
CO-BO



Wahydra vola

CO

CO-BO



Wahydra vola

CO

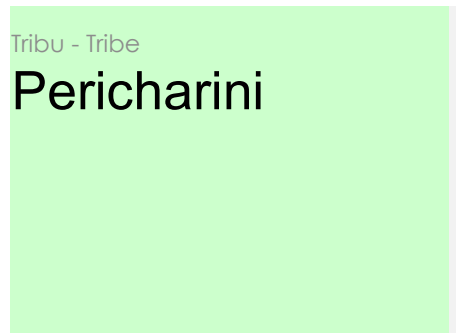
CO-BO



Zalomes illimanensis

PE 2670m

RH
PE-BO



Subtribu - Subtribe

Sin Subtribu

No Subtribe



Oenides vulpina

Alera

EC 2700m

DvG

CO-BO



Oenides vulpina

Alera

PE 2300m

DvG

CO-BO



Oenides vulpina

Alera

PE 2300m

KK

CO-BO



Oenides vulpina

Alera

CO 1800m

BBt

CO-BO



Oenides vulpina

Alera

CO 1850m

CO-BO



Perichares colenda

EC 2700m

DvG

VZ-BO



Perichares colenda

EC 2700m

DvG

VZ-BO



Perichares colenda

CO 2600m

KK

VZ-BO



Perichares colenda

PE 2200m

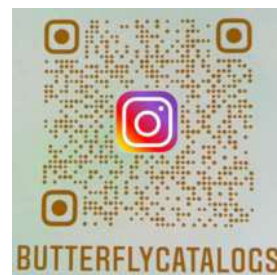
AN

VZ-BO

Última actualización: lunes, 7 de noviembre de 2022

Last update:

[aa infLOCALIDAD](#) [Contenido](#) [Photo](#) [GUIDE](#) [Familia](#)



Familia - Family

Papilionidae



Pterourus warscewiczii

Foto: Andrew Neild

Familia - Family

Papilionidae

Swallowtails

Estacion Biologica Wayqecha

Estacion Biologica Wayqecha

Subfamilia - Subfamily

Papilioninae

Tribu - Tribe

Papilionini

Subtribu - Subtribe

Sin Subtribu

No Subtribe



Pterourus warscewiczii



Pterourus warscewiczii



Pterourus warscewiczii

PE AN
PE-BO

PE 1000m KNc
PE-BO

PE AN
PE-BO



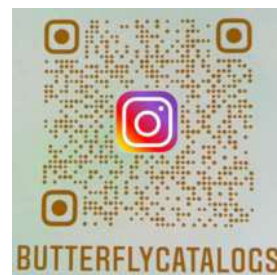
Pterourus warscewiczii

PE AN
PE-BO

Última actualización: lunes, 7 de noviembre de 2022

Last update:

[aa infLOCALIDAD](#) [Contenido Photo GUIDE](#) [Familia](#)



Familia - Family

Pieridae



Catasticta superba

Foto: Juan Guillermo Jaramillo

Familia - Family

Pieridae

Whites and Sulphurs

Estacion Biologica Wayqecha

Estacion Biologica Wayqecha

Subfamilia - Subfamily

Dismorphiinae

Tribu - Tribe

Sin Tribu

No Tribe

Subtribu - Subtribe

Sin Subtribu

No Subtribe



Lieinix nemesis nemesis

♂

CO 1800m

VZ-AR



Lieinix nemesis nemesis

♀

CO

VZ-AR



Lieinix nemesis nemesis

♀

CO 1600m

VZ-AR



Lieinix nemesis nemesis

♀

MX

VZ-AR
KG



Lieinix nemesis nemesis

♀

CO 2100m

VZ-AR



Lieinix nemesis nemesis

♀

CO 2100m

VZ-AR



Pseudopieris viridula zulma

PE KK
S PE-BO

Subfamilia - Subfamily
Coliadae

Tribu - Tribe
Sin Tribu

No Tribe

Subtribu - Subtribe
Sin Subtribu

No Subtribe



Colias euxanthe hermina

PE 3750m JT
PE-BO



Colias euxanthe hermina

PE 3750m JT
PE-BO



Colias euxanthe hermina

PE 3750m DvG
PE-BO



Colias lesbia verhulsti

PE 3750m ♂
DvG
PE



Colias lesbia verhulsti

PE 3750m ♂
DvG
PE



Colias lesbia verhulsti

PE ♂
DvG
PE



14

Colias lesbia verhulsti

♀

DvG

PE

PE



15

Eurema reticulata

DvG

PE

EC-PE



16

Eurema reticulata

DvG

PE

EC-PE



17

Teriocolias zelia

Eurema

DvG

PE

PE-BO,AR,CH



18

Teriocolias zelia

Eurema

DvG

PE

PE-BO,AR,CH



19

Teriocolias zelia

Eurema

DvG

PE

PE-BO,AR,CH



20

Teriocolias zelia

Eurema

DvG

PE

PE-BO,AR,CH

Subfamilia - Subfamily

Pierinae

Tribu - Tribe

Pierini

Subtribu - Subtribe

Sin Subtribu

No Subtribe



Catasticta anaitis ssp n

PE JB
PE



Catasticta anaitis ssp n

PE DvG
PE



Catasticta cinerea cinerea

PE JB
PE-BO



Catasticta cinerea cinerea

PE AN
PE-BO



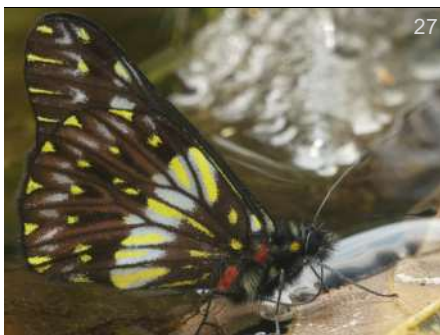
Catasticta cinerea cinerea

PE AN
PE-BO



Catasticta colla punctata

PE JB
PE



Catasticta colla punctata

PE DvG
PE 1950m



Catasticta collina collina

PE DvG
PE



Catasticta collina collina

PE DvG
PE



Catasticta cora

PE AN
PE



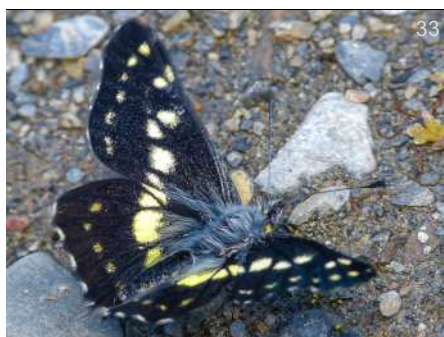
Catasticta cora

PE DvG
PE



Catasticta cora

PE DvG
PE



Catasticta cora

PE AN
PE PE



Catasticta cora

PE AN
PE PE



Catasticta cora

PE AN
PE PE



Catasticta cora

PE DvG
PE PE



Catasticta cora

PE AN
PE PE



Catasticta ctemene strigosa

PE DvG
PE PE



Catasticta ctemene strigosa

PE DvG
PE PE



Catasticta ctemene strigosa

PE DvG
PE PE



Catasticta chelidonis chelidonis

BO YG
PE-BO PE-BO



Catasticta chelidonis chelidonis

PE AN
PE-BO PE-BO



Catasticta chelidonis chelidonis

BO YG
PE-BO PE-BO



Catasticta eximia lamasi

PE DvG
PE PE



Catasticta eximia lamasi

PE DvG
PE



Catasticta eximia lamasi

PE DvG
PE



Catasticta eximia lamasi

PE DvG
PE



Catasticta eximia lamasi

PE KK
PE



Catasticta manco manco

PE DvG
PE-BO



Catasticta manco manco

PE KK
PE-BO



Catasticta manco manco

PE KK
PE-BO



Catasticta manco manco

PE KK
PE-BO



Catasticta manco manco

PE DvG
PE-BO



Catasticta manco manco

PE KK
PE-BO



Catasticta manco manco

PE DvG
PE-BO



Catasticta marcapita

PE KK
PE-BO



57

Catasticta marcapita

AN
PE PE-BO



58

Catasticta marcapita

AN
PE PE-BO



59

Catasticta modesta

KG
PE PE



Catasticta modesta

AN
PE PE



61

Catasticta modesta

KK
PE PE



62

Catasticta modesta

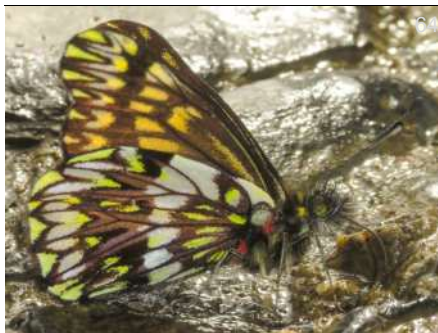
AN
PE PE



63

Catasticta modesta

AN
PE PE



64

Catasticta modesta

AN
PE PE



65

Catasticta pieris intermedia

IN
PE PE



66

Catasticta pieris intermedia

KK
PE PE



67

Catasticta pieris intermedia

AN
PE PE



68

Catasticta pinava pinava

KK
PE PE-BO



Catasticta pinava pinava

PE DvG PE-BO



Catasticta pinava pinava

PE DvG PE-BO



Catasticta pinava pinava

PE KK PE-BO



Catasticta similis

PE JB PE



Catasticta similis

PE JB PE



Catasticta similis

PE 1850m DvG PE



Catasticta sinapina sinapina

PE DvG SE PE



Catasticta sinapina sinapina

PE JB SE PE



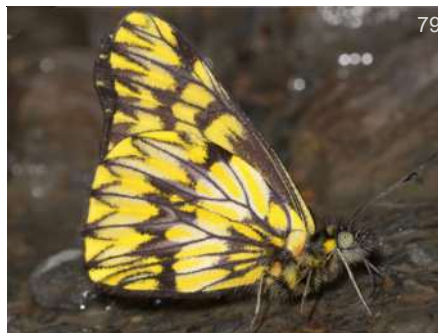
Catasticta sinapina sinapina

PE DvG SE PE



Catasticta sinapina sinapina

PE KK SE PE



Catasticta sinapina sinapina

PE KK SE PE



Catasticta sinapina sinapina

PE DvG SE PE



Catasticta sinapina sinapina

PE KG
SE PE



Catasticta sinapina sinapina

PE DvG
SE PE



Catasticta smithia

PE 2900m ♀
KG
PE



Catasticta smithia

PE ♀
JB
PE



Catasticta smithia

PE 2900m ♀
KG
PE



Catasticta smithia

PE ♀
JB
PE



Catasticta smithia

PE AN
PE



Catasticta suasa

PE JB
PE-BO



Catasticta suasa

PE IN
PE-BO



Catasticta suasa

PE DvG
PE-BO



Catasticta suasa

PE DvG
PE-BO



Catasticta suasa

PE DvG
PE-BO



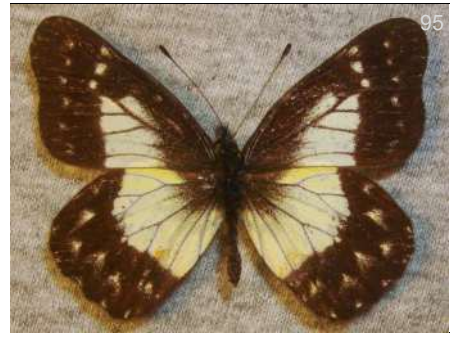
Catasticta superba

AN PE AN PE



Catasticta superba

AN PE AN PE



Catasticta susiana galbinea

♀
JB PE PE



Catasticta susiana galbinea

♀
JB PE PE



Catasticta susiana galbinea

DvG PE 1950m PE



Catasticta susiana galbinea

KK PE PE



Catasticta susiana galbinea

JB PE PE



Catasticta susiana galbinea

KK PE PE



Catasticta susiana galbinea

DvG PE 1850m PE



Catasticta susiana galbinea

AN PE PE



Catasticta toca

♂
JB PE-BO PE



Catasticta toca

♀
JB PE-BO PE



Catasticta toca

BO YG
PE-BO



Catasticta toca

BO YG
PE-BO



Catasticta toca

PE KK
PE-BO



Catasticta toca

PE-BO



Catasticta toca

PE AN
PE-BO



Catasticta watkinsi

PE DvG
PE



Catasticta watkinsi

PE KK
PE



Hesperocharis marchalii

CO 1850m VZ-AR



Hesperocharis marchalii

CO 1850m VZ-AR



Hesperocharis marchalii

CO 1850m VZ-AR



Hesperocharis marchalii

PE DvG
VZ-AR



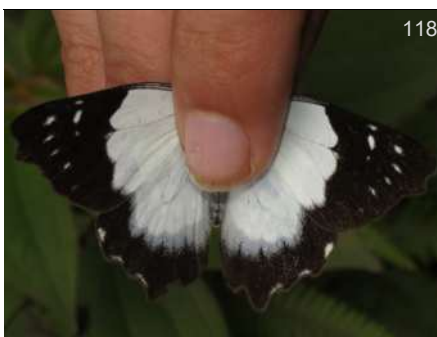
Leodonta dysoni

CO KG
CR-PE



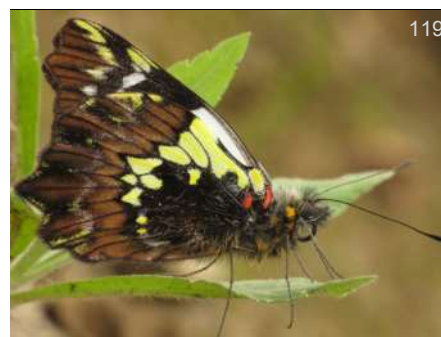
Leodonta dysoni

CO 1850m KG
CR-PE



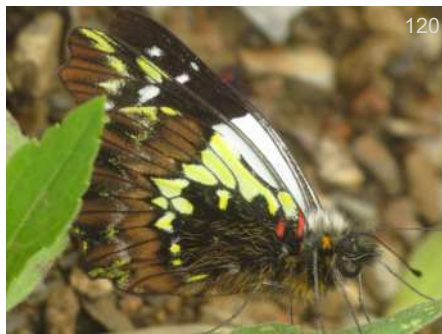
Leodonta tagaste peruana

PE DvG
PE-BO



Leodonta tagaste peruana

PE DvG
PE-BO



Leodonta tagaste peruana

PE KG
PE-BO



Leodonta tellane

PE DvG
CR-PE



Leodonta tellane

PE DvG
CR-PE



Leodonta zenobia monticola

PE DvG
PE



Leptophobia aripa elodina

PE DvG
PE-BO,BR,AR



Leptophobia aripa elodina

PE DvG
PE-BO,BR,AR



Leptophobia diaguita

PE 2900m DvG
EC-PE,AR



Leptophobia eleone luca

EC AN
EC-BO



Leptophobia eleone luca

EC BBT
EC-BO



Leptophobia eleone luca

PE DvG
EC-BO



Leptophobia eleone luca

EC DvG
EC-BO



Leptophobia eleone luca

PE DvG
EC-BO



Leptophobia eleone luca

EC BbT
EC-BO



Leptophobia eleusis mollitica

PE DvG
EC-BO



Leptophobia eucosma

PE 2800m DvG
PE



Leptophobia eucosma

PE 2900m DvG
PE



Leptophobia helena hughesi

PE 2900m DvG
PE



Leptophobia helena hughesi

PE KG
PE



Leptophobia penthica

PE DvG
VZ-BO



Leptophobia penthica

PE DvG
VZ-BO



Leptophobia philoma subargentea

PE DvG
EC-BO



Leptophobia philoma subargentea

PE DvG EC-BO



Leptophobia philoma subargentea

PE DvG EC-BO



Phulia nymphula

PE DW ♂ PE-BO,AR,CH



Phulia nymphula

PE HB ♀ PE-BO,AR,CH



Phulia nymphula

PE JB PE-BO,AR,CH



Phulia nymphula

PE JB PE-BO,AR,CH



Tatochila autodice

PE DvG PE-BR,CH,AR



Tatochila autodice

PE AN PE-BR,CH,AR



Tatochila autodice

PE KK PE-BR,CH,AR



Tatochila autodice

PE DvG PE-BR,CH,AR



Tatochila xanthodice paucar

PE AN PE



Tatochila xanthodice paucar

PE AN PE



Tatochila xanthodice paucar

PE

AN
PE

Última actualización: lunes, 7 de noviembre de 2022

Last update:

[aa infLOCALIDAD](#) [Contenido Photo](#) [GUIDE](#) [Familia](#)



Familia - Family

Lycaenidae



Penaincisalia loxurina

Foto: Juan Guillermo Jaramillo

Familia - Family

Lycaenidae

Blues and Hairstreaks

Estacion Biologica Wayqecha

Estacion Biologica Wayqecha

Subfamilia - Subfamily

Theclinae

Tribu - Tribe

Eumaeini

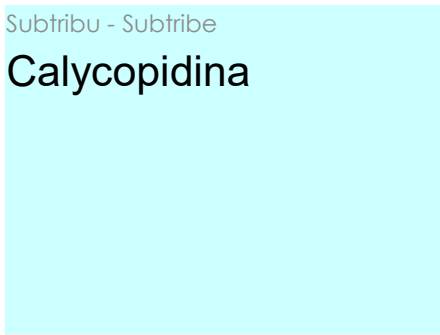
Subtribu - Subtribe

Atlidina



Atlides havila

BO GS
CO-BO



Subtribu - Subtribe
Calycopidina



Camissecla pactya

EC JHg
CO-BO



Camissecla pactya

CO 2090m MC
CO-BO



Camissecla pactya

PE DvG
CO-BO



Lamprospilus nicetus

EC THn
VZ-BO



Lamprospilus nicetus

PE DvG
VZ-BO

Subtribu - Subtribe
Callophryidina



Cyanophrys banosensis

PE KG
EC-PE



Thaeides muela

PE DvG
EC-BO,CH

Subtribu - Subtribe
Eumaeina



Micandra aegides

EC ♂
KG
VZ-PE



Micandra aegides

EC ♀
DvG
VZ-PE



Micandra aegides

PE DvG
VZ-PE



Micandra comae

EC ♂
DvG
CO-PE



Micandra comae

CO 1850m ♀
JAB
CO-PE



Micandra comae

CO ♀
KK
CO-PE



Micandra comae

EC ♀
DvG
CO-PE



Micandra comae

♀

DvG

EC

CO-PE



Micandra comae

♀

DvG

EC

CO-PE



Micandra comae

DvG

CO 2600m

CO-PE



Micandra dignota

DvG

PE

CO-BO

Subtribu - Subtribe
Jantheclina



Laothus viridicans

DvG

EC

VZ-BO



Laothus viridicans

BB

CO

VZ-BO



Laothus viridicans

DvG

PE

VZ-BO



Laothus viridicans

AN

EC

VZ-BO

Subtribu - Subtribe
Rhammina



Johnsonita pardo

THn

CO

VZ-BO



Johnsonita pardo

AN

PE

VZ-BO



Rhamma arria

26

♂
FM

CO 3000m

VZ-BO,AR



Rhamma arria

27

AH

CO

VZ-BO,AR



Rhamma aurugo

28

DvG

PE

PE



Rhamma familiaris

29

Paralustrus
EC

DvG
CO-BO

Subtribu - Subtribu
Strymonina



Rhamma familiaris

30

Paralustrus
EC

KG
CO-BO



Strymon davara

32

AN

PE

EC-BO,BR



Penaincisalia acjabamba

33

Abloxurina
PE

JT
PE



Penaincisalia acjabamba

34

Abloxurina
PE

Ecz
PE



Penaincisalia amatista

35

Abloxurina
PE

DvG
EC-PE



Penaincisalia culminicola

EC KG
PE-BO



Penaincisalia culminicola

PE DvG
PE-BO



Penaincisalia loxurina ♂

Thecloxurina
CO 2500m CO-BO,VZ,AR



Penaincisalia loxurina

Thecloxurina DvG
PE CO-BO,VZ,AR



Penaincisalia loxurina

Thecloxurina DvG
CO 2800m CO-BO,VZ,AR



Penaincisalia loxurina

Thecloxurina DvG
CO 2800m CO-BO,VZ,AR



Penaincisalia loxurina

Thecloxurina DvG
CO 2600m CO-BO,VZ,AR



Penaincisalia loxurina

Thecloxurina DvG
CO 2800m CO-BO,VZ,AR



Penaincisalia loxurina

Thecloxurina BBt
CO CO-BO,VZ,AR



Penaincisalia loxurina

Thecloxurina DvG
CO 2800m CO-BO,VZ,AR



Penaincisalia loxurina

Thecloxurina DvG
CO 2600m CO-BO,VZ,AR



Penaincisalia purpurea

Pons DvG
PE EC-PE



Penaincisalia purpurea

Pons KK
PE EC-PE



Timaeta timaeus

♂ BB
CO CO-BO



Timaeta timaeus

♀ BB
CO CO-BO

Subfamilia - Subfamily
Polyommata



Timaeta timaeus

♂ CO CO-BO



Timaeta timaeus

♂ CO 1800m CO-BO



Timaeta timaeus

♀ DvG
PE CO-BO

Tribu - Tribe
Polyommata



Timaeta timaeus

♂ BB
CO CO-BO



Timaeta timaeus

♂ DvG
PE CO-BO



Timaeta timaeus

♀ CO 1850m CO-BO

Subtribu - Subtribe
Sin Subtribu

No Subtribe



Itylos pacis

Madeleinea

PE

AN

PE-BO



Itylos pacis

Madeleinea

PE

AN

PE-BO



Leptotes callanga

PE

AN

PE-BO



Leptotes callanga

PE

DvG

PE-BO



Leptotes callanga

PE

DvG

PE-BO



Leptotes callanga

EC

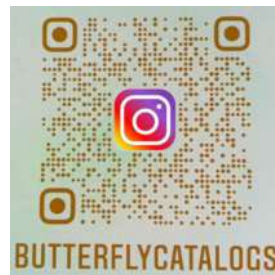
AN

PE-BO

Última actualización: lunes, 7 de noviembre de 2022

Last update:

aa infLOCALIDAD Contenido Photo GUIDE Familia



Familia - Family

Nymphalidae



Junea dorinda

Foto: Juan Guillermo Jaramillo

Familia - Family

Nymphalidae

Brushfoots

Estacion Biologica Wayqecha

Estacion Biologica Wayqecha

Subfamilia - Subfamily

Danainae

Tribu - Tribe

Danaini

Subtribu - Subtribe

Sin Subtribu

No Subtribe



Lycorea ilione phenarete

PE DvG PE-BO



Lycorea ilione phenarete

PE 700m DvG PE-BO



Lycorea ilione phenarete

PE DvG PE-BO



Lycorea ilione phenarete

PE DvG PE-BO

Tribu - Tribe

Ithomiini

Subtribu - Subtribe

Athesitina



Patricia deryclidas

EC DvG
VZ-PE

Subtribu - Subtribu
Dircennina



Episcada apuleia cora

PE DvG
PE-BO



Hyalenna paradoxa catenata

PE KG
PE



Pteronymia serrata

PE DvG
CO-PE



Pteronymia serrata

PE DvG
CO-PE

Subtribu - Subtribu
Godyridina



Godyris crinippa nubilosa

PE DvG
PE



Godyris crinippa nubilosa

PE 2200m DvG
PE



Godyris panthyale

CO 1800m DJF
VZ-PE



Godyris panthyale

CO 1800m DJF
VZ-PE



Hypomenitis enigma koechlini

PE 2100m *Greta* DvG
PE



Hypomenitis gardneri

Greta
PE DvG
EC-BO

Subtribu - Subtribe

Ithomiina



Hypomenitis ortygia

Greta
PE RH
VZ-BO



Velamysta pennina

PE 2200m DvG
PE-BO



Ithomia terra terra

CO PC
VZ-BO



Ithomia terra terra

CO 1800m DvG
VZ-BO

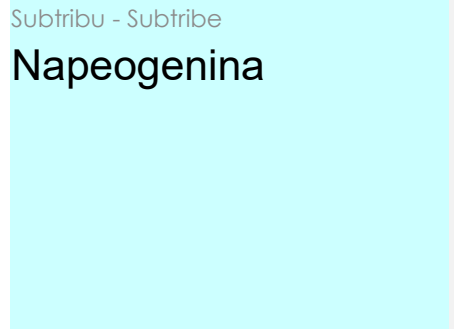
Subtribu - Subtribe

Methonina



Methona maxima nigerrima

PE DvG
PE



Napeogenina



Napeogenes harbona domiduca

BO YG
PE-BO



Napeogenes harbona domiduca

BO YG
PE-BO



Napeogenes larilla

EC McG
VZ-PE



24

Napeogenes larilla

EC McG
VZ-PE



26

Oleria attalia attalia

PE DvG
PE-BO



29

Oleria tremona schoenfelderi

PE DvG
PE-BO

Subfamilia - Subfamily
Heliconiinae

Subtribu - Subtribe
Oleriina



25

Oleria athalina athalina

PE RH
PE



27

Oleria attalia attalia

PE KG
PE-BO



28

Oleria attalia attalia

PE 2150m DvG
PE-BO

Tribu - Tribe
Acraeini

Subtribu - Subtribe
Sin Subtribu

No Subtribe



Altinote alcione sodalis

♂
DvG

PE 1900m

PE



Altinote dicaeus euris

♂
DvG

PE 1500m

PE



Altinote dicaeus euris

♂
DvG

PE 1500m

PE



Altinote dicaeus euris

DvG
PE

PE 1500m

PE



Altinote eresia eresina

DvG
EC-BO

PE 1950m

EC-BO



Altinote grisaeata

DvG
PE

PE 1850m

PE



Altinote grisaeata

DvG
PE

PE 1850m

PE



Altinote momina

DvG
EC?-PE

PE 1600m

EC?-PE



Altinote momina

DvG
EC?-PE

PE 1600m

EC?-PE



Altinote negra demonica

♀
KG

PE 1800m

EC-BO



Altinote negra demonica

AN
EC-BO

PE

EC-BO



Altinote negra demonica

DvG
EC-BO

PE 1950m

EC-BO

Tribu - Tribe

Argynnnini

Subtribu - Subtribe

Sin Subtribu

No Subtribe



42

Yramea inca

PE 4180m

JB
PE-BO,AR



43

Yramea inca

PE 4180m

JB
PE-BO,AR

Tribu - Tribe

Heliconiini

Subtribu - Subtribe

Sin Subtribu

No Subtribe



44

Dione glycera

CO 2400m

LEM
VZ-BO,AR



45

Dione glycera

PE

DvG
VZ-BO,AR



46

Dione glycera

CO

VZ-BO,AR



47

Dione glycera

CO 2600m

VZ-BO,AR



48

Dione glycera

CO

SN
VZ-BO,AR



49

Dione glycera

CO 2400m

LEM
VZ-BO,AR



Philaethria ostara

PE KNc
VZ-BO



Podotricha telesiphe

PE DvG
CO-BO



Podotricha telesiphe

PE AN
CO-BO



Podotricha telesiphe

PE DW
CO-BO



Podotricha telesiphe

PE DvG
CO-BO

Subfamilia - Subfamily
Limenitidinae

Tribu - Tribe
Limenitidini

Subtribu - Subtribe
Sin Subtribu

No Subtribe



Adelpha alala negra

CO BB
CO C-AR



Adelpha alala negra

CO 1900m BB
CO C-AR



Adelpha alala negra

CO 1800m BB
CO C-AR



Adelpha alala negra

BB
CO 1800m CO C-AR



Adelpha argentea

DvG
PE 1150m CO-BO



Adelpha argentea

DvG
PE 1150m CO-BO



Adelpha aricia aricia

DvG
PE 2100m E slope S PE-BO



Adelpha aricia aricia

DvG
PE 2500m E slope S PE-BO



Adelpha aricia aricia

KG
PE 2500m E slope S PE-BO



Adelpha aricia aricia

DvG
PE 2500m E slope S PE-BO



Adelpha aricia aricia

KG
PE 2500m E slope S PE-BO



Adelpha aricia aricia

KG
PE 2500m E slope S PE-BO



Adelpha lycorias lara

DW
CO VZ-BO, BR, AR



Adelpha lycorias lara

BB
CO VZ-BO, BR, AR



Adelpha lycorias lara

KG
CO VZ-BO, BR, AR



Adelpha lycorias lara

DW
CO VZ-BO, BR, AR



Adelpha olynthia

CO 1900m VZ-BO, BR



Adelpha olynthia

CO 2200m VZ-BO, BR



Adelpha olynthia

DvG
CO 2500m VZ-BO, BR



Adelpha olynthia

CO VZ-BO, BR



Adelpha olynthia

CO 1900m VZ-BO, BR



Adelpha olynthia

CO 1900m VZ-BO, BR



Adelpha saundersii helepecki

BO 1900m CO-BO



Adelpha saundersii helepecki

BO TH CO-BO



Adelpha saundersii helepecki

DvG
PE 1850m CO-BO



Adelpha saundersii helepecki

DvG
PE 1850m CO-BO



Adelpha saundersii helepecki

BO 1900m TH CO-BO



Adelpa thessalia thessalia

CO KG
CO-BO, BR

Subfamilia - Subfamily

Biblidinae



Adelpa thessalia thessalia

CO FH
CO-BO, BR

Tribu - Tribe

Callicorini

Subtribu - Subtribe

Sin Subtribu

No Subtribe



Diaethria neglecta neglecta

EC AN
CO-BO, AR



Diaethria neglecta neglecta

EC AN
CO-BO, AR



Diaethria neglecta neglecta

EC AN
CO-BO, AR



Diaethria neglecta neglecta

PE DvG
CO-BO, AR



Diaethria neglecta neglecta

EC AN
CO-BO, AR



Diaethria neglecta neglecta

CO BB
CO-BO, AR



Diaethria neglecta neglecta

CO 560m FM CO-BO,AR



Orophila cecidas

EC DvG EC-PE



Orophila diotima

PE DvG PE-BO



Orophila diotima

PE DvG PE-BO



Orophila cecidas

EC DvG EC-PE



Orophila diotima

PE DvG PE-BO



Orophila diotima

PE AN PE-BO



Orophila diotima

PE DvG PE-BO



Orophila cecidas

EC AN EC-PE



Orophila diotima

PE KG PE-BO



Orophila diotima

PE DvG PE-BO



Orophila diotima

PE DvG PE-BO



Perisama calamis

PE DvG
PE-BO



Perisama calamis

PE DvG
PE-BO



Perisama calamis

PE AN
PE-BO



Perisama calamis

PE AN
PE-BO



Perisama calamis

PE AN
PE-BO



Perisama calamis

PE DvG
PE-BO



Perisama calamis

PE AN
PE-BO



Perisama calamis

PE DvG
PE-BO



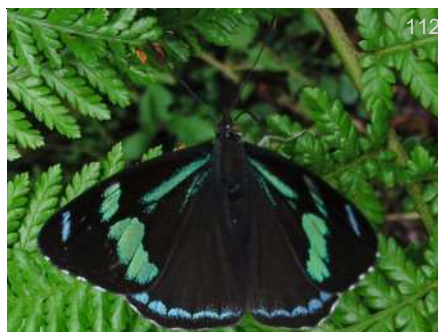
Perisama canoma canoma

PE DvG
PE



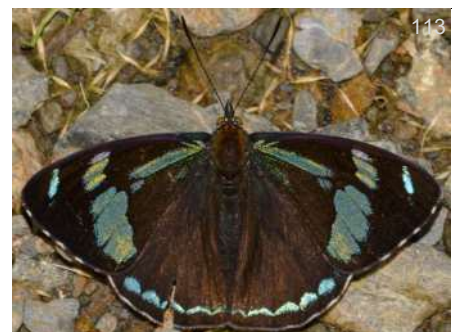
Perisama canoma canoma

PE DvG
PE



Perisama canoma canoma

PE KG
PE



Perisama canoma canoma

PE KK
PE



Perisama canoma canoma

PE DvG
PE



Perisama canoma canoma

PE DvG
PE



Perisama canoma canoma

PE KG
PE



Perisama canoma canoma

PE KK
PE



Perisama comnena comnena

PE AN
PE-BO



Perisama comnena comnena

PE DvG
PE-BO



Perisama comnena comnena

PE KNC
PE-BO



Perisama comnena comnena

PE KG
PE-BO



Perisama comnena comnena

PE AN
PE-BO



Perisama comnena comnena

PE DvG
PE-BO



Perisama comnena comnena

PE AN
PE-BO



Perisama comnena comnena

PE AN
PE-BO



Perisama comnena comnena

PE DvG PE-BO



Perisama dorbignyi jurinei

PE DvG PE-BO



Perisama dorbignyi jurinei

PE KG PE-BO



Perisama dorbignyi jurinei

PE KG PE-BO



Perisama dorbignyi jurinei

PE AN PE-BO



Perisama dorbignyi jurinei

PE DvG PE-BO



Perisama dorbignyi jurinei

PE DvG PE-BO



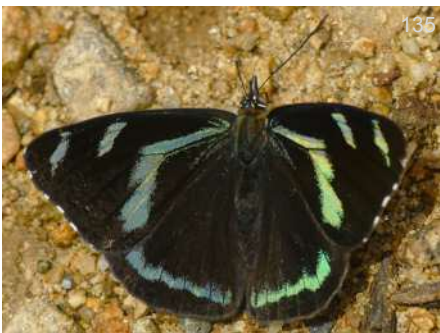
Perisama dorbignyi jurinei

BO DvG PE-BO



Perisama humboldtii tringa

PE DvG EC-BO



Perisama humboldtii tringa

PE DvG EC-BO



Perisama humboldtii tringa

PE DvG EC-BO



Perisama humboldtii tringa

PE DvG EC-BO



Perisama humboldtii tringa

PE DvG EC-BO



Perisama humboldtii tringa

PE DvG EC-BO



Perisama humboldtii tringa

PE DvG EC-BO



Perisama humboldtii tringa

PE KK EC-BO



Perisama humboldtii tringa

CO 1850m KG EC-BO



Perisama morona moronina

PE DvG PE



Perisama morona moronina

PE DvG PE



Perisama morona moronina

PE DvG PE



Perisama morona moronina

PE DvG PE



Perisama morona moronina

PE DvG PE



Perisama philinus philinus

PE DvG PE-BO



Perisama philinus philinus

PE DvG PE-BO



Perisama philinus philinus

PE AN PE-BO

Subtribu - Subtribe
Sin Subtribu

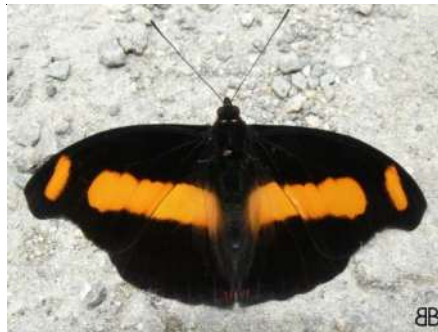
No Subtribe



Perisama philinus philinus

PE KK PE-BO

Tribu - Tribe
Catonephelini



Catonephele chromis chromis

CO VZ-BO, BR BB



Catonephele chromis chromis

CO VZ-BO, BR BB



Catonephele chromis chromis

CO VZ-BO, BR BB



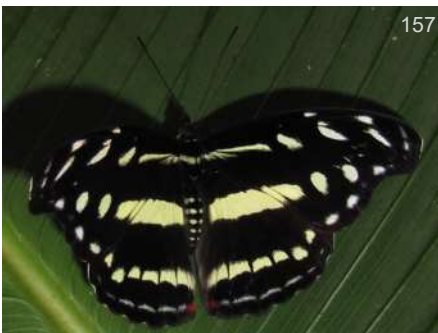
Catonephele chromis chromis

CO VZ-BO, BR BB



Catonephele chromis chromis

CO VZ-BO, BR BB



Catonephele chromis chromis

CO 1400m VZ-BO, BR DvG



Catonephele chromis chromis

CO VZ-BO, BR DvG



Catonephele chromis chromis

CO 1850m VZ-BO, BR Aby



Cybdelis mnasyllus thrasylla

PE DvG
EC-PE

Subtribu - Subtribe
Sin Subtribu

No Subtribe



Cybdelis mnasyllus thrasylla

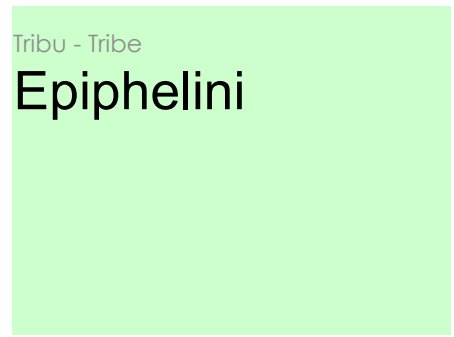
PE DvG
EC-PE



Epiphile boliviana boliviana

PE AN
PE-BO

Tribu - Tribe
Junoniini



Epiphile boliviana boliviana

PE KNc
PE-BO

Subtribu - Subtribe
Sin Subtribu

No Subtribe



Junonia vestina

PE AN
CO-BO,AR



Junonia vestina

PE DvG
CO-BO,AR



Subtribu - Subtribe
Sin Subtribu

No Subtribe



Gnathotriche mundina mundina

PE DvG PE



Gnathotriche mundina mundina

PE DvG PE

Tribu - Tribe
Nymphalini

Subtribu - Subtribe
Sin Subtribu

No Subtribe



Hypanartia cinderella

CO BB VZ-BO



Hypanartia cinderella

CO 1850m DW VZ-BO



Hypanartia cinderella

CO 1800m VZ-BO



Hypanartia cinderella

CO 1850m KG VZ-BO



Hypanartia cinderella

CO BB VZ-BO



Hypanartia christophori

PE AN S EC-BO



Hypanartia christophori

PE AN S EC-BO



Hypanartia dione dione

CO 1600m CO-PE,AR



Hypanartia dione dione

CO CO-PE,AR



Hypanartia dione dione

CO 1800m CO-PE,AR



Hypanartia dione dione

CO BB CO-PE,AR



Hypanartia dione dione

CO BB CO-PE,AR



Hypanartia dione dione

CO BB CO-PE,AR



Hypanartia kefersteini

CO FM VZ-BO



Hypanartia kefersteini

CO BB VZ-BO



Hypanartia kefersteini

CO JSn VZ-BO



Hypanartia kefersteini

CO DvG VZ-BO



Hypanartia kefersteini

CO DvG VZ-BO



Hypanartia kefersteini

CO FM VZ-BO



Hypanartia kefersteini

CO 2500m



Hypanartia lethe lethe

CO 1800m



Hypanartia lethe lethe

CO 1800m



Hypanartia lethe lethe

CO



Hypanartia lethe lethe

CO 1800m



Hypanartia lethe lethe

CO 690m



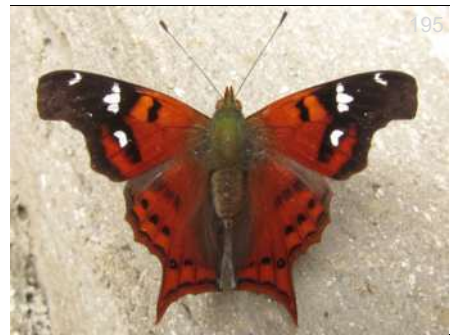
Hypanartia lindigii

CO



Hypanartia lindigii

CO



Hypanartia lindigii

EC



Hypanartia lindigii

EC



Hypanartia lindigii

CO



Hypanartia lindigii

EC



Hypanartia lindigii

EC DvG
CO-PE



Vanessa altissima

PE DvG
EC-BO,AR



Vanessa altissima

PE DvG
EC-BO,AR



Vanessa braziliensis

CO 3000m FM ♂
VZ-AR



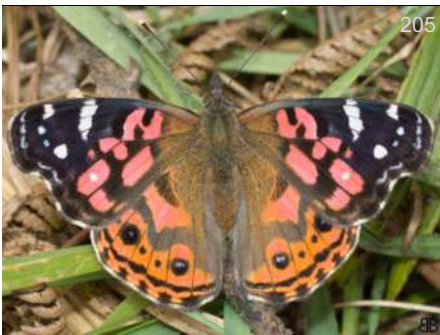
Vanessa braziliensis

CO DW
VZ-AR



Vanessa braziliensis

CO 2600m BB
VZ-AR



Vanessa braziliensis

CO 3090m BB
VZ-AR



Vanessa braziliensis

CO 3090m BB
VZ-AR



Vanessa braziliensis

CO DW
VZ-AR



Vanessa carye

PE AN
VZ-PY,AR



Vanessa carye

CO BB
VZ-PY,AR



Vanessa carye

CO BB
VZ-PY,AR



Vanessa carye

CO DvG
VZ-PY,AR

Tribu - Tribe
Victorinini

Subtribu - Subtribe
Sin Subtribu

No Subtribe



Siproeta epaphus epaphus

CO 1500m US(S Tx)-PE,AR



Siproeta epaphus epaphus

CO 1450m US(S Tx)-PE,AR



Siproeta epaphus epaphus

CO 1800m US(S Tx)-PE,AR



Siproeta epaphus epaphus

CO BB
US(S Tx)-PE,AR



Siproeta epaphus epaphus

CO US(S Tx)-PE,AR



Siproeta epaphus epaphus

CO US(S Tx)-PE,AR

Subfamilia - Subfamily
Charaxinae

Tribu - Tribe
Charaxini

Subtribu - Subtribe
Sin Subtribu

No Subtribe



218

Fountainea titan caudata

PE KG PE



219

Fountainea titan caudata

PE DvG PE



220

Fountainea tyrianthina

PE *Polygrapha* AN EC-BO



221

Fountainea tyrianthina

PE *Polygrapha* AN EC-BO



222

Memphis alberta

PE AN PE-BO



223

Memphis alberta

PE DvG PE-BO

Tribu - Tribe
Preponini

Subtribu - Subtribe
Sin Subtribu

No Subtribe



224

Archaeoprepona chromus

CO VZ-BO, BR, AR ♂



225

Archaeoprepona chromus

CO 1500m DvG VZ-BO, BR, AR



226

Archaeoprepona chromus

CO 1500m KWs VZ-BO, BR, AR



227

Archaeoprepona chromus

CO 2400m VZ-BO, BR, AR



Archaeoprepona chromus

CO VZ-BO, BR, AR



Archaeoprepona chromus

CO VZ-BO, BR, AR



Prepona praeneste buckleyana

PE DvG PE-BO



Prepona praeneste buckleyana

PE DvG PE-BO



Prepona praeneste buckleyana

PE DvG PE-BO



Prepona praeneste buckleyana

PE DvG PE-BO

Subfamilia - Subfamily

Satyrinae

Tribu - Tribe

Brassolini

Subtribu - Subtribe

Sin Subtribu

No Subtribe



Ooptera arsippe arsippe

PE AN PE-BO

Tribu - Tribe

Morphini

Subtribu - Subtribe

Sin Subtribu

No Subtribe



235

Morpho lympharis lympharis

PE AN PE

Tribu - Tribe
Satyrini

Subtribu - Subtribe
Euptychiina



236

Forsterinaria pichita

PE DvG E EC-PE



237

Forsterinaria pichita

PE AN E EC-PE



238

Forsterinaria rustica rustica

PE DvG EC-BO



239

Forsterinaria rustica rustica

CO 2500m EC-BO



240

Hermeuptychia harmonia

CO DW CR-PE



241

Hermeuptychia harmonia

CO DW CR-PE



242

Hermeuptychia harmonia

CO DW CR-PE



243

Hermeuptychia harmonia

CO 1800m KG CR-PE



244

Hermeuptychia harmonia

CO 2200m CR-PE



Hermeuptychia maimoune

PE DvG
EC-PE



Manerebia cyclopella

PE DvG
PE-BO,AR



Manerebia cyclopella

PE DvG
PE-BO,AR



Manerebia reducta

PE 1550m DvG
PE



Manerebia rubescens

PE KG
EC-PE



Manerebia rubescens

EC KG
EC-PE



Manerebia rubescens

EC KG
EC-PE



Oressinoma sorata

PE DvG
PE-BO



Oressinoma sorata

PE DvG
PE-BO



Oressinoma sorata

PE KG
PE-BO



Oressinoma sorata

PE DvG
PE-BO



Oressinoma sorata

PE DvG
PE-BO



Oressinoma sorata

PE DvG PE-BO 257



Pseudodebis puritana

CO 1850m KG CO-BO, BR 258



Pseudodebis puritana

CO 1600m BB CO-BO, BR 259



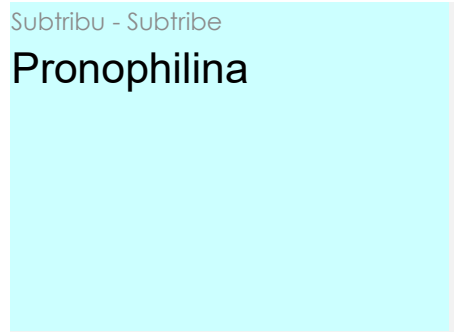
Pseudodebis puritana

CO 1850m DvG CO-BO, BR 260



Pseudodebis puritana

CO 1800m DvG CO-BO, BR 261



Subtribu - Subtribu

Pronophilina



Antopedaliodes antonia

PE KG PE-BO 262



Antopedaliodes antonia

PE DvG PE-BO 263



Apexacuta astoreth

PE DvG PE-BO 264



Apexacuta astoreth

PE DvG PE-BO 265



Apexacuta astoreth

PE DvG PE-BO 266



Argyrophorus lamna

PE 1350m DvG PE-BO 267



Argyrophorus lamna

PE DvG PE-BO



Corades anfortas

PE KSv VZ-PE



Corades argentata

PE DvG PE-BO



Corades argentata

PE DvG PE-BO



Corades cistene generosa

PE DvG CO-BO



Corades cistene generosa

PE DvG CO-BO



Corades enyo almo

CO CO-BO



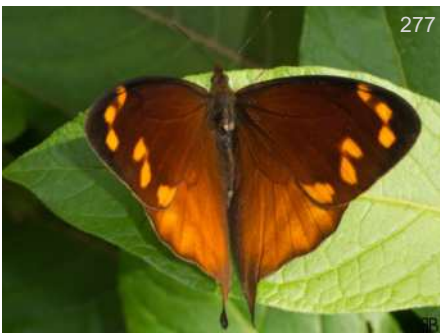
Corades enyo almo

CO 1900m CO-BO



Corades enyo almo

EC DvG CO-BO



Corades enyo almo

CO 1800m CO-BO



Corades enyo almo

CO KG CO-BO



Corades enyo almo

EC AN CO-BO



Corades enyo almo

PE KG
CO-BO



Corades enyo almo

PE DvG
CO-BO



Corades iduna marginalis

PE DvG
PE



Corades medeba medeba

PE AN
PE-BO



Corades enyo almo

CO 1800m CO-BO



Corades enyo almo

CO 1900m CO-BO



Corades iduna marginalis

PE DvG
PE



Corades melania melania

PE ♀
KG
PE-BO



Corades enyo almo

CO CO-BO



Corades iduna marginalis

PE DvG
PE



Corades medeba medeba

BO KK
PE-BO



Corades melania melania

PE ♀
DvG
PE-BO



Corades melania melania

PE DvG PE-BO



Corades sareba fuscipalga

PE DvG PE-BO



Corades sareba fuscipalga

PE DvG PE-BO



Corades ulema ulema

PE AN S PE-BO



Corades ulema ulema

PE KK S PE-BO



Corderopaliodes pandates

PE DvG PE



Corderopaliodes pandates

PE DvG PE



Daedalma boliviana

PE DvG EC-BO



Daedalma boliviana

PE DvG EC-BO



Daedalma boliviana

PE DvG EC-BO



Druphila venerata

PE 2700m DvG PE-BO



Druphila venerata

PE DvG McG PE-BO



Druphila venerata

PE 2750m KG PE-BO



Druphila venerata

PE 2700m DvG PE-BO



Druphila venerata

PE McG PE-BO



Eretris subpunctata

PE DvG PE-BO



Junea doraete enipeus

PE DvG PE-BO



Junea doraete enipeus

PE AN PE-BO



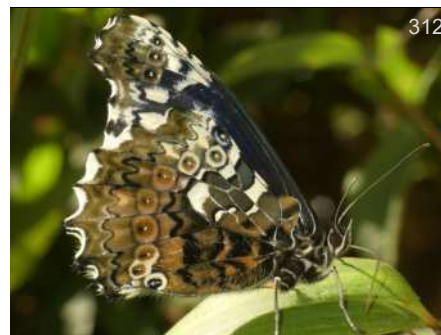
Junea doraete enipeus

PE DvG PE-BO



Junea dorinda whitelyi

PE KG PE-BO



Junea dorinda whitelyi

PE DvG PE-BO



Junea dorinda whitelyi

PE DvG PE-BO



Lasiophila luna

PE DvG PE



Lasiophila luna

PE DvG PE



Lasiophila orbifera orbifera

DvG
PE CO-PE,BO



Lasiophila orbifera orbifera

DvG
PE CO-PE,BO



Lasiophila piscina

AN
PE



Lasiophila piscina

DvG
PE PE



Lymanopoda acraeida acraeida

DvG
PE PE-BO,AR



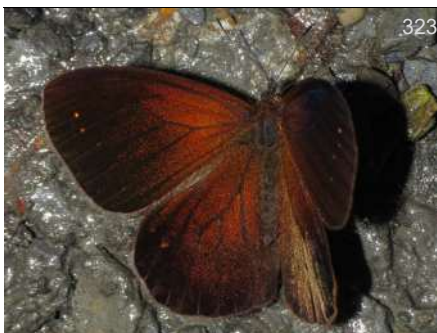
Lymanopoda acraeida acraeida

DvG
PE PE-BO,AR



Lymanopoda acraeida acraeida

DvG
PE PE-BO,AR



Lymanopoda albomaculata

DvG
PE PE-BO



Lymanopoda albomaculata

DvG
PE PE-BO



Lymanopoda apulia

KK
PE PE-BO



Lymanopoda eubagioides

♀
KG
PE PE-BO



Lymanopoda eubagioides

♀
KG
PE PE-BO



Lymanopoda eubagioides

AN
PE PE-BO



Lymanopoda eubagioides

DvG
PE PE-BO



Lymanopoda eubagioides

AN
PE PE-BO



Lymanopoda eubagioides

DvG
PE PE-BO



Lymanopoda hyagnis

KG
PE PE-BO



Lymanopoda hyagnis

DvG
PE PE-BO



Lymanopoda obsoleta

♀
Leo
CO PN-BO



Lymanopoda obsoleta

♀
Leo
CO PN-BO



Lymanopoda obsoleta

KG
CO 2500m PN-BO



Lymanopoda obsoleta

BB
CO 1900m PN-BO



Lymanopoda obsoleta

BB
CO 2500m PN-BO



Lymanopoda obsoleta

BB
CO 1900m PN-BO



Lymanopoda obsoleta

CO 2500m PN-BO



Lymanopoda panacea ocellifera

PE KG PE



Lymanopoda venosa

PE IN PE-BO



Mygona chyrota

PE DvG PE



Lymanopoda obsoleta

CO 2400m PN-BO



Lymanopoda panacea ocellifera

PE KK PE



Lymanopoda venosa

PE DvG PE-BO



Oxeoschistus leucospilos

CO THn CO-PE



Lymanopoda obsoleta

PE DvG PN-BO



Lymanopoda translucida umbratilis

PE KWs S PE



Mygona chyrota

PE DvG PE



Oxeoschistus leucospilos

CO BBT CO-PE



Oxeoschistus leucospilos



Oxeoschistus leucospilos



Panyapedaliodes drymaea

♂
FM
CO-BO



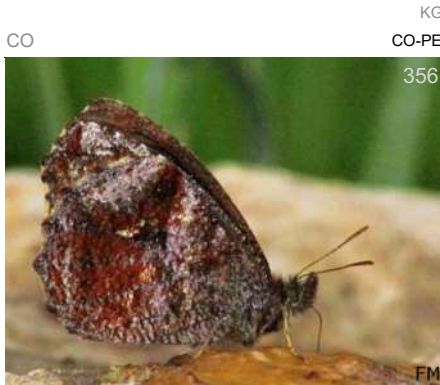
Panyapedaliodes drymaea

BBt

CO-PE

CO

FM



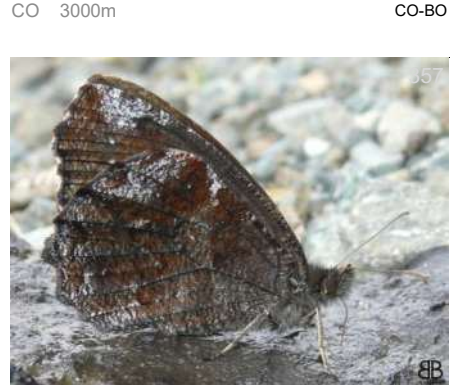
Panyapedaliodes drymaea

KG

CO-PE

CO

FM



Panyapedaliodes drymaea

CO 3000m

♂
FM
CO-BO



Panyapedaliodes drymaea

BBt

CO-PE

CO

FM



Panyapedaliodes drymaea

KG

CO-PE

CO

FM



Panyapedaliodes drymaea

CO

CO-BO



Panyapedaliodes mara

DW

CO-BO

CO

KWs

PE-BO

PE



Panyapedaliodes mara

JSn

CO-BO

CO

AN

PE-BO

PE



Panyapedaliodes mara

CO

CO-BO

PE

KWs

PE-BO



Panyapedaliodes mara

AN
PE PE-BO



Panyapedaliodes puma

DvG
PE PE-BO



Panyapedaliodes silpa

KG
PE 2960m PE-BO



Pedaliodes ackeri

AN
PE PE



Panyapedaliodes muscosa muscosa

DvG
PE PE-BO



Panyapedaliodes silpa

DvG
PE PE-BO



Pedaliodes acjanaco

DvG
PE PE



Pedaliodes ackeri

KK
PE PE



Panyapedaliodes muscosa muscosa

DvG
PE PE-BO



Panyapedaliodes silpa

KG
PE PE-BO



Pedaliodes ackeri

KK
PE PE



Pedaliodes antulla

DvG
PE PE



376

Pedaliodes antulla

PE DvG
PE PE



377

Pedaliodes antulla

PE KG
PE PE



378

Pedaliodes antulla

PE KG
PE PE



379

Pedaliodes auraria

PE DvG
PE PE



380

Pedaliodes auraria

PE AN
PE PE



381

Pedaliodes auraria

PE DvG
PE PE



382

Pedaliodes cledonia

PE DvG
PE BO



383

Pedaliodes cledonia

PE KK
PE BO



384

Pedaliodes cledonia

PE AN
PE BO



385

Pedaliodes demathani ockendeni

PE KG
PE PE



386

Pedaliodes demathani ockendeni

PE KG
PE PE



387

Pedaliodes ferratilis

PE DvG
PE VZ-PE



Pedaliodes ferratilis

PE DvG VZ-PE



Pedaliodes hewitsoni primera

PE DvG PE-BO



Pedaliodes hewitsoni primera

PE AN PE-BO



Pedaliodes hewitsoni primera

PE DvG PE-BO



Pedaliodes hewitsoni primera

PE DvG PE-BO



Pedaliodes molesta

PE KG PE



Pedaliodes molesta

PE DvG PE



Pedaliodes molesta

PE DvG PE



Pedaliodes niveonota

PE KG PE



Pedaliodes pactyes

BO GS PE-BO



Pedaliodes patizathes

EC McG PE-BO



Pedaliodes pausia

BO ♀ KK PE-BO,AR



Pedaliodes pausia

PE DvG
PE-BO,AR



Pedaliodes peruviana

PE TSt
PE



Pedaliodes phaeinomorpha

PE KG
PE



Pedaliodes phaeinomorpha

PE DvG
PE



Pedaliodes phantasia

PE AN
PE



Pedaliodes pheres

PE DvG
PE-BO



Pedaliodes pheres

PE DvG
PE-BO



Pedaliodes praxithea

PE DW
CO-BO



Pedaliodes praxithea

PE KK
CO-BO



Pedaliodes praxithea

PE DvG
CO-BO



Pedaliodes praxithea

EC DvG
CO-BO



Pedaliodes puma

PE KK
PE



412

Pedaliodes transmontana

EC DvG
CO-PE



413

Pedaliodes transmontana

PE DvG
CO-PE



414

Pronophila cordillera variabilis

PE DvG
PE



415

Pronophila cordillera variabilis

PE AN
PE



416

Pronophila cordillera variabilis

PE DvG
PE



417

Pronophila epidipnis

PE DvG
CO,VZ-PE,BO



418

Pronophila epidipnis

PE AN
CO,VZ-PE,BO



419

Pronophila unifasciata kennethi

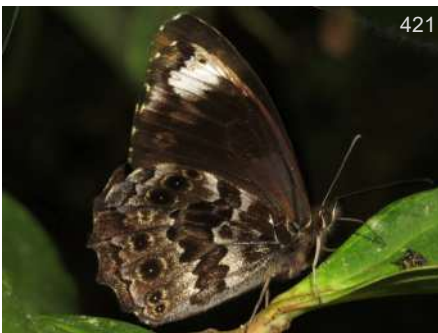
PE DvG
PE-BO, NE AR



420

Pronophila unifasciata kennethi

PE DvG
PE-BO, NE AR



421

Pseudomaniola mirabilis

PE DvG
PE



422

Punapedaliodes flavopunctata

PE AN
EC-BO,AR



423

Punapedaliodes flavopunctata

PE DvG
EC-BO,AR



Steremnia agraulis

PE KW_s
PE-BO



Steremnia agraulis

PE KG
PE-BO



Steremnia monachella

PE DvG
CO-BO



Steremnia monachella

PE DvG
CO-BO



Steremnia monachella

PE DvG
CO-BO



Steremnia monachella

EC DvG
CO-BO



Steremnia umbracina

PE AN
EC-PE



Steremnia umbracina

PE DvG
EC-PE



Steremnia umbracina

PE KG
EC-PE



Steremnia umbracina

EC DvG
EC-PE



Steroma bega andensis

PE DvG
CO-BO



Steroma bega andensis

PE DvG
CO-BO



Steroma modesta

DvG
PE 1050m PE-BO,AR



Steroma modesta

DvG
PE 1400m PE-BO,AR



Steroma superba

DvG
PE PE-BO

Última actualización: lunes, 7 de noviembre de 2022

Last update:

[aa infLOCALIDAD](#) [Contenido Photo](#) [GUIDE](#) [Familia](#)



Estacion Biologica Wayqecha

Ollantaytambo, Cusco

Mariposas de Estacion Biologica Wayqecha

Especie, subespecie, autor Species, subspecies, author	Género anterior Previous genus	Sublocalidad Sublocality	Rango Range	Foto Photo
---	-----------------------------------	-----------------------------	----------------	---------------

Familia - Family

Hesperiidae

lunes, 7 de noviembre de 2022

Subfamilia - Subfamily

Eudaminae

Tribu - Tribe

Eudamini

Subtribu - Subtribe

Eudamina

<input type="checkbox"/>	1 <i>Urbanus elmina</i> Evans, 1952		CO-BO,AR	<input checked="" type="checkbox"/>
--------------------------	-------------------------------------	--	----------	-------------------------------------

Subfamilia - Subfamily

Pyrrhopyginae

Tribu - Tribe

Pyrrhopygini

Subtribu - Subtribe

Pyrrhopygina

<input type="checkbox"/>	2 <i>Ardaris lomax</i> (Evans, 1951)	<i>Mimardaris</i>	PE	<input checked="" type="checkbox"/>
<input type="checkbox"/>	3 <i>Mysoria cosinga catana</i> (Evans, 1951)	<i>Metardaris</i>	PE-BO	<input checked="" type="checkbox"/>
<input type="checkbox"/>	4 <i>Pyrrhopyge decipiens</i> Mabille, 1903		CO-BO	<input checked="" type="checkbox"/>
<input type="checkbox"/>	5 <i>Pyrrhopyge hadassa halma</i> Evans, 1951		PE-BO	<input checked="" type="checkbox"/>

Espece, subespece, autor Species, subspecies, author	Género anterior Previous genus	Sublocalidad Sublocality	Rango Range	Foto Photo
---	-----------------------------------	-----------------------------	----------------	---------------

Subfamilia - Subfamily

Pyrginae

Tribu - Tribe

Carcharodini

Subtribu - Subtribe

Sin Subtribu

<input type="checkbox"/>	6 <i>Noctuana haematospila</i> (C. Felder & R. Felder, 1867)		VZ-BO,AR	<input checked="" type="checkbox"/>
--------------------------	--	--	----------	-------------------------------------

Tribu - Tribe

Erynnini

Subtribu - Subtribe

Erynnina

<input type="checkbox"/>	7 <i>Potamanaxas frenda</i> Evans, 1953		PE	<input checked="" type="checkbox"/>
<input type="checkbox"/>	8 <i>Potamanaxas laoma cosna</i> Evans, 1953		PE-BO	<input checked="" type="checkbox"/>
<input type="checkbox"/>	9 <i>Theagenes albiplaga</i> (C. Felder & R. Felder, 1867)		CO-AR	<input checked="" type="checkbox"/>

Subfamilia - Subfamily

Heteropterinae

Tribu - Tribe

Heteropterini

Subtribu - Subtribe

Sin Subtribu

<input type="checkbox"/>	10 <i>Dalla agathocles lanna</i> Evans, 1955		CO-PE	<input checked="" type="checkbox"/>
<input type="checkbox"/>	11 <i>Dalla caicus inca</i> Draudt, 1923		CO-BO	<input checked="" type="checkbox"/>
<input type="checkbox"/>	12 <i>Dalla cocha</i> Evans, 1955		PE-BO	<input checked="" type="checkbox"/>
<input type="checkbox"/>	13 <i>Dalla costala costala</i> Evans, 1955		PE-BO	<input checked="" type="checkbox"/>
<input type="checkbox"/>	14 <i>Dalla cupavia cupavia</i> (Mabille, 1898)		S PE-BO	<input checked="" type="checkbox"/>
<input type="checkbox"/>	15 <i>Dalla cyprius quinka</i> Evans, 1955		PE	<input checked="" type="checkbox"/>
<input type="checkbox"/>	16 <i>Dalla cypselus evages</i> (Hewitson, 1877)		EC-BO	<input checked="" type="checkbox"/>
<input type="checkbox"/>	17 <i>Dalla dimidiatus lilla</i> Evans, 1955		S EC-BO	<input checked="" type="checkbox"/>
<input type="checkbox"/>	18 <i>Dalla dognini</i> (Mabille, 1889)		CO-BO	<input checked="" type="checkbox"/>
<input type="checkbox"/>	19 <i>Dalla epiphaneus limba</i> Evans, 1955		PE	<input checked="" type="checkbox"/>

	Especie, subespecie, autor <i>Species, subspecies, author</i>	Género anterior <i>Previous genus</i>	Sublocalidad <i>Sublocality</i>	Rango <i>Range</i>	Foto <i>Photo</i>
<input type="checkbox"/>	20 <i>Dalla frontinia vanca</i> Evans, 1955			PE	<input type="checkbox"/>
<input type="checkbox"/>	21 <i>Dalla genes nona</i> Evans, 1955			S PE-BO	<input checked="" type="checkbox"/>
<input type="checkbox"/>	22 <i>Dalla golia</i> Evans, 1955			PE	<input checked="" type="checkbox"/>
<input type="checkbox"/>	23 <i>Dalla hesperioides hister</i> Evans, 1955			PE	<input type="checkbox"/>
<input type="checkbox"/>	24 <i>Dalla huanca</i> Evans, 1955			PE	<input checked="" type="checkbox"/>
<input type="checkbox"/>	25 <i>Dalla miser</i> Evans, 1955			CO-BO	<input checked="" type="checkbox"/>
<input type="checkbox"/>	26 <i>Dalla orsines</i> (Hewitson, 1877)			VZ-BO	<input checked="" type="checkbox"/>
<input type="checkbox"/>	27 <i>Dalla polycrates lania</i> Evans, 1955			SE PE-BO	<input checked="" type="checkbox"/>
<input type="checkbox"/>	28 <i>Dalla scylla</i> (Mabille, 1898)			CO-AR	<input type="checkbox"/>
<input type="checkbox"/>	29 <i>Ladda carnis carnis</i> (Evans, 1955)	<i>Dalla</i>		S PE-BO	<input checked="" type="checkbox"/>
<input type="checkbox"/>	30 <i>Ladda eburones eburones</i> (Hewitson, 1877)	<i>Dalla</i>		SE PE-BO	<input type="checkbox"/>
<input type="checkbox"/>	31 <i>Ladda monospila</i> (Mabille, 1898)	<i>Dalla</i>		PE-BO	<input checked="" type="checkbox"/>
<input type="checkbox"/>	32 <i>Ladda quadristriga rota</i> (Evans, 1955)	<i>Dalla</i>		SE PE	<input checked="" type="checkbox"/>
<input type="checkbox"/>	33 <i>Ladda ticias</i> (Mabille, 1898)	<i>Dalla</i>		EC-BO,AR	<input checked="" type="checkbox"/>

Subfamilia - Subfamily

Hesperiinae

Tribu - Tribe

Pericharini

Subtribu - Subtribe

Sin Subtribu

<input type="checkbox"/>	34 <i>Oenides vulpina</i> (C. Felder & R. Felder, 1867)	<i>Alera</i>		CO-BO	<input checked="" type="checkbox"/>
<input type="checkbox"/>	35 <i>Perichares colenda</i> (Hewitson, 1866)			VZ-BO	<input checked="" type="checkbox"/>

Tribu - Tribe

Hesperiini

Subtribu - Subtribe

Carystina

<input type="checkbox"/>	36 <i>Molo pelta</i> Evans, 1955	<i>Lychnuchus</i>		EC-PE	<input checked="" type="checkbox"/>
--------------------------	----------------------------------	-------------------	--	-------	-------------------------------------

Subtribu - Subtribe

Hesperiina

<input type="checkbox"/>	37 <i>Hylephila galera</i> Evans, 1955			PE-BO	<input checked="" type="checkbox"/>
<input type="checkbox"/>	38 <i>Hylephila isonira isonira</i> Dyar, 1913			CO-BO	<input checked="" type="checkbox"/>
<input type="checkbox"/>	39 <i>Hylephila pallisteri</i> MacNeill, 2002			PE(Cusco)	<input checked="" type="checkbox"/>
<input type="checkbox"/>	40 <i>Hylephila peruana</i> Draudt, 1923			PE	<input checked="" type="checkbox"/>
<input type="checkbox"/>	41 <i>Hylephila phyleus andina</i> (Staudinger, 1894)			BO-N AR	<input checked="" type="checkbox"/>

	Especie, subespecie, autor Species, subspecies, author	Género anterior Previous genus	Sublocalidad Sublocality	Rango Range	Foto Photo
<input type="checkbox"/>	42 <i>Thespies argentina</i> Draudt, 1923			PE-AR	<input checked="" type="checkbox"/>
<input type="checkbox"/>	43 <i>Thespies fassli</i> (Draudt, 1923)			PE-BO	<input checked="" type="checkbox"/>
<input type="checkbox"/>	44 <i>Thespies othna othna</i> (A. Butler, 1870)			VZ-BO	<input checked="" type="checkbox"/>
<input type="checkbox"/>	45 <i>Thespies pinda</i> Evans, 1955			CO-PE	<input checked="" type="checkbox"/>
<input type="checkbox"/>	46 <i>Thespies thona</i> Evans, 1955			EC-PE	<input checked="" type="checkbox"/>
<input type="checkbox"/>	47 <i>Thespies tihoneta tihoneta</i> (Weeks, 1901)			PE-AR	<input checked="" type="checkbox"/>
Subtribu - Subtribe					
Falgina					
<input type="checkbox"/>	48 <i>Falga jeconia odol</i> Evans, 1955			PE	<input checked="" type="checkbox"/>
Subtribu - Subtribe					
Anthoptina					
<input type="checkbox"/>	49 <i>Racta racta</i> Evans, 1955			EC-BO	<input checked="" type="checkbox"/>
Subtribu - Subtribe					
Moncina					
<input type="checkbox"/>	50 <i>Alychna chulumani</i> Medeiros, Dolibaina O. Mielke, 2020			PE-BO	<input checked="" type="checkbox"/>
<input type="checkbox"/>	51 <i>Alychna degener</i> (Plötz, 1882)	<i>Psoralis</i>		CO-PE	<input checked="" type="checkbox"/>
<input type="checkbox"/>	52 <i>Alychna victa</i> (Evans, 1955)	<i>Lychnuchus</i>		EC-BO	<input checked="" type="checkbox"/>
<input type="checkbox"/>	53 <i>Corra coryna coryna</i> (Hewitson, 1866)	<i>Vettius</i>		CO-BO, BR	<input checked="" type="checkbox"/>
<input type="checkbox"/>	54 <i>Dion carmenta carmenta</i> (Hewitson, 1870)			CO-BO	<input checked="" type="checkbox"/>
<input type="checkbox"/>	55 <i>Enosis dognini</i> Mabille, [1889]			CO-BO	<input checked="" type="checkbox"/>
<input type="checkbox"/>	56 <i>Lento ludo</i> Evans, 1955			CO-BO, BR	<input checked="" type="checkbox"/>
<input type="checkbox"/>	57 <i>Lerodea xenos</i> (Mabille, 1898)			PE-BO	<input checked="" type="checkbox"/>
<input type="checkbox"/>	58 <i>Mnascas thymoetes</i> Hayward, 1942	<i>Mnasicles</i>		EC-PE	<input checked="" type="checkbox"/>
<input type="checkbox"/>	59 <i>Mnestheus ittona</i> (A. Butler, 1870)			CR-BO	<input checked="" type="checkbox"/>
<input type="checkbox"/>	60 <i>Niconiades viridis</i> (E. Bell, 1930)			MX-BO, AR	<input checked="" type="checkbox"/>
<input type="checkbox"/>	61 <i>Phanes monasticta</i> (Lindsey, 1925)			EC-PE	<input checked="" type="checkbox"/>
<input type="checkbox"/>	62 <i>Ralis concolor</i> (Nicolay, 1980)	<i>Psoralis</i>		CO-PE	<input checked="" type="checkbox"/>
<input type="checkbox"/>	63 <i>Styriodes planus</i> (Weeks, 1901)			PE-BO	<input type="checkbox"/>
<input type="checkbox"/>	64 <i>Tarmia monastica</i> (Lindsey, 1925)	<i>Phanes</i>		EC-PE	<input checked="" type="checkbox"/>
<input type="checkbox"/>	65 <i>Viridina viridenex</i> (Weeks, 1901)	<i>Tigasis</i>		PE-BO	<input checked="" type="checkbox"/>
<input type="checkbox"/>	66 <i>Viridina viridis</i> (E. Bell, 1942)	<i>Lerema</i>		EC-PE	<input checked="" type="checkbox"/>
<input type="checkbox"/>	67 <i>Wahydra vola</i> (Evans, 1955)			CO-BO	<input checked="" type="checkbox"/>
<input type="checkbox"/>	68 <i>Zalomes illimanensis</i> Evans, 1955			PE-BO	<input checked="" type="checkbox"/>

Especie, subespecie, autor
Species, subspecies, author

Género anterior Sublocalidad Rango
Previous genus Sublocality Range

Foto
Photo

Familia - Family

Papilionidae

lunes, 7 de noviembre de 2022

Subfamilia - Subfamily

Papilioninae

Tribu - Tribe

Papilionini

Subtribu - Subtribe

Sin Subtribu

69 *Pterourus warscewiczii warscewiczii* (Hopffer, 1865)

PE-BO



Especie, subespecie, autor
Species, subspecies, author

Género anterior Sublocalidad Rango
Previous genus Sublocality Range

Foto
Photo

Familia - Family

Pieridae

lunes, 7 de noviembre de 2022

Subfamilia - Subfamily

Dismorphiinae

Tribu - Tribe

Sin Tribu

Subtribu - Subtribe

Sin Subtribu

<input type="checkbox"/>	70 <i>Lieinix nemesis nemesis</i> (Latreille, [1813])	VZ-AR	<input checked="" type="checkbox"/>
<input type="checkbox"/>	71 <i>Pseudopieris viridula zulma</i> Lamas, 2004	S PE-BO	<input type="checkbox"/>

Subfamilia - Subfamily

Coliadinae

Tribu - Tribe

Sin Tribu

Subtribu - Subtribe

Sin Subtribu

<input type="checkbox"/>	72 <i>Colias euxanthe hermina</i> (A. Butler, 1871)	PE-BO	<input checked="" type="checkbox"/>
<input type="checkbox"/>	73 <i>Colias lesbia verhulsti</i> Berger, 1983	PE	<input checked="" type="checkbox"/>
<input type="checkbox"/>	74 <i>Eurema reticulata</i> (Butler, 1871)	EC-PE	<input checked="" type="checkbox"/>
<input type="checkbox"/>	75 <i>Teriocolias zelia</i> (Lucas, 1852)	<i>Eurema</i> PE-BO,AR,CH	<input checked="" type="checkbox"/>

Subfamilia - Subfamily

Pierinae

Espece, subespece, autor Species, subspecies, author	Género anterior Previous genus	Sublocalidad Sublocality	Rango Range	Foto Photo
Tribu - Tribe				
Pierini				
Subtribu - Subtribe				
Sin Subtribu				
<input type="checkbox"/> 76 <i>Catantixia anaitis ssp n</i>			PE	<input checked="" type="checkbox"/>
<input type="checkbox"/> 77 <i>Catantixia aureomaculata aureomaculata</i> Lathy & Rosenberg, 1912			PE	<input checked="" type="checkbox"/>
<input type="checkbox"/> 78 <i>Catantixia cinerea cinerea</i> A. Butler, 1897			PE-BO	<input checked="" type="checkbox"/>
<input type="checkbox"/> 79 <i>Catantixia coerulescens coerulescens</i> (Eitschberger & T. Racheli, 1998)			PE	<input type="checkbox"/>
<input type="checkbox"/> 80 <i>Catantixia coerulescens</i> (Eitschberger & T. Racheli, 1998)			PE	<input type="checkbox"/>
<input type="checkbox"/> 81 <i>Catantixia colla punctata</i> Lathy & Rosenberg, 1912			PE	<input checked="" type="checkbox"/>
<input type="checkbox"/> 82 <i>Catantixia collina collina</i> F. Brown, 1939			PE	<input checked="" type="checkbox"/>
<input type="checkbox"/> 83 <i>Catantixia cora</i> (Lucas, 1852)			PE	<input checked="" type="checkbox"/>
<input type="checkbox"/> 84 <i>Catantixia ctemene strigosa</i> A. Butler, 1896			PE	<input checked="" type="checkbox"/>
<input type="checkbox"/> 85 <i>Catantixia chelidonis chelidonis</i> (Hopffer, 1874)			PE-BO	<input checked="" type="checkbox"/>
<input type="checkbox"/> 86 <i>Catantixia eximia lamasi</i> (Eitschberger & Racheli, 1998)			PE	<input checked="" type="checkbox"/>
<input type="checkbox"/> 87 <i>Catantixia manco manco</i> (E. Doubleday, 1848)			PE-BO	<input checked="" type="checkbox"/>
<input type="checkbox"/> 88 <i>Catantixia marcapita</i> Röber, 1909			PE-BO	<input checked="" type="checkbox"/>
<input type="checkbox"/> 89 <i>Catantixia modesta</i> (Lucas, 1852)			PE	<input checked="" type="checkbox"/>
<input type="checkbox"/> 90 <i>Catantixia paucartambo</i> (Eitschberger & T. Racheli, 1998)			PE	<input checked="" type="checkbox"/>
<input type="checkbox"/> 91 <i>Catantixia pieris intermedia</i> Lathy & Rosenberg, 1912			PE	<input checked="" type="checkbox"/>
<input type="checkbox"/> 92 <i>Catantixia pinava pinava</i> (E. Doubleday, 1847)			PE-BO	<input checked="" type="checkbox"/>
<input type="checkbox"/> 93 <i>Catantixia similis</i> Lathy & Rosenberg, 1912			PE	<input checked="" type="checkbox"/>
<input type="checkbox"/> 94 <i>Catantixia sinapina sinapina</i> A. Butler, 1896			SE PE	<input checked="" type="checkbox"/>
<input type="checkbox"/> 95 <i>Catantixia sinapina</i> A. Butler, 1896			PE	<input type="checkbox"/>
<input type="checkbox"/> 96 <i>Catantixia smithia</i> F. Brown & Gabriel, 1939			PE	<input checked="" type="checkbox"/>
<input type="checkbox"/> 97 <i>Catantixia suasa</i> Röber, 1908			PE-BO	<input checked="" type="checkbox"/>
<input type="checkbox"/> 98 <i>Catantixia superba</i> Lathy & Rosenberg, 1912			PE	<input checked="" type="checkbox"/>
<input type="checkbox"/> 99 <i>Catantixia susiana galbinea</i> Eitschberger & T. Racheli, 1998			PE	<input checked="" type="checkbox"/>
<input type="checkbox"/> 100 <i>Catantixia toca</i> (E. Doubleday, 1847)			PE-BO	<input checked="" type="checkbox"/>
<input type="checkbox"/> 101 <i>Catantixia watkinsi</i> Lathy & Rosenberg, 1912			PE	<input checked="" type="checkbox"/>
<input type="checkbox"/> 102 <i>Hesperocharis marchalii</i> (Guérin-Méneville, [1844])			VZ-AR	<input checked="" type="checkbox"/>
<input type="checkbox"/> 103 <i>Leodonta dysoni</i> Doubleday, 1847			CR-PE	<input checked="" type="checkbox"/>
<input type="checkbox"/> 104 <i>Leodonta tagaste peruana</i> Bollino, 2010			PE-BO	<input type="checkbox"/>
<input type="checkbox"/> 105 <i>Leodonta tellane</i> (Hewitson, 1860)			CR-PE	<input checked="" type="checkbox"/>
<input type="checkbox"/> 106 <i>Leodonta zenobia monticola</i> Joicey & Talbot, 1918			PE	<input type="checkbox"/>
<input type="checkbox"/> 107 <i>Leptophobia aripa elodina</i> (Röber, 1908)			PE-BO, BR, AR	<input checked="" type="checkbox"/>
<input type="checkbox"/> 108 <i>Leptophobia diaguita</i> Jörgensen, 1916			EC-PE, AR	<input type="checkbox"/>

Mariposas de Estacion Biologica Wayqecha

	Especie, subespecie, autor Species, subspecies, author	Género anterior Previous genus	Sublocalidad Sublocality	Rango Range	Foto Photo
<input type="checkbox"/>	109 <i>Leptophobia eleone luca</i> Fruhstorfer, 1907			EC-BO	<input checked="" type="checkbox"/>
<input type="checkbox"/>	110 <i>Leptophobia eleusis mollitica</i> Fruhstorfer, 1908			EC-BO	<input type="checkbox"/>
<input type="checkbox"/>	111 <i>Leptophobia eucozma</i> (Erschoff, 1875)			PE	<input type="checkbox"/>
<input type="checkbox"/>	112 <i>Leptophobia helena hughesi</i> Lamas, 2003			PE	<input type="checkbox"/>
<input type="checkbox"/>	113 <i>Leptophobia penthica</i> (Kollar, 1850)			VZ-BO	<input checked="" type="checkbox"/>
<input type="checkbox"/>	114 <i>Leptophobia philoma subargentea</i> Butler, 1898			EC-BO	<input checked="" type="checkbox"/>
<input type="checkbox"/>	115 <i>Leptophobia tovaria gina</i> Fruhstorfer, 1908			PE	<input type="checkbox"/>
<input type="checkbox"/>	116 <i>Mathania agasicles agasicles</i> (Hewitson, 1874)			PE-BO	<input type="checkbox"/>
<input type="checkbox"/>	117 <i>Phulia nymphula</i> (Blanchard, 1852)			PE-BO,AR,CH	<input type="checkbox"/>
<input type="checkbox"/>	118 <i>Tatochila autodice</i> (Hübner, 1818)			PE-BR,CH,AR	<input checked="" type="checkbox"/>
<input type="checkbox"/>	119 <i>Tatochila mariae</i> Herrera, 1970			PE-CH	<input type="checkbox"/>
<input type="checkbox"/>	120 <i>Tatochila xanthodice paucar</i> Lamas, 1981			PE	<input checked="" type="checkbox"/>

Especie, subespecie, autor
Species, subspecies, author

Género anterior Sublocalidad Rango
Previous genus Sublocality Range

Foto
Photo

Familia - Family

Riodinidae

lunes, 7 de noviembre de 2022

Subfamilia - Subfamily

Nemeobiinae

Tribu - Tribe

Euselasini

Subtribu - Subtribe

Sin Subtribu

121 *Pelolasia fervida fervida* (Butler, 1874) *Euselasia* VZ-BO,BR

Subfamilia - Subfamily

Riodininae

Tribu - Tribe

Eurybiini

Subtribu - Subtribe

Mesosemiina - Napaea

122 *Ithomiola tanos* (Stichel, 1910) CO-BO

Subtribu - Subtribe

Mesosemiina - Mesosemia

123 *Mesosemia zorea toparcha* Stichel, 1910 PE

Tribu - Tribe

Emesidini

Subtribu - Subtribe

Sin Subtribu

124 *Emesis angularis* Hewitson, 1870 EC-BO,AR

Especie, subespecie, autor Species, subspecies, author	Género anterior Previous genus	Sublocalidad Sublocality	Rango Range	Foto Photo
Tribu - Tribe Riodinini				
Subtribu - Subtribe Sin Subtribu				
<input type="checkbox"/> 125 <i>Baeotis creusis</i> Hewitson, 1874			PE-BO	<input checked="" type="checkbox"/>
<input type="checkbox"/> 126 <i>Necyria bellona whitelyiana</i> Druce, 1874			S PE	<input checked="" type="checkbox"/>
<input type="checkbox"/> 127 <i>Rhetus dysonii psecas</i> (Saunders, 1850)			CO-BO,BR	<input checked="" type="checkbox"/>

Especie, subespecie, autor
Species, subspecies, author

Género anterior Sublocalidad Rango
Previous genus Sublocality Range

Foto
Photo

Familia - Family

Lycaenidae

lunes, 7 de noviembre de 2022

Subfamilia - Subfamily

Theclinae

Tribu - Tribe
Eumaeini

Subtribu - Subtribe

Eumaeina

<input type="checkbox"/>	128 <i>Micandra aegides</i> (C. Felder & R. Felder, 1865)		VZ-PE	<input checked="" type="checkbox"/>
<input type="checkbox"/>	129 <i>Micandra comae</i> (H. Druce, 1907)		CO-PE	<input checked="" type="checkbox"/>
<input type="checkbox"/>	130 <i>Micandra dignota</i> (Draudt, 1919)		CO-BO	<input checked="" type="checkbox"/>

Subtribu - Subtribe

Rhammina

<input type="checkbox"/>	131 <i>Johnsonita pardoa</i> (D'Abbrera, 1995)		VZ-BO	<input checked="" type="checkbox"/>
<input type="checkbox"/>	132 <i>Johnsonita zbkova</i> Bálint, et al, 2021		PE	<input type="checkbox"/>
<input type="checkbox"/>	133 <i>Podanotum wayqecha</i> (Torres & Johnson, 1996)	<i>Lamprospilus</i>	PE	<input checked="" type="checkbox"/>
<input type="checkbox"/>	134 <i>Rhamma arria</i> (Hewitson, 1870)		VZ-BO,AR	<input checked="" type="checkbox"/>
<input type="checkbox"/>	135 <i>Rhamma aurugo</i> (Draudt, 1919)		PE	<input checked="" type="checkbox"/>
<input type="checkbox"/>	136 <i>Rhamma familiaris</i> (K. Johnson, 1991)	<i>Paralustrus</i>	CO-BO	<input checked="" type="checkbox"/>
<input type="checkbox"/>	137 <i>Rhamma hybla</i> (Druce, 1907)	<i>Shapiroana</i>	CO-PE	<input checked="" type="checkbox"/>
<input type="checkbox"/>	138 <i>Rhamma inexpectata</i> K. Johnson, 1992		PE	<input type="checkbox"/>
<input type="checkbox"/>	139 <i>Rhamma livida</i> Torres & K. Johnson, 1997		CO-PE	<input type="checkbox"/>
<input type="checkbox"/>	140 <i>Rhamma nigrasarotina</i> K. Johnson, 1992		PE-BO,AR	<input type="checkbox"/>
<input type="checkbox"/>	141 <i>Rhamma tarma</i> K. Johnson, 1992		PE	<input type="checkbox"/>

Subtribu - Subtribe

Timaetina

<input type="checkbox"/>	142 <i>Penaincisalia acjambamba</i> (Bálint, Boyer & Wojtusiak, 2006)	<i>Abloxurina</i>	PE	<input checked="" type="checkbox"/>
<input type="checkbox"/>	143 <i>Penaincisalia amatista</i> (Dognin, 1895)	<i>Abloxurina</i>	EC-PE	<input checked="" type="checkbox"/>
<input type="checkbox"/>	144 <i>Penaincisalia culminicola</i> (Staudinger, 1894)		PE-BO	<input checked="" type="checkbox"/>
<input type="checkbox"/>	145 <i>Penaincisalia duviolsi</i> (Bálint, Boyer & Wojtusaik, 2006)	<i>Abloxurina</i>	PE	<input type="checkbox"/>
<input type="checkbox"/>	146 <i>Penaincisalia loxurina</i> (C. Felder & R. Felder, 1865)	<i>Thecloxurina</i>	CO-BO,VZ,AR	<input checked="" type="checkbox"/>

	Especie, subespecie, autor Species, subspecies, author	Género anterior Previous genus	Sublocalidad Sublocality	Rango Range	Foto Photo
<input type="checkbox"/>	147 <i>Penaincisalia magnifica</i> (K. Johnson, 1992)	<i>Thecloxurina</i>		CO-PE	<input type="checkbox"/>
<input type="checkbox"/>	148 <i>Penaincisalia purpurea</i> (K. Johnson, 1992)	<i>Pons</i>		EC-PE	<input checked="" type="checkbox"/>
<input type="checkbox"/>	149 <i>Timaeta boyeropampa</i> (Bálint & Wojtusiak, 2010)			PE	<input type="checkbox"/>
<input type="checkbox"/>	150 <i>Timaeta molinopampa</i> (Bálint & Wojtusiak, 2000)	<i>Jagiello</i>		S EC-PE	<input type="checkbox"/>
<input type="checkbox"/>	151 <i>Timaeta pilosa</i> Robbins & R. Busby, 2008			EC-PE	<input type="checkbox"/>
<input type="checkbox"/>	152 <i>Timaeta timaeus</i> (C. Felder & R. Felder, 1865)			CO-BO	<input checked="" type="checkbox"/>
Subtribu - Subtribe					
Atlidina					
<input type="checkbox"/>	153 <i>Atlides havila</i> (Hewitson, 1865)			CO-BO	<input checked="" type="checkbox"/>
Subtribu - Subtribe					
Jantheclina					
<input type="checkbox"/>	154 <i>Laothus viridicans</i> (C. Felder & R. Felder, 1865)			VZ-BO	<input checked="" type="checkbox"/>
Subtribu - Subtribe					
Calycopidina					
<input type="checkbox"/>	155 <i>Camissecla pactya</i> (Hewitson, 1874)			CO-BO	<input checked="" type="checkbox"/>
<input type="checkbox"/>	156 <i>Lamprospilus nicetus</i> C. Felder & R. Felder, 1865			VZ-BO	<input checked="" type="checkbox"/>
Subtribu - Subtribe					
Strymonina					
<input type="checkbox"/>	157 <i>Strymon davara</i> (Hewitson, 1868)			EC-BO, BR	<input checked="" type="checkbox"/>
Subtribu - Subtribe					
Callophryidina					
<input type="checkbox"/>	158 <i>Cyanophrys banosensis</i> (Clench, 1944)			EC-PE	<input checked="" type="checkbox"/>
<input type="checkbox"/>	159 <i>Erora nana</i> (C. Felder & R. Felder, 1865)			CO-PE, GF	<input type="checkbox"/>
<input type="checkbox"/>	160 <i>Thaeides muela</i> (Dyar, 1913)			EC-BO, CH	<input checked="" type="checkbox"/>
Subfamilia - Subfamily					
Polyommatainae					
Tribu - Tribe					
Polyommataini					
Subtribu - Subtribe					
Sin Subtribu					
<input type="checkbox"/>	161 <i>Itylos pacis</i> Draudt, 1921	<i>Madeleinea</i>		PE-BO	<input checked="" type="checkbox"/>
<input type="checkbox"/>	162 <i>Leptotes callanga</i> (Dyar, 1913)			PE-BO	<input checked="" type="checkbox"/>

Especie, subespecie, autor Species, subspecies, author	Género anterior Previous genus	Sublocalidad Sublocality	Rango Range	Foto Photo
---	-----------------------------------	-----------------------------	----------------	---------------

Familia - Family

Nymphalidae

lunes, 7 de noviembre de 2022

Subfamilia - Subfamily

Danainae

Tribu - Tribe

Danaini

Subtribu - Subtribe

Sin Subtribu

<input type="checkbox"/>	163 <i>Lycorea ilione phenarete</i> (E. Doubleday, [1847])	PE-BO	<input checked="" type="checkbox"/>
--------------------------	--	-------	-------------------------------------

Tribu - Tribe

Ithomiini

Subtribu - Subtribe

Melinaeina

<input type="checkbox"/>	164 <i>Eutresis hyperia imitatrix</i> Staudinger, 1876	EC-BO	<input type="checkbox"/>
--------------------------	--	-------	--------------------------

Subtribu - Subtribe

Methonina

<input type="checkbox"/>	165 <i>Methona maxima nigerrima</i> W. Forbes, 1944)	PE	<input checked="" type="checkbox"/>
--------------------------	--	----	-------------------------------------

Subtribu - Subtribe

Athesitina

<input type="checkbox"/>	166 <i>Patricia deryllidas</i> (Hewitson, 1864)	VZ-PE	<input checked="" type="checkbox"/>
--------------------------	---	-------	-------------------------------------

Subtribu - Subtribe

Ithomiina

<input type="checkbox"/>	167 <i>Ithomia eleonora</i> Haensch, 1905	PE-BO	<input checked="" type="checkbox"/>
--------------------------	---	-------	-------------------------------------

<input type="checkbox"/>	168 <i>Ithomia ellara</i> Hewitson, 1874	PE-BO	<input checked="" type="checkbox"/>
--------------------------	--	-------	-------------------------------------

<input type="checkbox"/>	169 <i>Ithomia terra terra</i> Hewitson, [1853]	VZ-BO	<input checked="" type="checkbox"/>
--------------------------	---	-------	-------------------------------------

Subtribu - Subtribe

Napeogenina

<input type="checkbox"/>	170 <i>Napeogenes flossina</i> A. Butler, 1873	CO-BO	<input type="checkbox"/>
--------------------------	--	-------	--------------------------

<input type="checkbox"/>	171 <i>Napeogenes harbona domiduca</i> (Hewitson, 1876)	PE-BO	<input checked="" type="checkbox"/>
--------------------------	---	-------	-------------------------------------

	Especie, subespecie, autor Species, subspecies, author	Género anterior Previous genus	Sublocalidad Sublocality	Rango Range	Foto Photo
<input type="checkbox"/>	172 <i>Napeogenes larilla</i> (Hewitson, [1877])			VZ-PE	<input checked="" type="checkbox"/>
Subtribu - Subtribe					
Oleriina					
<input type="checkbox"/>	173 <i>Oleria athalina athalina</i> (Staudinger, [1884])			PE	<input checked="" type="checkbox"/>
<input type="checkbox"/>	174 <i>Oleria attalia attalia</i> (Hewitson, 1855)			PE-BO	<input checked="" type="checkbox"/>
<input type="checkbox"/>	175 <i>Oleria tremona schoenfelderi</i> Baumann, 1985			PE-BO	<input checked="" type="checkbox"/>
Subtribu - Subtribe					
Dircennina					
<input type="checkbox"/>	176 <i>Dircenna adina xanthophane</i> Hopffer, 1874			PE-BO	<input type="checkbox"/>
<input type="checkbox"/>	177 <i>Episcada apuleia cora</i> Haensch, 1909			PE-BO	<input checked="" type="checkbox"/>
<input type="checkbox"/>	178 <i>Hyalenna paradoxa catenata</i> (Kaye, 1918)			PE	<input type="checkbox"/>
<input type="checkbox"/>	179 <i>Pteronymia alida</i> (Hewitson, 1855)			VZ-BO	<input checked="" type="checkbox"/>
<input type="checkbox"/>	180 <i>Pteronymia alina</i> Haensch, 1909			EC-BO	<input type="checkbox"/>
<input type="checkbox"/>	181 <i>Pteronymia andreas</i> (Weeks, 1901)			CO-BO	<input checked="" type="checkbox"/>
<input type="checkbox"/>	182 <i>Pteronymia serrata</i> Haensch, 1903			CO-PE	<input checked="" type="checkbox"/>
<input type="checkbox"/>	183 <i>Pteronymia thabena denticulata</i> Haensch, 1905			EC-BO	<input checked="" type="checkbox"/>
<input type="checkbox"/>	184 <i>Pteronymia ticida yungava</i> Haensch, 1905			PE-BO	<input checked="" type="checkbox"/>
Subtribu - Subtribe					
Godyridina					
<input type="checkbox"/>	185 <i>Godyris crinippa nubilosa</i> Brabant, 2004			PE	<input checked="" type="checkbox"/>
<input type="checkbox"/>	186 <i>Godyris panthyale</i> (C. Felder & R. Felder, 1862)			VZ-PE	<input checked="" type="checkbox"/>
<input type="checkbox"/>	187 <i>Greta andromica andania</i> (Hopffer, 1874)			EC-BO	<input checked="" type="checkbox"/>
<input type="checkbox"/>	188 <i>Hypomenitis enigma koechlini</i> Lamas, 2003	<i>Greta</i>		PE	<input checked="" type="checkbox"/>
<input type="checkbox"/>	189 <i>Hypomenitis gardneri</i> (Weeks, 1901)	<i>Greta</i>		EC-BO	<input checked="" type="checkbox"/>
<input type="checkbox"/>	190 <i>Hypomenitis ortygia</i> (Weymer, 1890)	<i>Greta</i>		VZ-BO	<input type="checkbox"/>
<input type="checkbox"/>	191 <i>Hypomenitis theudelinda cyrcilla</i> (Hewitson, 1874)	<i>Greta</i>		PE-BO	<input type="checkbox"/>
<input type="checkbox"/>	192 <i>Veladyris electrea</i> (M. Brabant, 2004)			EC-PE	<input type="checkbox"/>
<input type="checkbox"/>	193 <i>Velamysta pennina</i> (Hewitson, 1855)			PE-BO	<input checked="" type="checkbox"/>
<input type="checkbox"/>	194 <i>Velamysta pupilla</i> (Hewitson, 1874)			CO-BO	<input checked="" type="checkbox"/>

Subfamilia - Subfamily

Heliconiinae

Tribu - Tribe

Acraeini

Subtribu - Subtribe

Sin Subtribu

	Especie, subespecie, autor Species, subspecies, author	Género anterior Previous genus	Sublocalidad Sublocality	Rango Range	Foto Photo
<input type="checkbox"/>	195 <i>Altinote alcione sodalis</i> (A. Butler, 1877)			PE	<input checked="" type="checkbox"/>
<input type="checkbox"/>	196 <i>Altinote dicaeus eurus</i> (Jordan, 1910)			PE	<input checked="" type="checkbox"/>
<input type="checkbox"/>	197 <i>Altinote eresia eresina</i> (Hopffer, 1874)			EC-BO	<input checked="" type="checkbox"/>
<input type="checkbox"/>	198 <i>Altinote griseata</i> (A. Butler, 1873)			PE	<input checked="" type="checkbox"/>
<input type="checkbox"/>	199 <i>Altinote momina</i> (Jordan, 1910)			EC?-PE	<input checked="" type="checkbox"/>
<input type="checkbox"/>	200 <i>Altinote negra demonica</i> (Hopffer, 1874)			EC-BO	<input type="checkbox"/>

Tribu - Tribe
Heliconiini

Subtribu - Subtribe
Sin Subtribu

<input type="checkbox"/>	201 <i>Dione glycera</i> (C. Felder & R. Felder, 1861)			VZ-BO,AR	<input checked="" type="checkbox"/>
<input type="checkbox"/>	202 <i>Philaethria ostara</i> (Röber, 1906)			VZ-BO	<input checked="" type="checkbox"/>
<input type="checkbox"/>	203 <i>Podotricha telesiphe</i> Hewitson, 1867			CO-BO	<input type="checkbox"/>

Tribu - Tribe
Argynnini

Subtribu - Subtribe
Sin Subtribu

<input type="checkbox"/>	204 <i>Yramea inca</i> (Staudinger, 1894)			PE-BO,AR	<input type="checkbox"/>
<input type="checkbox"/>	205 <i>Yramea inca inca</i> (Staudinger, 1894)			PE-BO	<input type="checkbox"/>

Subfamilia - Subfamily
Limnitiidae

Tribu - Tribe
Limnitiini

Subtribu - Subtribe
Sin Subtribu

<input type="checkbox"/>	206 <i>Adelpha alala negra</i> (C. Felder & R. Felder, 1862)			CO C-AR	<input checked="" type="checkbox"/>
<input type="checkbox"/>	207 <i>Adelpha argentea</i> Willmott & J. Hall, 1995			CO-BO	<input checked="" type="checkbox"/>
<input type="checkbox"/>	208 <i>Adelpha aricia aricia</i> (Hewitson, 1847)			E slope S PE-BO	<input checked="" type="checkbox"/>
<input type="checkbox"/>	209 <i>Adelpha lycorias lara</i> (Hewitson, 1850)			VZ-BO,BR,AR	<input checked="" type="checkbox"/>
<input type="checkbox"/>	210 <i>Adelpha olynthia</i> (C. Felder & R. Felder, 1867)			VZ-BO,BR	<input checked="" type="checkbox"/>
<input type="checkbox"/>	211 <i>Adelpha saundersii helepecki</i> Weeks, 1901			CO-BO	<input checked="" type="checkbox"/>
<input type="checkbox"/>	212 <i>Adelpha seriphia thersia</i> Fruhstorfer, 1915			BO	<input type="checkbox"/>
<input type="checkbox"/>	213 <i>Adelpha thessalia thessalia</i> (C. Felder & R. Felder, 1867)			CO-BO,BR	<input checked="" type="checkbox"/>

Espece, subespece, autor Species, subspecies, author	Género anterior Previous genus	Sublocalidad Sublocality	Rango Range	Foto Photo
Subfamilia - Subfamily Biblidinae				
Tribu - Tribe Catonephelini				
Subtribu - Subtribe Sin Subtribu				
<input type="checkbox"/> 214 <i>Catonephele chromis chromis</i> (E. Doubleday, [1848])			VZ-BO, BR	<input checked="" type="checkbox"/>
<input type="checkbox"/> 215 <i>Cybdelis mnasyllus thrasylla</i> C. Felder & R. Felder, 1859			EC-PE	<input checked="" type="checkbox"/>
Tribu - Tribe Epiphelini				
Subtribu - Subtribe Sin Subtribu				
<input type="checkbox"/> 216 <i>Epiphile boliviana boliviana</i> Röber, 1914			PE-BO	<input checked="" type="checkbox"/>
Tribu - Tribe Callicorini				
Subtribu - Subtribe Sin Subtribu				
<input type="checkbox"/> 217 <i>Diaethria neglecta neglecta</i> (Salvin, 1869)			CO-BO, AR	<input checked="" type="checkbox"/>
<input type="checkbox"/> 218 <i>Orophila cecidas</i> (Hewitson, 1869)			EC-PE	<input checked="" type="checkbox"/>
<input type="checkbox"/> 219 <i>Orophila diotima</i> (Hewitson, 1852)			PE-BO	<input checked="" type="checkbox"/>
<input type="checkbox"/> 220 <i>Perisama calamis</i> (Hewitson, 1869)			PE-BO	<input checked="" type="checkbox"/>
<input type="checkbox"/> 221 <i>Perisama canoma canoma</i> H. Druce, 1874			PE	<input checked="" type="checkbox"/>
<input type="checkbox"/> 222 <i>Perisama comnena comnena</i> (Hewitson, 1868)			PE-BO	<input checked="" type="checkbox"/>
<input type="checkbox"/> 223 <i>Perisama dorbignyi jurinei</i> (Guenée, 1872)			PE-BO	<input checked="" type="checkbox"/>
<input type="checkbox"/> 224 <i>Perisama humboldtii tringa</i> (Guenée, 1872)			EC-BO	<input checked="" type="checkbox"/>
<input type="checkbox"/> 225 <i>Perisama morona moronina</i> Röber, 1915			PE	<input checked="" type="checkbox"/>
<input type="checkbox"/> 226 <i>Perisama philinus philinus</i> E. Doubleday, 1849			PE-BO	<input checked="" type="checkbox"/>
Subfamilia - Subfamily Nymphalinae				

Especie, subespecie, autor Species, subspecies, author	Género anterior Previous genus	Sublocalidad Sublocality	Rango Range	Foto Photo
Tribu - Tribe Nymphalini				
Subtribu - Subtribe Sin Subtribu				
<input type="checkbox"/> 227 <i>Hypanartia cinderella</i> Lamas, Willmott & J. Hall, 2001			VZ-BO	<input checked="" type="checkbox"/>
<input type="checkbox"/> 228 <i>Hypanartia christophori</i> (Jasiński, 1998)			S EC-BO	<input checked="" type="checkbox"/>
<input type="checkbox"/> 229 <i>Hypanartia dione dione</i> (Latreille, [1813])			CO-PE,AR	<input checked="" type="checkbox"/>
<input type="checkbox"/> 230 <i>Hypanartia kefersteini</i> (E. Doubleday, [1847])			VZ-BO	<input checked="" type="checkbox"/>
<input type="checkbox"/> 231 <i>Hypanartia lethe lethe</i> (Fabricius, 1793)			US(S Tx)-AR	<input checked="" type="checkbox"/>
<input type="checkbox"/> 232 <i>Hypanartia lindigii</i> (C. Felder & R. Felder, 1862)			CO-PE	<input checked="" type="checkbox"/>
<input type="checkbox"/> 233 <i>Vanessa altissima</i> (Rosenberg & Talbot, 1914)			EC-BO,AR	<input checked="" type="checkbox"/>
<input type="checkbox"/> 234 <i>Vanessa braziliensis</i> (Moore, 1883)			VZ-AR	<input checked="" type="checkbox"/>
<input type="checkbox"/> 235 <i>Vanessa carye</i> (Hübner, [1812])			VZ-PY,AR	<input checked="" type="checkbox"/>
Tribu - Tribe Victorinini				
Subtribu - Subtribe Sin Subtribu				
<input type="checkbox"/> 236 <i>Siproeta epaphus epaphus</i> (Latreille, [1813])			US(S Tx)-PE,AR	<input checked="" type="checkbox"/>
Tribu - Tribe Junoniini				
Subtribu - Subtribe Sin Subtribu				
<input type="checkbox"/> 237 <i>Junonia vestina</i> C. Felder & R. Felder, 1867			CO-BO,AR	<input checked="" type="checkbox"/>
Tribu - Tribe Melitaeini				
Subtribu - Subtribe Sin Subtribu				
<input type="checkbox"/> 238 <i>Gnathotriche mundina mundina</i> (H. Druce, 1876)			PE	<input checked="" type="checkbox"/>
Subfamilia - Subfamily Charaxinae				

Especie, subespecie, autor Species, subspecies, author	Género anterior Previous genus	Sublocalidad Sublocality	Rango Range	Foto Photo
Tribu - Tribe Charaxini				
Subtribu - Subtribe Sin Subtribu				
<input type="checkbox"/> 239 <i>Fountainea titan caudata</i> (Röber, 1916)			PE	<input checked="" type="checkbox"/>
<input type="checkbox"/> 240 <i>Fountainea tyrianthina</i> (Salvin & Godman, 1868)	<i>Polygrapha</i>		EC-BO	<input checked="" type="checkbox"/>
<input type="checkbox"/> 241 <i>Memphis alberta</i> (H. Druce, 1876)			PE-BO	<input checked="" type="checkbox"/>
Tribu - Tribe Preponini				
Subtribu - Subtribe Sin Subtribu				
<input type="checkbox"/> 242 <i>Archaeoprepona chromus</i> (Guérin-Méneville, [1844])			VZ-BO, BR, AR	<input checked="" type="checkbox"/>
<input type="checkbox"/> 243 <i>Prepona praeneste buckleyana</i> Hewitson, 1876			PE-BO	<input checked="" type="checkbox"/>
Subfamilia - Subfamily Satyrinae				
Tribu - Tribe Morphini				
Subtribu - Subtribe Sin Subtribu				
<input type="checkbox"/> 244 <i>Morpho lympharis lympharis</i> A. Butler, 1873			PE	<input checked="" type="checkbox"/>
Tribu - Tribe Brassolini				
Subtribu - Subtribe Sin Subtribu				
<input type="checkbox"/> 245 <i>Caligo oberthurii</i> (Deyrolle, 1872)			CO-PE	<input checked="" type="checkbox"/>
<input type="checkbox"/> 246 <i>Opoptera arsippe arsippe</i> (Hopffer, 1874)			PE-BO	<input checked="" type="checkbox"/>
Tribu - Tribe Satyrini				
Subtribu - Subtribe Euptychiina				

	Especie, subespecie, autor <i>Species, subspecies, author</i>	Género anterior <i>Previous genus</i>	Sublocalidad <i>Sublocality</i>	Rango <i>Range</i>	Foto <i>Photo</i>
<input type="checkbox"/>	247 <i>Forsterinaria pichita</i> Peña & Lamas, 2005			E EC-PE	<input type="checkbox"/>
<input type="checkbox"/>	248 <i>Forsterinaria rustica rustica</i> (A. Butler, 1868)			EC-BO	<input checked="" type="checkbox"/>
<input type="checkbox"/>	249 <i>Hermeuptychia harmonia</i> (A. Butler, 1867)			CR-PE	<input checked="" type="checkbox"/>
<input type="checkbox"/>	250 <i>Hermeuptychia maimoune</i> (A. Butler, 1870)			EC-PE	<input type="checkbox"/>
<input type="checkbox"/>	251 <i>Manerebia cyclopella</i> Staudinger, 1897			PE-BO,AR	<input checked="" type="checkbox"/>
<input type="checkbox"/>	252 <i>Manerebia insulsa</i> (Hewitson, 1874)			BO	<input type="checkbox"/>
<input type="checkbox"/>	253 <i>Manerebia reducta</i> (F. Brown, 1944)			PE	<input type="checkbox"/>
<input type="checkbox"/>	254 <i>Manerebia rubescens</i> (A. Butler, 1873)			EC-PE	<input checked="" type="checkbox"/>
<input type="checkbox"/>	255 <i>Oressinoma sorata</i> Salvin & Godman, 1868			PE-BO	<input checked="" type="checkbox"/>
<input type="checkbox"/>	256 <i>Pseudodebis puritana</i> (Weeks, 1902)			CO-BO,BR	<input checked="" type="checkbox"/>
Subtribu - Subtribe					
Pronophilina					
<input type="checkbox"/>	257 <i>Antopedaliodes antonia</i> (Staudinger, 1897)			PE-BO	<input type="checkbox"/>
<input type="checkbox"/>	258 <i>Apexacuta astoreth</i> (Thieme, 1907)			PE-BO	<input checked="" type="checkbox"/>
<input type="checkbox"/>	259 <i>Argyrophorus lamna</i> Thieme, 1904			PE-BO	<input type="checkbox"/>
<input type="checkbox"/>	260 <i>Corades anfortas</i> (Thieme, 1907)			VZ-PE	<input type="checkbox"/>
<input type="checkbox"/>	261 <i>Corades argentata</i> Butler, 1868			PE-BO	<input checked="" type="checkbox"/>
<input type="checkbox"/>	262 <i>Corades cistene generosa</i> Thieme, 1907			CO-BO	<input checked="" type="checkbox"/>
<input type="checkbox"/>	263 <i>Corades enyo almo</i> Thieme, 1907			CO-BO	<input checked="" type="checkbox"/>
<input type="checkbox"/>	264 <i>Corades iduna marginalis</i> A. Butler, 1873			PE	<input type="checkbox"/>
<input type="checkbox"/>	265 <i>Corades medeba medeba</i> Hewitson, 1850			PE-BO	<input checked="" type="checkbox"/>
<input type="checkbox"/>	266 <i>Corades melania melania</i> Staudinger, 1894			PE-BO	<input type="checkbox"/>
<input type="checkbox"/>	267 <i>Corades sareba fuscipalga</i> A. Butler, 1873			PE-BO	<input checked="" type="checkbox"/>
<input type="checkbox"/>	268 <i>Corades ulema ulema</i> Hewitson, 1850			S PE-BO	<input checked="" type="checkbox"/>
<input type="checkbox"/>	269 <i>Corderopedaliodes pandates olivieri</i> Pyrcz, 2013			PE	<input checked="" type="checkbox"/>
<input type="checkbox"/>	270 <i>Daedalma boliviana</i> Staudinger, 1897			EC-BO	<input checked="" type="checkbox"/>
<input type="checkbox"/>	271 <i>Daedalma dognini</i> Pyrcz, 2011			PE	<input type="checkbox"/>
<input type="checkbox"/>	272 <i>Druphila venerata</i> (A. Butler, 1873)			PE-BO	<input checked="" type="checkbox"/>
<input type="checkbox"/>	273 <i>Eretris subpunctata</i> (Grose-Smith & W. F. Kirby, 1895)			PE-BO	<input checked="" type="checkbox"/>
<input type="checkbox"/>	274 <i>Junea doraete enipeus</i> (Thieme, 1907)			PE-BO	<input type="checkbox"/>
<input type="checkbox"/>	275 <i>Junea dorinda whitelyi</i> (H. Druce, 1876)			PE-BO	<input type="checkbox"/>
<input type="checkbox"/>	276 <i>Junea dorinda</i> (C. Felder & R. Felder, 1862)			CO-BO	<input checked="" type="checkbox"/>
<input type="checkbox"/>	277 <i>Lasiophila luna</i> Pyrcz, 2006			PE	<input checked="" type="checkbox"/>
<input type="checkbox"/>	278 <i>Lasiophila orbifera orbifera</i> A. Butler, 1868			CO-PE,BO	<input type="checkbox"/>
<input type="checkbox"/>	279 <i>Lasiophila piscina</i> Thieme, 1903			PE	<input type="checkbox"/>
<input type="checkbox"/>	280 <i>Lymanopoda acraeida acraeida</i> A. Butler, 1868			PE-BO,AR	<input checked="" type="checkbox"/>
<input type="checkbox"/>	281 <i>Lymanopoda albomaculata</i> Hewitson, 1861			PE-BO	<input checked="" type="checkbox"/>
<input type="checkbox"/>	282 <i>Lymanopoda apulia</i> Hopffer, 1874			PE-BO	<input checked="" type="checkbox"/>
<input type="checkbox"/>	283 <i>Lymanopoda eubagioides</i> Butler, 1873			PE-BO	<input type="checkbox"/>
<input type="checkbox"/>	284 <i>Lymanopoda ferruginosa ferruginosa</i> A. Butler, 1868			PE-BO	<input checked="" type="checkbox"/>

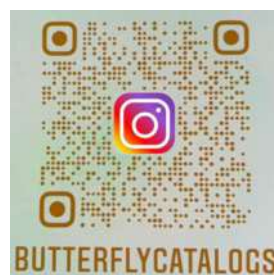
Mariposas de Estacion Biologica Wayqecha

	Especie, subespecie, autor Species, subspecies, author	Género anterior Previous genus	Sublocalidad Sublocality	Rango Range	Foto Photo
<input type="checkbox"/>	285 <i>Lymanopoda hyagnis</i> Weymer, 1911			PE-BO	<input checked="" type="checkbox"/>
<input type="checkbox"/>	286 <i>Lymanopoda obsoleta</i> (Westwood, 1851)			PN-BO	<input checked="" type="checkbox"/>
<input type="checkbox"/>	287 <i>Lymanopoda panacea ocellifera</i> A. Butler, 1873			PE	<input checked="" type="checkbox"/>
<input type="checkbox"/>	288 <i>Lymanopoda translucida umbratilis</i> Rosenberg & Talbot, 1914			S PE	<input checked="" type="checkbox"/>
<input type="checkbox"/>	289 <i>Lymanopoda venosa</i> Butler, 1868			PE-BO	<input checked="" type="checkbox"/>
<input type="checkbox"/>	290 <i>Mygona chyprota</i> (Grose-Smith, 1900)			PE	<input checked="" type="checkbox"/>
<input type="checkbox"/>	291 <i>Neopedaliodes proculeja</i> Thieme, 1905			PE	<input type="checkbox"/>
<input type="checkbox"/>	292 <i>Oxeoschistus leucospilos leucospilos</i> Staudinger, 1876			CO-PE	<input checked="" type="checkbox"/>
<input type="checkbox"/>	293 <i>Panyapedaliodes drymaea</i> (Hewitson, 1858)			CO-BO	<input checked="" type="checkbox"/>
<input type="checkbox"/>	294 <i>Panyapedaliodes mara</i> (Thieme, 1905)			PE-BO	<input type="checkbox"/>
<input type="checkbox"/>	295 <i>Panyapedaliodes muscosa muscosa</i> (Thieme, 1905)			PE-BO	<input checked="" type="checkbox"/>
<input type="checkbox"/>	296 <i>Panyapedaliodes phila pilla</i> Lamas, 2003			PE	<input type="checkbox"/>
<input type="checkbox"/>	297 <i>Panyapedaliodes puma</i> (Thieme, 1905)			PE-BO	<input checked="" type="checkbox"/>
<input type="checkbox"/>	298 <i>Panyapedaliodes rahab</i> (Thieme, 1905)			PE	<input type="checkbox"/>
<input type="checkbox"/>	299 <i>Panyapedaliodes silpa</i> (Thieme, 1905)			PE-BO	<input checked="" type="checkbox"/>
<input type="checkbox"/>	300 <i>Pedaliodes acjanaco</i> Lamas, Viloría & Pyrcz, 2010			PE	<input type="checkbox"/>
<input type="checkbox"/>	301 <i>Pedaliodes ackeri</i> Pyrcz & Viloría, 2008			PE	<input type="checkbox"/>
<input type="checkbox"/>	302 <i>Pedaliodes albutia</i> Thieme, 1905			PE	<input type="checkbox"/>
<input type="checkbox"/>	303 <i>Pedaliodes ampulla</i> Pyrcz & Boyer, 2008			PE	<input type="checkbox"/>
<input type="checkbox"/>	304 <i>Pedaliodes antulla</i> Thieme, 1905			PE	<input checked="" type="checkbox"/>
<input type="checkbox"/>	305 <i>Pedaliodes auraria</i> Thieme, 1905			PE	<input type="checkbox"/>
<input type="checkbox"/>	306 <i>Pedaliodes cledonia</i> Thieme, 1905			BO	<input checked="" type="checkbox"/>
<input type="checkbox"/>	307 <i>Pedaliodes demathani ockendeni</i> Lamas & Viloría, 2008			PE	<input checked="" type="checkbox"/>
<input type="checkbox"/>	308 <i>Pedaliodes ferratilis</i> Butler, 1873			VZ-PE	<input checked="" type="checkbox"/>
<input type="checkbox"/>	309 <i>Pedaliodes hewitsoni primera</i> Weeks, 1901			PE-BO	<input checked="" type="checkbox"/>
<input type="checkbox"/>	310 <i>Pedaliodes molesta</i> Pyrcz, 2004			PE	<input checked="" type="checkbox"/>
<input type="checkbox"/>	311 <i>Pedaliodes niveonota</i> A. Butler, 1873			PE	<input type="checkbox"/>
<input type="checkbox"/>	312 <i>Pedaliodes pactyes</i> (Hewitson, 1874)			PE-BO	<input checked="" type="checkbox"/>
<input type="checkbox"/>	313 <i>Pedaliodes patizathes</i> (Hewitson, 1874)			PE-BO	<input type="checkbox"/>
<input type="checkbox"/>	314 <i>Pedaliodes pausia</i> (Hewitson, 1862)			PE-BO,AR	<input checked="" type="checkbox"/>
<input type="checkbox"/>	315 <i>Pedaliodes peruviana</i> A. Butler, 1873			PE	<input type="checkbox"/>
<input type="checkbox"/>	316 <i>Pedaliodes phaeinomorpha</i> Viloría & Lamas, 2008			PE	<input type="checkbox"/>
<input type="checkbox"/>	317 <i>Pedaliodes phantasia</i> Lamas, Viloría & Pyrcz, 2009			PE	<input type="checkbox"/>
<input type="checkbox"/>	318 <i>Pedaliodes pheres</i> Thieme, 1905			PE-BO	<input type="checkbox"/>
<input type="checkbox"/>	319 <i>Pedaliodes praxithea</i> Hewitson, 1870			CO-BO	<input checked="" type="checkbox"/>
<input type="checkbox"/>	320 <i>Pedaliodes proculeja</i> Thieme, 1905			PE	<input type="checkbox"/>
<input type="checkbox"/>	321 <i>Pedaliodes puma</i> Pyrcz, 2006			PE	<input type="checkbox"/>
<input type="checkbox"/>	322 <i>Pedaliodes simmias</i> Thieme, 1905			PE-BO	<input type="checkbox"/>
<input type="checkbox"/>	323 <i>Pedaliodes transmontana</i> Pyrcz & Viloría, 1999			CO-PE	<input checked="" type="checkbox"/>

Mariposas de Estacion Biologica Wayqecha

	Especie, subespecie, autor Species, subspecies, author	Género anterior Previous genus	Sublocalidad Sublocality	Rango Range	Foto Photo
<input type="checkbox"/>	324 <i>Pronophila cordillera variabilis</i> A. Butler, 1873			PE	<input checked="" type="checkbox"/>
<input type="checkbox"/>	325 <i>Pronophila epidipnis</i> Thieme, 1907			CO,VZ-PE,BO	<input type="checkbox"/>
<input type="checkbox"/>	326 <i>Pronophila unifasciata kennethi</i> Pyrcz, 2005			PE-BO, NE AR	<input type="checkbox"/>
<input type="checkbox"/>	327 <i>Pseudomaniola mirabilis</i> (A. Butler, 1873)			PE	<input type="checkbox"/>
<input type="checkbox"/>	328 <i>Punapedaliodes flavopunctata</i> (Staudinger, 1894)			EC-BO,AR	<input type="checkbox"/>
<input type="checkbox"/>	329 <i>Steremnia agraulis</i> (Weymer, 1912)			PE-BO	<input type="checkbox"/>
<input type="checkbox"/>	330 <i>Steremnia monachella</i> (Weymer, 1911)			CO-BO	<input type="checkbox"/>
<input type="checkbox"/>	331 <i>Steremnia umbracina</i> (A. Butler, 1873)			EC-PE	<input checked="" type="checkbox"/>
<input type="checkbox"/>	332 <i>Steroma bega andensis</i> C. Felder & R. Felder, 1867			CO-BO	<input checked="" type="checkbox"/>
<input type="checkbox"/>	333 <i>Steroma modesta</i> Weymer, 1912			PE-BO,AR	<input checked="" type="checkbox"/>
<input type="checkbox"/>	334 <i>Steroma superba</i> A. Butler, 1868			PE-BO	<input checked="" type="checkbox"/>
<input type="checkbox"/>	335 <i>Viloriodes phrasis</i> (Grose-Smith, 1900)	<i>Pedaliodes</i>		PE-BO	<input type="checkbox"/>

Listado se imprimió el: Lunes, 7 de noviembre de 2022



[aa infLOCALIDAD Listado Taxa CHECKLIST hasta SubTribu](#)

Bibliografía

El Neotrópico por su diversidad de mariposas tiene mucha información publicada en libros y revistas especializadas, esta información nos ha ayudado a construir el catálogo de BioButterfly Database y a identificar muchas de nuestras fotos.

Inicialmente estábamos colocando la bibliografía en cada PDF tratando de asociar los artículos relevantes a cada PDF específico, básicamente si se relaciona con una familia, un país o una localidad. Decidimos hacer una bibliografía general combinada en formato PDF independiente con citas para todas las publicaciones que hemos estado usando de tal manera que sea útil para todos nuestros PDF y al mismo tiempo libere espacio en todos los PDF.

Con el siguiente vínculo acceda al PDF con la bibliografía.:

<https://www.butterflycatalogs.com/neotropical-bibliography.html>

Si se quiere profundizar en la bibliografía del Neotrópico, con artículos de mariposas desde México hasta Argentina, recomendamos un excelente documento recopilado por el Dr. Gerardo Lamas 2022 que se encuentra en la página de Butterflies of America BOA llamado: **An Annotated Bibliography of the Neotropical Butterflies and Skippers (Lepidoptera: Papilionoidea and Hesperioidea) Revised Electronic Edition** que se puede consultar en el siguiente vínculo:

<http://www.butterfliesofamerica.com/L/Biblio.htm>

Permanentemente estamos buscando información que nos ayude a completar la base de datos, especialmente cambios en la taxonomía de las especies, nuevas especies y especies por país o regiones. Agradecemos todas las referencias que nos puedan enviar.

Bibliography

The Neotropics, due to its diversity of butterflies, have a lot of information published in books and specialized magazines. This information has helped us to build the BioButterfly Database catalog and to identify many of our photos.

Initially we were placing the bibliography in each PDF trying to associate the relevant articles to each specific PDF, basically if it related to a family, a country or a locality. We decided to make a general combined bibliography as a separate PDF with citations for all the publications we have been using in such a way that it is useful for all our PDFs and at the same time it frees up space in all the PDFs.

With this link access the PDF with the bibliography:

<https://www.butterflycatalogs.com/neotropical-bibliography.html>

If you want to delve into the Neotropical bibliography, with articles on butterflies from Mexico to Argentina, we recommend an excellent document compiled by Dr. Gerardo Lamas 2022 found on the Butterflies of America BOA page called: **An Annotated Bibliography of the Neotropical Butterflies and Skippers (Lepidoptera: Papilionoidea and Hesperioidea) Revised Electronic Edition** which can be consulted at the following link:

<http://www.butterfliesofamerica.com/L/Biblio.htm>

We are constantly looking for information to help us complete the database, especially changes in the taxonomy of species, new species and species by country or region. We appreciate all the references that you can send us.



Páginas web recomendadas

Existen muchísimas fuentes de información sobre mariposas en Internet, sin embargo, presentamos acá una selección de aquellas recomendadas que puedan dar información complementaria a la bibliografía, las listas de chequeo o las guías, o pueden tener información útil para la identificación o el conocimiento de las mariposas.

Identificación de mariposas - **Butterfly identification**

<https://www.butterflycatalogs.com> (libros de identificación para la región neotropical)
www.neotropicalbutterflies.com (Mariposas del Neotrópico)
<https://www.butterfliesofamerica.com>
fotografías de todos los tipos

Información general de mariposas - **General butterfly information**

<https://www.learnaboutbutterflies.com>

Nombres - **Names**

<https://www.nhm.ac.uk/our-science/data/lepindex/>
<https://www.nic.funet.fi/pub/sci/bio/life/insecta/lepidoptera/>

Plantas hospederas - **Host plants**

<https://www.nhm.ac.uk/our-science/data/hostplants/search/index.dsml>

Inventarios regionales - **Regional inventories**

<http://calydna.com> excelente fotografía/E
<http://www.sangay.eu/es> (Parque Nacional Sangay, Ecuador)
<http://www.cotacachi.eu> (Región de Cotacachi, W Ecuador)
<http://www.loja-zamora.eu/en> (Ecuador)
<https://www.noreste.eu/en/les-papillons> (NE Ecuador)
<http://www.butterfliesofecuador.com/>
<https://papillons-de-guyane.fr/papillons/>

Recommended web pages

There are many sources of information about butterflies on the internet, however, we present here a selection of those recommended that can provide complementary information to the bibliography, the checklists, or the guides, or may have useful information for the identification or knowledge of butterflies.

Otras - **Other**

<https://v3.boldsystems.org> (DNA barcodes)
<http://tolweb.org/tree/>
<https://www.inaturalist.org/>
<https://www.nic.funet.fi/>

Tour de mariposas – **Butterfly tours**

www.butterfliesofcolombia.com
<http://www.mariposabutterflytours.com/>

Specific Families or Genera:

<http://parides.genus.free.fr/syst.html>
<http://www.heliconius.org/2011/neil-rossers-maps-preliminary-versions/>

Euptychiina Checklist:

https://www2.ib.unicamp.br/labor/site/?page_id=1020

Agradecimiento a Fotógrafos

Gran parte de este trabajo se soporta en la base de datos de fotografías de mariposas, que no sería posible sin la colaboración desinteresada de estas personas e instituciones que nos han ayudado, por lo tanto queremos agradecerles por su colaboración y mostrarles que sus fotos son hoy un aporte importante para la ciencia y la conservación.

Acknowledgement to Photographers

Much of this work is supported by the database of photographs of butterflies, which would not be possible without the selfless collaboration of these people and institutions that have helped us, therefore we want to thank them for their collaboration and show them that their photos are today an important contribution to science and conservation.

jueves, 20 de octubre de 2022

Fotógrafos - Photographers

Adam Winer	AWr	Barry Sullender	Bsu	Chris Gardner	CG	Digitalbcom	DBc
Adrian Hoskins	AH	Bart Creemers	BCm	Chris Holtby	CH	dispo	Disp
Ahmet Baytas	AB	Bernard Dupont	BD	Christian Meyn	CM	Dominik Hofer	DHf
Alan Wight	AW	Bernard Hermier	BHm	Christopher Livesay	CL	Don Stoltz	DSt
Albert Thurman	AT	Bert Frenz	BF	Damon Tighe	DT	Doug Danforth	DD
Alberto Esquivel	AE	Beverly Robertson	BRs	Dan Bogar	DB	E Furtado	Efr
Alberto Ruiz	AR	Bill Beck	BBc	Dan Janzen & Winnie Hallwachs	DJW	Ebano Verde Scientific Reserve	EV
Alejandro Bayer	Aby	Bill Berthet	BBt	Dan Jones	DJ	EcoSur = Colegio de la Frontera Sur, Chetumal, Quintana Roo, Mexico	EcSr
Alex & Phil Pemberton	APn	Bill Bouton	BBn	Dan Scheiman	DS	Edison Coley	Ecy
Alex Popovkin	APk	Bill Crins	BC	Dan Wade	DW	Eduardo Carriazo	EC
Alfaro Lopez	Alz	Bill Tyson	BTy	Daniel Jaramillo Ferrer	DJF	Eduardo Carriazo	Ecz
Alice Neild	AIN	Bio Butterfly (IGJ)	BB	Daniel Piedrahita Thiriez	DPT	Eduardo Castro	Ect
Alvaro Jaramillo	AJl	Blair Wainman	BWm	Dave Hanson	DH	Eduardo Castro Escobar	EAC
Amy Johnson	AJ	Blanca Martínez	BMz	Dave Mapp	DM	Eduardo Frick	EF
Amy McAndrews	AM	Bob Behrstock	BBk	Dave Sargeant	DSg	Eduardo LF	Elf
Ana Maria Castaño	AmC	Bob Grosek	BG	David Acosta Silva	DA	Eduardo's	EJ
Anagallis Lai	AnL	Bob Hardwick	BH	David Clulow	DCw	Edward Sha	Esh
Andre Reichmann	ARc	Bob Lewis	BL	David Davidson	DDv	Eerika Schulz	Ekz
Andreas Kay †	Aky	Bob Pease	BP	David Geale	DvG	Eileen Mahler	EM
Andres Felipe Uribe	AFU	Bob Scott	BSt	David Guzman	DGz	Elis Simpson	ES
Andres Miguel Orellana	AMO	Bob Yukich	BY	David Nunnallee	DN	Emilio Constatino	Ecn
Andrew Neild	AN	Bradley Davis	BD	David Parkinson	DPk	Emily Peyton	EP
Andrew Spencer	AS	Bret Whitney	BW	David Powel	DP	Ernst Brockmann,	EB
Andy Ho	Aho	Brian Wetton	BWt	David Reed	DRd	Ezequiel Osvaldo Nuñez Bustos	EZ
Angel G.Vasquez	Avz	Carlos Restrepo	CR	David Robacker	DR	Fabrice Ducordeau	FD
Angelica Vasquez Cruz	AV	Cindy Radamaker	CyR	Deborah Galloway (Deby)	DGw	Felipe Anaya	FA
Anthony Floyd	AF	Claudia Villegas	CV	Dennis Bozza	DBz	Felipe Andrade	FA
Antonio Pessoa	APs	Claudio Miguel Solis Zevallos	CMg	Dennis Paulson	DPs	Ferhat Gundogdu	FG
Artur Anker	AA	Colorado State University Collection	CSUC	Denver Museum of Nature and Science	DMN	Frank Lambert	FL
Augusto Rosa	Ars	Cristobal Andres	CA	Derek Muschalek	DM	Frank West	FW
Barbara Ribble	BR	Cristóbal Ríos-Málaver	CRm	Dick Weeks	DWk	Fred Heath	FH
Barbara Spencer	BSn	Charles Long	CLg	Diego Calderon	DC		
Barbara York	BYk	Charlie Covell	CC				
Barry Scampion	BS						

Fotógrafos - Photographers

Fred Ramsey	FR	Jean-Paul Brouard	JPB	Jose Monzon	JMz	Linda Cooper	LCp
Frederico Acaz Sonntag	FAS	Jeff Bouton	JBn	Joseph Thomson	JT	Linda Honeycutt	LH
Fredy Montero	FM	Jeff Pavlik	JP	Juan Carlos Garcia Morales	JCG	Linda Scott	LS
G. Whiting	GWt	Jenilee Montes	JMn	Juan Carlos Luna	JCL	Lisa Scheinin	LSn
Gabriel Rodriguez	GR	Jennifer Sanders	JS	Juan David Ramirez	JDR	Lizzie Coleman	LCl
Gary Clark	GCK	Jérôme Albre	JA	Juan Guillermo Jaramillo Velasquez	BB	Lorenzo Forbes	LP
Gaspar Danish	GD	Jeronimo Gonzalez	JGz	Juan Jose Arango	JJA	Lori Conrad+C226	LCn
Gaynor Chapman	GCp	Jerry & Linda Harrison	JLH	Judi Ross	JR	Luc Legal	LL
Geoff Woodcock	GW	Jesus Bernal	JB1	Judy McClung	JMC	Luciano Bernardes	LcB
German Muriziasco	GMr	Jesus Garcia	JG	Julia Whitmann	JW	Luis Anderson Ribeiro Leite	LAR
Gernot Kunz	GK	Jhon Jairo Betancur	JB	Julie Craves	JCr	Luis Carlos	Lca
Gil Quintanilla	GQ	Jhonny Zambrano	JZn	Julieta Brambila	JBr	Luis Eduardo Mejia	LEM
Gill Carter	GC	Jim Brock	JB	Karen Nichols	KNc	Luis German Olarte	LGO
Glenn Mahler	GM	Jim Danzenbaker	JDK	Karen Robacker	KRK	Luis Miguel Constantino Chuaire	LMC
Glynn Lowth	GL	Jim Hengeveld	JHg	Karen Yurich	KY	Luisa Mota	LMT
Gottfried Siebel	GS	Jim Hoover	JHv	Kay Wade	KW	Luiz Carlos	LCr
Gregory Nielsen	GN	Jim Snyder	JSn	Keith G	KeG	Maël Dewynter	MDw
Gualberto Becerra	GB	João Amarildo Ranguetti	JoR	Kelly Richers	KR	Marcelo Duarte	MD
Gustavo Accacio	GA	Joao Steck	JSt	Kelly Walker	KWk	Marcos Cesar Campis	MCC
Gustavo Bautista	GBt	Joe Belize	Jo	Ken Kertell	KK	Maria Isabel Weyermans	MIW
Guy Manners	GMn	Joe Schelling	JSI	Kenji Nishida	KN	Maris Midgely	Mmi
Hank Brodtkin †	HB	Johan van't Bosch	JVB	Kevin Hall	KH	Maristela Zamoner	MZ
Hans van Oosterhout	HO	John Bedford	JBf	Kevin Loughlin	KLn	Mark Eising	ME
Harold Greeney	HG	John Dicus	JDs	Kevin Painter	KP	Marta Rubio-Teixeira	MRT
Heiner Ziegler	HZ	John Fox	JF	Kim Davis	KD	Martin Moreno	MM
Heinz Plenge	HP	John Hendrickson	JHk	Kim Garwood	KG	Martin Reed	MR
Herb Clark	HC	John Kemner	JK	Kit Larsen	KL	Martin Schwartz	MSc
Herschel Raney	HR	John MacDonald	JMD	Kris Sookdeo	KS	Mary Torres	MT
Ian Hardy	IH	John Ortega Galvan	JOG	Kristian Svensson	KSv	Mateo Dapa ValleCauca	Mat
Ian Segebarth	IS	John Roberts	JRb	Kristine Wallstrom	KWs	Matias Romero	MRm
Ichiro Nakamura	IN	John Vallender	JV	Kristof Zyskowski	KZ	McGuire Center, Gainesville, FL	McG
INBio = Instituto Nacional de Biodiversidad, Heredia, Costa Rica	INB	John Yerger	JY	Krushnamegh Kunte	KKn	Memo Gomez	MGz
Iosu Anton	IA	Johnnier Arango Bermudez	JAB	Kurt Radamaker	KtR	Michael Campos	MCp
Jacques Erard	JE	Jorge Bizarro	JBz	Lars Andersen	LA	Michael Garcia	MG
Jaime Andres Ferrer	JAF	Jorge J Restrepo	JJ	Laura Murillo Gomez	Lmu	Michael Quiñones	MQ
James Symonds	JSy	Jorge Montejo	JMt	Lauren Zarate	LZ	Michael Sawyers	MSw
Jan Dauphin	JDp	Jorge Perez	Jpe	Lee Ellington	LE	Mike Chapman	MC
Jan Dixon	JDx	Jos Grzybowski	JGy	Leif Gabrielsen	LG	Mike Friel	MF
Jan Harding	JHd	José Aluisio Ribeiro de Freitas	JAR	Leonel Baldoni	LBd	Mike Rickard	MRk
Janet Rathjen	JRj	José Castaño	JCt	Leopoldina Tapasco	Leo	Mike Stangeland	MS
Jay Greenberg	JGr	Jose Cerdeña Gutierrez	JCG	Les Catchick	LC	Mississippi Entomological Museum	MEM
Jean-Claude Petit	JCP	Jose Francisco Garcia	JFG	Lida Lizarazo Medina	LLz	Morton Ross	MRs
Jean-Marc Gayman	JMG			Lina Mejia Correa	LM		

Fotógrafos - Photographers

Museo de Historia Natural Noel Kempff Mercado, Santa Cruz, Bolivia	NKM	Robert Gilson	RGI	Universidad Nacional de Colombia	UNC
Museo de Historia Natural, Lima, Peru	MLm	Robert Lehman	RbL	Universidade Federal do Paraná, Curitiba, Brasil	UFPR
Museum für Naturkunde der Humboldt-Universität Berlin	MNH	Robert Lockett	RLT	Veronica Prida	VP
n Calderon	Cdr	Robert Lockett	RLk	Vicky de Miesner	VM
n Mendez	Mnz	Robert Straub	RSb	Vijay Barve	VJB
Natural History Museum London	MHN	Roberto Greve	RGv	Wanzhou Lei	WL
Neil Bjorklund	NB	Roberto Rezende	RRz	Werner Kunz	WK
Nelson Dobbs	ND	Robinson Noreña Arango	RN	Wilson Lombana Riaño	WLR
Nick Baker	NB	Rodrigo Bernal	RB	Will Carter	WC
Óscar Darío Ruiz Henao	OR	Rodrigo Conte	RCt	William Vargas	WV
Oscar Enciso	OE	Rodrigo Gaviria Obregon	RG	Willie Sekula	WS
P Mollmann	PMn	Roger Rittmaster	RRt	Yuvinka Gareca	YG
Pablo Florez	PF	Roger Robb	RRb		
Pamela Donaldson	PD	Ron Martin	RMt		
Parker Backstom	PkB	Rudy Doderio	RD		
Pat Martin	PM	Sally & Dean Jue	SJ		
Pat Wade	PW	Santiago Mejía Dugand	SM		
Paul Thompson	PT	Scott Olmstead	SO		
Peabody Museum of Natural History, Yale University, New Haven, CT	Pbdy	Shawneen Finnegan	SFn		
Pedro José Cardona Camacho	PC	Sherry Nelson	SN		
Peter Bruce-Jones	PBJ	Shirley Sekarajasingham	SS		
Phil Farrer	PFr	Sidney Dantas de Melo	SDM		
Pia Öberg	PO	Sigrid Drechsel	SD		
Pingchung Lee	PL	Simon Knight	SK		
Priscilla Brodtkin	PB	Stanley Jones	StJ		
Raphael Sobania	RS	Steffen Reichle	SRc		
Renato Mattei	RnM	Stephen Boddington	SBd		
Rick Cech	RC	Steve Cary	SCr		
Rich Hoyer	RH	Steve Daniels	SDs		
Richard Lehman	RL	Steve Stevens	SjS		
Richard Lindstrom †	RLm	Steven Easley	SE		
Richard Raby	RRy	Susan Loose	SL		
Richard Stott	RSt	Terry Gonzales	TGz		
Rob Westerduijn	RW	Terry Stoddard	TSt		
Rob Williams	RWi	Thierry Garcia	TG		
Robert A. Deans	Rob	Thomas Baron	TBn		
Robert Behrstock	RB	Thomas Bentley	TBt		
Robert Gallardo	RGd	Tinio Sanchez	TS		
		Tolo Cesar Alos	TC		
		Tom Horton	THn		
		Tom Murray	TM		
		Tony Hoare †	TH		
		Trevor Ellery	TE		
		Ulf Drechsel	UD		

Agradecimientos

Estas guías y listados de chequeo son el resultado del esfuerzo de un gran número de colaboradores, científicos, aficionados y fotógrafos a quienes damos las gracias, pues sin ellos, estas publicaciones no hubieran sido posible de completar.

A los Doctores Gerardo Lamas y Olaf Mielke quienes han dedicado su vida a la investigación y educación sobre las mariposas del neotrópico.

En la familia HesperIIDae agradecemos especialmente al experto Bernard Hermier por las innumerables horas y páginas de explicaciones y correcciones sin las cuales habría sido imposible hacer este documento.

Al Dr. Keith Willmott por sus consejos en la elaboración de estos trabajos e identificación de fotos. A Jean-Claude Petit por las múltiples adiciones de especies y correcciones para Ecuador. Al Dr Gerardo Lamas y Mike McInnis por la información sobre el parque nacional del Manu.

Agradecemos a los siguientes expertos que generosamente han ayudado con información y en la identificación de algunas fotos que han servido de soporte al listado (en orden alfabético): Stéphane Attal, Dr. Andrew Brower, Prof. James Mallet, Andrew Neild, Gregory Nielsen, Dr. Tomasz Pyrcz, Dr. Robert Robbins, Julián Salazar y Aaron Soh.

A Andrés Arenas por sus consejos y ayuda en la elaboración de la base de datos. A Andrew Neild por sus fotos, recomendaciones y sugerencias. A David Geale por sus innumerables aportes fotográficos. A Juan Esteban Berrio por su ayuda en el procesamiento de fotos.

A Blanca Huertas y Cristóbal Ríos-Málaver compañeros en el listado de Colombia que fue la primera piedra para este trabajo. A Gabriel Rodríguez por sus recomendaciones y por los múltiples datos geográficos de su colección de

Acknowledgments

These guides and checklist are the result of the effort of many collaborators, scientists, fans and photographers to whom we thank, because without them, these publications would not have been possible to complete.

To Doctors Gerardo Lamas and Olaf Mielke who have dedicated their lives to research and education on the butterflies of the neotropics.

In the HesperIIDae family we especially thank the expert Bernard Hermier for the countless hours and pages of explanations and corrections without which it would have been impossible to make this document.

To Dr. Keith Willmott for his advice in the preparation of these documents and identification of photos. To Jean-Claude Petit for the multiple additions of species and corrections for Ecuador. To Dr Gerardo Lamas and Mike McInnis for the information on the Manu National Park.

We thank the following experts who have generously helped with information and in the identification of some photos that have served as support for the list (in alphabetical order): Stéphane Attal, Dr. Andrew Brower, Prof. James Mallet, Andrew Neild, Gregory Nielsen, Dr. Tomasz Pyrcz, Dr. Robert Robbins, Julián Salazar and Aaron Soh.

To Andrés Arenas for his advice and help in preparing the database. To Andrew Neild for his photos, recommendations and suggestions. To David Geale for his countless photographic contributions. To Juan Esteban Berrio for his help in processing the photos.

To Blanca Huertas and Cristóbal Ríos-Málaver, colleagues on the Colombian list, which was the first stone for this work. To Gabriel Rodríguez for his recommendations and for the multiple geographical data of his collection of butterflies. To Dr. Juan José Arango for the motivation and his

mariposas. Al Dr. Juan José Arango por motivación y sus recomendaciones, a Rodrigo Bernal y Daniel Jaramillo F. por sus consejos y colaboración. A Maristela Zamoner por la traducción al portugués.

Al Museo de Historia Natural de Londres (Natural History Museum) y al McGuire Center de la Universidad de la Florida por permitirnos el acceso a sus colecciones, ejemplares y datos. A Blanca Huertas por todos sus consejos y recomendaciones.

A los creadores de las aplicaciones gratis Gimp y PDF24 Tools con las que ha sido posible ensamblar estos documentos.

Especial agradecimiento a las familias de los autores, por su apoyo durante la realización de este proyecto.

recommendations, to Rodrigo Bernal and Daniel Jaramillo F. for their advice and collaboration. To Maristela Zamoner for the portuguese translation.

To the Natural History Museum of London and the McGuire Center from the University of Florida for allowing us access to their collections, specimens and data. To Blanca Huertas for all her advice and recommendations.

To the creators of the free applications Gimp and PDF24 Tools with which it has been possible to assemble these documents.

Special thanks to the families of the authors, for their support during the realization of this project.

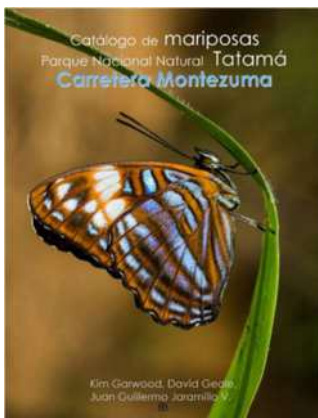
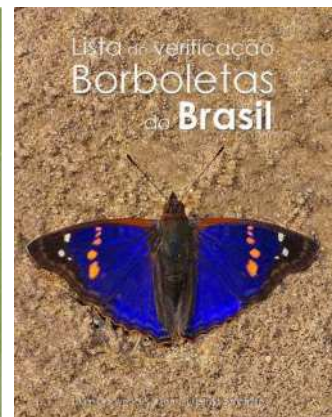
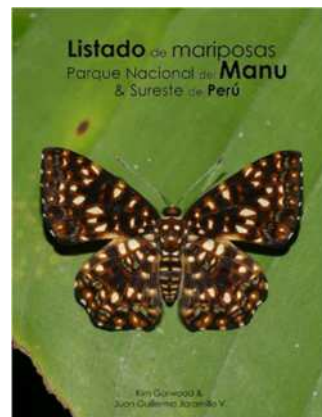
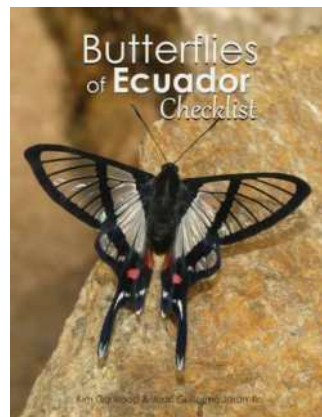
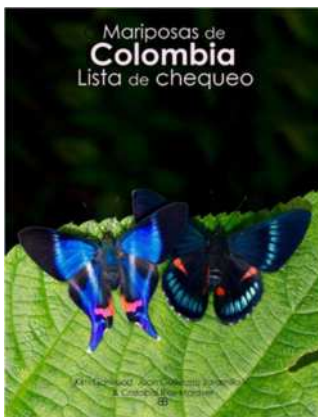
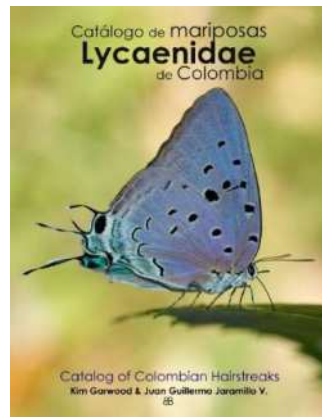


Guías y listados de chequeo

En <https://www.butterflycatalogs.com/> se pueden descargar gratis los listados o guías de mariposas del Neotrópico, Brasil, Colombia, Ecuador, Perú y Bolivia. O solicitar a los autores un listado o guía específico para países desde México hasta Argentina.

Guides & Checklists

At <https://www.butterflycatalogs.com/> you can download free butterfly checklists or guides for the Neotropics, Brazil, Colombia, Ecuador, Peru and Bolivia. Or ask the authors for a specific list or guide for countries from Mexico to Argentina.



Descargue gratis en nuestra página web <https://www.butterflycatalogs.com/>

Free downloading in our web page:

Este listado es un legado porque varios de los sitios donde fueron registradas las especies ya están destruidos y por lo tanto estas especies ya no existen en esa localidad específica. El listado ilustra la asombrosa diversidad de mariposas de Perú para motivar su conocimiento y conservación

This checklist is a legacy because several sites where photos were taken have already been destroyed and therefore the recorded species no longer exist in that specific location. This checklist illustrates the amazing diversity of butterflies in Peru to motivate their knowledge and conservation.

“Solo podemos conservar y proteger lo que conocemos”

“We can only conserve and protect what we know” JGJ



Photo Guide of
Butterflies
Estación **Wayqecha**
Biológica
Upper Manu road



Kim Garwood & Juan Guillermo Jaramillo